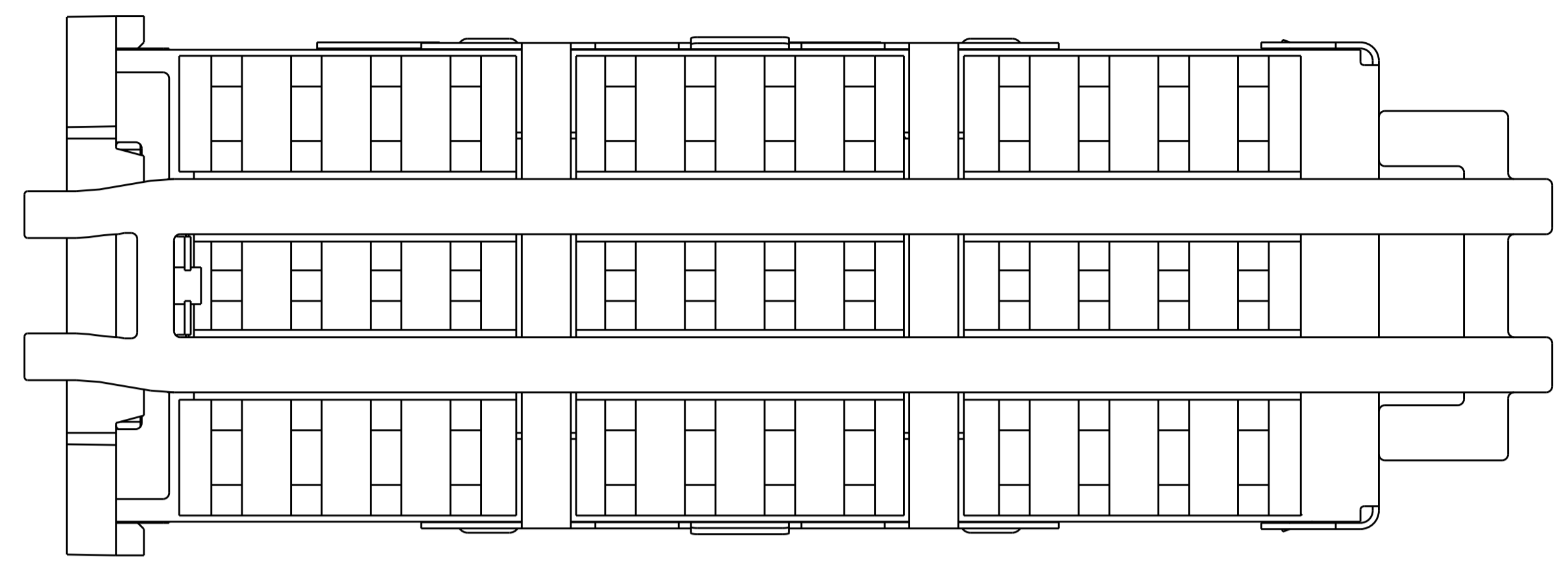
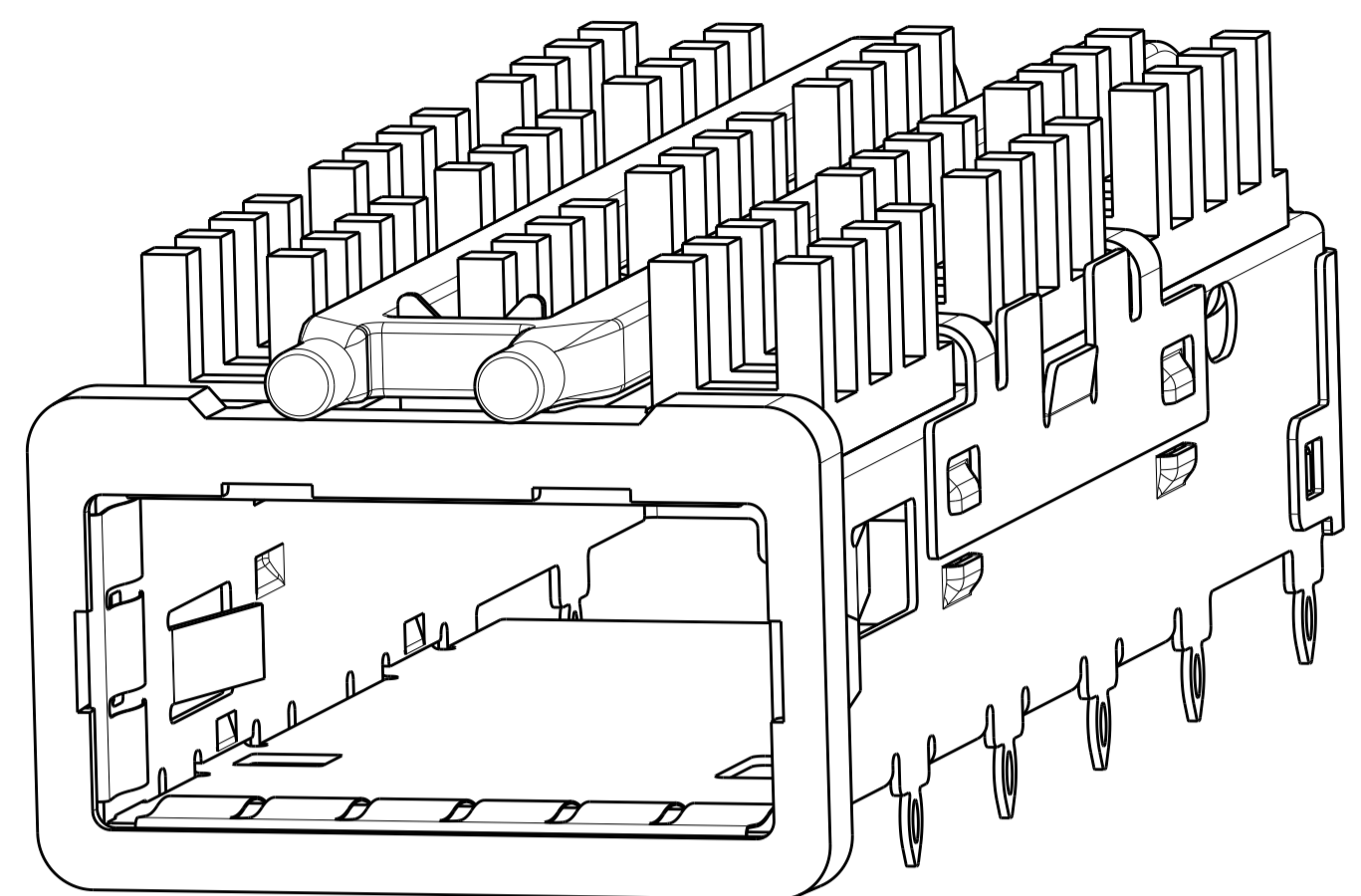
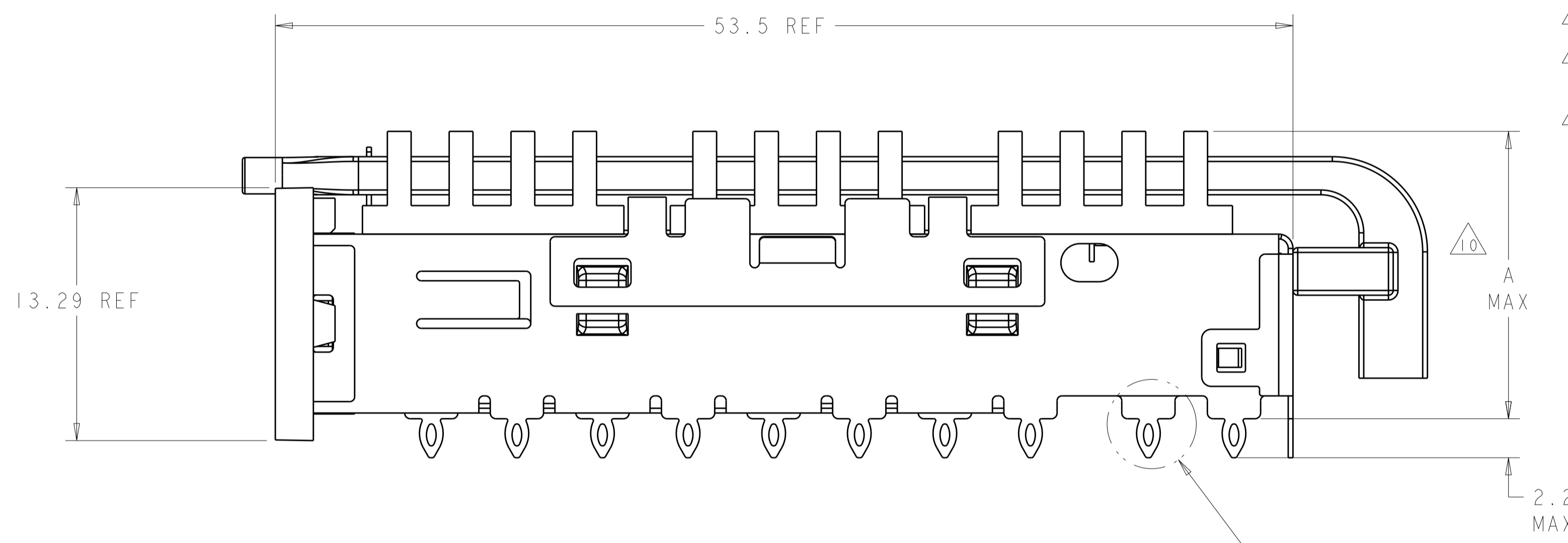
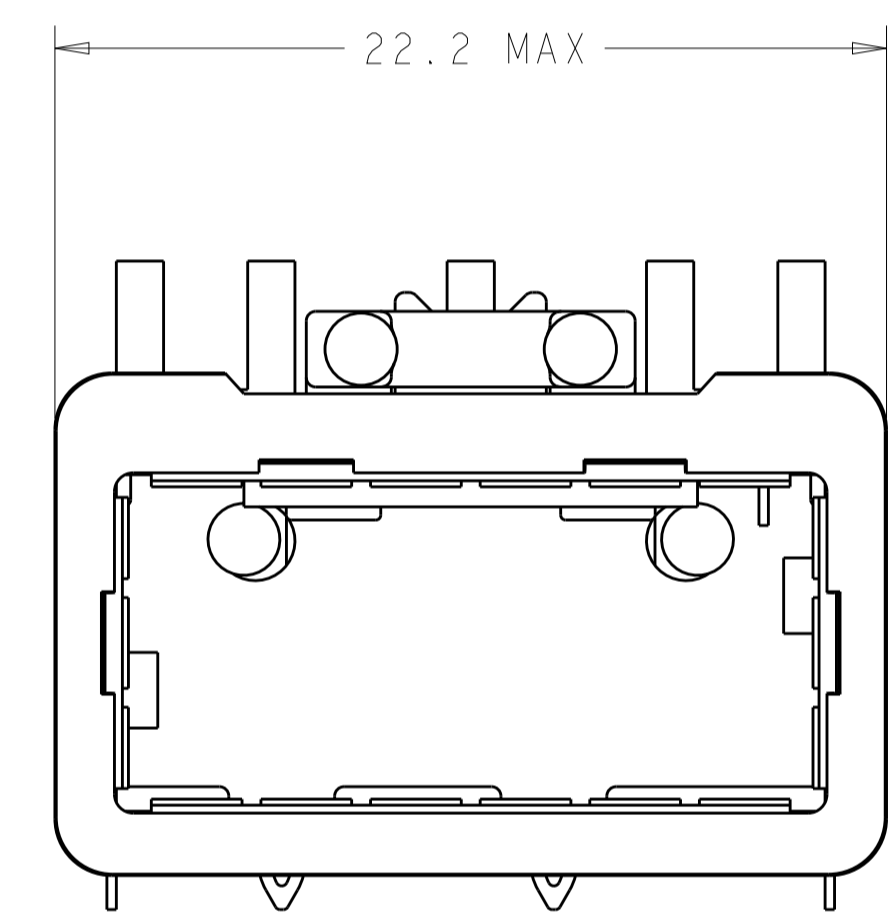


LOC	DIST	REVISIONS			
GP	00	REV	DATE	BY	CHK
		2	PRELIMINARY	20JUN2011	AL CW
		3	REVISED PER ECO-14-018993	3MAR2015	RG MC

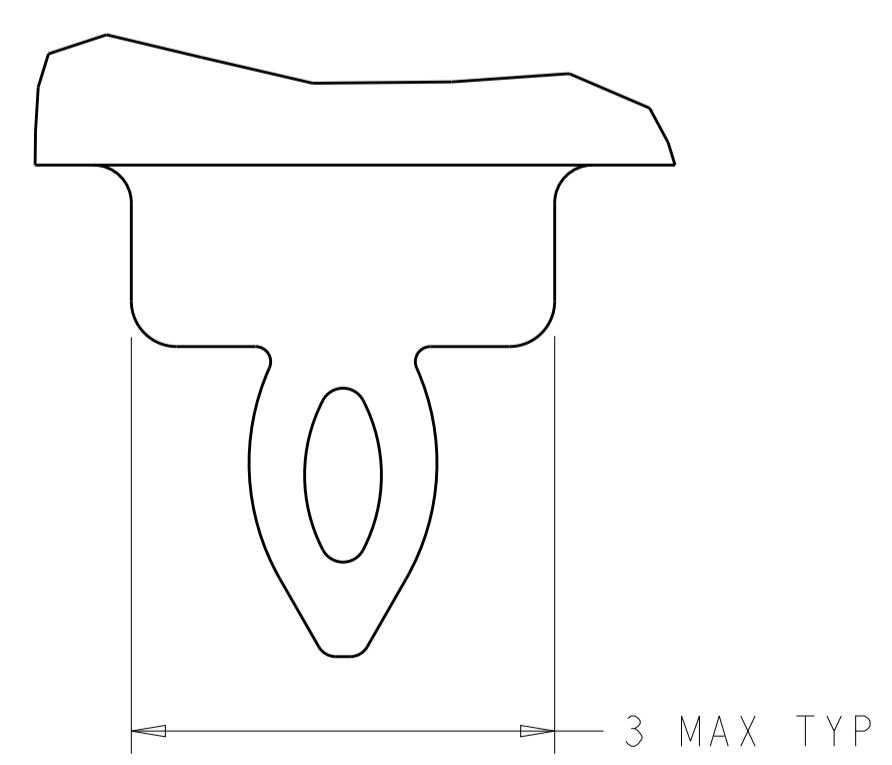


- △ CAGE MATERIAL: NICKEL SILVER, 0.25 THICK
 HEAT SINK MATERIAL: ALUMINUM
 HEAT SINK CLIP MATERIAL: STAINLESS STEEL
 EMI SPRING MATERIAL: COPPER ALLOY
 FRONT FLANGE MATERIAL: ZINC ALLOY
- △ MINIMUM PITCH DIMENSION.
- 3. MATES WITH QSFP MSA COMPATIBLE TRANSCEIVER.
- △ REFERENCE APPLICATION SPEC 114-13218 FOR RECOMMENDED DRILL HOLE DIAMETER AND PLATING THICKNESS.
- △ DATUMS AND BASIC DIMENSIONS ESTABLISHED BY CUSTOMER.
- △ DIMENSION C IS THE NOMINAL THICKNESS OF CUSTOMER SUPPLIED PC BOARD.
 SINGLE SIDED PC BOARD MINIMUM THICKNESS: 1.45
 DOUBLE SIDED PC BOARD MINIMUM THICKNESS: 2.7.
- △ HEAT SINK AND CLIP AND LIGHT PIPE SHIPPED ASSEMBLED TO CAGE ASSEMBLY CAGE ASSEMBLY MAY BE PRESSED INTO THE PCB AS SHIPPED.
- △ DATUM -A- IS TOP SURFACE OF HOST BOARD.
- △ SURFACE TRACES PERMITTED WITHIN THIS AREA EXCEPT WHERE CAGE STANDOFFS, SHOWN IN DETAIL J, CONTACT PC BOARD.
- △ DIMENSION APPLIES WITH MODULE INSTALLED IN THE CAGE.
- △ DATE CODE (YYWW) MARKED ON TOP OF CAGE AND CONCEALED BY HEAT SINK APPLIES TO CAGE ASSEMBLY ONLY.
- △ EMI SPRING FINISH: 2um MIN TIN.
 FRONT FLANGE FINISH: 3um MIN TIN OVER 1.27um MIN NICKEL OVER 5.08um MIN COPPER.
 HEAT SINK FINISH: 0.076um MIN NICKEL PLATING.
- 13. PRODUCT HAS NOT COMPLETED QUALIFICATION TESTING.

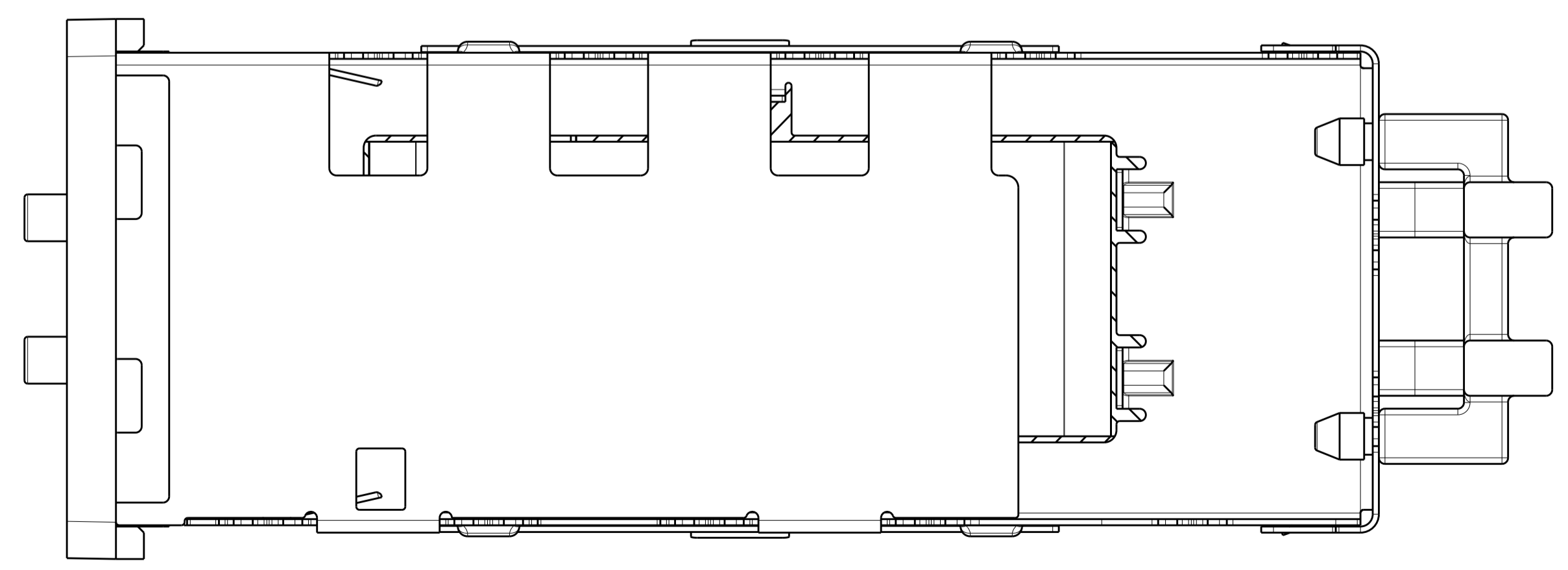


2170112-2 AS SHOWN

SEE DETAIL J



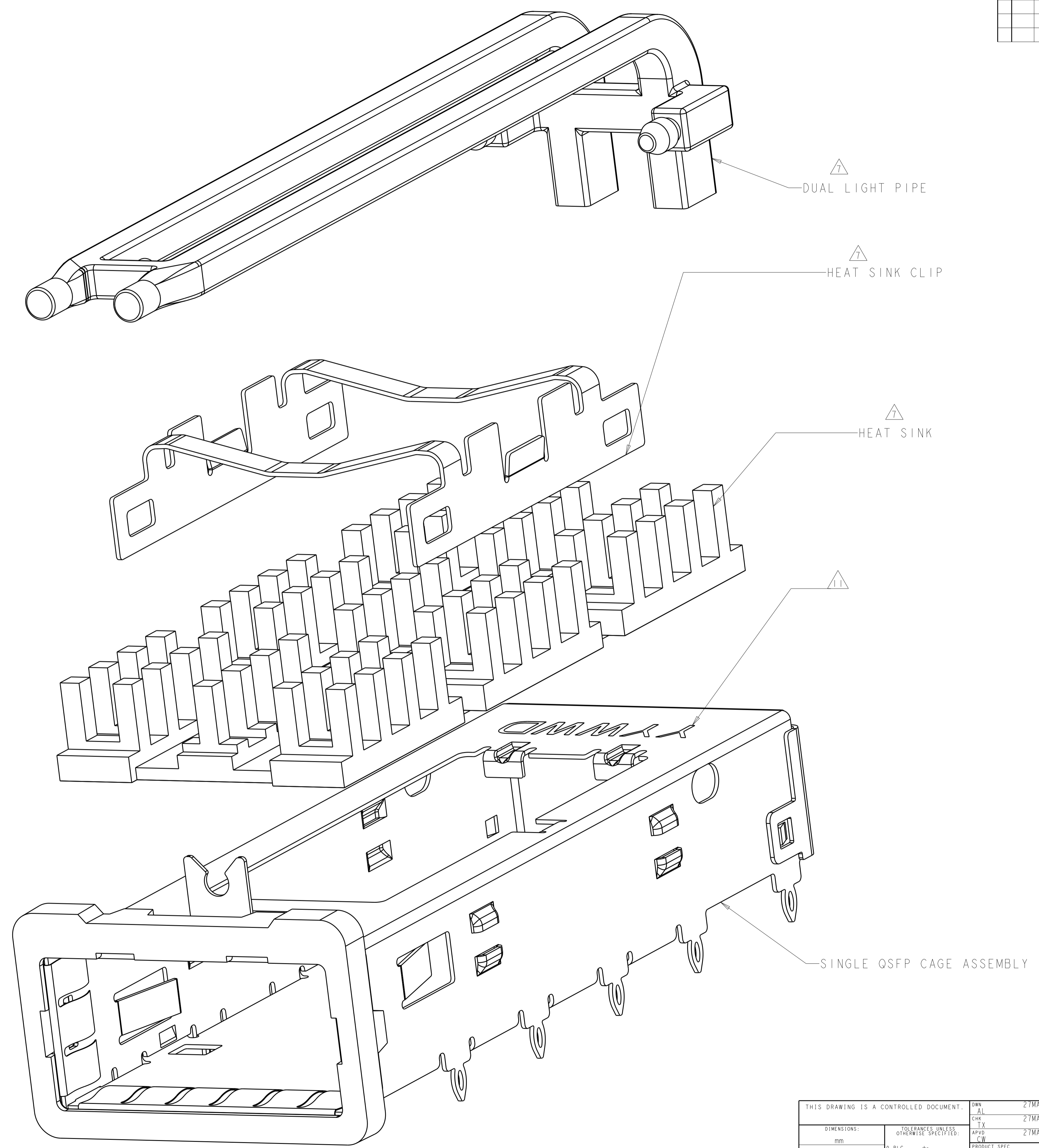
DETAIL J
 SCALE 20:1



23.0	NETWORKING HEAT SINK	2170112-3
16.0	SAN HEAT SINK (SHOWN)	2170112-2
13.7	PCI HEAT SINK	2170112-1
A	DESCRIPTION	PART NUMBER

THIS DRAWING IS A CONTROLLED DOCUMENT.		OWN: AL	27MAY2011	STE TE Connectivity
DIMENSIONS:		CHK: TX	27MAY2011	
TOLERANCES UNLESS OTHERWISE SPECIFIED:		APPV: CW	27MAY2011	
mm		PRODUCT SPEC	108-2286	
0 PLC ±0.5		APPLICATION SPEC	114-13218	NAME: 1X1 CAGE ASSEMBLY, BEHIND BEZEL WITH HEAT SINK AND DUAL LIGHT PIPE QSFP
1 PLC ±0.13		SIZE: CAGE CODE DRAWING NO	A100779C=2170112	RESTRICTED TO
2 PLC ±0.013		WEIGHT	-	
3 PLC ±0.001		Customer Drawing	SCALE 5:1	SHEET 1 OF 5
4 PLC ±0.0001				REV 3
ANGLES ±0.001				
FINISH				

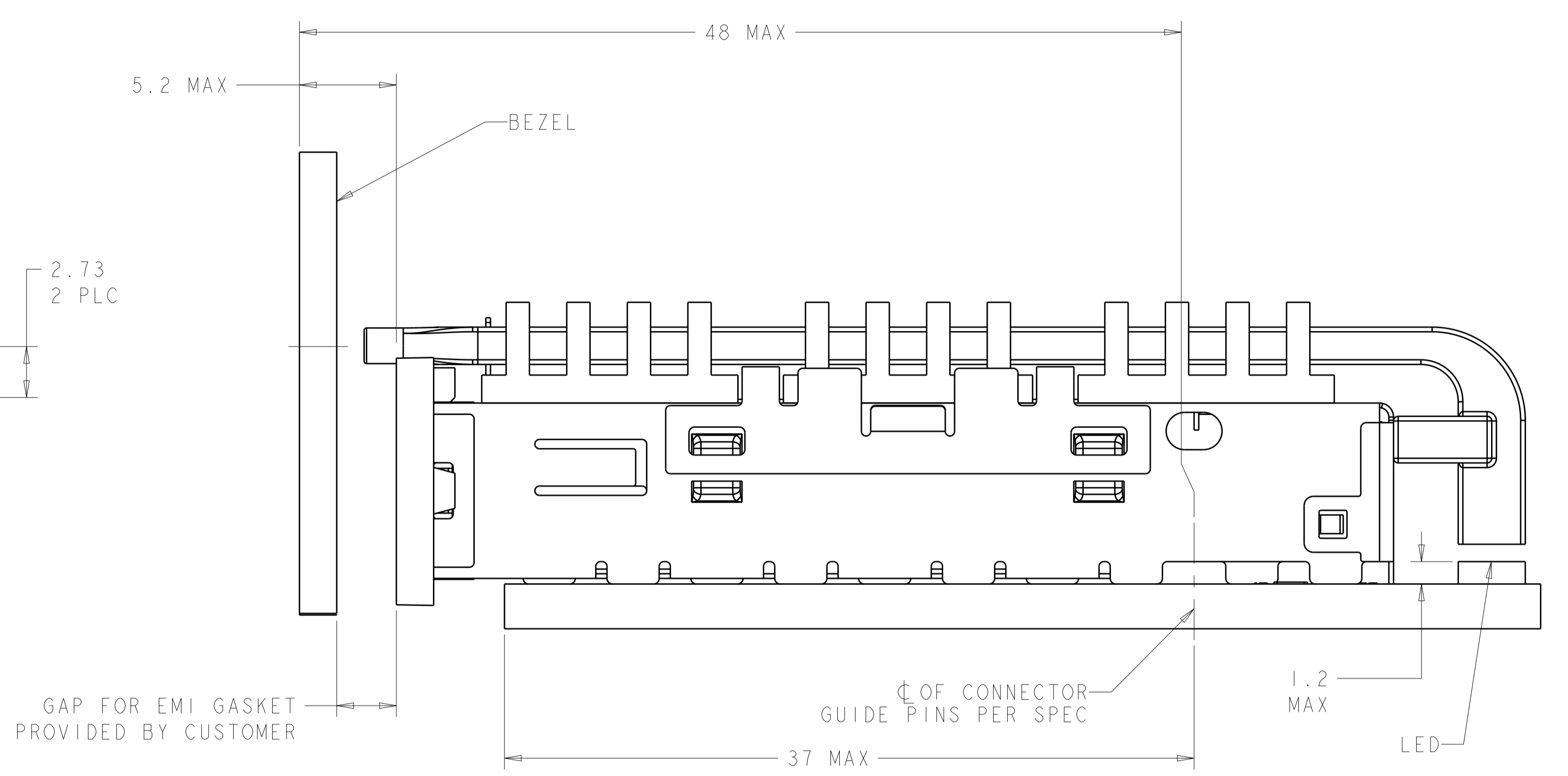
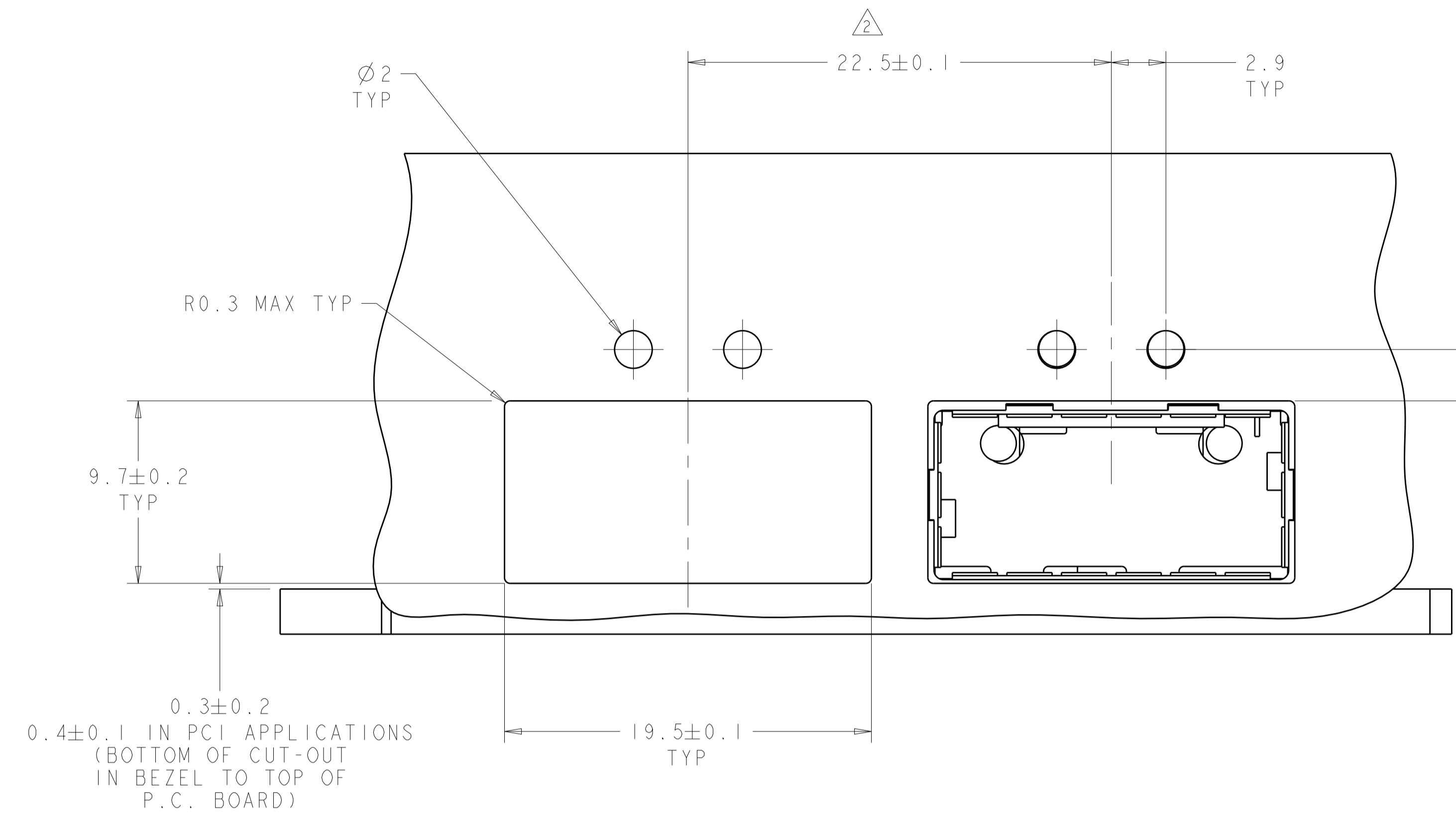
LOC		DIST		REVISONS			
GP	00	P	LYR	DESCRIPTION	DATE	DWN	APVD
		-		SEE SHEET 1			



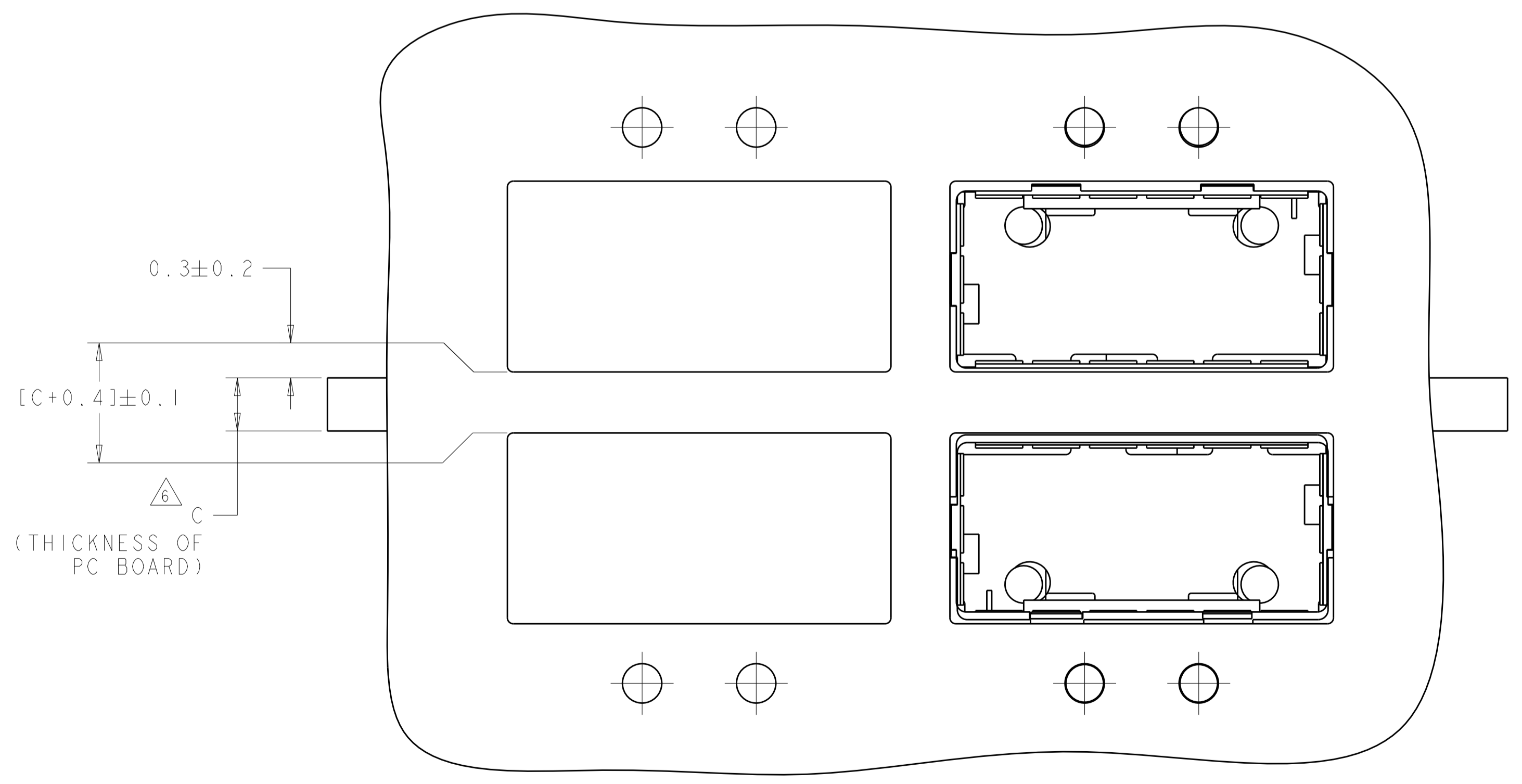
EXPLODED VIEW
SCALE 8:1

THIS DRAWING IS A CONTROLLED DOCUMENT.		DWN: AL	27MAY2011	STE TE Connectivity
		CHK: TX	27MAY2011	
DIMENSIONS:		APVD: CW	27MAY2011	NAME: 1XI CAGE ASSEMBLY, BEHIND BEZEL WITH HEAT SINK AND DUAL LIGHT PIPE QSPF
mm		PRODUCT SPEC		
0 PLC ±0.5 2 PLC ±0.13 3 PLC ±0.013 4 PLC ±0.0001 ANGLES ±0.0001		APPLICATION SPEC		
MATERIAL:		114-13218		
FINISH:		WEIGHT:		SIZE: A100779C=2170112
		Customer Drawing		RESTRICTED TO: -
		SCALE: 5:1		SHEET 2 OF 5
				REV 3

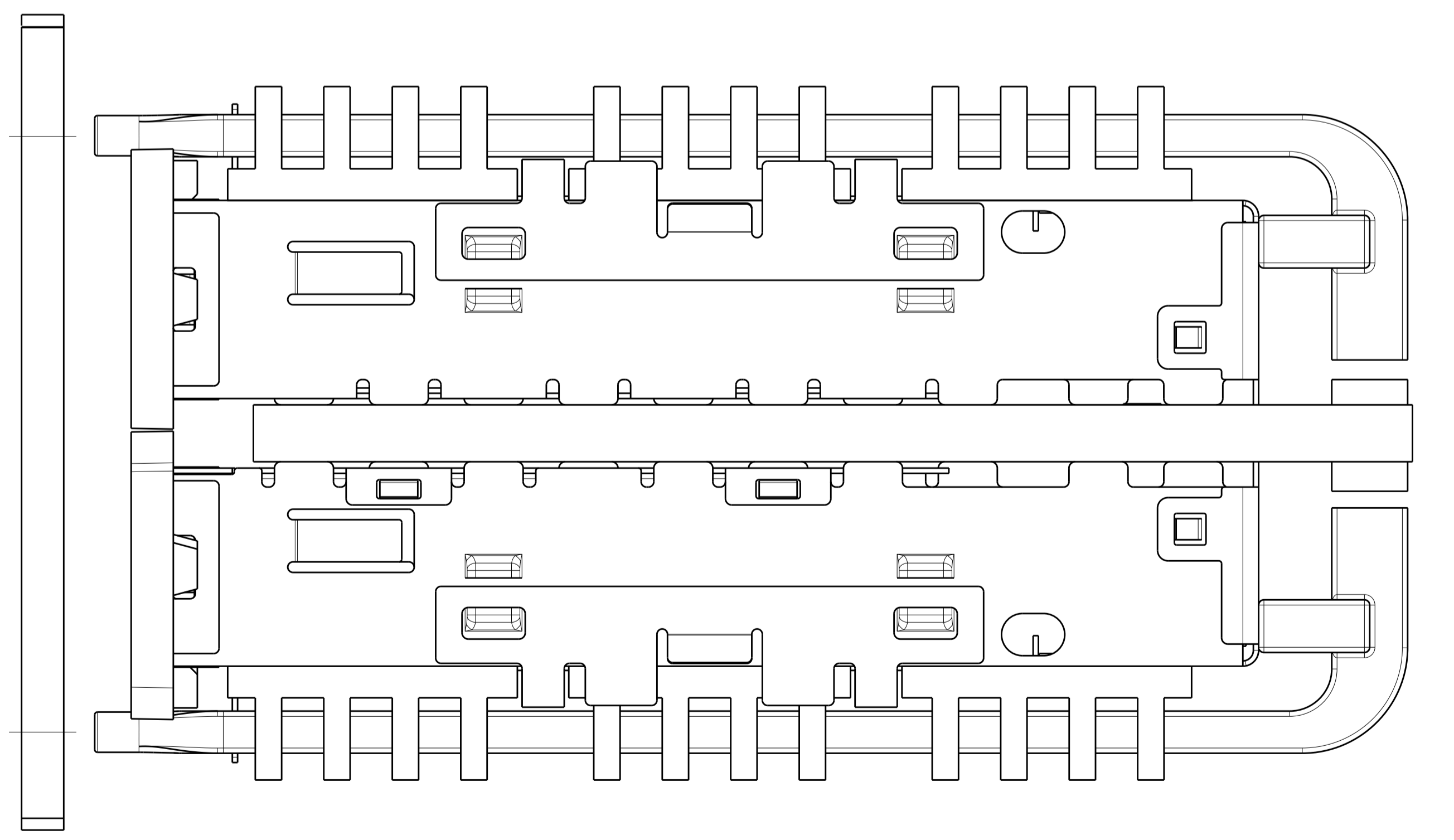
LOC		DIST		REVISIONS			
GP	00	P	LTN	DESCRIPTION	DATE	DMN	APVD
-	-	-	-	SEE SHEET 1	-	-	-



ONE SIDED CONFIGURATION



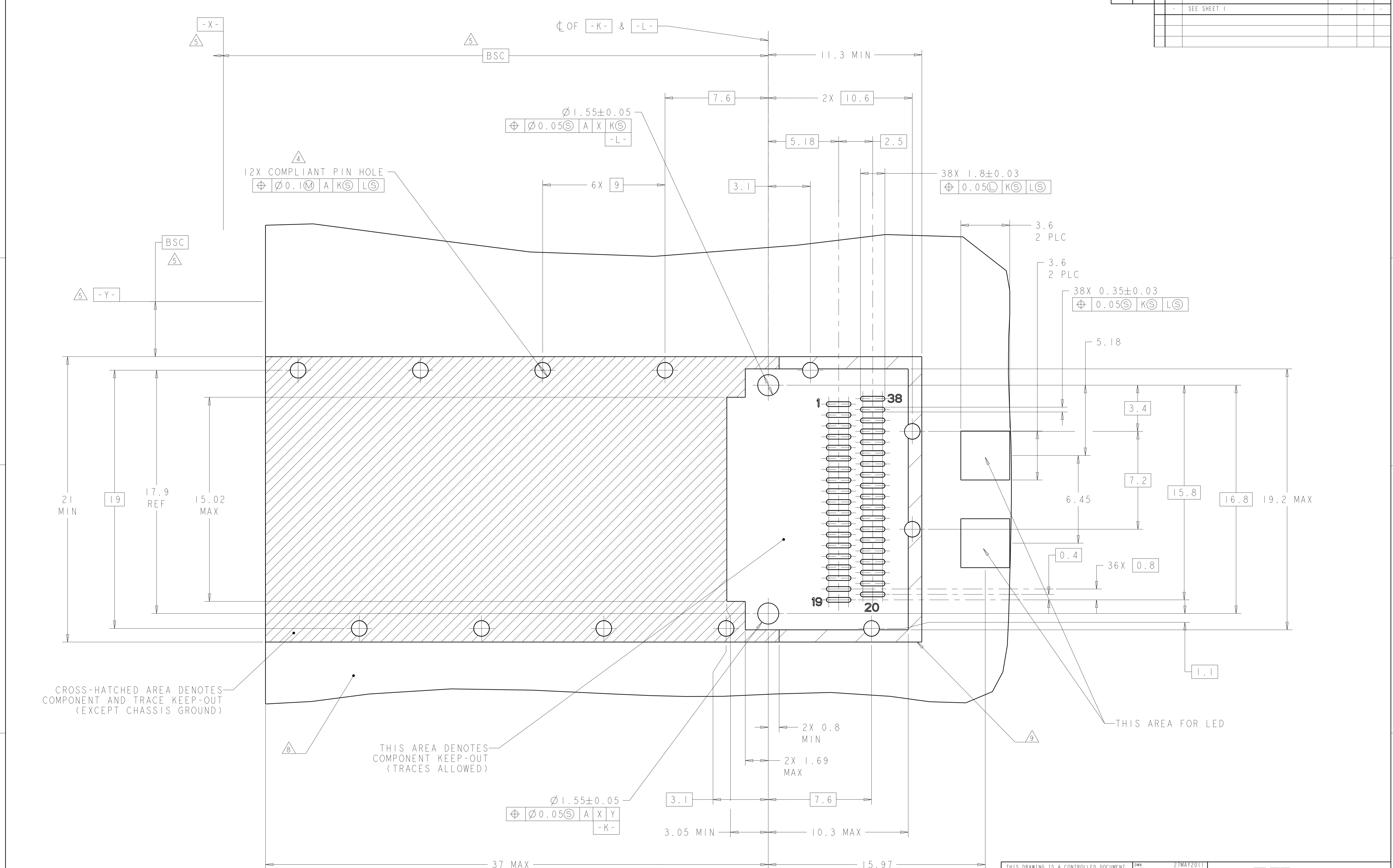
BELLY TO BELLY CONFIGURATION
 SIMILAR TO ONE SIDED EXCEPT
 WHERE NOTED



THIS DRAWING IS A CONTROLLED DOCUMENT.		DMN: 27MAY2011	STE TE Connectivity
DIMENSIONS: mm		CHK: 27MAY2011	
TOLERANCES UNLESS OTHERWISE SPECIFIED:		APP: TX	NAME: 1XI CAGE ASSEMBLY, BEHIND BEZEL WITH HEAT SINK AND DUAL LIGHT PIPE QSFP
0 PLC ± 0.5		PRD: 27MAY2011	
1 PLC ± 0.13		APP: CW	PRODUCT SPEC: 108-2286
2 PLC ± 0.13		APP: CW	APPLICATION SPEC: 114-13218
3 PLC ± 0.013		APP: CW	SIZE: CAGE CODE DRAWING NO: A100779C=2170112
4 PLC ± 0.0001		APP: CW	RESTRICTED TO: -
ANGLES ± 0.0001		APP: CW	WEIGHT: -
MATERIAL: -		APP: CW	Customer Drawing
FINISH: -		APP: CW	SCALE: 5:1 SHEET 3 OF 5 REV 3

LOC	DIST	REV	DATE	BY	APPD
GP	00				

REVISIONS			
REV	DATE	BY	APPD
-	-	-	-
-	-	-	-



CROSS-HATCHED AREA DENOTES COMPONENT AND TRACE KEEP-OUT (EXCEPT CHASSIS GROUND)

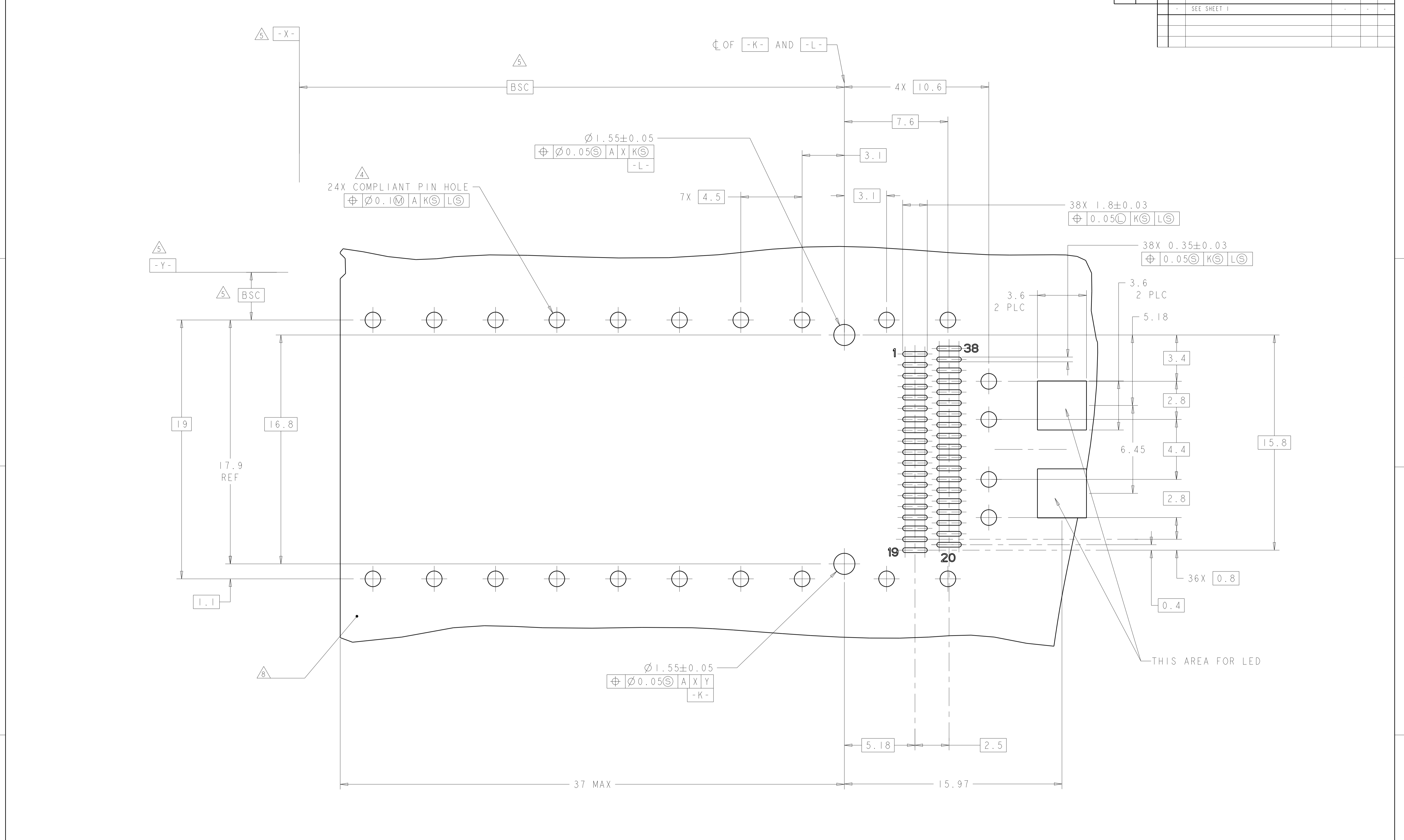
THIS AREA DENOTES COMPONENT KEEP-OUT (TRACES ALLOWED)

THIS AREA FOR LED

RECOMMENDED PCB LAYOUT
 SINGLE SIDED CONFIGURATION
 SCALE 8:1

THIS DRAWING IS A CONTROLLED DOCUMENT.		OWN: 27MAY2011	TE Connectivity
		CHK: 27MAY2011	
		APPD: 27MAY2011	NAME: 1XI CAGE ASSEMBLY, BEHIND BEZEL WITH HEAT SINK AND DUAL LIGHT PIPE QSFP
DIMENSIONS: mm		TOLERANCES UNLESS OTHERWISE SPECIFIED:	PRODUCT SPEC: 108-2286
		0 PLC ±0.5	APPLICATION SPEC: 114-13218
		1 PLC ±0.13	WEIGHT: -
		2 PLC ±0.13	RESTRICTED TO: -
		3 PLC ±0.013	SIZE: A100779C=2170112
		4 PLC ±0.0001	SCALE: 4:1 SHEET 4 OF 5 REV 3
		ANGLES ±0.0001	Customer Drawing

LOC		DIST		REVISONS			
GP	00	P	LTN	DESCRIPTION	DATE	DWN	APVD
		-		SEE SHEET 1			



RECOMMENDED PCB LAYOUT
 BELLY TO BELLY CONFIGURATION
 SEE SHEET 4 FOR KEEP OUT AREAS
 SCALE 8:1

THIS DRAWING IS A CONTROLLED DOCUMENT.		DWN: 27MAY2011	TE Connectivity
		CHK: 27MAY2011	
DIMENSIONS: mm		APVD: 27MAY2011	NAME: 1X1 CAGE ASSEMBLY, BEHIND BEZEL WITH HEAT SINK AND DUAL LIGHT PIPE QSFP
TOLERANCES UNLESS OTHERWISE SPECIFIED: 0 PLC ±0.5 1 PLC ±0.13 2 PLC ±0.13 3 PLC ±0.013 4 PLC ±0.0001 ANGLES ±0.0001		PRODUCT SPEC: 108-2286	SIZE: CAGE CODE DRAWING NO: A100779C=2170112
MATERIAL: -		APPLICATION SPEC: 114-13218	RESTRICTED TO: -
FINISH: -		WEIGHT: -	SCALE: 4:1 SHEET 5 OF 5 REV 3
		Customer Drawing	

单击下面可查看定价，库存，交付和生命周期等信息

[>>TE Connectivity\(泰科\)](#)