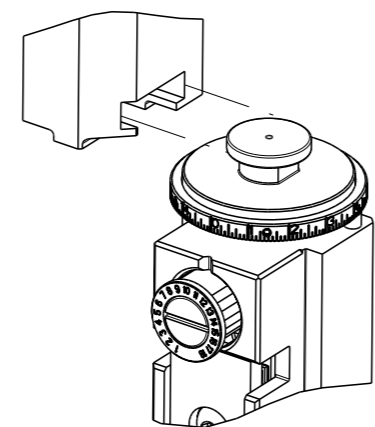


| THIS DRAWING IS UNPUBLISHED.                                       | RELEASED FOR PUBLICATION | 20                              |           |
|--|--------------------------|---------------------------------|-----------|
| COPYRIGHT 20 BY TYCO ELECTRONICS CORPORATION. ALL RIGHTS RESERVED. |                          |                                 |           |
| PART NUMBER  | REVISION                 | DESCRIPTION                     | FEED TYPE |
| 2837270-2  | D                        | FINE CRIMP HEIGHT ADJUST        | PNEUMATIC |
| 7-2837270-2  | D                        | PNEUMATIC AND CRIMP TOOLING KIT | PNEUMATIC |
| 7-2837270-7  | A                        | CRIMP TOOLING KIT               | -         |

ATLANTIC VERSION TERMINATOR INTERFACE ADAPTER



| APPLICATOR DATA                      |                |      |
|--------------------------------------|----------------|------|
| CRIMP                                | SIZE           | TYPE |
| WIRE                                 | 0.70 mm [.028] | F    |
| INSUL                                | 0.75 mm [.030] | F    |
| APPLICATOR INSTRUCTIONS<br>408-35042 |                |      |

|   |                     |                                    |                |
|---|---------------------|------------------------------------|----------------|
| TERMINAL DATA: MOLEX TERMINAL                 |                     | MOLEX CRIMP SPECIFICATION          |                |
| TERMINAL NAME: 1.0mm PITCH WIRE TO BOARD CONN |                     |                                    |                |
| WIRE STRIP LENGTH                             |                     | TERMINAL INSULATION DIAMETER RANGE |                |
| 1.00-1.30 mm [.039-.051 IN]                   |                     | Ø0.40-0.80 mm [.016-.031 IN]       |                |
| TERMINAL APPLICATION SPECIFICATION            | ATS-639019400 Rev C |                                    |                |
| TERMINALS APPLIED                             |                     |                                    |                |
| TE TERMINAL                                   | MOLEX TERMINAL      | TE TERMINAL                        | MOLEX TERMINAL |
| 3311207-1                                     | 501334-0000         | 3311207-3                          | 501193-3000    |
| 3311207-2                                     | 501193-2000         | 3311207-4                          | 501193-0099    |
| 3311207-5                                     | 501193-5000         | 3311207-6                          | 501193-6000    |
| 3311207-7                                     | 501193-8000         | 3311207-8                          | 501193-9000    |
| 3311207-9                                     | 501193-7000         |                                    |                |

| WIRE SIZE | CRIMP HEIGHT mm [INCH]        | CRIMP HEIGHT REFERENCE SETTING |
|-----------|-------------------------------|--------------------------------|
| 28 AWG    | 0.46 +/- 0.02 [.018 +/- .001] | 7.1                            |
| 30 AWG    | 0.43 +/- 0.02 [.017 +/- .001] | 7.4                            |
| 32 AWG    | 0.41 +/- 0.02 [.016 +/- .001] | 7.6                            |

- RECOMMENDED SPARE PARTS
- REFER TO SUPPLIED INSTRUCTION SHEET FOR CLEANING, LUBRICATION AND STORAGE OF APPLICATOR.
- APPLY PART NUMBER 1-23419-5 LOCTITE TO THREADS OF ITEM 180. APPLY PART NUMBER 2-23419-6 LOCTITE TO THREADS OF ITEM 242.
- CRIMP HEIGHT REFERENCE SETTING WAS THE SETTING USED WHEN THE APPLICATOR WAS QUALIFIED AT THE FACTORY. ADJUSTMENT MAY BE NECESSARY WHEN RUNNING APPLICATOR IN THE FIELD.
- 5. UNLESS SPECIFIED OTHERWISE TORQUE VALUES SHALL BE USED PER DOCUMENT, 101-35000.
- TERMINAL PITCH NOT COMPATIBLE WITH MECHANICAL FEED.
- TERMINAL LUBRICANT IS RECOMMENDED.
- PART OPTIONAL FOR BETTER LEADMAKER PERFORMANCE.

**\*WARNING**  
ON INSTALLATION, SET WIRE DISC TO CRIMP HEIGHT REFERENCE SETTING FOR LARGEST WIRE SIZE. CRIMP HEIGHT REFERENCE SETTINGS GREATER THAN THE VALUE SHOWN MAY CAUSE DAMAGE TO THE CRIMP TOOLING, REFER TO THE INSTRUCTION SHEET FOR PROPER SETUP AND ADJUSTMENTS.

| LOC | DIST | REVISIONS |               |           |       |
|-----|------|-----------|---------------|-----------|-------|
| A   | 66   | REV       | DATE          | BY        | APPV  |
|     |      | B         | ECR-19-003181 | 27FEB2019 | FJ CT |
|     |      | C         | ECR-19-004200 | 15MAR2019 | FL CT |
|     |      | D         | ECR-19-009781 | 24JUN2019 | FJ TE |
|     |      | D1        | ECR-20-013368 | 21SEP2020 | FJ TE |

|  |   |     |     |             |                                     |     |
|--|---|-----|-----|-------------|-------------------------------------|-----|
|  | - | 1   | 1   | 2079383-1   | SCR, BHSC, RoHS (M3 X 8)            | 284 |
|  | - | 1   | 1   | 1633289-4   | STABILIZER                          | 283 |
|  | - | 1   | 1   | 1803461     | HOLDER, STABILIZER                  | 282 |
|  | - | 1   | 1   | 1-18028-3   | WASHER, FLAT, REG M5                | 281 |
|  | - | 1   | 1   | 1803196-1   | STUD, ADJUSTMENT SCREW              | 280 |
|  | - | 1   | 1   | 2330046-1   | RESIN COLLAR, FLANGED               | 261 |
|  | - | 1   | 1   | 2119641-1   | FEED CAM, AIR FEED                  | 248 |
|  | - | 1   | 1   | 2119082-5   | CAM, SNAIL, INSULATION ADJUSTMENT   | 244 |
|  | - | 1   | 1   | 2079764-1   | WASHER, WAVE SPRING, CREST-TO-CREST | 243 |
|  | - | 1   | 1   | 2119083-1   | RETAINER, INSULATION DIAL           | 242 |
|  | - | 1   | 1   | 2844940-1   | AIR FEED MODULE                     | 238 |
|  | - | 2   | 2   | 1-2079383-0 | SCR, BHSC, RoHS (M3 X 6)            | 230 |
|  | - | 1   | 1   | 1-1752354-4 | STANDOFF, HOLD-DOWN                 | 180 |
|  | - | 1   | 1   | 2-1633764-2 | HOLD DOWN, TERMINAL                 | 179 |
|  | - | 1   | 1   | 993111-1    | PIN, SLOTTED SPRING 3.0 X 20.0      | 177 |
|  | - | 1   | 1   | 8-22280-7   | SPRING, COMPRESSION                 | 176 |
|  | - | 1   | 1   | 1752353-2   | GUIDE PIN, HOLDDOWN                 | 175 |
|  | - | 1   | 1   | 1901680-2   | GUIDE PIN, HOLDDOWN                 | 174 |
|  | - | REF | REF | 994970-2    | COUNTER, MAGNETIC                   | 164 |
|  | - | 1   | 1   | 1-22281-6   | SPRING, COMPRESSION                 | 121 |
|  | - | 1   | 1   | 2119955-1   | ASSY, LUBRICATOR, SIDE FEED         | 113 |
|  | - | 1   | 1   | 2844908-1   | SCREW, LOCKING                      | 99  |
|  | - | 1   | 1   | 2844907-1   | POST, LOCKING                       | 98  |
|  | - | 1   | 1   | 1-690438-0  | FRONT STRIP GUIDE                   | 96  |
|  | - | 2   | 2   | 2168083-1   | SCR, SKT HD CAP, RoHS, M3 X 8.0     | 95  |
|  | - | 1   | 1   | 1-994962-8  | SCR, SKT HD CAP M3 X 45.0           | 93  |
|  | - | 1   | 1   | 1803607-3   | DOCUMENTATION PACKAGE               | 71  |
|  | - | 1   | 1   | 2-2119791-2 | DEPRESSOR, WIRE                     | 70  |
|  | - | 1   | 1   | 2119740-1   | TAG, IDENTIFICATION                 | 67  |
|  | - | 2   | 2   | 2168078-1   | SCREW, DRIVE, RH, RoHS, 2 x .188    | 66  |
|  | - | 2   | 2   | 2-18032-5   | SCR, SET, FLT PNT, M5 X 20.0        | 61  |
|  | - | 1   | 1   | 2161425-1   | SCREW, SHOULDER                     | 60  |
|  | - | 1   | 1   | 5-18022-5   | SCR, HEX HD CAP, M4 X 6.0           | 59  |
|  | - | 1   | 1   | 1338685-1   | PAWL, FEED                          | 56  |
|  | - | 4   | 4   | 2168083-3   | SCR, SKT HD CAP, RoHS, M4 X 12.0    | 54  |
|  | - | 1   | 1   | 1-5018030-0 | NUT, HEX, REG, RoHS, M3.5           | 52  |
|  | - | 1   | 1   | 1901681-8   | HOLDDOWN, TERMINAL                  | 51  |
|  | - | 1   | 1   | 18023-9     | SCR, SKT HD CAP M4 X 6.0            | 49  |
|  | - | 1   | 1   | 2-1803583-5 | APPLICATOR BASIC ASSEMBLY, SF       | 46  |
|  | - | 1   | 1   | 1803515-3   | RAM ASSEMBLY, SF ATLANTIC           | 44  |
|  | - | 1   | 1   | 1803602-1   | SCR, BHSC, RoHS (M8 X 25)           | 41  |
|  | - | 1   | 1   | 4-1752356-7 | SUPPORT, TERMINAL                   | 34  |
|  | - | 2   | 2   | 2079383-5   | SCR, BHSC, RoHS (M4 X 20)           | 33  |
|  | - | 2   | 2   | 2-2844962-3 | SPACER, CYLINDRICAL, STRIP GUIDE    | 30  |
|  | - | 1   | 1   | 2844938-1   | PLATE, STRIP GUIDE                  | 29  |
|  | - | 1   | 1   | 455888-5    | SPACER, CRIMPER                     | 28  |
|  | - | 2   | 2   | 22281-8     | SPRING, COMPRESSION                 | 27  |
|  | - | 1   | 1   | 356835-1    | LEVER, DRAG RELEASE                 | 26  |
|  | - | 1   | 1   | 240792-1    | DRAG, TERMINAL                      | 25  |
|  | - | 1   | 1   | 1320928-6   | STRIP GUIDE                         | 24  |
|  | - | 1   | 1   | 980371-4    | SCR, SKT HD SHLDR 5.0 DIA X 6.0     | 23  |
|  | - | 1   | 1   | 2168083-2   | SCR, SKT HD CAP, RoHS, M4 X 8.0     | 21  |
|  | - | 2   | 2   | 1-18028-2   | WASHER, FLAT, REG M4                | 20  |
|  | - | 1   | 1   | 1803213-1   | STRIPPER                            | 19  |
|  | - | 1   | 1   | 3-22280-3   | SPRING, COMPRESSION                 | 12  |
|  | - | 1   | 1   | 1-356885-4  | STOP, SHEAR                         | 11  |
|  | - | 1   | 1   | 2119805-1   | SHEAR HOLDER, FRONT                 | 10  |
|  | - | 1   | 1   | 1803095-6   | FLOATING SHEAR, FRONT               | 9   |
|  | 1 | 2   | 1   | 1803655-4   | ANVIL, COMBINATION                  | 8   |
|  | - | -   | -   | -           | -                                   | 7   |
|  | - | -   | -   | -           | -                                   | 6   |
|  | - | 1   | 1   | 2-2119757-4 | DEPRESSOR, SHEAR                    | 5   |
|  | - | 1   | 1   | 2-238011-0  | BLOCK, CRIMPER SPACER               | 4   |
|  | 1 | 2   | 1   | 1-1803493-5 | CRIMPER, INSULATION F PREMIUM       | 3   |
|  | - | -   | -   | -           | -                                   | 2   |
|  | 1 | 2   | 1   | 3-1803407-0 | CRIMPER, WIRE PREMIUM               | 1   |

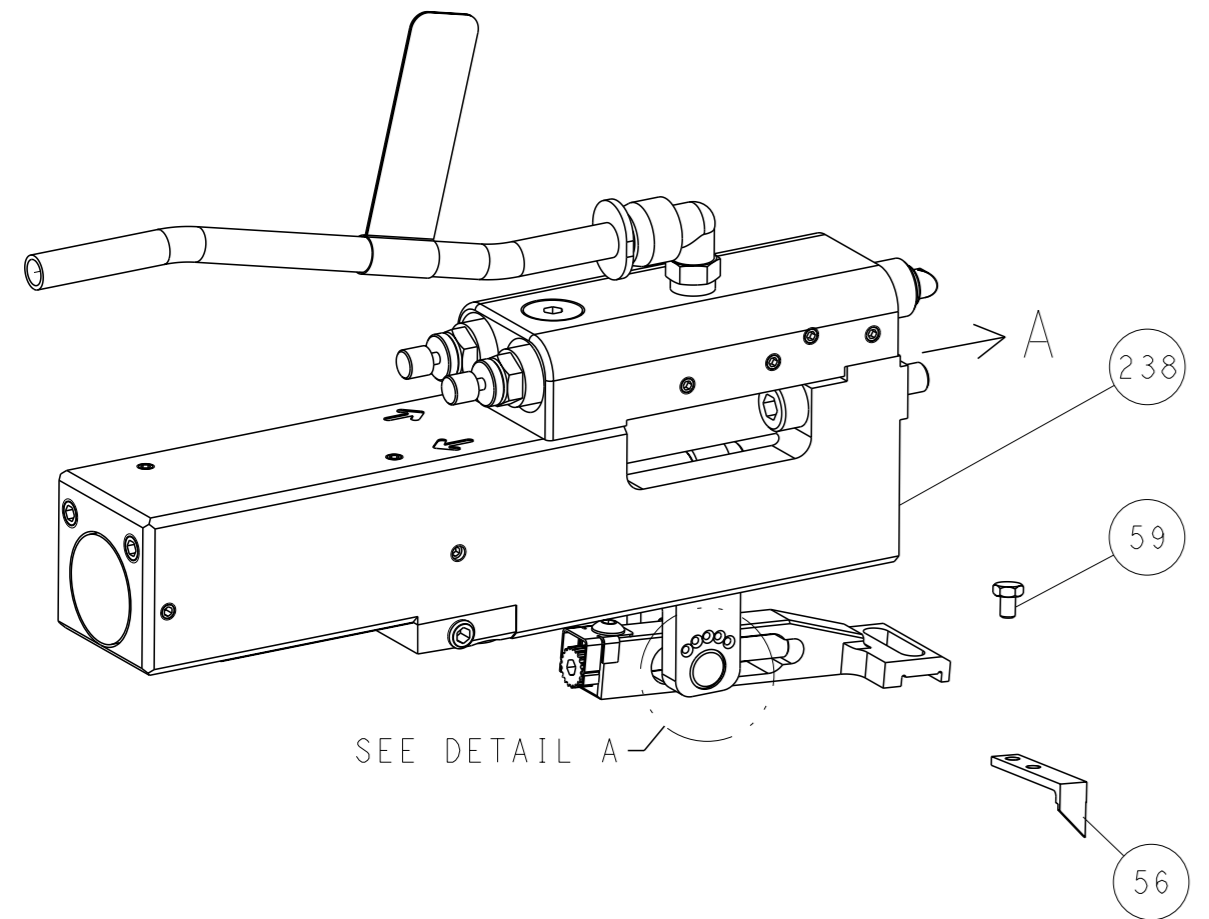
ATLANTIC VERSION  
Shown on sheets 1 of 4 & 2 of 4  
(Pacific version shown on sheets 3 of 4 & 4 of 4)

|                |   |  |   |                   |                            |           |  |              |  |        |  |
|----------------|---|--|---|-------------------|----------------------------|-----------|--|--------------|--|--------|--|
| DIMENSIONS: mm |   | TOLERANCES UNLESS OTHERWISE SPECIFIED: |   | DRAWING NO. 00779 |                            | SCALE 1:2 |  | SHEET 1 OF 4 |  | REV D1 |  |
| 0 PLC          | ± | 1 PLC                                  | ± | NAME              | Ocean Side Feed Applicator |           |  |              |  |        |  |
| 2 PLC          | ± | 3 PLC                                  | ± | DATE              | 17MAY2018                  |           |  |              |  |        |  |
| 4 PLC          | ± | ANGLES                                 | ± | APPROVED          | T. BROOKS                  |           |  |              |  |        |  |
| FINISH         | ± | WEIGHT                                 | - | DESIGNED BY       | R. KNEPPER                 |           |  |              |  |        |  |
| MATERIAL       | - | Customer Accessible Production Drawing | - | DATE              | 17MAY2018                  |           |  |              |  |        |  |

| LOC | DIST | REVISIONS |     |             |      |     |      |
|-----|------|-----------|-----|-------------|------|-----|------|
| A   | 66   | P         | LYR | DESCRIPTION | DATE | OWN | APVD |
|     |      | -         |     | SEE SHEET 1 | -    | -   | -    |

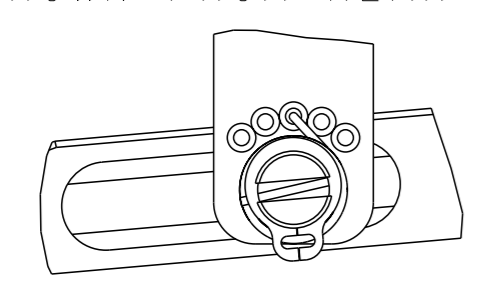
# FEED TYPE

## PNEUMATIC



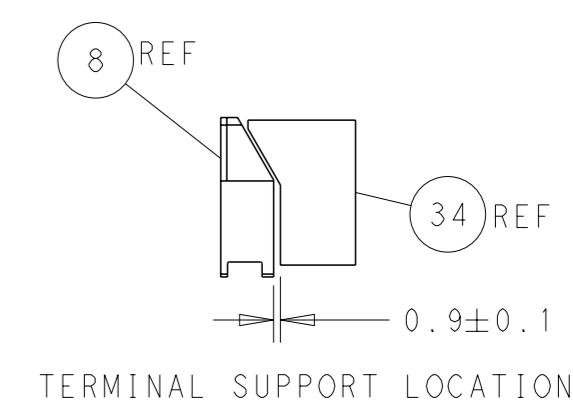
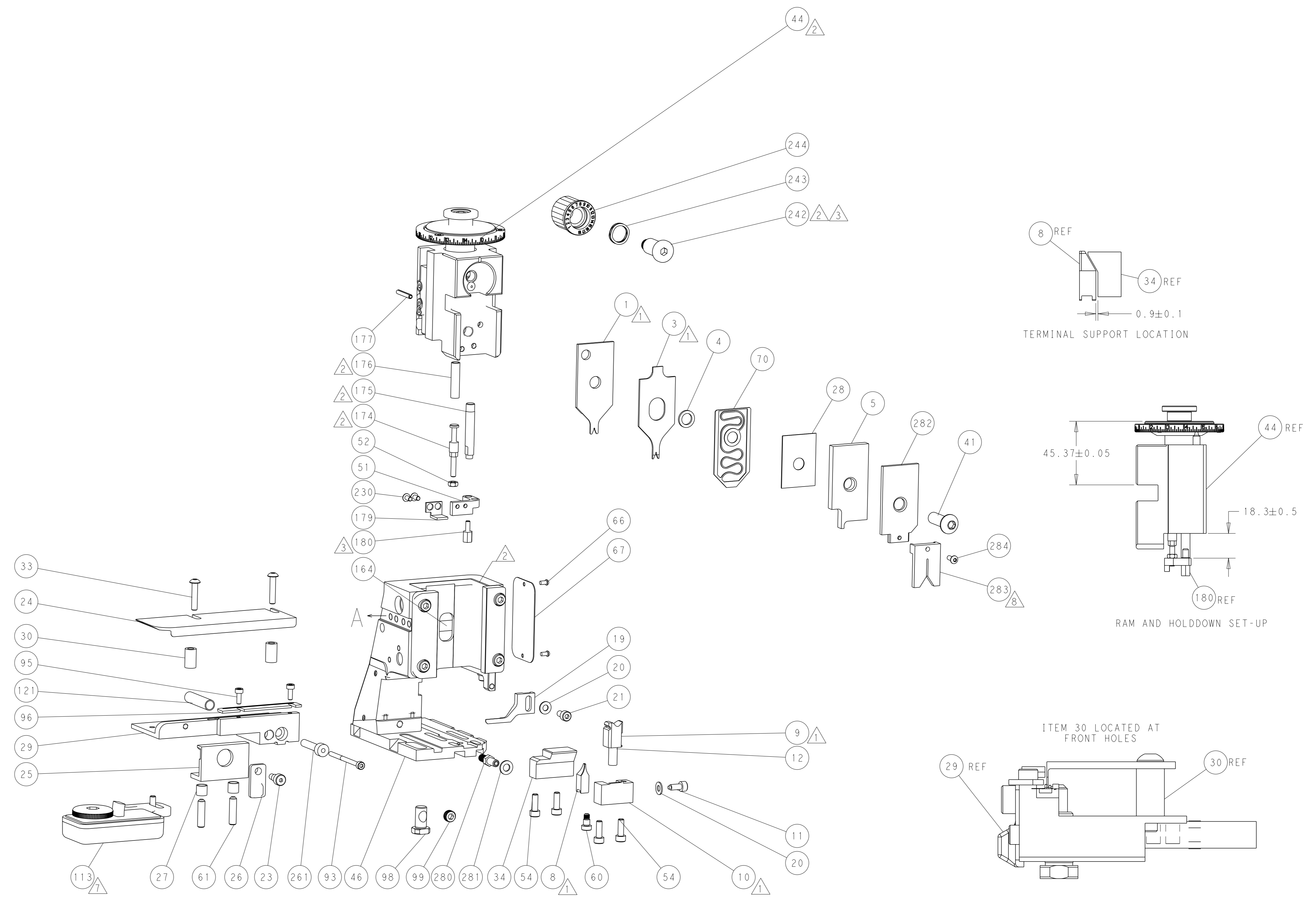
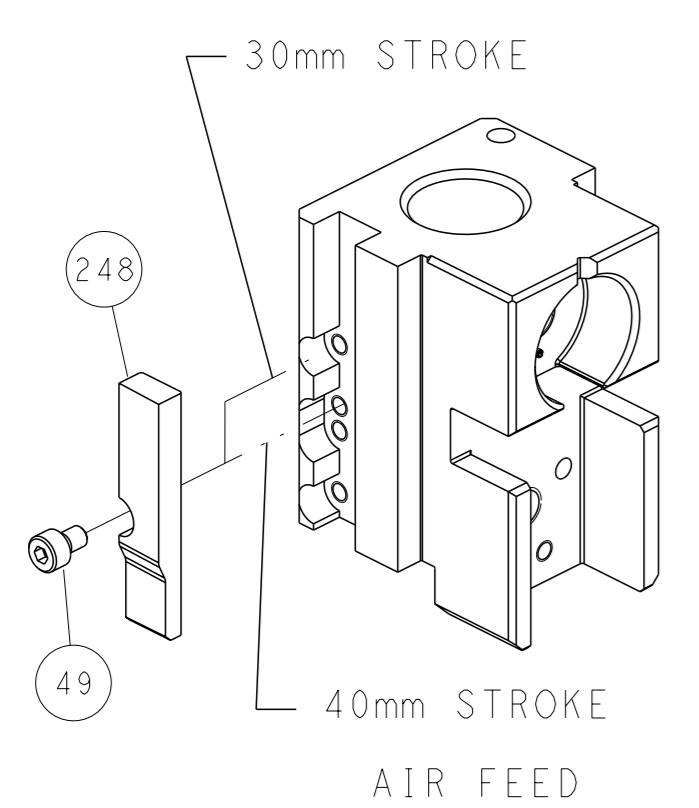
SEE DETAIL A

## FEED SPRING SETTING POSITION (SHOWN FROM REAR SIDE)

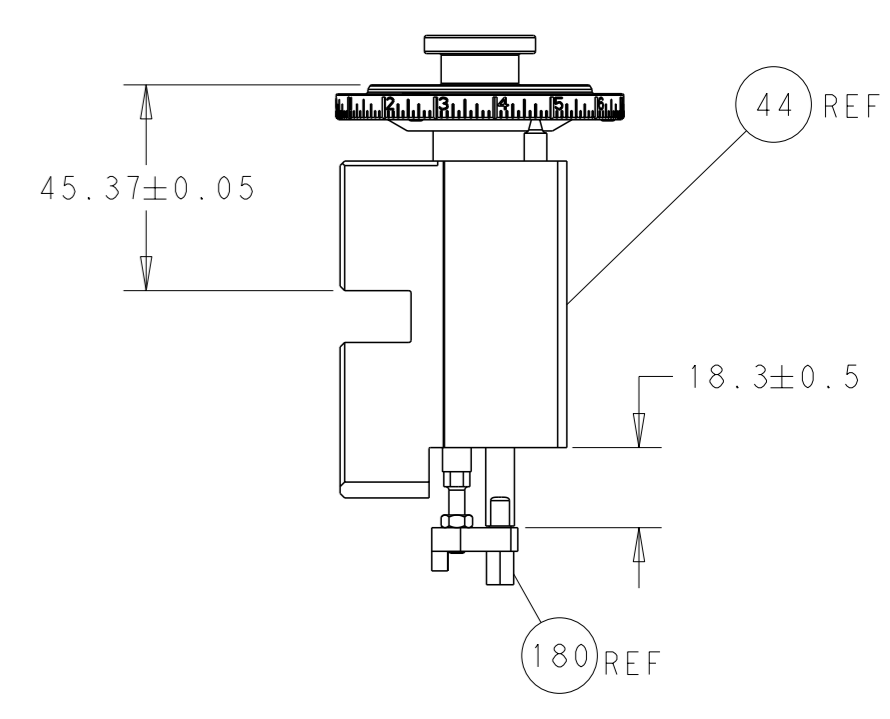


DETAIL A

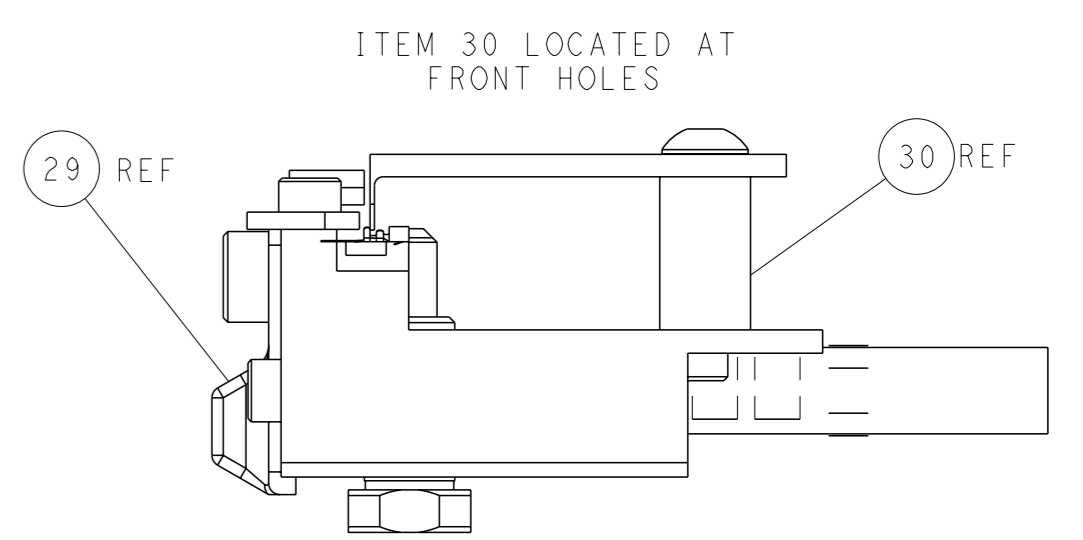
## CAM POSITION



TERMINAL SUPPORT LOCATION



RAM AND HOLDDOWN SET-UP



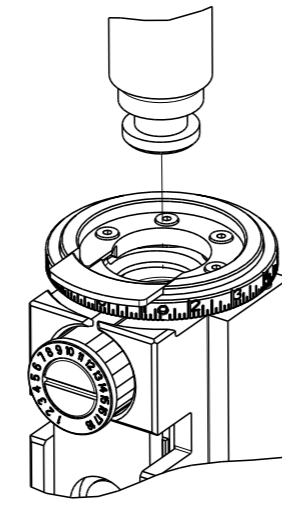
FEED TRACK POSITION  
GUIDE BY INSULATION BARREL

**ATLANTIC VERSION**  
 Shown on sheets 1 of 4 & 2 of 4  
 (Pacific version shown on sheets 3 of 4 & 4 of 4)

|   |                    |  |   |
|---|--------------------|--|---|
| <small>THIS DRAWING IS UNPUBLISHED. RELEASED FOR PUBLICATION 20<br/>                 © COPYRIGHT 20 BY TYCO ELECTRONICS CORPORATION. ALL RIGHTS RESERVED.</small> |                    | DWN T. BROOKS 17MAY2018<br>CHK R. KNEPPER 17MAY2018<br>APVD J. ELBIN 17MAY2018 | NAME Ocean Side Feed Applicator<br>SIZE A1<br>CAGE CODE 00779<br>DRAWING NO. C=2837270<br>SCALE 1:2<br>SHEET 2 of 4<br>REV D1 |
| DIMENSIONS: mm<br>TOLERANCES UNLESS OTHERWISE SPECIFIED:<br>0 PLC ±<br>1 PLC ±<br>2 PLC ±<br>3 PLC ±<br>4 PLC ±<br>ANGLES FINISH ±                                | WEIGHT<br>MATERIAL | RESTRICTED TO  | CUSTOMER ACCESSIBLE PRODUCTION DRAWING  |

| THIS DRAWING IS UNPUBLISHED.                                       | RELEASED FOR PUBLICATION |                          |           |
|--|--------------------------|--------------------------|-----------|
| COPYRIGHT 20 BY TYCO ELECTRONICS CORPORATION. ALL RIGHTS RESERVED. |                          |                          |           |
| PART NUMBER  | REVISION                 | DESCRIPTION              | FEED TYPE |
| 2-2837270-2  | D                        | FINE CRIMP HEIGHT ADJUST | PNEUMATIC |
| 7-2837270-7  | A                        | CRIMP TOOLING KIT        | -         |

PACIFIC VERSION TERMINATOR INTERFACE ADAPTER



| APPLICATOR DATA                   |                |      |
|-----------------------------------|----------------|------|
| CRIMP                             | SIZE           | TYPE |
| WIRE                              | 0.70 mm [.028] | F    |
| INSUL                             | 0.75 mm [.030] | F    |
| APPLICATOR INSTRUCTIONS 408-35042 |                |      |

| TERMINAL DATA: MOLEX TERMINAL                 |                     | MOLEX CRIMP SPECIFICATION          |                |
|---|---------------------|------------------------------------|----------------|
| TERMINAL NAME: 1.0mm PITCH WIRE TO BOARD CONN |                     |                                    |                |
| WIRE STRIP LENGTH                             |                     | TERMINAL INSULATION DIAMETER RANGE |                |
| 1.00-1.30 mm [.039-.051 IN]                   |                     | Ø0.40-0.80 mm [.016-.031 IN]       |                |
| TERMINAL APPLICATION SPECIFICATION            | ATS-639019400 Rev C |                                    |                |
| TERMINALS APPLIED                             |                     |                                    |                |
| TE TERMINAL                                   | MOLEX TERMINAL      | TE TERMINAL                        | MOLEX TERMINAL |
| 3311207-1                                     | 501334-0000         | 3311207-3                          | 501193-3000    |
| 3311207-2                                     | 501193-2000         | 3311207-4                          | 501193-0099    |
| 3311207-5                                     | 501193-5000         | 3311207-6                          | 501193-6000    |
| 3311207-7                                     | 501193-8000         | 3311207-8                          | 501193-9000    |
| 3311207-9                                     | 501193-7000         |                                    |                |

| WIRE SIZE | CRIMP HEIGHT mm [INCH]        | CRIMP HEIGHT REFERENCE SETTING |
|-----------|-------------------------------|--------------------------------|
| 28 AWG    | 0.46 +/- 0.02 [.018 +/- .001] | 7.1                            |
| 30 AWG    | 0.43 +/- 0.02 [.017 +/- .001] | 7.4                            |
| 32 AWG    | 0.41 +/- 0.02 [.016 +/- .001] | 7.6                            |



- 1 RECOMMENDED SPARE PARTS
- 2 REFER TO SUPPLIED INSTRUCTION SHEET FOR CLEANING, LUBRICATION AND STORAGE OF APPLICATOR.
- 3 APPLY PART NUMBER 1-23419-5 LOCTITE TO THREADS OF ITEM 180. APPLY PART NUMBER 2-23419-6 LOCTITE TO THREADS OF ITEM 242.
- 4 CRIMP HEIGHT REFERENCE SETTING WAS THE SETTING USED WHEN THE APPLICATOR WAS QUALIFIED AT THE FACTORY. ADJUSTMENT MAY BE NECESSARY WHEN RUNNING APPLICATOR IN THE FIELD.
- 5 UNLESS SPECIFIED OTHERWISE TORQUE VALUES SHALL BE USED PER DOCUMENT, 101-35000.
- 6 TERMINAL PITCH NOT COMPATIBLE WITH MECHANICAL FEED.
- 7 TERMINAL LUBRICANT IS RECOMMENDED.
- 8 PART OPTIONAL FOR BETTER LEADMAKER PERFORMANCE.

**\*WARNING**  
ON INSTALLATION, SET WIRE DISC TO CRIMP HEIGHT REFERENCE SETTING FOR LARGEST WIRE SIZE. CRIMP HEIGHT REFERENCE SETTINGS GREATER THAN THE VALUE SHOWN MAY CAUSE DAMAGE TO THE CRIMP TOOLING. REFER TO THE INSTRUCTION SHEET FOR PROPER SETUP AND ADJUSTMENTS.

**PACIFIC VERSION**  
Shown on sheets 3 of 4 & 4 of 4  
(Atlantic version shown on sheets 1 of 4 & 2 of 4)

| LOC | DIST | REV | DESCRIPTION | DATE | OWN | APVD |
|-----|------|-----|-------------|------|-----|------|
| A   | 66   | -   | SEE SHEET 1 | -    | -   | -    |

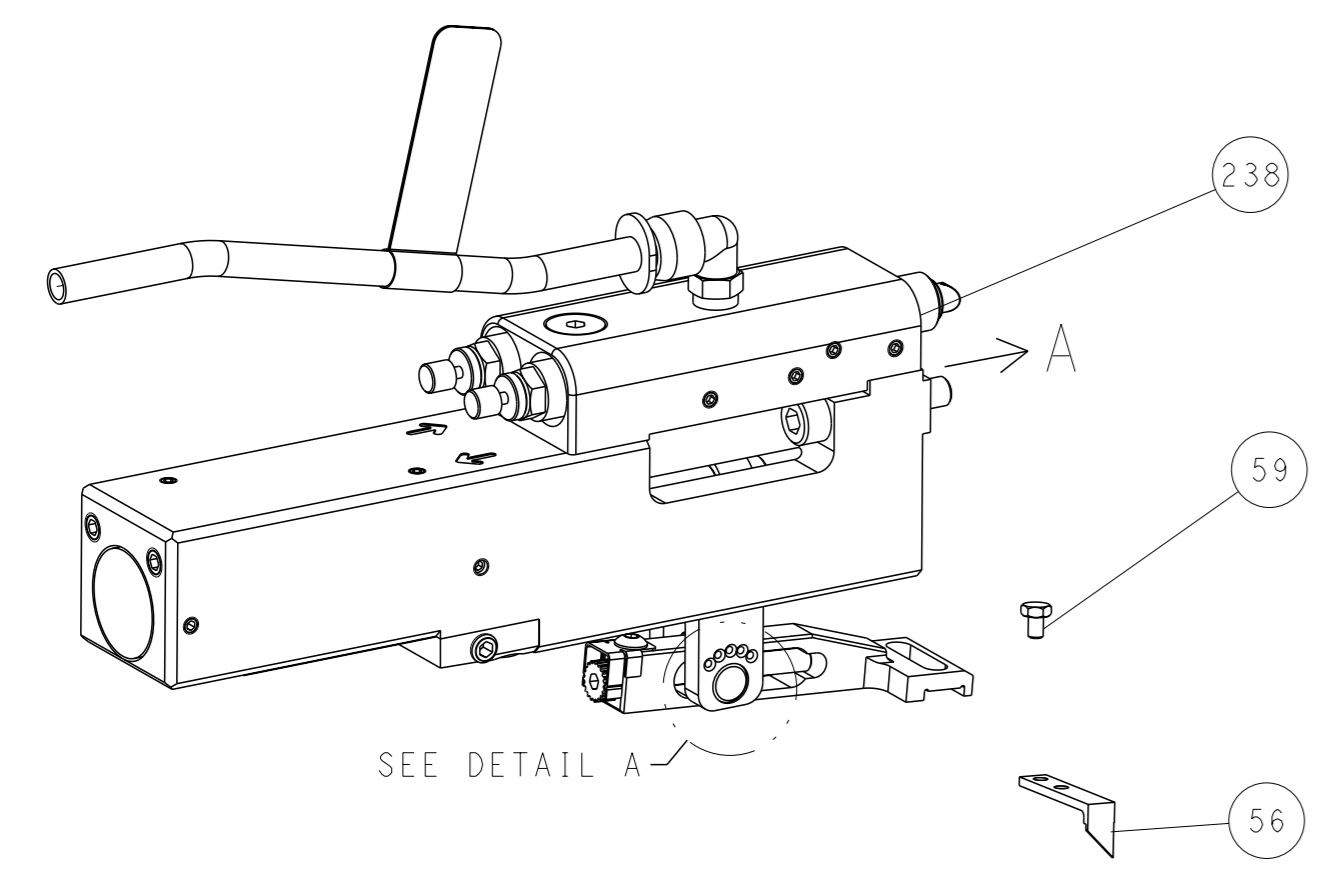
| QTY | LOC | DESCRIPTION                                   | DATE        | OWN     | APVD |
|-----|-----|---|-------------|---------|------|
| -   | 1   | 2079383-1 SCR, BHSC, RoHS (M3 X 8)            | 284         |         |      |
| -   | 1   | 1633289-4 STABILIZER                          | 283         |         |      |
| -   | 1   | 1803461 HOLDER, STABILIZER                    | 282         |         |      |
| -   | 1   | 1-18028-3 WASHER, FLAT, REG M5                | 281         |         |      |
| -   | 1   | 1803196-1 STUD, ADJUSTMENT SCREW              | 280         |         |      |
| -   | 1   | 2330046-1 RESIN COLLAR, FLANGED               | 261         |         |      |
| -   | 1   | 2119082-5 CAM, SNAIL, INSULATION ADJUSTMENT   | 244         |         |      |
| -   | 1   | 2079764-1 WASHER, WAVE SPRING, CREST-TO-CREST | 243         |         |      |
| -   | 1   | 2119083-1 RETAINER, INSULATION DIAL           | 242         |         |      |
| -   | 1   | 2844940-1 AIR FEED MODULE                     | 238         |         |      |
| -   | 2   | 1-2079383-0 SCR, BHSC, RoHS (M3 X 6)          | 230         |         |      |
| -   | 1   | 1-1752354-4 STANDOFF, HOLD-DOWN               | 180         |         |      |
| -   | 1   | 2-1633764-2 HOLD DOWN, TERMINAL               | 179         |         |      |
| -   | 1   | 993111-1 PIN, SLOTTED SPRING 3.0 X 20.0       | 177         |         |      |
| -   | 1   | 8-22280-7 SPRING, COMPRESSION                 | 176         |         |      |
| -   | 1   | 1752353-2 GUIDE PIN, HOLDDOWN                 | 175         |         |      |
| -   | 1   | 1901680-2 GUIDE PIN, HOLDDOWN                 | 174         |         |      |
| -   | REF | 994970-2 COUNTER, MAGNETIC                    | 164         |         |      |
| -   | 1   | 2119641-2 FEED CAM, AIR FEED                  | 151         |         |      |
| -   | 1   | 2161425-2 SCREW, SHOULDER                     | 144         |         |      |
| -   | 4   | 2168083-9 SCR, SKT HD CAP, RoHS, M4 X 20      | 143         |         |      |
| -   | 1   | 3-1803583-0 APPLICATOR BASIC ASSEMBLY, SF     | 141         |         |      |
| -   | 1   | 1803516-1 RAM ASSEMBLY, SF PACIFIC            | 140         |         |      |
| -   | 1   | 1-22281-6 SPRING, COMPRESSION                 | 121         |         |      |
| -   | 1   | 2119955-1 ASSY, LUBRICATOR, SIDE FEED         | 113         |         |      |
| -   | 1   | 2844908-1 SCREW, LOCKING                      | 99          |         |      |
| -   | 1   | 2844907-1 POST, LOCKING                       | 98          |         |      |
| -   | 1   | 1-690438-0 FRONT STRIP GUIDE                  | 96          |         |      |
| -   | 2   | 2168083-1 SCR, SKT HD CAP, RoHS, M3 X 8.0     | 95          |         |      |
| -   | 1   | 1-994962-8 SCR, SKT HD CAP M3 X 45.0          | 93          |         |      |
| -   | 1   | 1803607-3 DOCUMENTATION PACKAGE               | 71          |         |      |
| -   | 1   | 2-2119791-2 DEPRESSOR, WIRE                   | 70          |         |      |
| -   | 1   | 2119740-1 TAG, IDENTIFICATION                 | 67          |         |      |
| -   | 2   | 2168078-1 SCREW, DRIVE, RH, RoHS, 2 x .188    | 66          |         |      |
| -   | 2   | 2-18032-5 SCR, SET, FLT PNT, M5 X 20.0        | 61          |         |      |
| -   | 1   | 5-18022-5 SCR, HEX HD CAP, M4 X 6.0           | 59          |         |      |
| -   | 1   | 1338685-1 PAWL, FEED                          | 56          |         |      |
| -   | 1   | 1-5018030-0 NUT, HEX, REG, RoHS, M3.5         | 52          |         |      |
| -   | 1   | 1901681-8 HOLDDOWN, TERMINAL                  | 51          |         |      |
| -   | 1   | 18023-9 SCR, SKT HD CAP M4 X 6.0              | 49          |         |      |
| -   | 1   | 1803602-1 SCR, BHSC, RoHS (M8 X 25)           | 41          |         |      |
| -   | 1   | 4-1752356-7 SUPPORT, TERMINAL                 | 34          |         |      |
| -   | 2   | 2079383-5 SCR, BHSC, RoHS (M4 X 20)           | 33          |         |      |
| -   | 2   | 2-2844962-3 SPACER, CYLINDRICAL, STRIP GUIDE  | 30          |         |      |
| -   | 1   | 2844938-1 PLATE, STRIP GUIDE                  | 29          |         |      |
| -   | 1   | 455888-5 SPACER, CRIMPER                      | 28          |         |      |
| -   | 2   | 22281-8 SPRING, COMPRESSION                   | 27          |         |      |
| -   | 1   | 356835-1 LEVER, DRAG RELEASE                  | 26          |         |      |
| -   | 1   | 240792-1 DRAG, TERMINAL                       | 25          |         |      |
| -   | 1   | 1320928-6 STRIP GUIDE                         | 24          |         |      |
| -   | 1   | 980371-4 SCR, SKT HD SHLDR 5.0 DIA X 6.0      | 23          |         |      |
| -   | 1   | 2168083-2 SCR, SKT HD CAP, RoHS, M4 X 8.0     | 21          |         |      |
| -   | 2   | 1-18028-2 WASHER, FLAT, REG M4                | 20          |         |      |
| -   | 1   | 1803213-1 STRIPPER                            | 19          |         |      |
| -   | 1   | 3-22280-3 SPRING, COMPRESSION                 | 12          |         |      |
| -   | 1   | 1-356885-4 STOP, SHEAR                        | 11          |         |      |
| -   | 1   | 2119805-1 SHEAR HOLDER, FRONT                 | 10          |         |      |
| -   | 1   | 1803095-6 FLOATING SHEAR, FRONT               | 9           |         |      |
| -   | 1   | 1803655-4 ANVIL, COMBINATION                  | 8           |         |      |
| -   | -   | -   | 7           |         |      |
| -   | -   | -   | 6           |         |      |
| -   | 1   | 2-2119757-4 DEPRESSOR, SHEAR                  | 5           |         |      |
| -   | 1   | 2-238011-0 BLOCK, CRIMPER SPACER              | 4           |         |      |
| -   | 1   | 1-1803493-5 CRIMPER, INSULATION F PREMIUM     | 3           |         |      |
| -   | -   | -   | 2           |         |      |
| -   | 1   | 3-1803407-0 CRIMPER, WIRE PREMIUM             | 1           |         |      |
| -77 | -22 | PART NO                                       | DESCRIPTION | ITEM NO |      |

|                    |  |  |  |  |  |
|--------------------|--|--|--|--|--|
| DIMENSIONS: mm<br> |  | TOLERANCES UNLESS OTHERWISE SPECIFIED:<br>0 PLC ±<br>1 PLC ±<br>2 PLC ±<br>3 PLC ±<br>4 PLC ±<br>ANGLES FINISH ± |  | DWN T. BROOKS 17MAY2018<br>CHK R. KNEPPER 17MAY2018<br>APVD T. ELBIN 17MAY2018 | TE Connectivity<br>Harrisburg, PA 17105-3608 |
| MATERIAL:          |  | APPLICATION SPEC:  |  | NAME: Ocean Side Feed Applicator   |  |
| WEIGHT:            |  | SIZE: A1   |  | CASE CODE: 00779   |  |
| SCALE: 1:2         |  | SHEET: 3 OF 4  |  | REV: D1  |  |

| LOC | DIST | REVISIONS |     |             |      |     |      |
|-----|------|-----------|-----|-------------|------|-----|------|
| A   | 66   | P         | LYR | DESCRIPTION | DATE | OWN | APVD |
|     |      | -         |     | SEE SHEET 1 | -    | -   | -    |

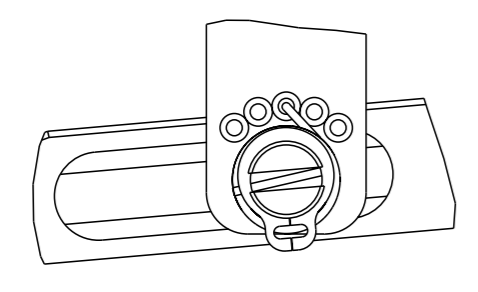
### FEED TYPE

#### PNEUMATIC



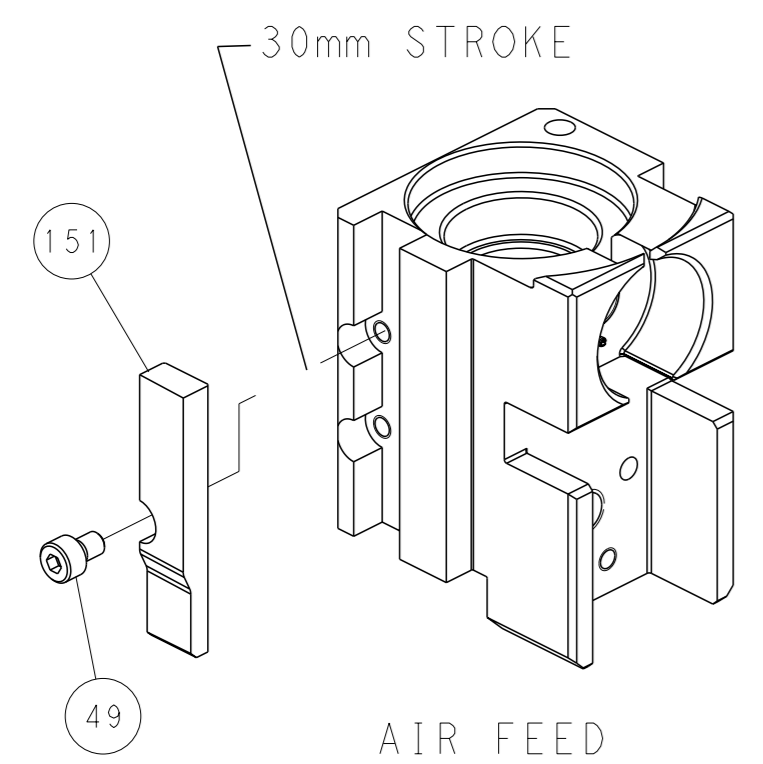
SEE DETAIL A

#### FEED SPRING SETTING POSITION (SHOWN FROM REAR SIDE)

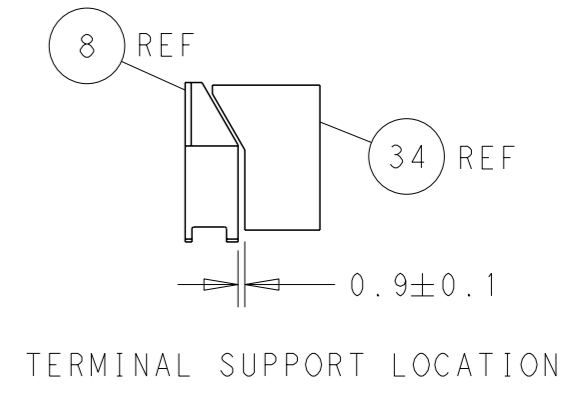
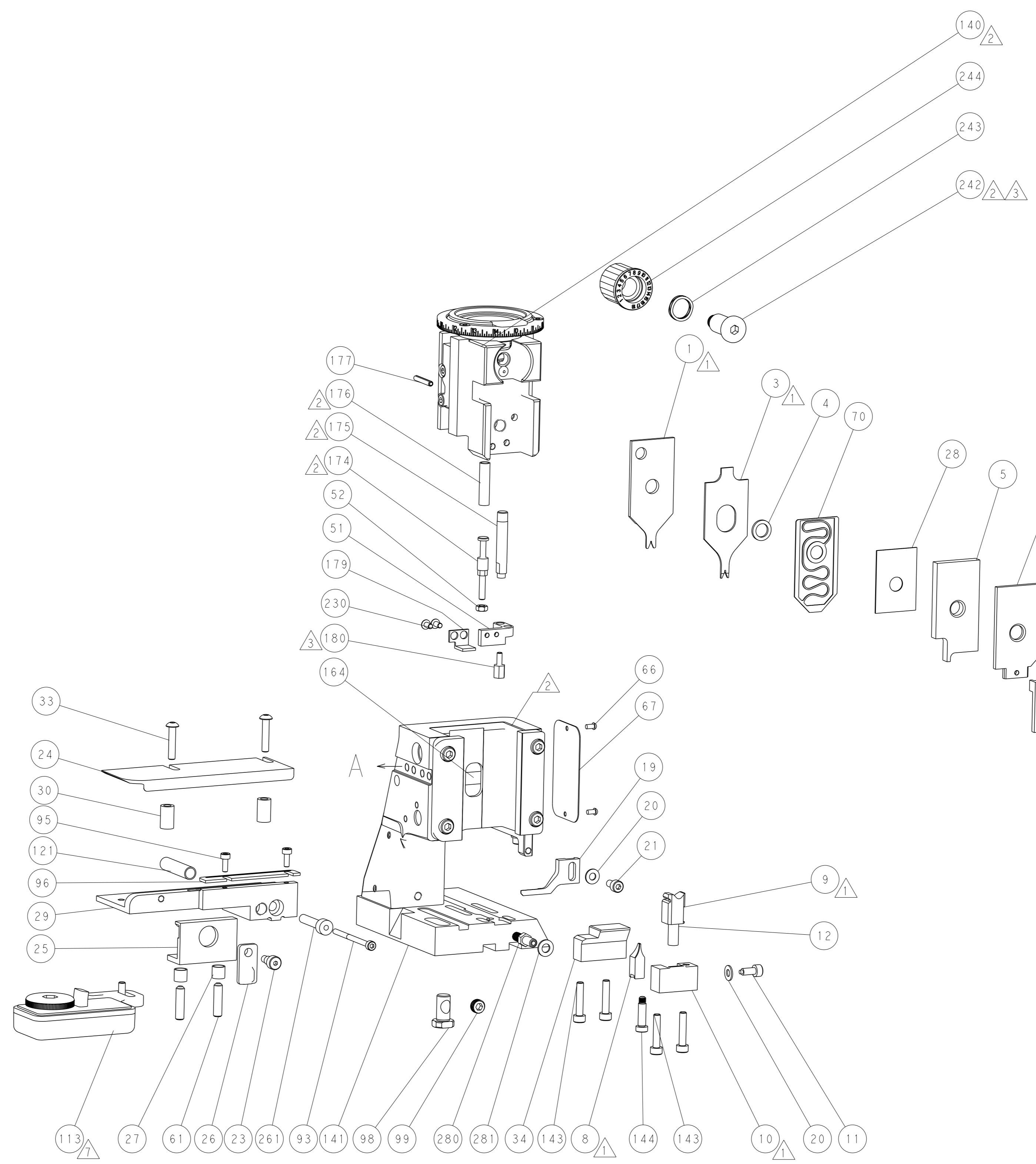


DETAIL A

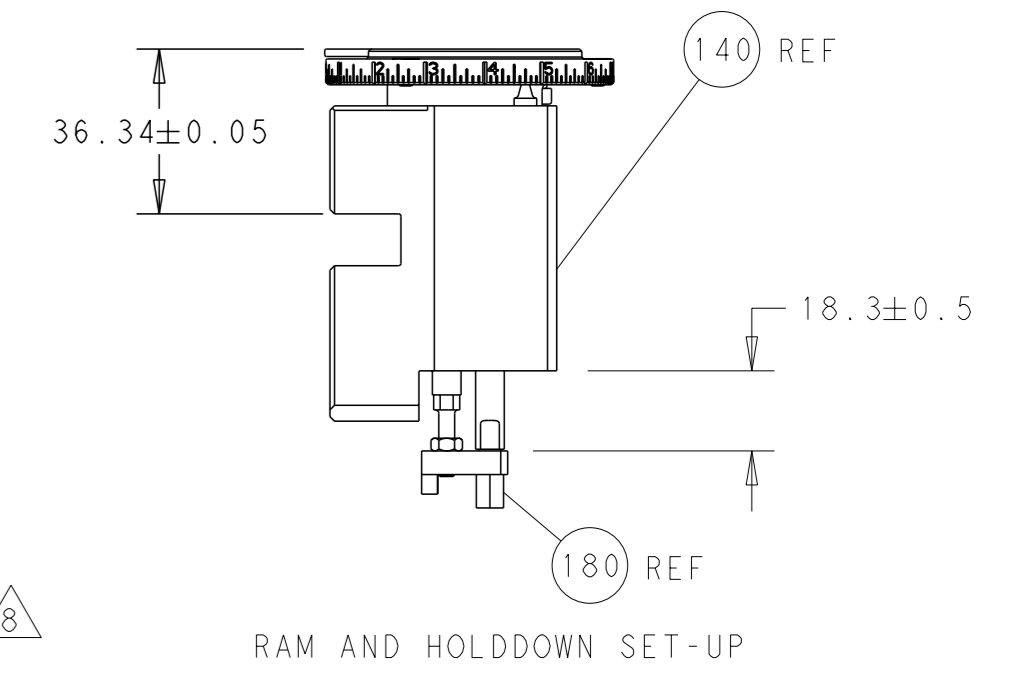
### CAM POSITION



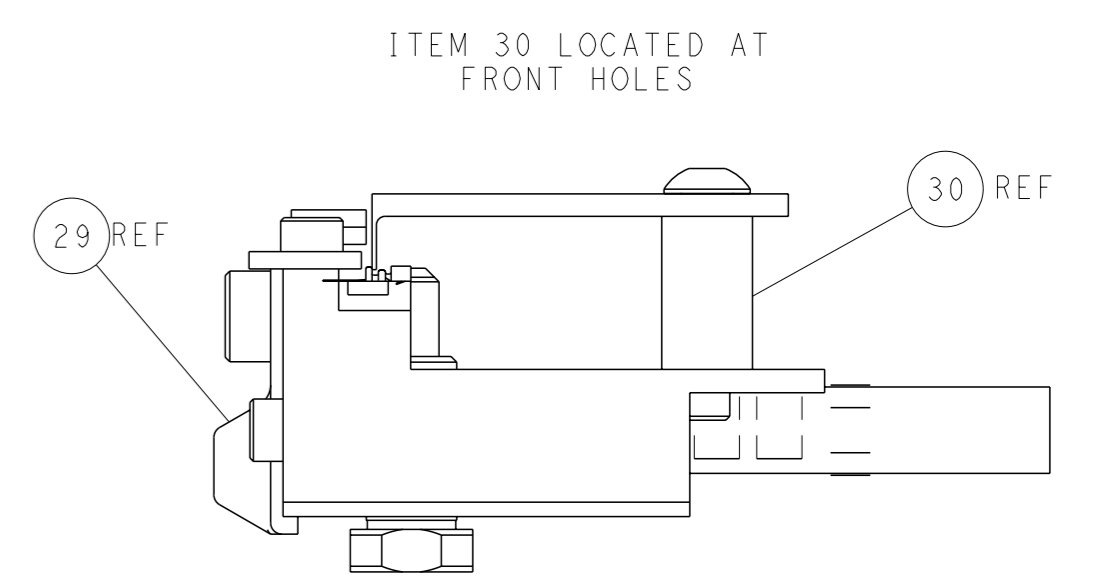
AIR FEED



TERMINAL SUPPORT LOCATION



RAM AND HOLDDOWN SET-UP



FEED TRACK POSITION GUIDE BY INSULATION BARREL

**PACIFIC VERSION**  
 Shown on sheets 3 of 4 & 4 of 4  
 (Atlantic version shown on sheets 1 of 4 & 2 of 4)

|  |  |   |  |
|--|--|---|--|
| <small>THIS DRAWING IS A CONTROLLED DOCUMENT FOR TYCO ELECTRONICS CORPORATION. IT IS SUBJECT TO CHANGE AND THE CONTROLLING ENGINEERING ORGANIZATION SHOULD BE CONTACTED FOR THE LATEST REVISION.</small> |  | DWN T. BROOKS 17MAY2018<br>CHK B. KNEPPER 17MAY2018<br>APVD T. ELBIN 17MAY2018  | TE Connectivity<br>Harrisburg, PA 17105-3608 |
| DIMENSIONS: mm<br>TOLERANCES UNLESS OTHERWISE SPECIFIED:<br>0 PLC ±<br>1 PLC ±<br>2 PLC ±<br>3 PLC ±<br>4 PLC ±<br>ANGLES FINISH ±   |  | NAME Ocean Side Feed Applicator<br>PRODUCT SPEC<br>APPLICATION SPEC<br>SIZE CAGE CODE DRAWING NO. RESTRICTED TO<br>A1 00779 C=2837270 | WEIGHT<br>SCALE 1:2 SHEET 4 OF 4 REV D1      |
| MATERIAL:  |  | Customer Accessible Production Drawing  |  |

单击下面可查看定价，库存，交付和生命周期等信息

[>>TE Connectivity\(泰科\)](#)