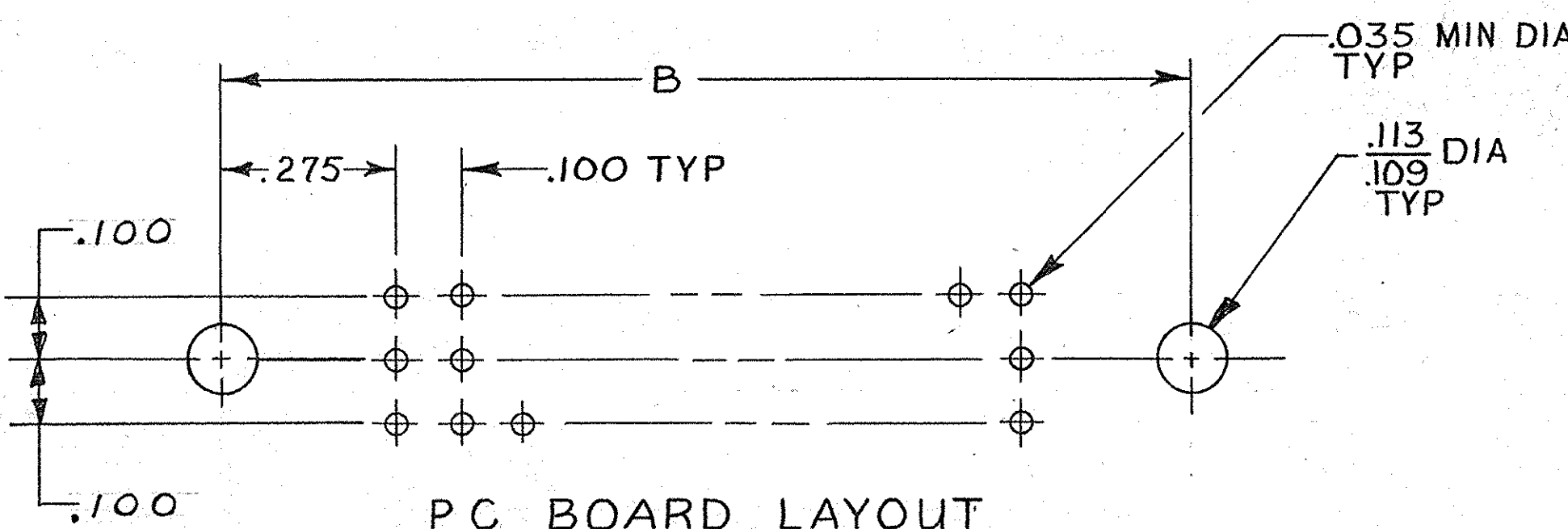
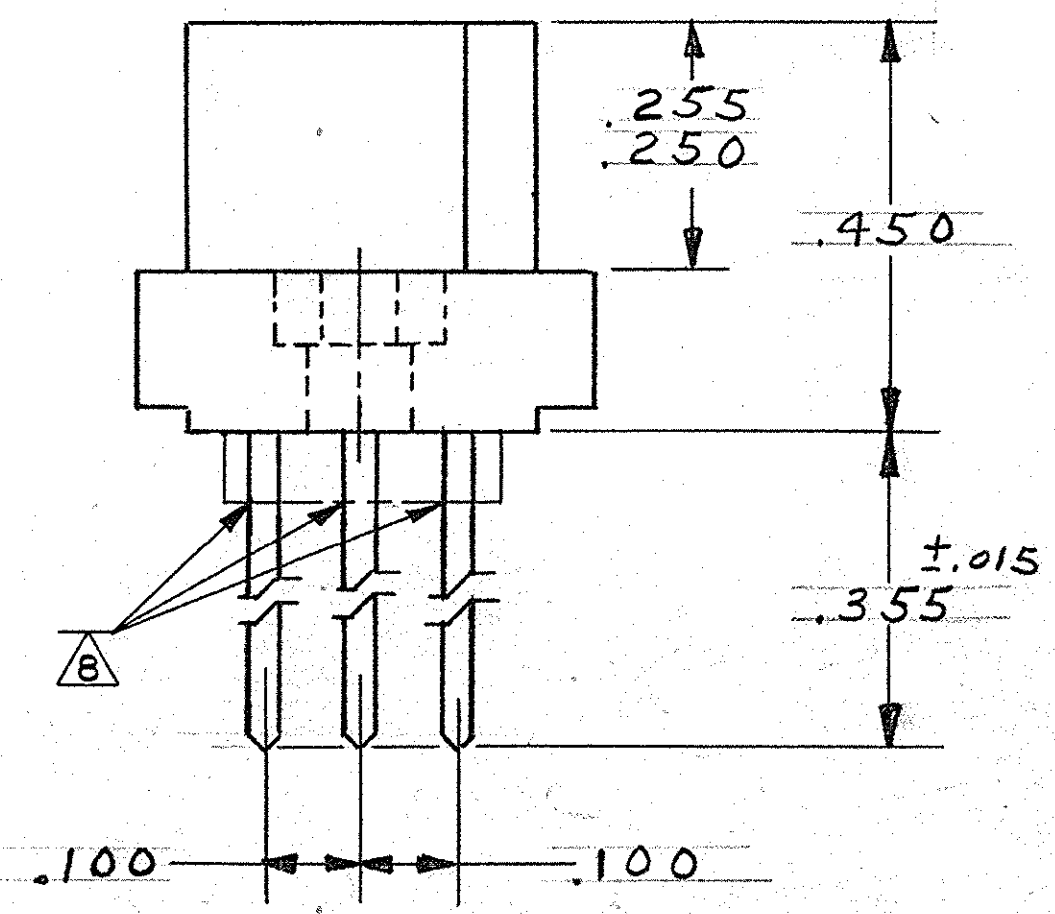
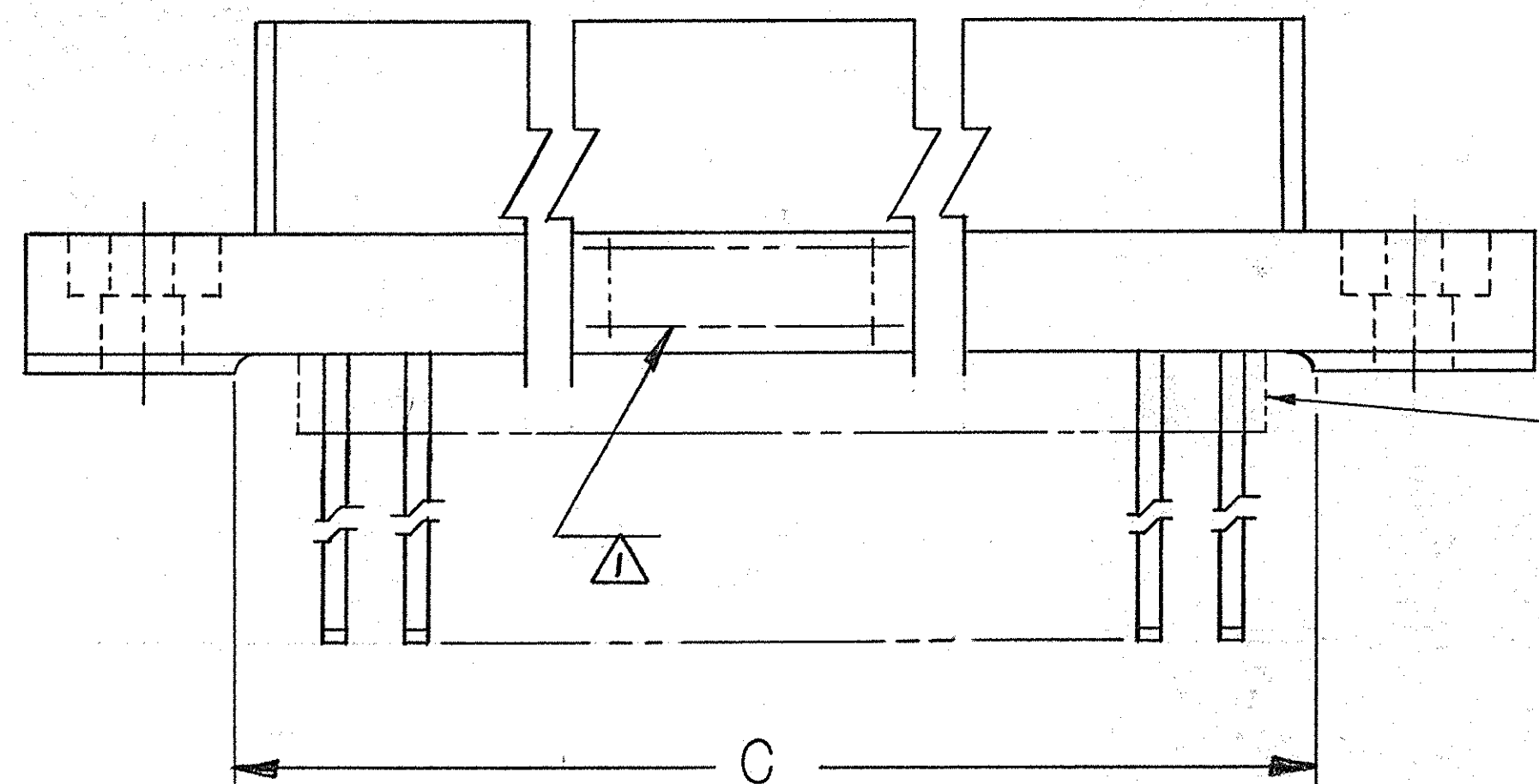
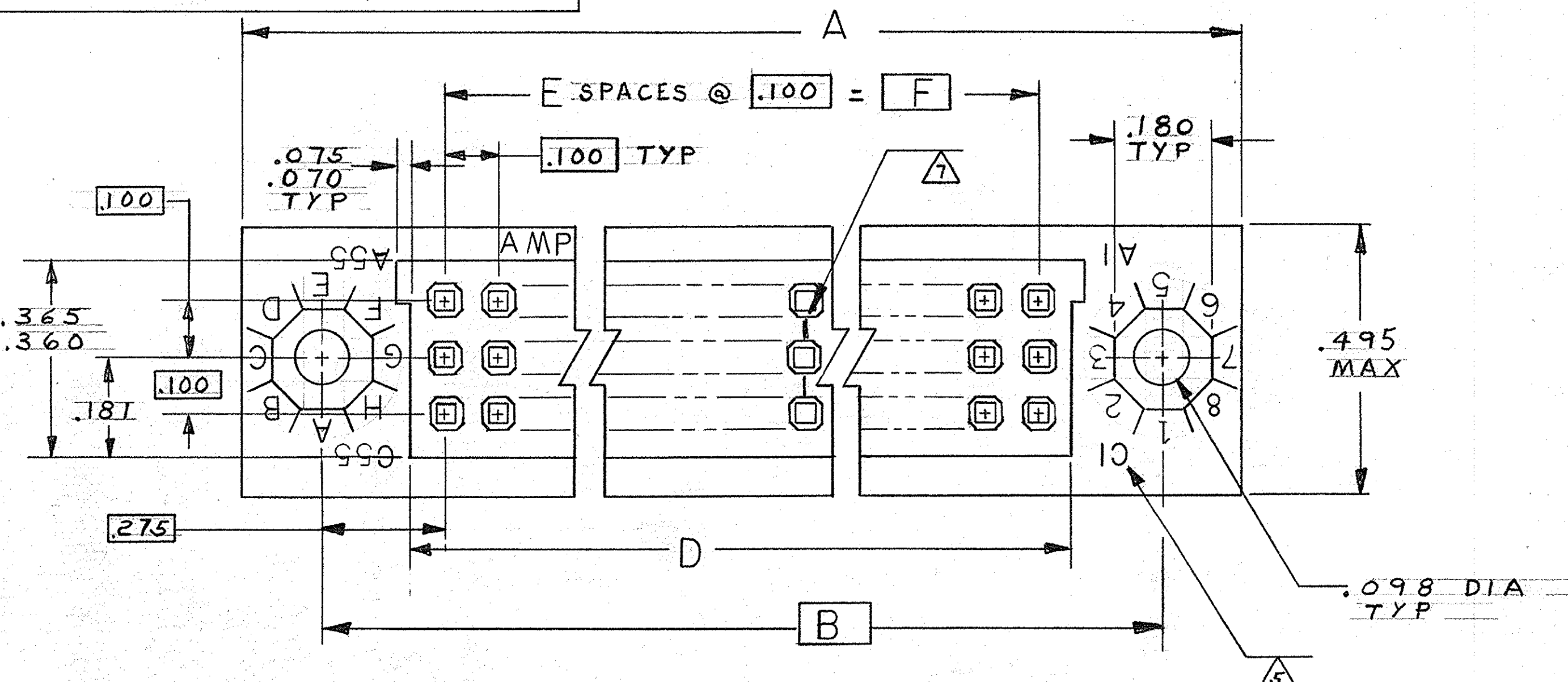


© COPYRIGHT 19 BY AMP INCORPORATED, HARRISBURG, PA.  
ALL INTERNATIONAL RIGHTS RESERVED, AMP INCORPORATED PRODUCTS  
COVERED BY U. S. AND FOREIGN PATENTS AND/OR PATENTS PENDING.

REVISIONS						
P	F	ZONE	LTR	DESCRIPTION	DATE	APPROVED
			O1	REVISED 6924 m.s.	10-80	RWD
			O2	ADDED 7119 SLE	1-8-81	WHP
			O3	REVISED ECN 7982 WPL	6-82	EAM
			A	REVISED 8171 m.s.	10-82	EAM
			B	REV PER ECN AB-0535 db	1-17-85	EAM
			C	ADDED -9; ECN AB-0943 db	7-3-85	EAM
			C1	ADD 1-0; ECN AB-1320 db	12-85	EAM
			C2	REV DIM; AB-1594 db	5-86	EAM
			D	REV PER DF-0457	5-11-88	SG QPB
			E	REV PER DF-0089 & DF-0117 KS	11-89	DCM
			F	REV PER DF-6974 TA	8-93	WHP
			G	REV 0600-5641-96	9-97	EAM
			H	REV PER ECO-05-01327B	11-05	RY



UNLESS OTHERWISE SPECIFIED DIMENSIONS ARE IN INCHES. TOLERANCES ON: DECIMALS ±.010 ANGLES ±		CONTRACT NO 4-21-80	PART NO	
MATERIAL 2 3		DR M Smith	AMP INCORPORATED Harrisburg, Pa.	
FINISH 4		CHK W. Fitchard Jr 5/5/80	NAME RECEPTACLE ASSY, .100 @, 3-ROW W/MOUNTING EARS, BOX CONTACT, WIRE WRAP POST	
		APPD W. Fitchard Jr 5/5/80	SIZE CODE IDENT NO DRAWING NO C 00779 531710	
		APPD E. Parsons 5/5/80	SCALE 5:1 SHEET 1 OF 2	
		DSGN APPD		
		OTHER APPD		

531710

© COPYRIGHT 19 BY AMP INCORPORATED, HARRISBURG, PA. ALL INTERNATIONAL RIGHTS RESERVED. AMP INCORPORATED PRODUCTS COVERED BY U. S. AND FOREIGN PATENTS AND/OR PATENTS PENDING.

REVISIONS					
P	F	ZONE	DESCRIPTION	DATE	APPROVED
			H. SEE SHEET 1		

- 1 AMP, DATE CODE, AND PART NUMBER MARKED THIS AREA
- 2 HOUSING MATERIAL: POLYPHENYLENE SULFIDE GST-40F PER MIL-M-24519.
- 3 CONTACT: BERYLLIUM COPPER OR COPPER-NICKEL-SILICONE
- 4 FINISH: .000050 GOLD OVER  
.000030 NICKEL
- 5 LETTERS INDICATING OUTSIDE ROW AND NUMBERS INDICATING END CAVITIES MARKED THIS SURFACE.
- 6. MIL-C-55302 GROUP A INSPECTION REQUIRED.
- 7 LINES INDICATING EVERY FIVE CAVITIES MARKED ON MATING FACE.
- 8 EPOXY ADDED TO AREA WHERE THE CONTACT POSTS EMERGE FROM THE STABILIZER TO INSURE POST TRUE POSITION.

	II	3.900	39	4.024	4.125	4.450	4.750	120	1-531710-0
OBSOLETE	II	5.900	59	6.024	6.125	6.450	6.750	180	531710-9
OBSOLETE	I	7.900	79	8.024	8.125	8.450	8.750	240	531710-8
	I	6.900	69	7.024	7.125	7.450	7.750	210	-7
OBSOLETE	I	5.900	59	6.024	6.125	6.450	6.750	180	-6
	I	4.900	49	5.024	5.125	5.450	5.750	150	-5
OBSOLETE	I	3.900	39	4.024	4.125	4.450	4.750	120	-4
OBSOLETE	I	3.400	34	3.524	3.625	3.950	4.250	105	-3
OBSOLETE	I	2.900	29	3.024	3.125	3.450	3.750	90	-2
OBSOLETE	I	5.400	54	5.524	5.625	5.950	6.250	165	531710-1

TYPE	F	E	D	C	B	A	NO. OF POSN	PART NO
UNLESS OTHERWISE SPECIFIED DIMENSIONS ARE IN INCHES. TOLERANCES ON: DECIMALS ±.010 ANGLES ±		CONTRACT NO		AMP INCORPORATED Harrisburg, Pa.				
MATERIAL		DR M. Smith 4-21-80		NAME RECEPTACLE ASSEMBLY, 100 C, WITH MOUNTING EARS, BOX CONTACT, WIRE WRAP POST.				
FINISH		CHK W. Litchard Jr 5/5/80		SIZE CODE IDENT NO DRAWING NO C 00779 531710				
		APPD W. Litchard Jr 5/5/80		SCALE				
		APPD E. Parsons 5/5/80		SHEET 2				
		DSGN APPD						
		OTHER APPD						

531710

单击下面可查看定价，库存，交付和生命周期等信息

[>>TE Connectivity\(泰科\)](#)