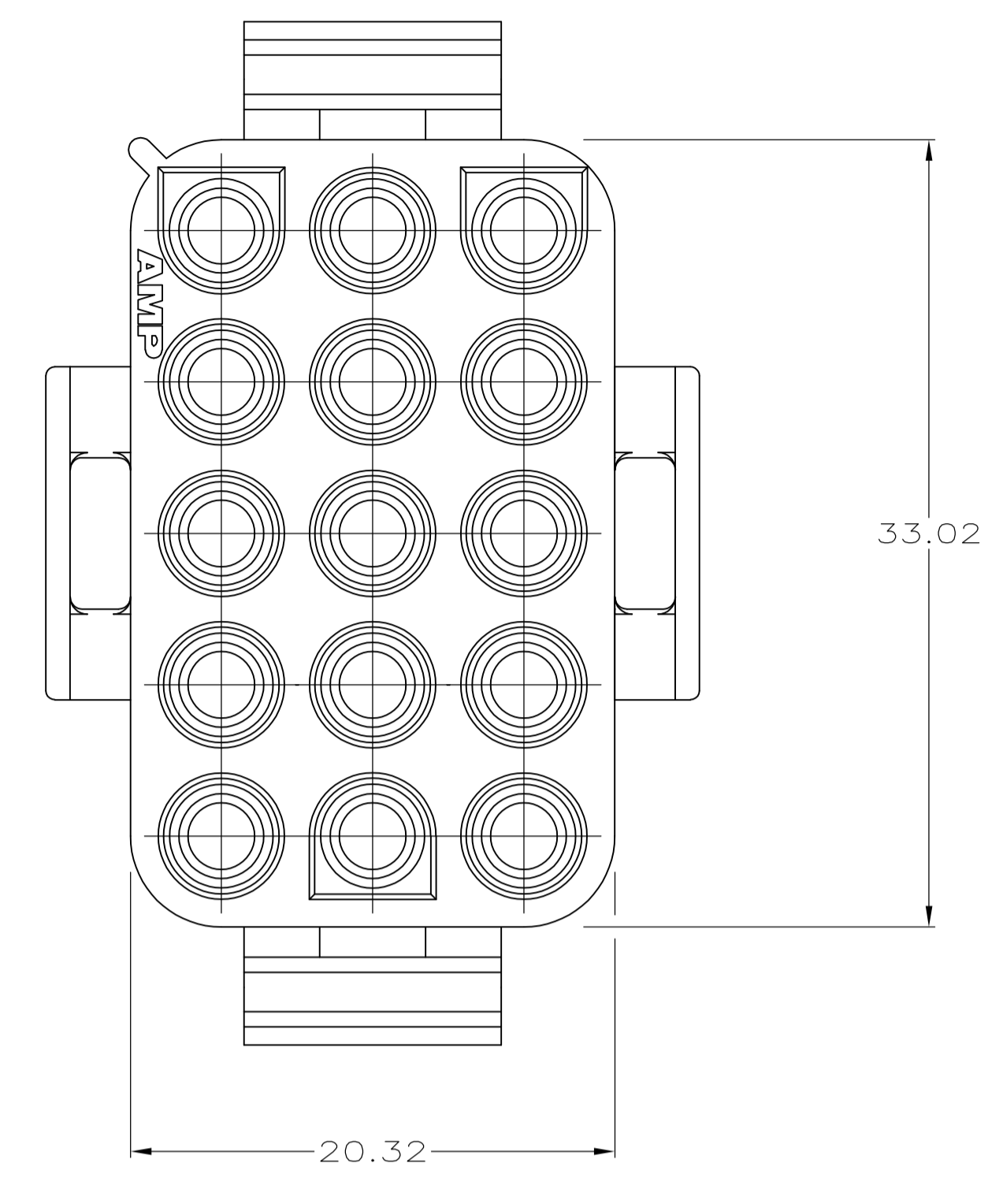
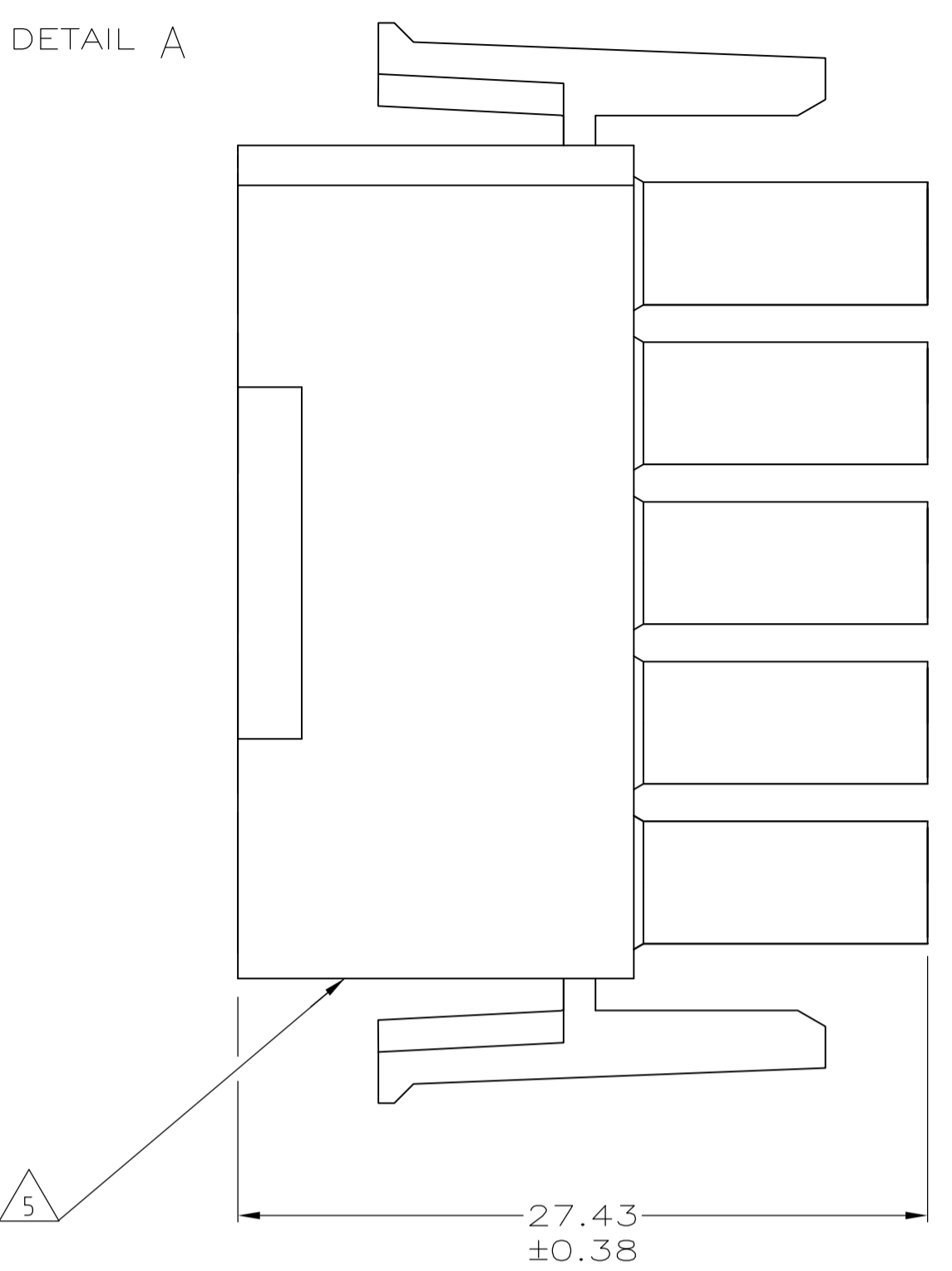
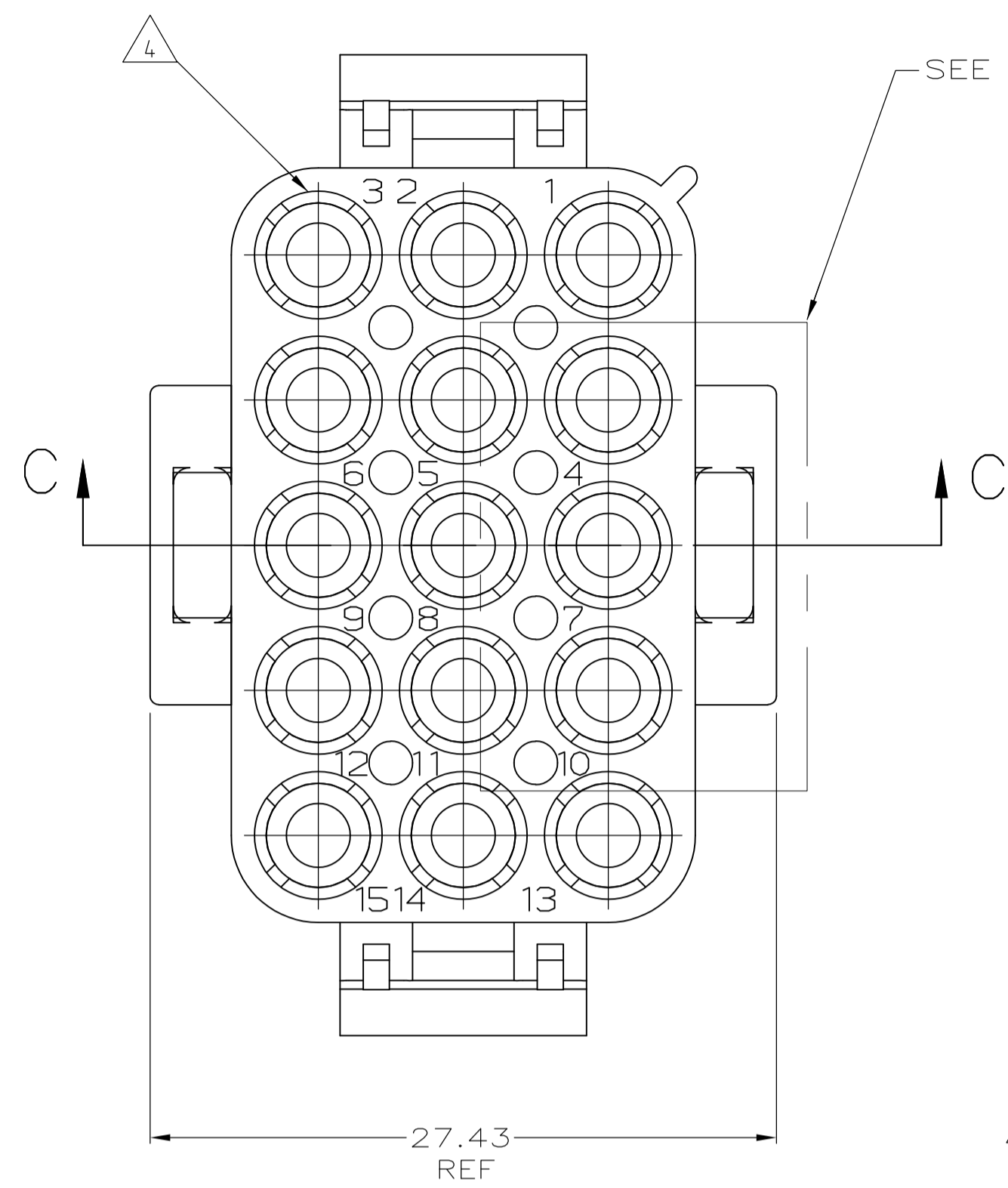
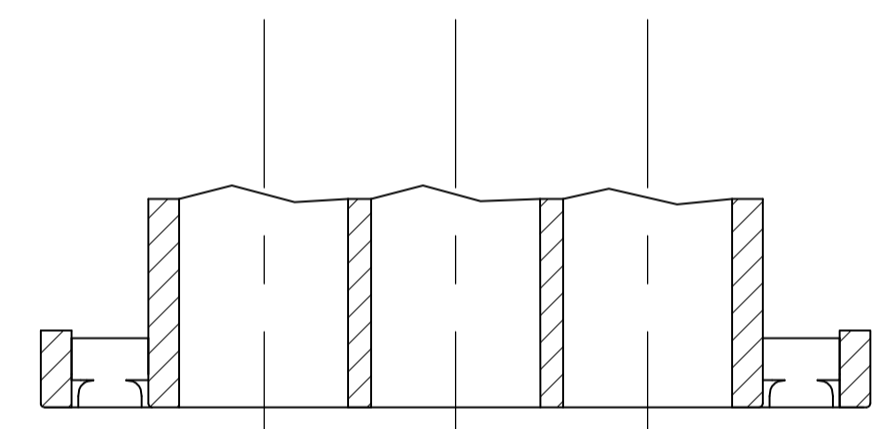


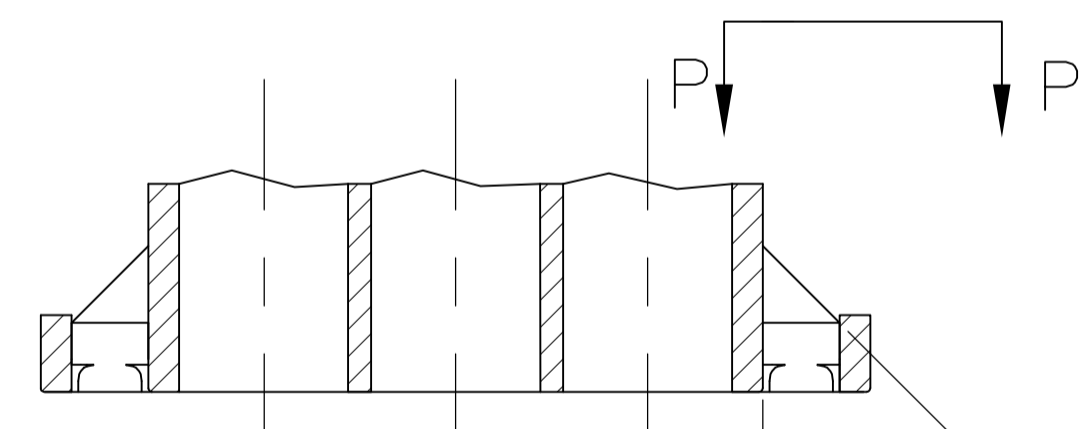
REVISIONS					
P	LTR	DESCRIPTION	DATE	DMN	APVD
B1		REVISED PER ECO-17-011927	22AUG2017	RS	KR



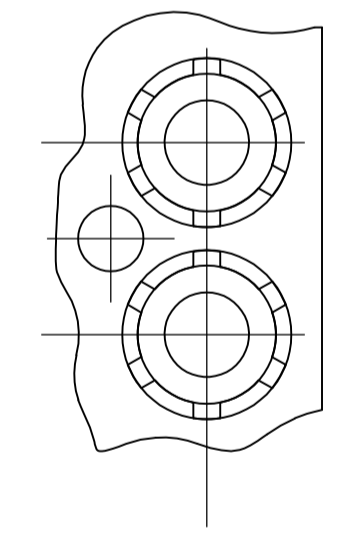
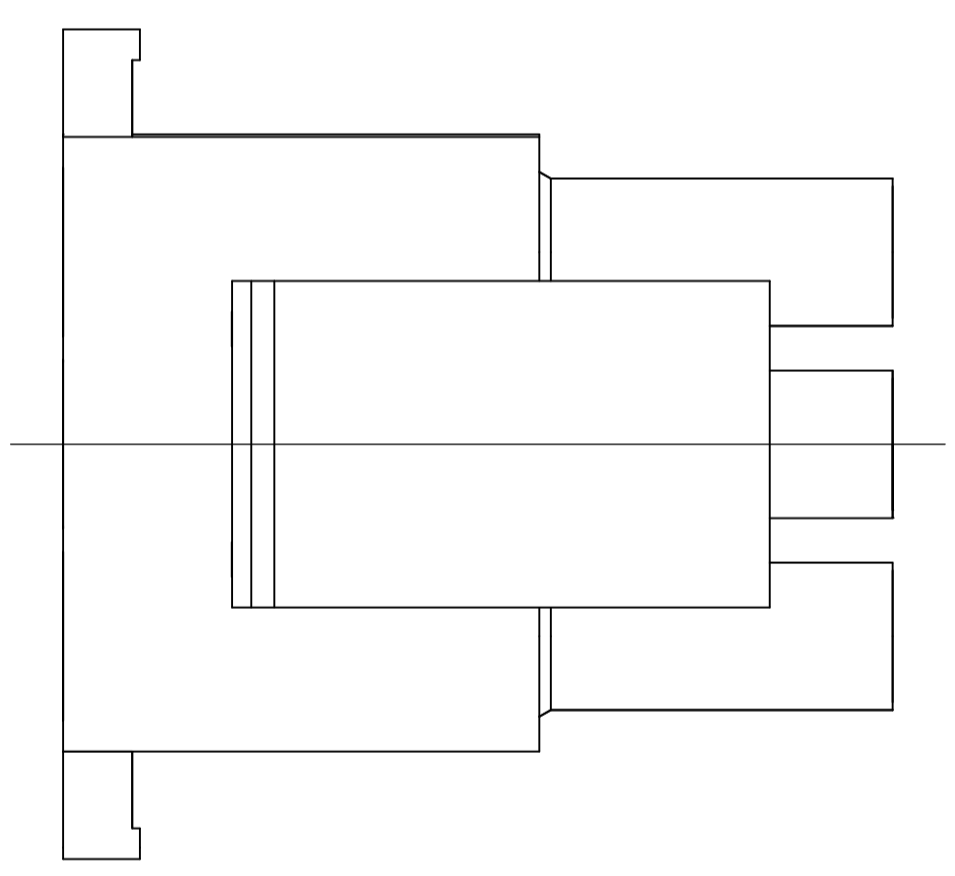
- MATES WITH APPROPRIATE UNIVERSAL MATE-N-LOK™ CAP OR HEADER.
 - SMALL NICKS ARE PERMITTED ON THE CIRCUIT TOWERS WHICH COULD INCREASE THE INITIAL HOUSING MATING FORCE BY UP TO 4.4 NEWTONS (1.0 LBS). NO INDIVIDUAL NICKED TOWER SHALL INCREASE THIS FORCE BY OVER 2.2 NEWTONS (.5 LBS).
 - DIMENSIONS SHOWN REPRESENT PRODUCT IN DRY, AS MOLDED CONDITION ADDITIONAL 2% GROWTH DUE TO SUBSEQUENT MOISTURE ABSORPTION MAY OCCUR AND SHOULD BE ACCOUNTED FOR.
- △4 FOUR RIBS EQUALLY SPACED, NO SPECIFIC ORIENTATION. SIX RIBS EQUALLY SPACED, NO SPECIFIC ORIENTATION, OPTIONAL.
 - △5 UNDERWRITES RECOGNIZED COMPONENT LOGO AND CSA CERTIFICATION LOGO TO BE LOCATED ONCE EACH SIDE OF HOUSING.
 - 6 PHOSPHOR BRONZE CONTACTS SHOULD ALWAYS BE USED WITH THIS HOUSING



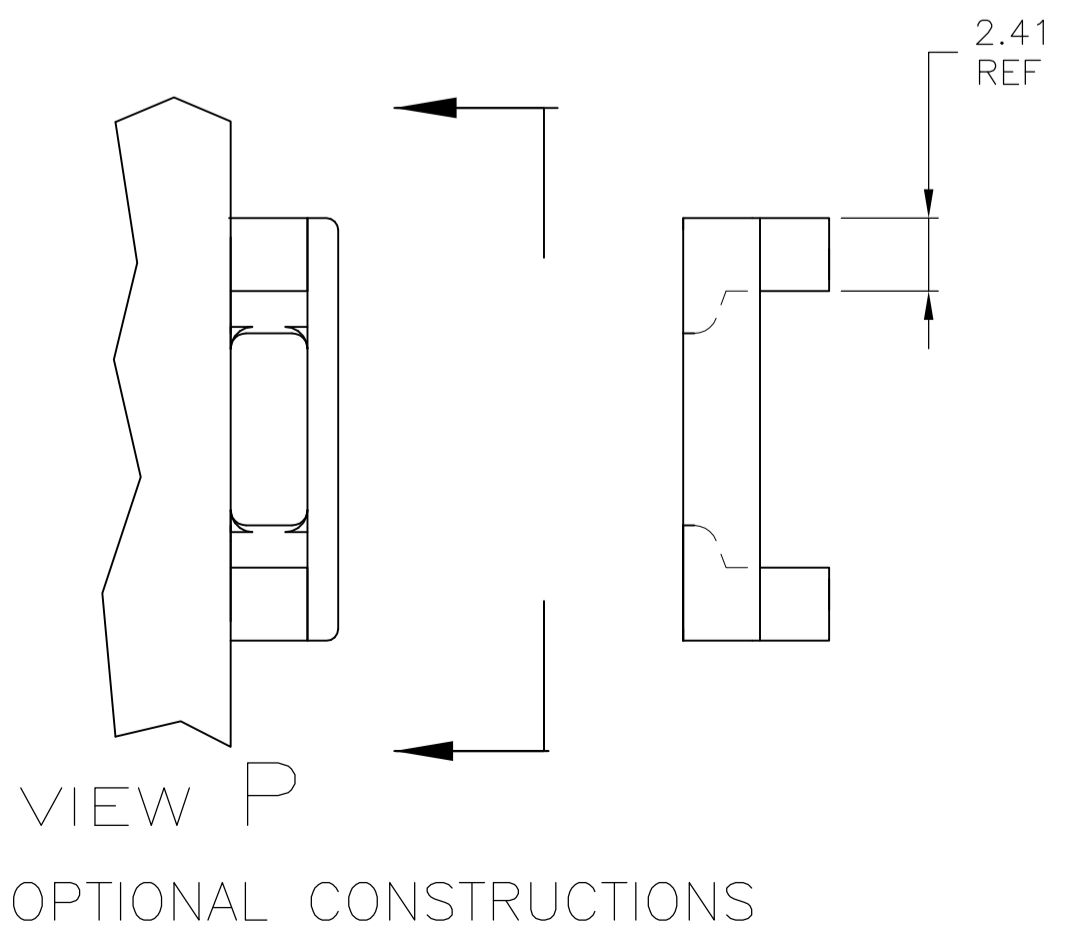
PARTIAL SECTION C-C



PARTIAL SECTION C-C
OPTIONAL CONSTRUCTION



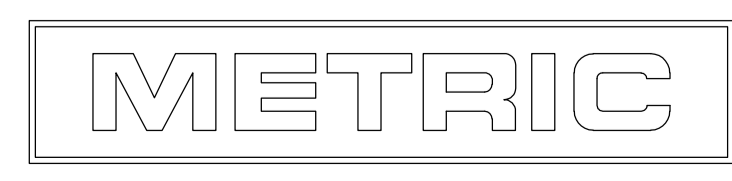
PARTIAL DETAIL A
OPTIONAL CONSTRUCTIONS



VIEW P
OPTIONAL CONSTRUCTIONS

33.02	1.300
27.43	1.080
20.32	.800
0.38	.015
0.13	.005
MM	IN

CONVERSION TABLE



THIS DRAWING IS A CONTROLLED DOCUMENT.		DMN: L. McEACHIN 14-JAN-2000	794546-1 PART NUMBER	
DIMENSIONS: mm		CHK: M. TRULL 14-JAN-2000	APVD: M. TRULL 14-JAN-2000	
TOLERANCES UNLESS OTHERWISE SPECIFIED:		NAME: PLUG, 15 CIRCUIT, UNIVERSAL MATE-N-LOK™		
0. PLC ± -		APPLICATION SPEC		
1. PLC ± -		SIZE: A1		
2. PLC ± 0.13		CAGE CODE: 794546		
3. PLC ± -		DRAWING NO: 00779		
4. PLC ± -		RESTRICTED TO: -		
ANGLES ± 0° 30'		WEIGHT: 0.000000		
MATERIAL: NYLON, UL 94V-2, BLACK		FINISH: -		
		CUSTOMER DRAWING		
		SCALE: 4:1 SHEET 1 OF 1 REV B1		

单击下面可查看定价，库存，交付和生命周期等信息

[>>TE Connectivity\(泰科\)](#)