

THIS DRAWING IS UNPUBLISHED. RELEASED FOR PUBLICATION 20  
 © COPYRIGHT 20 BY - ALL RIGHTS RESERVED.

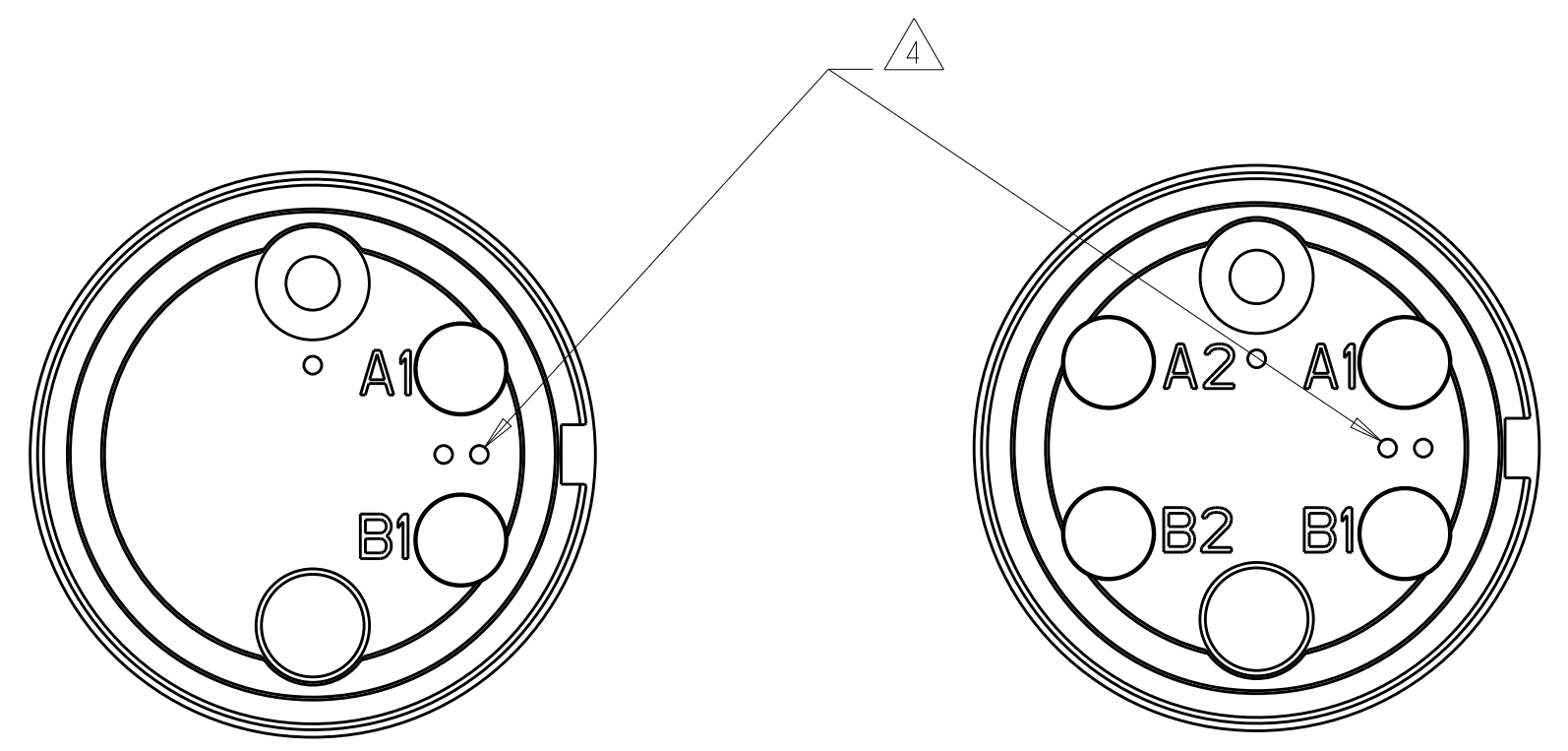
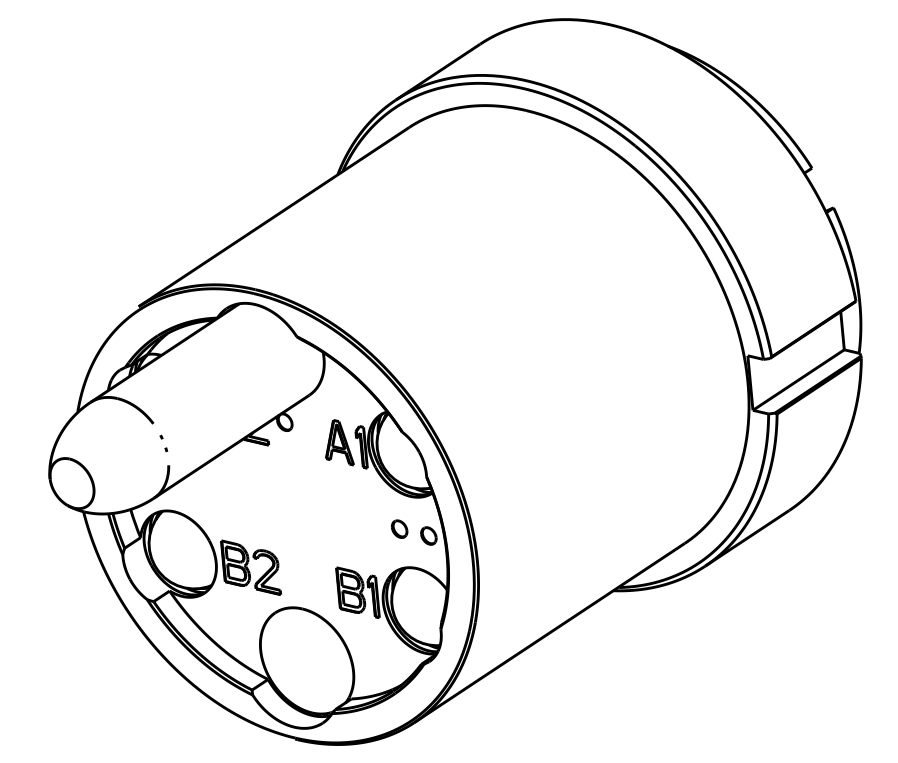
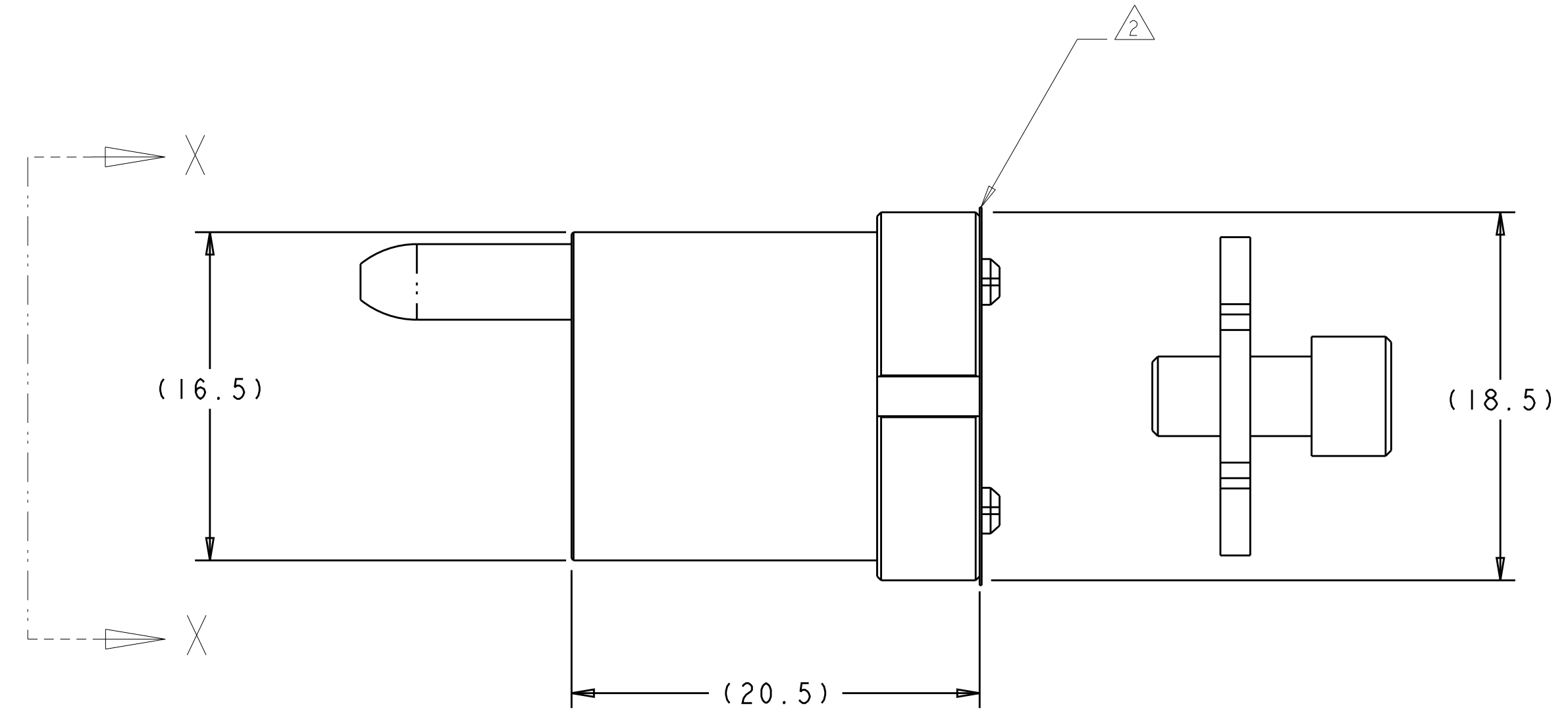
REVISIONS					
P	LTR	DESCRIPTION	DATE	DWN	APVD
	D1	ECR-12-003450	22FEB2012	KG	DW
	E	ECR-16-000809	15FEB2016	KG	DW
	E1	ECR-16-010381	03NOV2016	KG	DW
	F	ECR-17-014250	17OCT2017	KG	DW

1. USE WITH FERRULE ASSEMBLY KIT P/N 1515941-2 OR P/N 1588801-1.  
 QUANTITY OF 2 REQUIRED FOR 1693001-1. QUANTITY 4 REQUIRED FOR 1693001-2..

2. PROTECTIVE LABEL APPLIED AFTER FINAL CLEAN ROOM TEST TO PREVENT OPTICAL CAVITY CONTAMINATION. REMOVE ONLY WHEN READY TO ASSEMBLE.

3. THIS PRODUCT HAS NOT COMPLETED VALIDATION TESTING.

4. MULTIMODE IDENTIFIER.



1693001-1

1693001-2

VIEW X-X

4 CHANNEL, 850/1300nm MM	1693001-2
2 CHANNEL, 850/1300nm MM	1693001-1
DESCRIPTION	PART NUMBER

THIS DRAWING IS A CONTROLLED DOCUMENT.		DWN K. GLATFELTER 19APR2004	<b>STE</b> TE Connectivity	
DIMENSIONS: mm		CHK D. WERTMAN 04JUN2004		
TOLERANCES UNLESS OTHERWISE SPECIFIED:		APVD D. WERTMAN 18JUN2004	NAME INSERT ASSEMBLY, PRO BEAM SR.,	
0 PLC ±		PRODUCT SPEC	-	
1 PLC ±		APPLICATION SPEC	-	
2 PLC ±		WEIGHT	-	
3 PLC ±		SCALE	A2 4:1	
4 PLC ±		RESTRICTED TO	-	
ANGLES ±		SIZE	A2 00779	
FINISH		DRAWING NO	C-1693001	
MATERIAL STAINLESS ALLOYS- & NBR		CUSTOMER DRAWING	SCALE 4:1 SHEET OF REV F	
N/A				

单击下面可查看定价，库存，交付和生命周期等信息

[>>TE Connectivity\(泰科\)](#)