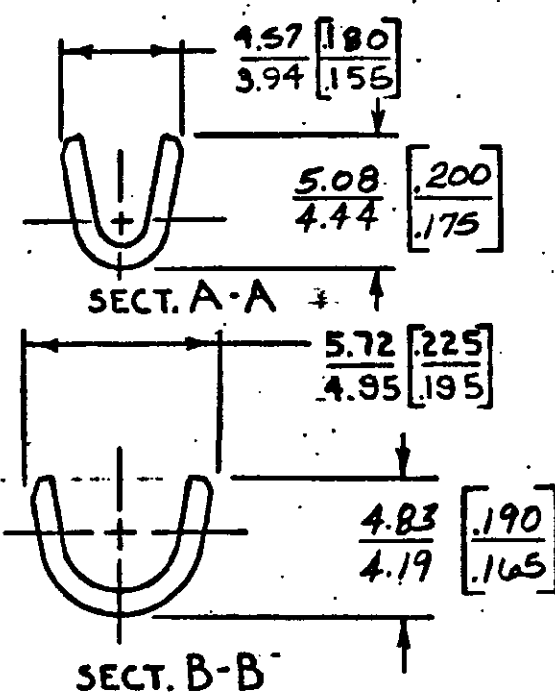
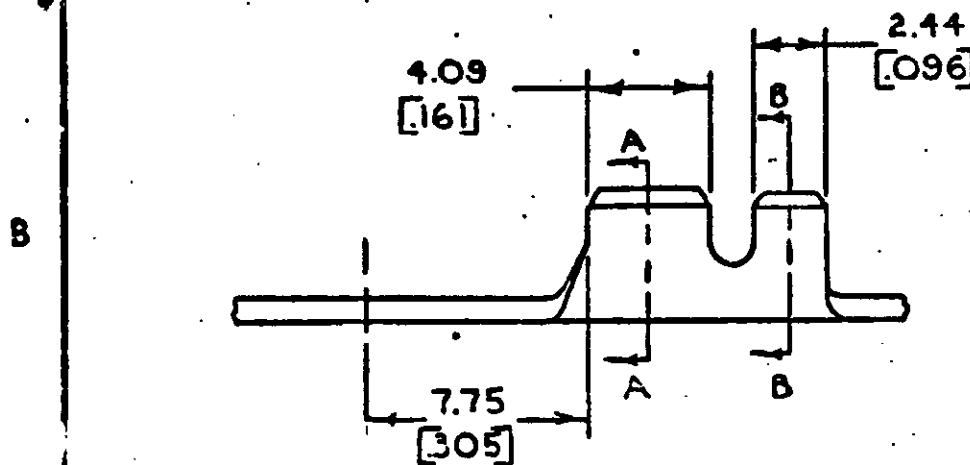
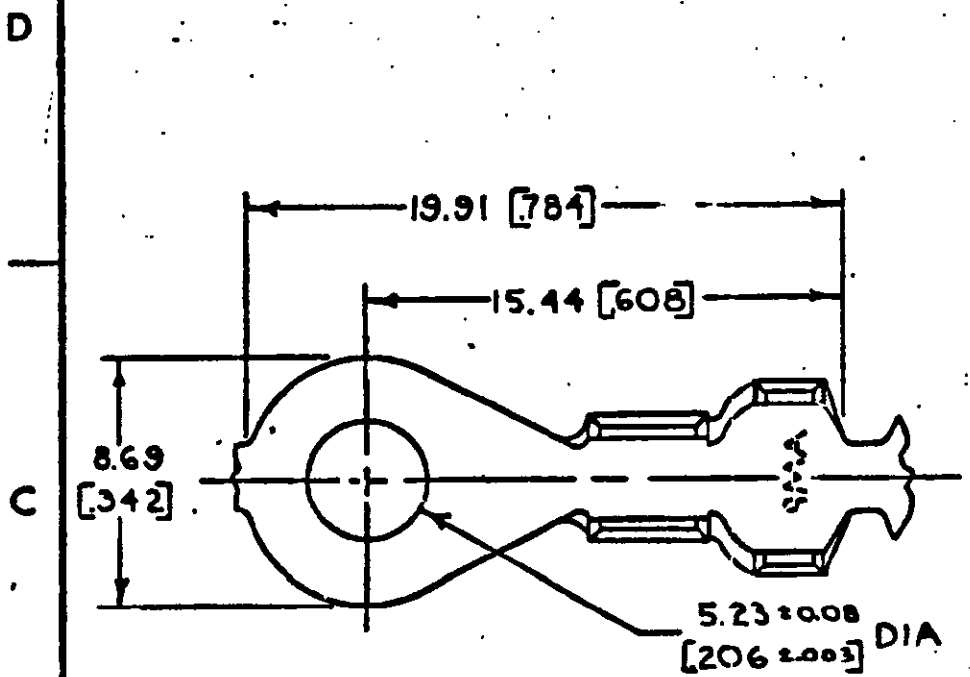


© COPYRIGHT 1963 BY AMP INCORPORATED, HARRISBURG, PA.
 ALL INTERNATIONAL RIGHTS RESERVED. AMP INCORPORATED PRODUCTS
 COVERED BY U. S. AND FOREIGN PATENTS AND/OR PATENTS PENDING.

		REVISIONS			LOC	DIST
P	S	ZONE	LTR	DESCRIPTION	DATE	APPROVE
✓	✓		S	REDRAWN & REVISED A-3943	4-7-78	DJS
✓	✓		T	REVISED PER AF0088	2/21/81	JR/64
✓	✓		U	REV. PER AF0230	8/10/81	JR/81
✓	✓		V	REVISED AF0686	12/12/81	JR/81
✓	✓		W	ADDED NOTE 3 PER AF 3768	11-1-88	DKS/08
			Y	OBSOLETE PER 0710-0273-96	19/1/86	Am/16
✓			Z	REACTIVATE PER 0110-0252-96	02/JAN/97	Am/64



1. CONTINUOUS STRIP ON REELS.
2. DIMENSIONS IN BRACKETS ARE IN INCHES.
3. FOREIGN PRODUCTION ONLY.

METRIC

M5-1008-20mm [8-14]	2.54-3.56 [100-140]	TIN	0.76 [030] BRASS	42007
STUD WIRE RANGE	INSULATION RANGE	FINISH	MATERIAL	PART NO
UNLESS OTHERWISE SPECIFIED DIMENSIONS ARE IN MILLIMETERS. TOLERANCES ON DECIMALS ± 0.38 [015] ANGLES ± 1° 0'	CONTRACT NO OR DFABIAN 4-7-74	AMP INCORPORATED Harrisburg, Pa.		
MATERIAL SEE TABLE	CHK L. J. ... 7-19-78	NAME RING		
FINISH SEE TABLE	APPR R. P. ... 8-1-78	SIZE B	CODE IDENT. NO 00779	DRAWING NO 42007
	APPR C. ... 8-1-78	SCALE	SHEET	

单击下面可查看定价，库存，交付和生命周期等信息

[>>TE Connectivity\(泰科\)](#)