

THIS DRAWING IS UNPUBLISHED.

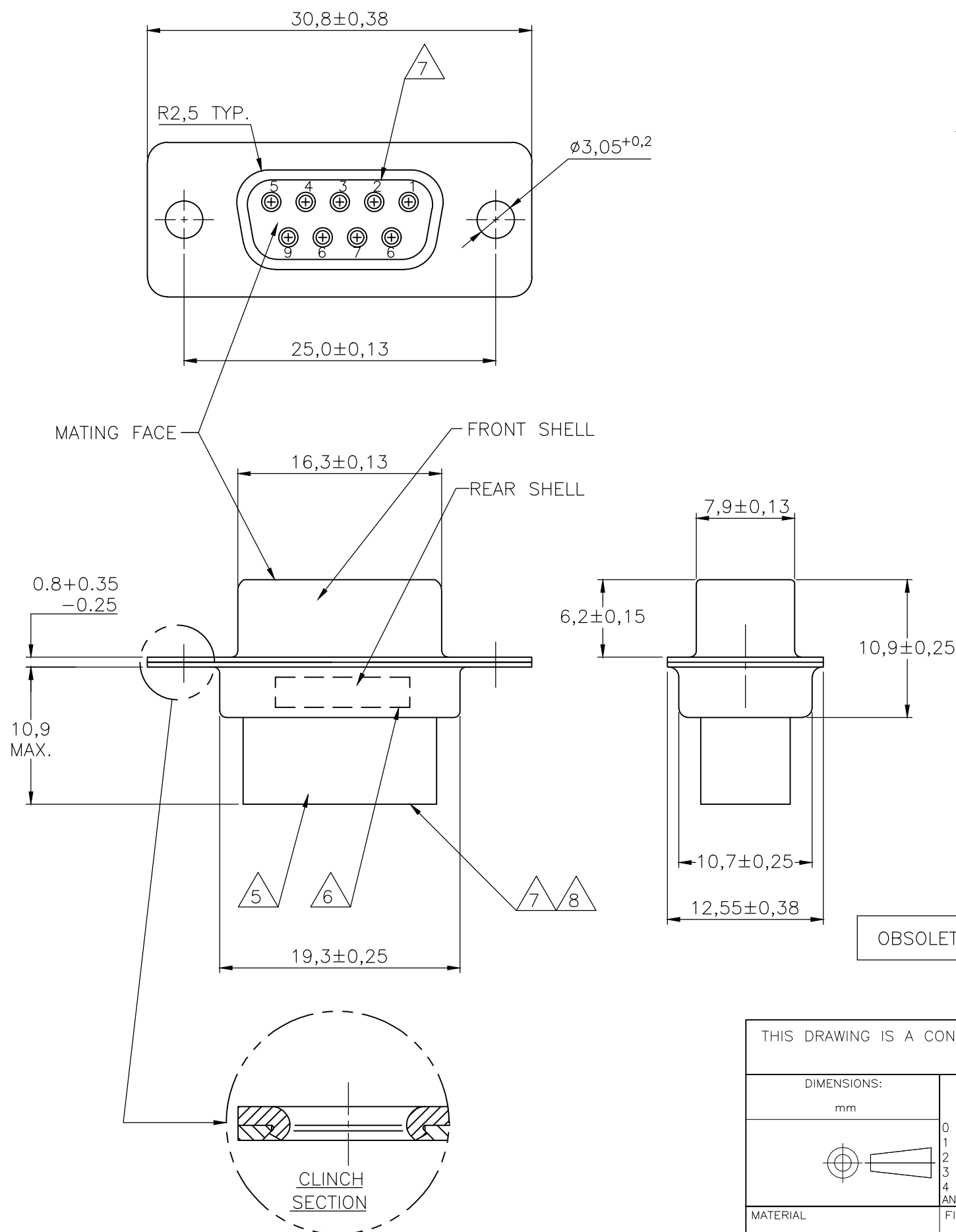
RELEASED FOR PUBLICATION

REVISIONS

© COPYRIGHT - By -

ALL RIGHTS RESERVED.

P	LTR	DESCRIPTION	DATE	DWN	APVD
P		REVISED PER ECO-17-014522	26APR2018	AP	DG



NOTES:

- THIS RECEPTACLE ACCEPTS SIZE 20 REC. CONTACTS.
- MAXIMUM WIRE INSULATION RECOMMENDED FOR USE WITH THIS RECEPTACLE IS 1,73 DIA. MAX..
- RETENTION TINES ARE AN INTEGRAL PART OF INSERT.
- FOLLOWING INSERTION/REMOVAL TOOLS ARE RECOMMENDED FOR USE WITH THESE CONNECTORS:
 - 32-28AWG/28-24AWG CONTACTS
 - 91067-3 INSERTION/REMOVAL
 - 726363-1 INSERTION ONLY
 - 24-20AWG CONTACTS
 - 726363-1 INSERTION ONLY
 - 726364-1 REMOVAL ONLY

OBSOLETE	BRIGHT TIN	BRIGHT TIN	STEEL	164531-9 $\triangle 8$
	BRIGHT TIN	BRIGHT TIN	STEEL	164531-4
	PLATING FRONT SHELL	PLATING REAR SHELL	MATERIAL SHELLS	PART NUMBER

THIS DRAWING IS A CONTROLLED DOCUMENT.		DWN D. KESSLER 11FEB99	STE TE Connectivity		
DIMENSIONS: mm		CHK W. SOOMERS			
TOLERANCES UNLESS OTHERWISE SPECIFIED:		APVD W. SOOMERS	NAME 9 POS HDP-20 RECEPTACLE CONNECTOR SIZE 1		
0 PLC $\pm -$		PRODUCT SPEC	APPLICATION SPEC		
1 PLC $\pm 0,2$		SIZE A3			
2 PLC $\pm -$		CAGE CODE -			
3 PLC $\pm -$		DRAWING NO C-164531			
4 PLC $\pm -$		RESTRICTED TO -			
ANGLES $\pm 2'$		SCALE NTS			
MATERIAL -		SHEET 1 OF 1			
FINISH -		REV P			
CUSTOMER DRAWING					

单击下面可查看定价，库存，交付和生命周期等信息

[>>TE Connectivity\(泰科\)](#)

[>>点击查看相关商品](#)