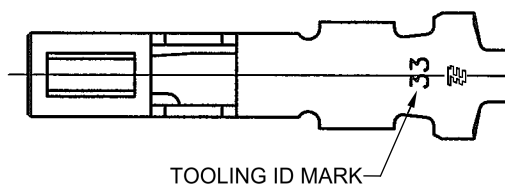
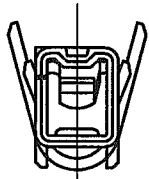
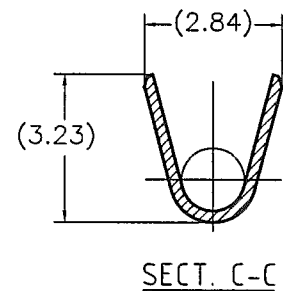
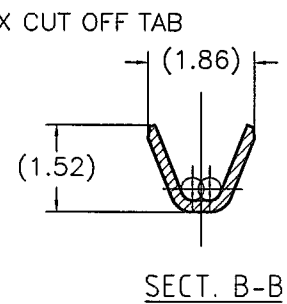
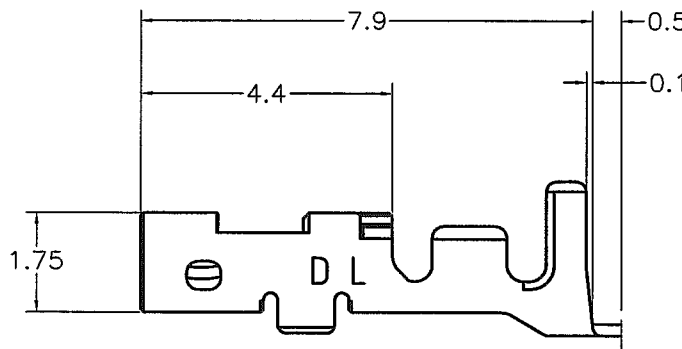
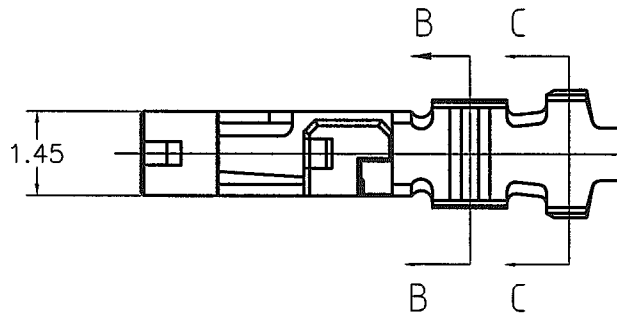


LOC J	DIST —	REVISIONS 変更			
P	LTR	DESCRIPTION	DATE	DWN	APVD
	C	REVISED PER ECR-15-011723	08AUG15	Y.O	E.T



NOTE

1. GENERAL TOLERANCE : $\pm 0.3, \pm 3^\circ$
2. Application REC-HSG is applied to the product of 2.5mm PITCH or more of DYNAMIC D1000SERIES. 2.0mmPITCH cannot be used

THIS DRAWING IS UNPUBLISHED.

ALL RIGHTS RESERVED.

COPYRIGHT BY TYCO ELECTRONICS CORPORATION.

1871744-1
PART No.

DIMENSIONS: 单位: 特 mm	DWN T.KUDO	1JUL2005	MATERIAL 材料 PRE-TIN COPPER ALLOY	FINISH 仕上		
	CHK D.MITSUGI	1JUL2005	TE Connectivity			
	APVD D.MITSUGI	1JUL2005				
	TOLERANCES UNLESS OTHERWISE SPECIFIED: 一般公差	PRODUCT SPEC 製品規格 108-78298	NAME 名称 DYNAMIC D1000 SERIES REC CONTACT (L TYPE) TIN PLATE (L/P)			
0 PLC ± 1 PLC ± 2 PLC ± 3 PLC ± 4 PLC ± ANGLES ±	APPLICATION SPEC 取付適用規格 114-5377	SIZE A4	CAGE CODE 00779	DRAWING NO 番号 C-1871744	RESTRICTED TO —	
	WEIGHT —	CUSTOMER DRAWING		SCALE 尺度 8:1	SHEET 1 OF 1	REV C

单击下面可查看定价，库存，交付和生命周期等信息

[>>TE Connectivity\(泰科\)](#)