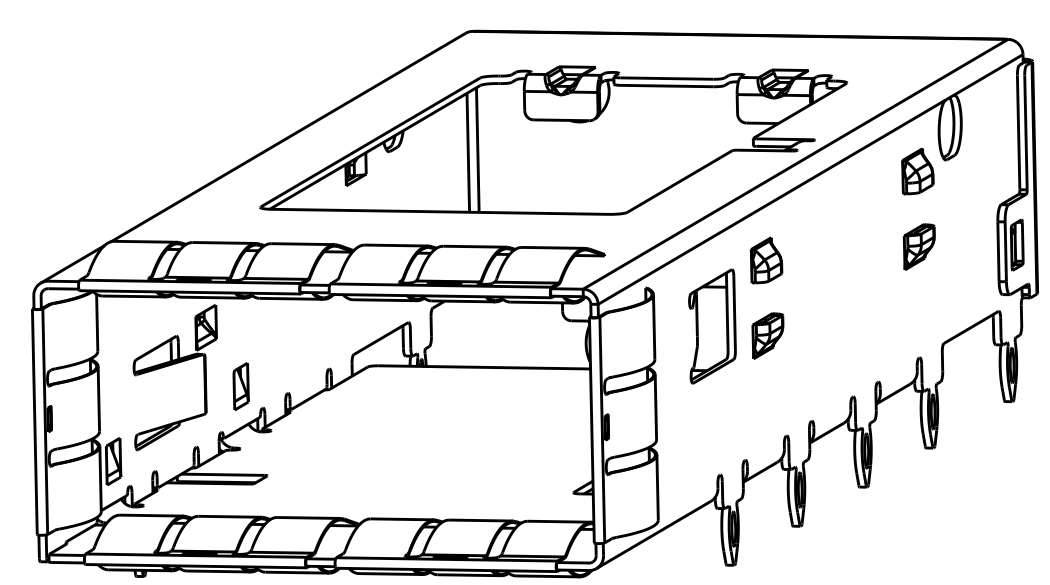
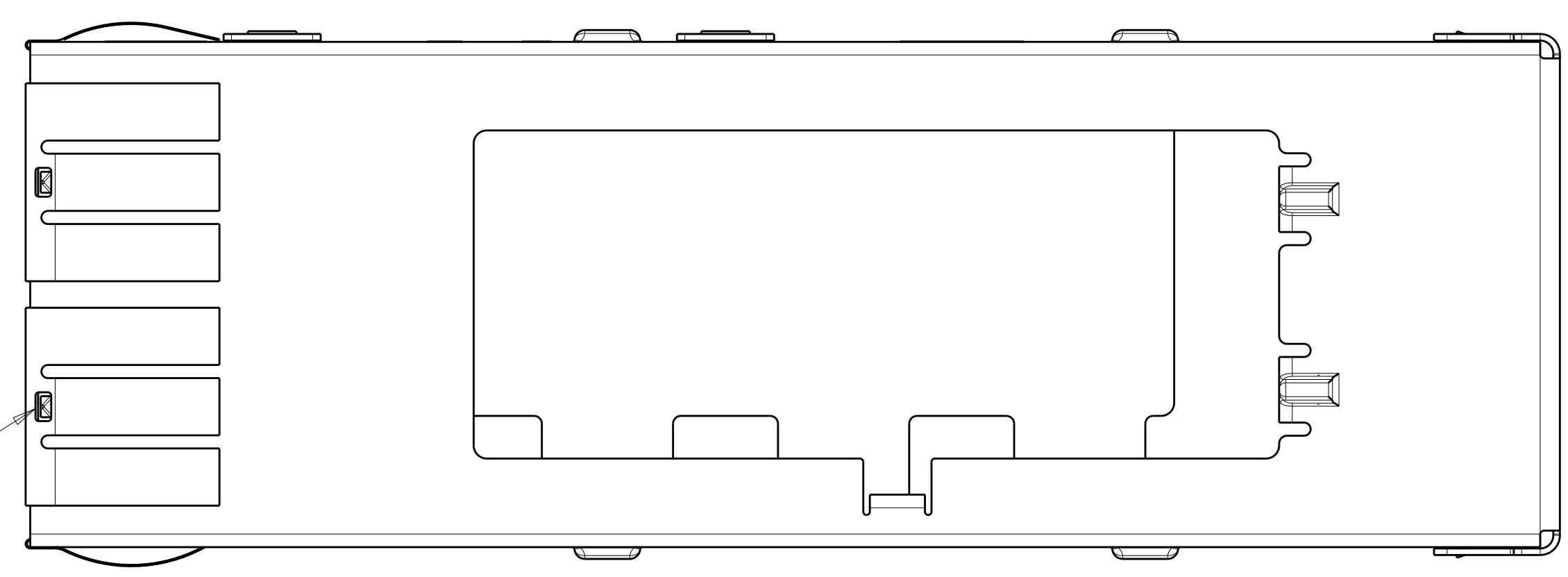


LOC	DIST	REVISIONS					
		P	LTN	DESCRIPTION	DATE	DMN	APVD
GP	00	B1		REVISED PER ECO-11-004835	11MAR2011	RK	HMR
		C		REVISED PER ECO-11-016845	18AUG2011	KS	MO.W
		D		REVISED PER ECO-15-005721	4AUG2015	RG	SH

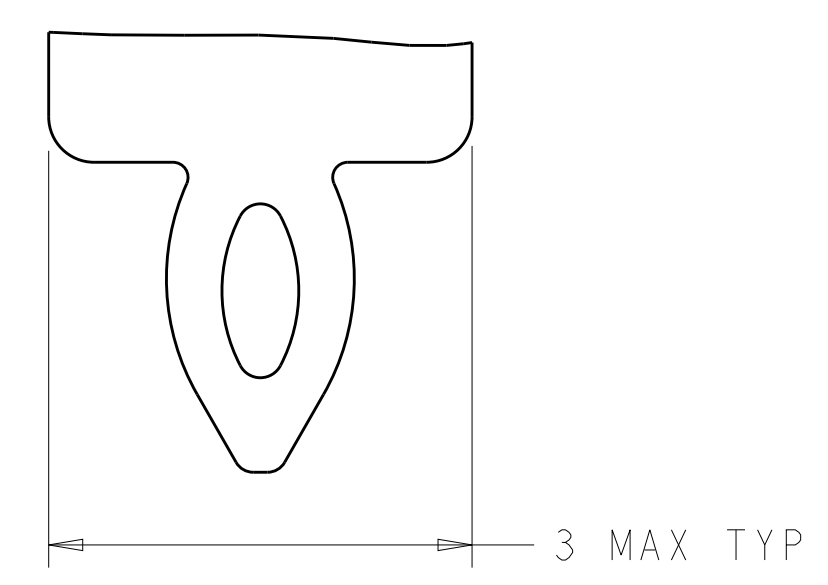
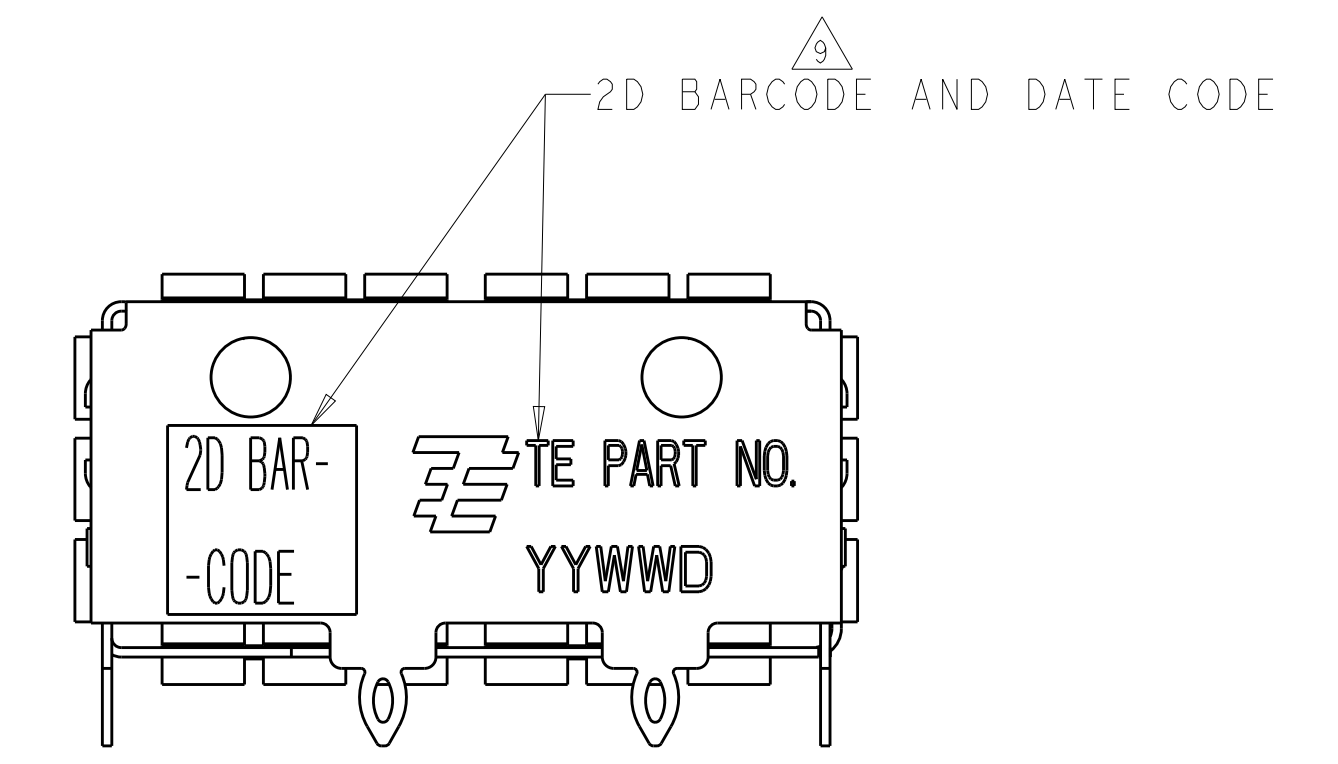
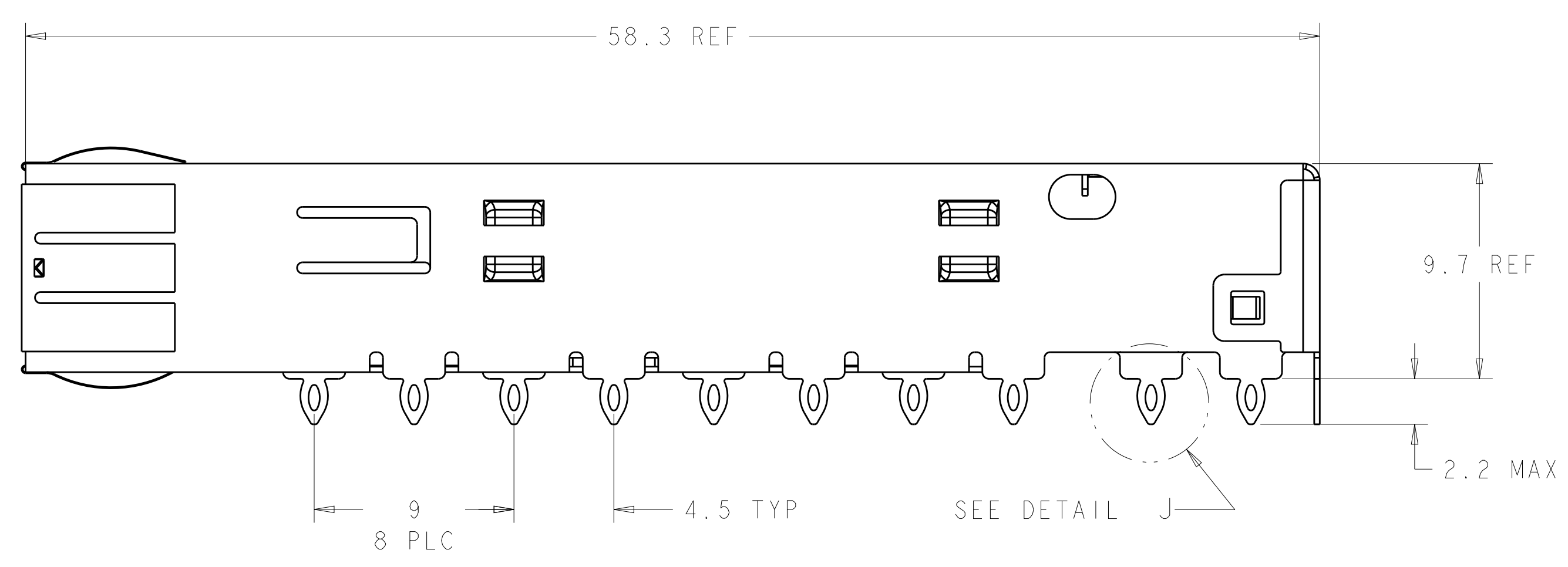
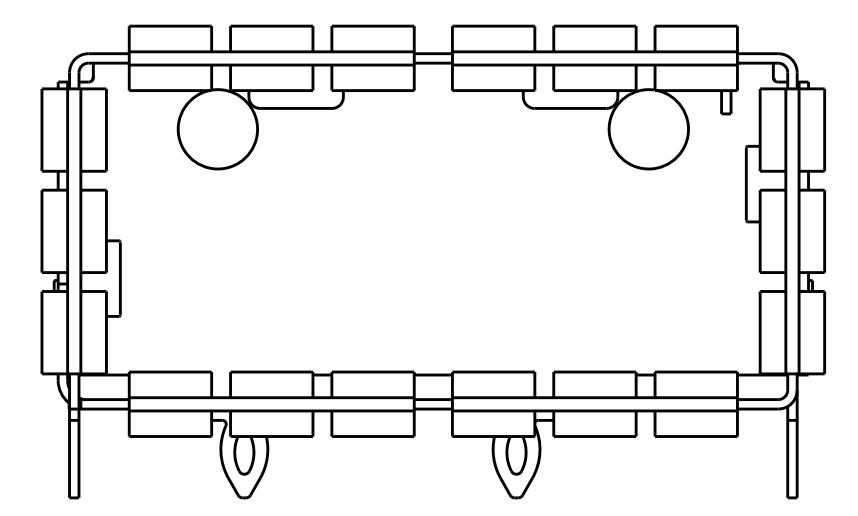


ISOMETRIC VIEW  
SCALE 4:1

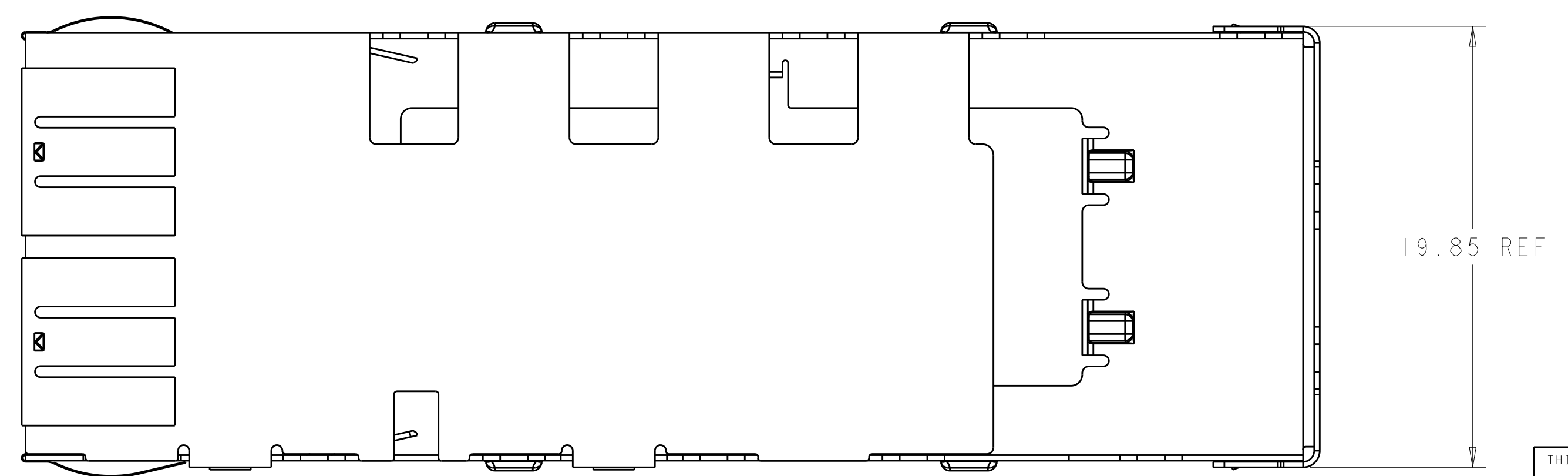
Sn42Bi58 SOLDER  
6 PLACES



- ⚠ CAGE MATERIAL: 0.25 THICK NICKEL SILVER.  
SPRING MATERIAL: COPPER ALLOY
- ⚠ MINIMUM PITCH DIMENSION.
- 3. MATES WITH QSFP MSA COMPATIBLE TRANSCEIVER.
- ⚠ REFERENCE APPLICATION SPEC 114-13217 FOR RECOMMENDED DRILL HOLE DIAMETER AND PLATING THICKNESS.
- ⚠ DATUM AND BASIC DIMENSIONS ESTABLISHED BY CUSTOMERS.
- 6. MINIMUM PC BOARD THICKNESS:  
SINGLES SIDED: 1.45  
DOUBLE SIDED: 2.2.
- ⚠ DATUM -A- IS TOP SURFACE OF THE HOST BOARD.
- ⚠ SURFACE TRACES PERMITTED WITHIN THIS AREA EXCEPT WHERE CAGE STANDOFFS, SHOWN IN DETAIL J, CONTACT PC BOARD.
- ⚠ 2D BARCODE AND DATE CODE (YYWW) MARKED APPROXIMATELY AS SHOWN.
- ⚠ SPRING FINISH: 0.8µm MIN TIN OVER 0.8µm MIN NICKEL, NON-PLATED EDGES PERMISSIBLE.
- 11. PRODUCT HAS NOT COMPLETED QUALIFICATION TESTING.



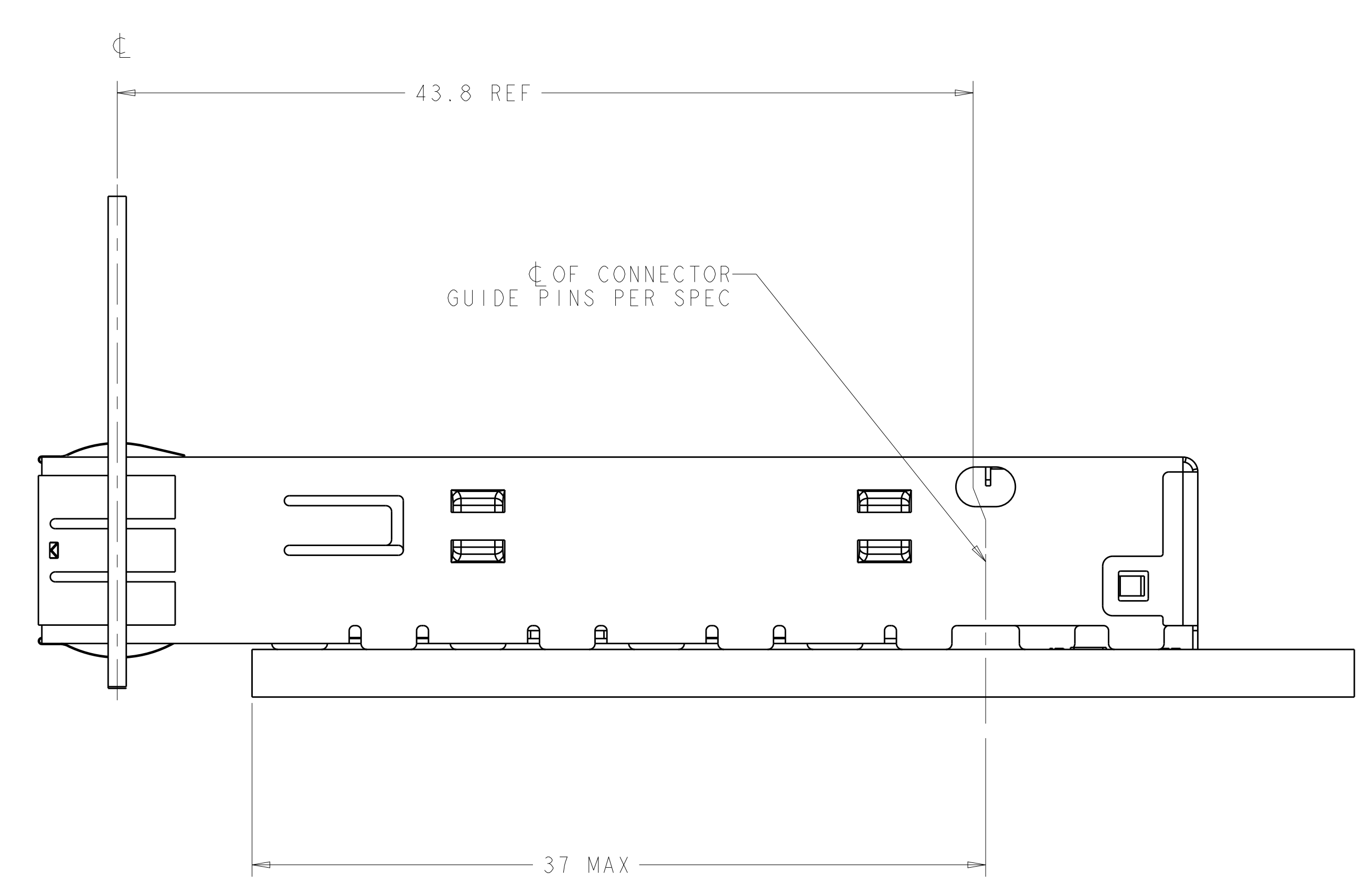
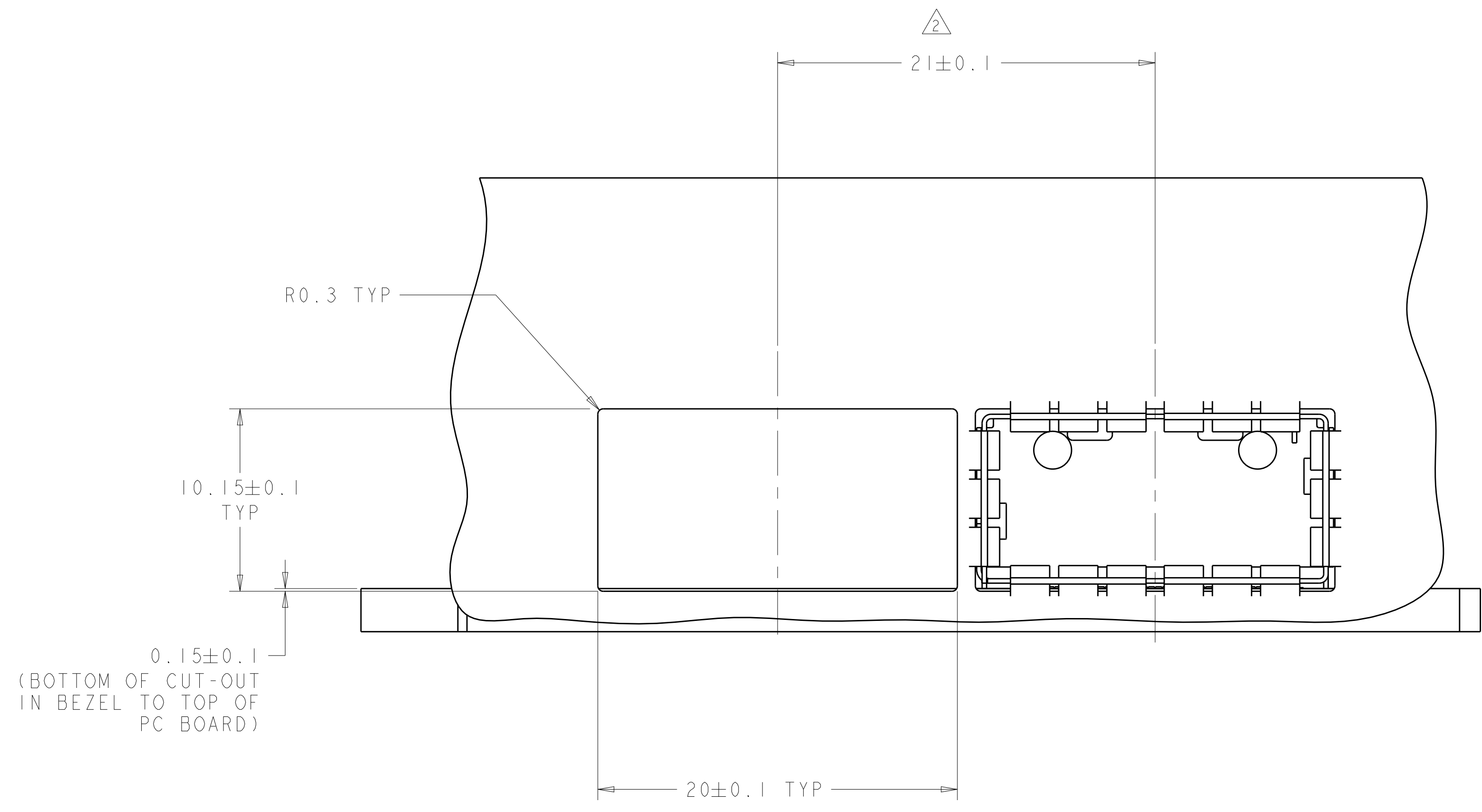
DETAIL J  
SCALE 20:1



1888617-1  
PART NUMBER

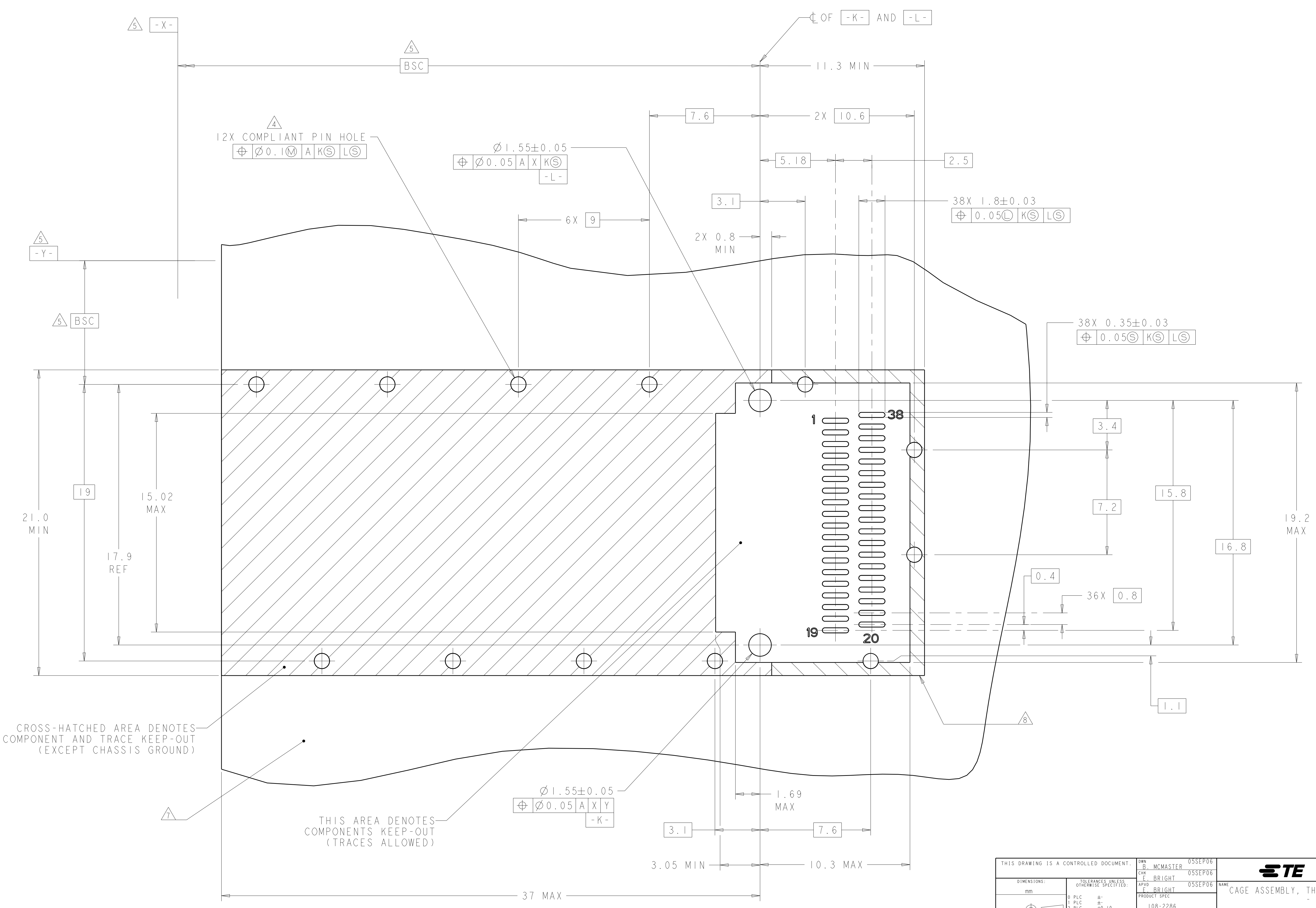
THIS DRAWING IS A CONTROLLED DOCUMENT.		DMN: B. MCMASTER 05SEP06	TE Connectivity NAME: CAGE ASSEMBLY, THRU BEZEL, QSFP PRODUCT SPEC: 108-2286 APPLICATION SPEC: 114-13217 SIZE: A100779 CAGE CODE: C=1888617 DRAWING NO: 1888617-1 RESTRICTED TO: -
DIMENSIONS:		CHK: E. BRIGHT 05SEP06	
TOLERANCES UNLESS OTHERWISE SPECIFIED:		APVD: E. BRIGHT 05SEP06	
mm		0 PLC ±	
1 PLC ±0.10		2 PLC ±	SCALE: 5:1
3 PLC ±		3 PLC ±	SHEET: 1 OF 3
4 PLC ±		4 PLC ±	REV: D
ANGLES ±		FINISH: 10	
MATERIAL: ⚠		WEIGHT: -	
CUSTOMER DRAWING			

LOC	DIST	REVISIONS					
GP	00	P	LTN	DESCRIPTION	DATE	DMN	APVD
-	-	-	-	SEE SHEET 1	-	-	-



THIS DRAWING IS A CONTROLLED DOCUMENT.		DMN B. MCMASTER	05SEP06	<b>STE</b> TE Connectivity
DIMENSIONS:		CHK E. BRIGHT	05SEP06	
mm	TOLERANCES UNLESS OTHERWISE SPECIFIED:	APVD E. BRIGHT	05SEP06	NAME CAGE ASSEMBLY, THRU BEZEL, QSFP
0 PLC	±	PRODUCT SPEC		SIZE -
2 PLC	±0.10	APPLICATION SPEC		CAGE CODE -
3 PLC	±	114-13217		DRAWING NO A100779
4 PLC	±	WEIGHT		DRAWING NO C=1888617
ANGLES	±	CUSTOMER DRAWING		RESTRICTED TO -
MATERIAL	FINISH	SCALE 5:1		SHEET 2 OF 3
		REV D		

LOC		DIST		REVISIONS				
GP	00	P	LTH	DESCRIPTION	DATE	DWN	APVD	
-	-	-	-	SEE SHEET 1	-	-	-	



CROSS-HATCHED AREA DENOTES COMPONENT AND TRACE KEEP-OUT (EXCEPT CHASSIS GROUND)

THIS AREA DENOTES COMPONENTS KEEP-OUT (TRACES ALLOWED)

RECOMMENDED PC BOARD LAYOUT  
 SCALE 8:1

THIS DRAWING IS A CONTROLLED DOCUMENT.		DWN: B. MCMASTER 05SEP06	<b>STE</b> TE Connectivity
DIMENSIONS: mm		CHK: E. BRIGHT 05SEP06	
TOLERANCES UNLESS OTHERWISE SPECIFIED:		APVD: E. BRIGHT 05SEP06	NAME: CAGE ASSEMBLY, THRU BEZEL, QSFP
0 PLC	±	PRODUCT SPEC	SIZE: CAGE CODE DRAWING NO
1 PLC	±0.10	108-2286	RESTRICTED TO
2 PLC	±	APPLICATION SPEC	A100779C=1888617
3 PLC	±	114-13217	SCALE: 5:1 SHEET 3 OF 3 REV D
4 PLC	±	WEIGHT	
ANGLES	±	CUSTOMER DRAWING	

单击下面可查看定价，库存，交付和生命周期等信息

[>>TE Connectivity\(泰科\)](#)