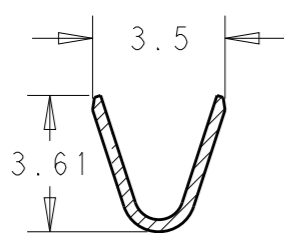
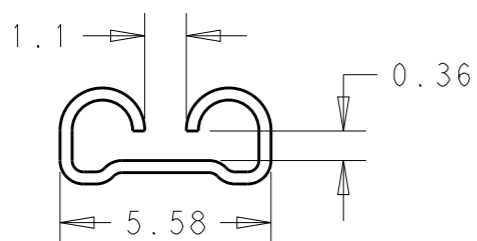
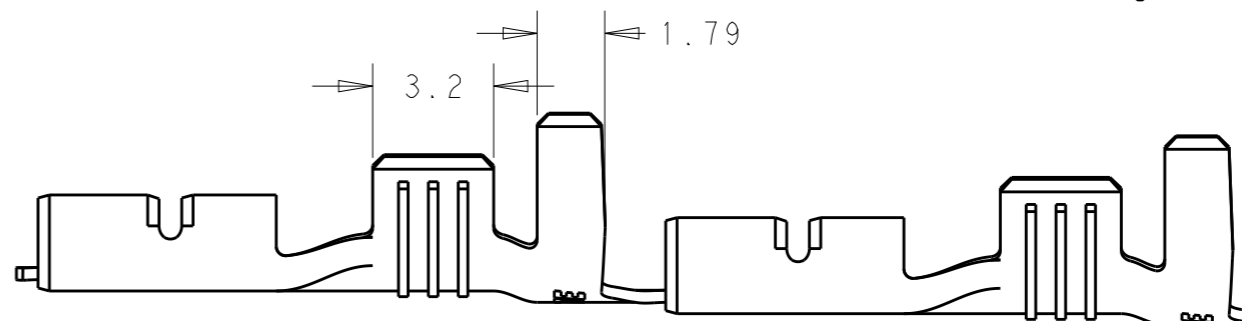
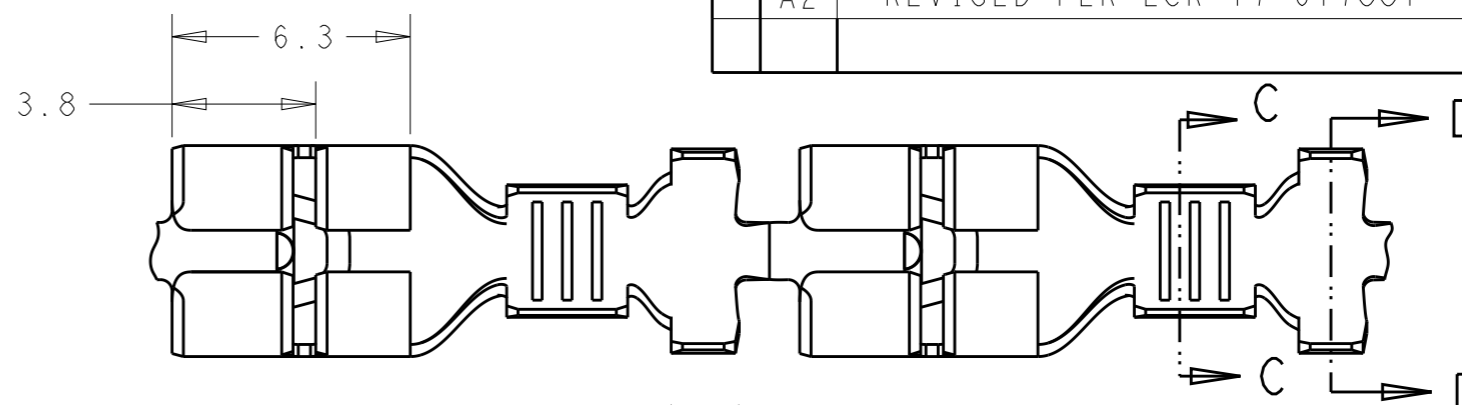
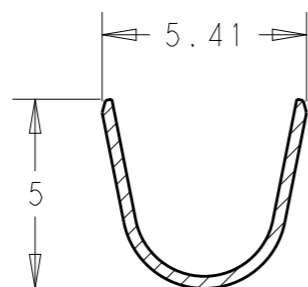


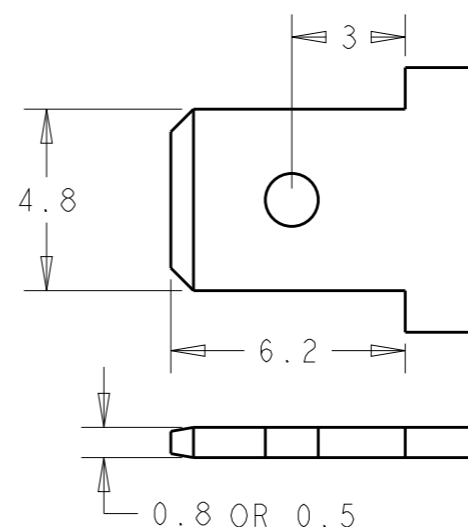
P	LTR	DESCRIPTION	DATE	DWN	APVD
	A2	REVISED PER ECR-17-017881	25DEC2017	HG	TD



SECTION C-C




SECTION D-D



RECOMMENDED MATING TAB DIMENSION

- 1) CONTINUOUS STRIP ON REELS.
- 2) WIRE SIZE IS 1.0mm<sup>2</sup> - 2.5mm<sup>2</sup>.
- 3) INSULATION RANGE 3.0-4.3
- 4) MATING TAB THK 0.50+0.04/- 0.03 or 0.80+0.04/- 0.03.
- 5) APPLICATION REMARK: THIS TERMINAL CAN BE USED ON COUNTERPART TABS HAVING THICKNESS 0.5mm AND 0.8mm IT IS NOT ALLOWED TO MATE WITH 0.5mm TAB AFTER MATE WITH THE 0.8mm TAB.

TIN PLATED	BRASS	2293895-1
FINISH	MATERIAL	PART NO

THIS DRAWING IS A CONTROLLED DOCUMENT.		DWN 09SEP2015 JASON JIANG	 TE Connectivity	
DIMENSIONS: mm		CHK TIM DING		
TOLERANCES UNLESS OTHERWISE SPECIFIED:		APVD TIM DING	PRODUCT SPEC 108-106242	
0 PLC ±0.5		PRODUCT SPEC	APPLICATION SPEC 114-106242	
1 PLC ±0.2		WEIGHT	-	
2 PLC ±0.10		SIZE	A3	
3 PLC ±0.05		CAGE CODE	-	
4 PLC ±0.000J		DRAWING NO	C-2293895	
ANGLES ±2		RESTRICTED TO	-	
FINISH		Customer Drawing		
MATERIAL SEE TABLE		SCALE	N/A	
-		SHEET	1 OF 1	
-		REV	A2	

单击下面可查看定价，库存，交付和生命周期等信息

[>>TE Connectivity\(泰科\)](#)