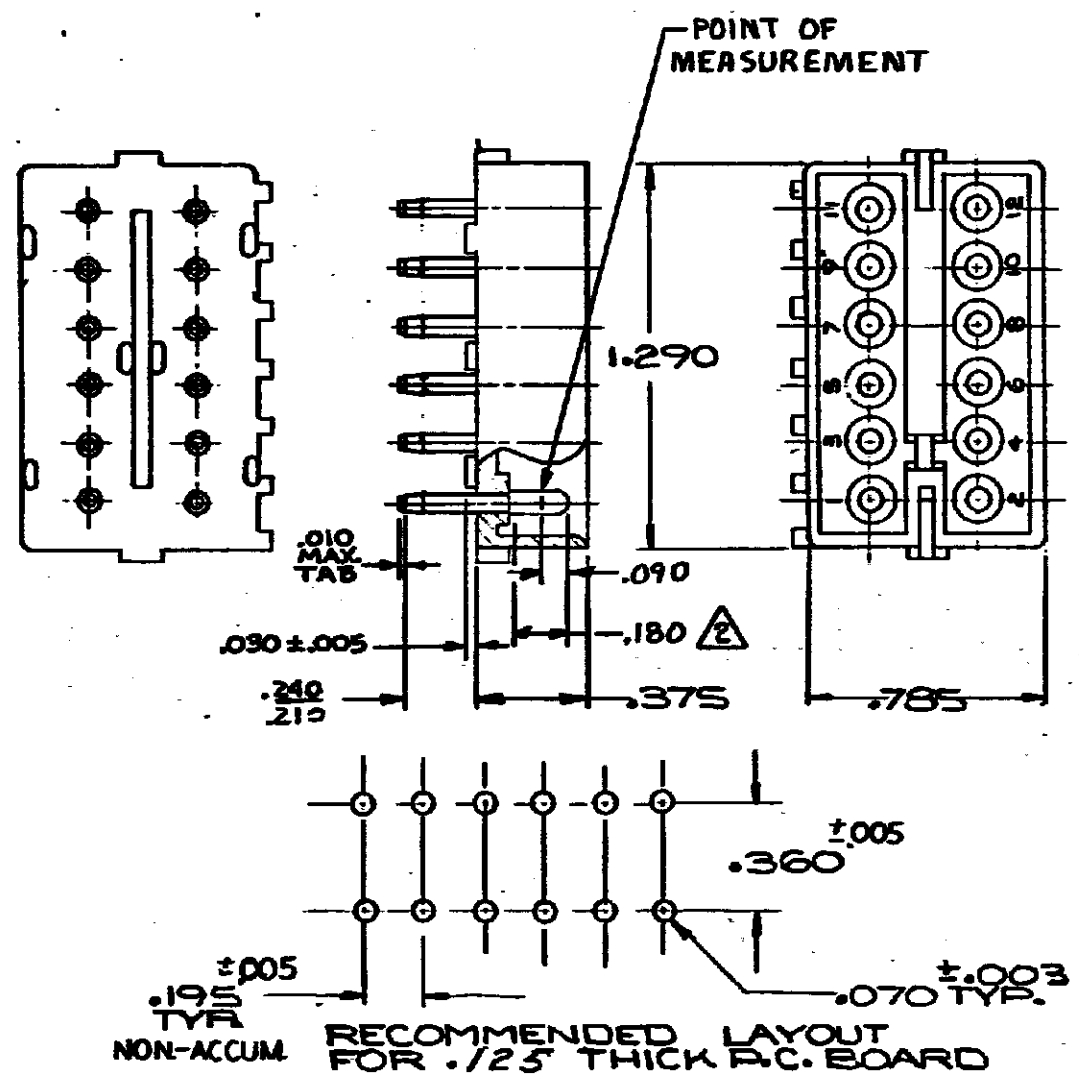


DRAWING MADE IN AMERICAN PROJECTION



1. PARTS COMPLY WITH AMP SOLDERABILITY SPEC. NO. 109-11-3  
 CONTACT IS PLATED OVERALL WITH .000050 NICKEL, THEN .000030 GOLD OVER CONTACT LENGTH INDICATED AND MATTE TIN ON SOLDER TAIL END.

OBSOLETE

ASSEMBLY NO.	HSG. MATL.	COLOR	FIN MATL.	FINISH
<del>350220-2</del>	NYLON	NATURAL	COPPER ALLOY	GOLD/△
350220-1	NYLON - NATURAL		COPPER ALLOY - PRE-TIN	

DRAWING IN INCHES, DO NOT SCALE PRINT.

M1	REVISED PER ECR-15-006702	NO.	29	DATE	29 JUL 2013
LTR	REVISION RECORD	DOWN	APPROV		

DATE	NUMBER	NAME	REMARKS	ITEM NO.
6-27-73	9. Echner			
MATERIAL AND FINISH		SEE TABLE		
WIRE - RANGE - INSULATION		TYPE		
TOLERANCE EXCEPT AS NOTED		SCALE	LOC	REV
2.015 ±.010		CM	B	350220
NAME: 12 CIRCUIT MATE-N-LOK P.C. BOARD PIN HEADER				

AMP 1223 REV 11/63

单击下面可查看定价，库存，交付和生命周期等信息

[>>TE Connectivity\(泰科\)](#)