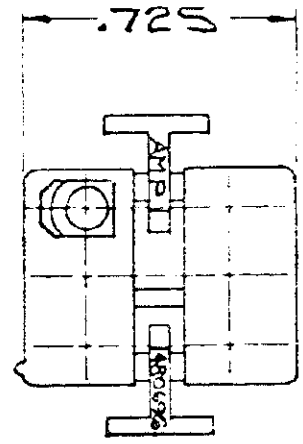
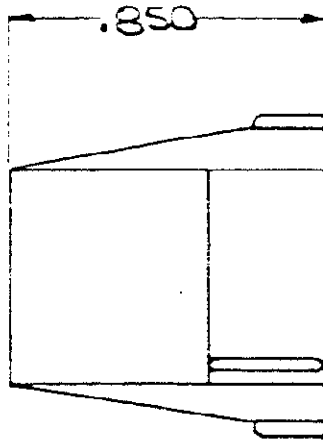
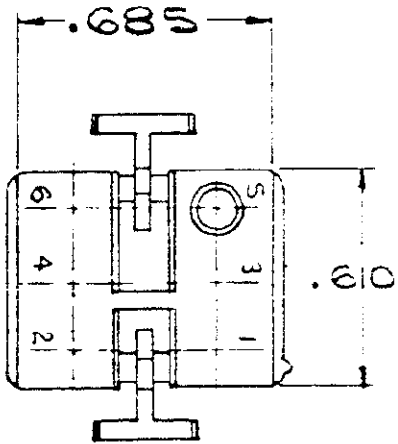


DRAWING MADE IN AMERICAN PROJECTION

102

NUMBER
480696

S



- 1. TO BE USED WITH DUAL LANCE MATE-N-LOK SOCKETS.
- 2 TO BE USED WITH CAP 480697.

HOUSING NO.	MATERIAL	COLOR
1-480696-0	NYLON	NATURAL

DIMENSIONS IN INCHES. DO NOT SCALE PRINT.

UNPUBLISHED COPY NOT TO BE REPRODUCED NOR PUBLISHED WITHOUT PERMISSION

© 1972 BY AMPERCO CORP. ALL RIGHTS RESERVED. AMP PRODUCTS COVERED BY PATENTS AND/OR PATENTS PENDING.				CUSTOMER COPY REFERENCE ONLY	
MATERIAL AND FINISH				AMP AMP INCORPORATED HARRISBURG, PENNA.	
B	OBSOLETE 1-1/1-9 PER CM-473	RS	7/2/85	CLASS .084 SOCKET HOUSING	
A ₁	RESTORED	RS	8-7-85	MOTOR MOUNT	
A	RELEASED	AMP 993	66/81 7/1/73	WIRE RANGE INSULATION TYPE	
LTR	REVISION RECORD	ECN	DR DATE	TOLERANCE EXCEPT AS NOTED = .015	SCALE 2-1
DR	DE	NAME 6 CIRCUIT MATE-N-LOK PLUG		LOC CM: A	NO 480696
CHK	APP	REV B		REV B	

单击下面可查看定价，库存，交付和生命周期等信息

[>>TE Connectivity\(泰科\)](#)