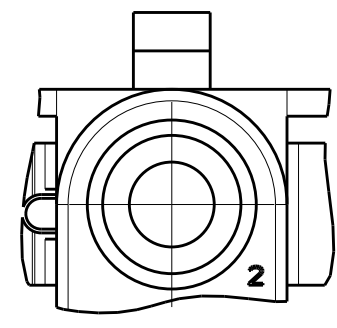
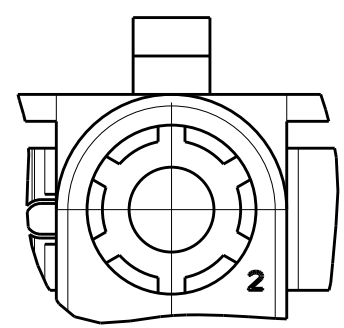


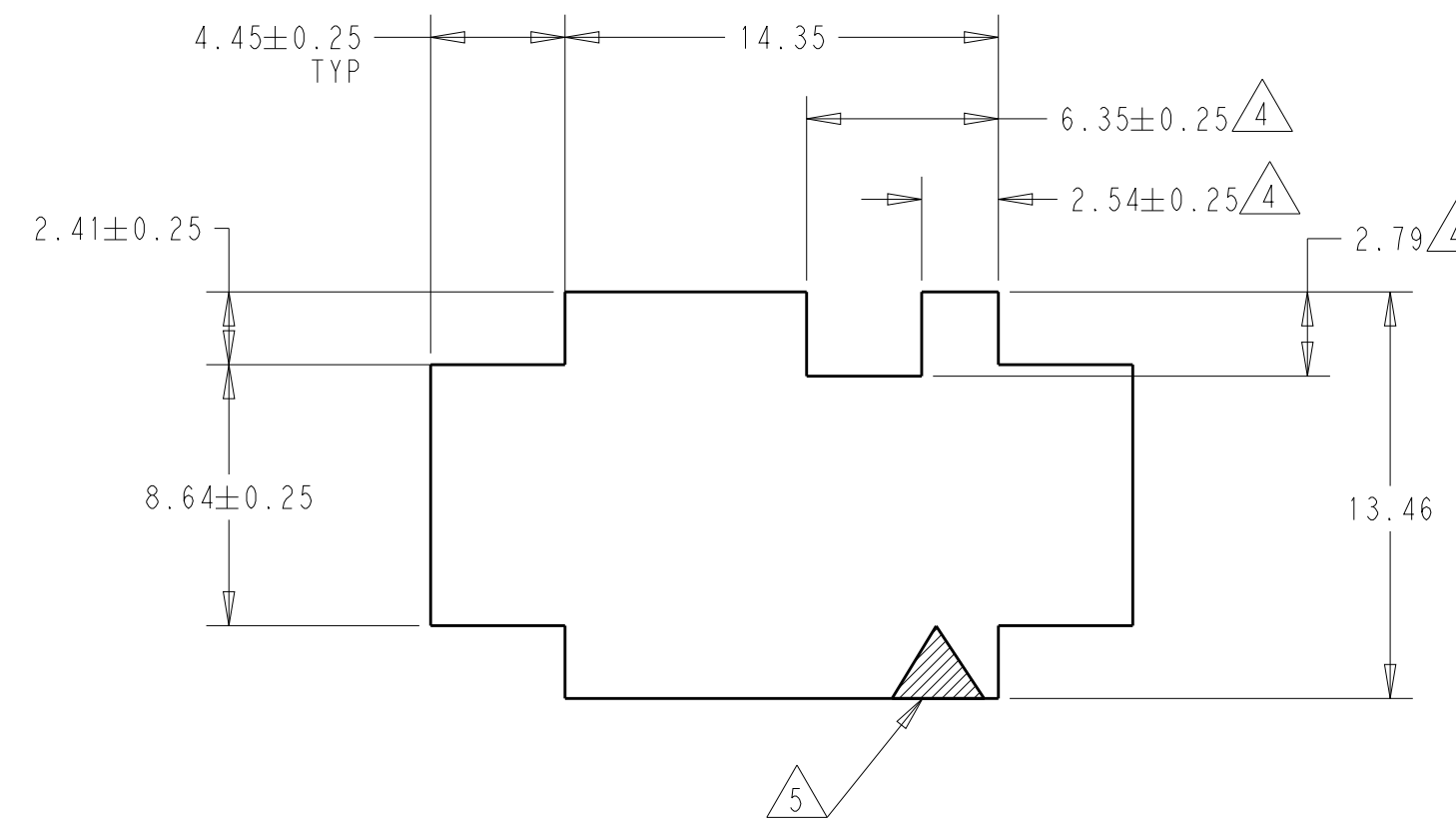
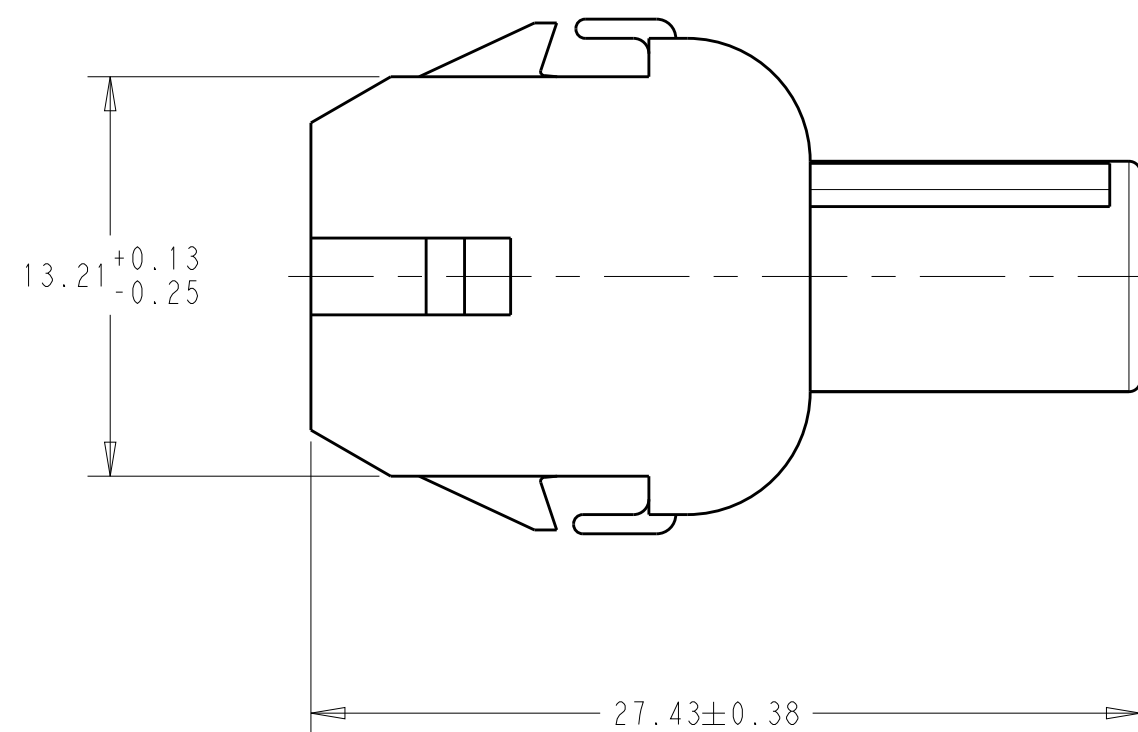
CONSTRUCTION OPTION 1



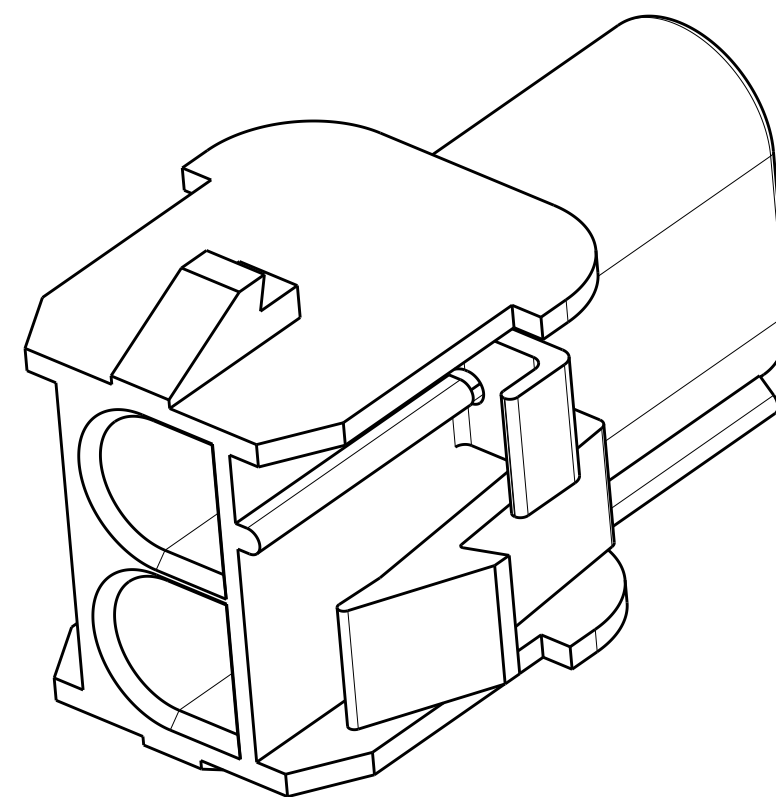
CONSTRUCTION OPTION 2

CONSTRUCTION OPTION 3

DETAIL A
OPTIONAL CONSTRUCTIONS



RECOMMENDED PANEL CUTOUT



REVISIONS				
P.	LTN	DESCRIPTION	DATE	APVD
AG9		REDRAWN PER ECO-19-005708	02MAY2019	BKW SF

- MATES WITH APPROPRIATE UNIVERSAL MATE-N-LOCK™ PLUG
- RECOMMENDED PANEL THICKNESS 0.76 - 2.29.
- PANEL MUST BE PUNCHED SO THAT THE HOUSING ENTERS THE PANEL IN THE SAME DIRECTION AS THE PUNCH.
- OPTIONAL FOR KEYING HOUSING IN PANEL.
- CIRCUIT NUMBER 1 LOCATION.
- DIMENSIONS SHOWN REPRESENT PRODUCT IN DRY, AS MOLDED, CONDITION. ADDITIONAL 2% GROWTH DUE TO SUBSEQUENT MOISTURE ABSORPTION MAY OCCUR AND SHOULD BE ACCOUNTED FOR.
- FOUR RIBS EQUALLY SPACED, NO SPECIFIC ORIENTATION. NO RIBS OR SIX RIBS EQUALLY SPACED, NO SPECIFIC ORIENTATION, OPTIONAL.
- UNDERWRITERS RECOGNIZED COMPONENT LOGO AND CSA CERTIFICATION LOGO TO BE LOCATED ONCE EACH ON SIDE OF HOUSING.
- OBSOLETE PARTS: OBSOLETE CIS STREAMLINING PER D.RENAUD/D.SINIS!
- CONSTRUCTION OPTION 1 ONLY ALLOWED
CONSTRUCTION OPTIONS 2 AND 3 NOT PERMISSIBLE
- PREPRODUCTION-FASR REQUIRED
- MATERIAL: PA66, UL94 V-0, GWIT 775°C
- TRADEMARK LOCATION: AMP OR TE

12	NATURAL	13-480699-0
10	NATURAL	2-480699-0
	BLACK	1-480699-9
	GRAY	1-480699-8
	BLUE	1-480699-6
	GREEN	1-480699-5
9	SUPERSEDED BY 1-480699-0	YELLOW
9	OBSOLETE	ORANGE
		RED
		BROWN
		NATURAL
		COLOR
		PART NUMBER

THIS DRAWING IS A CONTROLLED DOCUMENT.		DWN B. WEAVER 02MAY2019	TE Connectivity	
DIMENSIONS:		CHK S. FERNANDES 02MAY2019	NAME CAP, 2 CIRCUIT UNIVERSAL MATE-N-LOCK	
TOLERANCES UNLESS OTHERWISE SPECIFIED:		APVD T. BENCHOFF 02MAY2019	PRODUCT SPEC -	
mm			APPLICATION SPEC -	
			SIZE CAGE CODE DRAWING NO RESTRICTED TO	
0 PLC ±			A 00779 C=480699	
2 PLC ±0.13			SCALE 4:1 SHEET 1 OF 1 REV AG9	
3 PLC ±			CUSTOMER DRAWING	
4 PLC ±				
ANGLES ±1°				
MATERIAL NYLON UL94V-2				
FINISH -				

单击下面可查看定价，库存，交付和生命周期等信息

[>>TE Connectivity\(泰科\)](#)