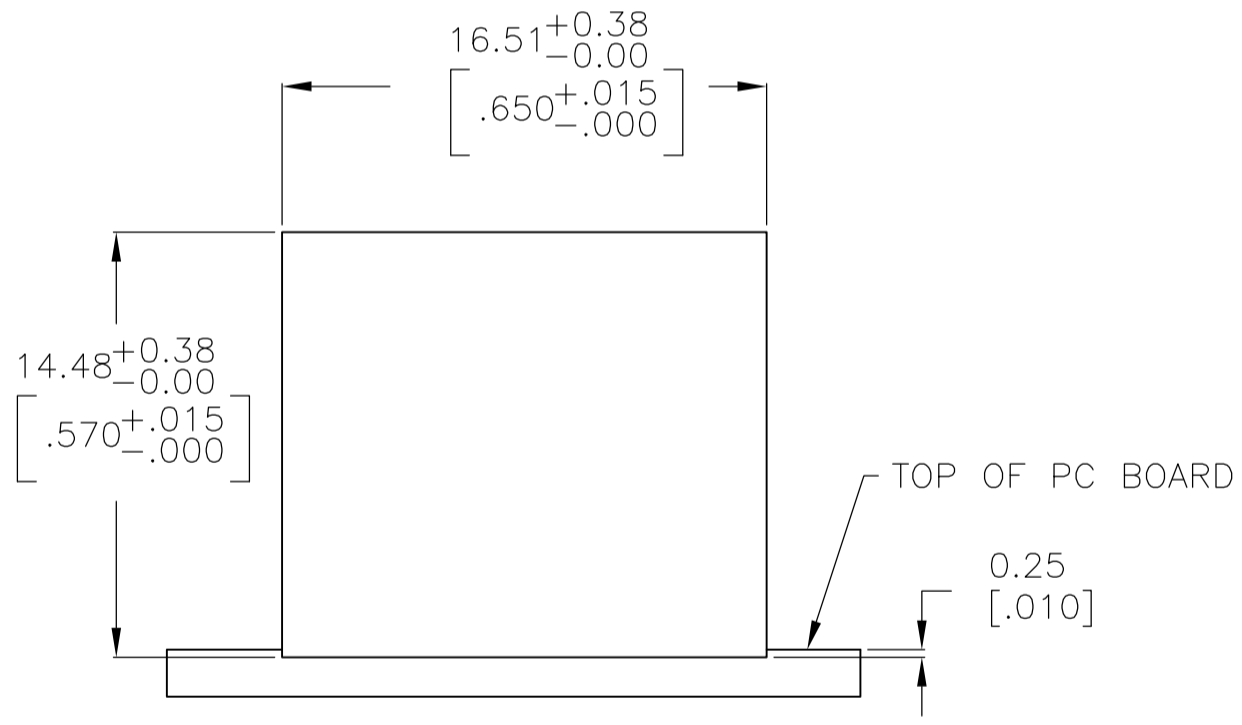
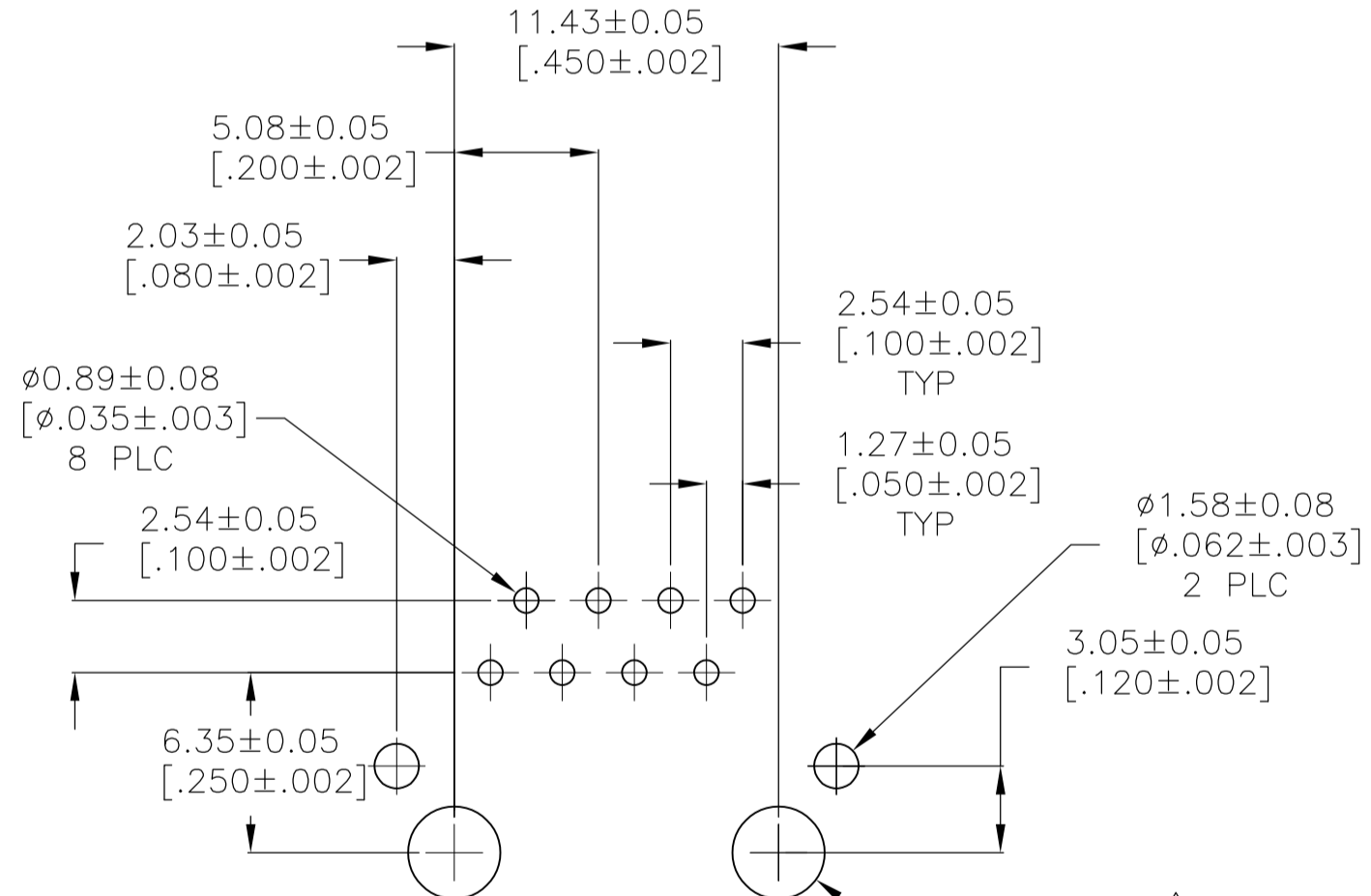
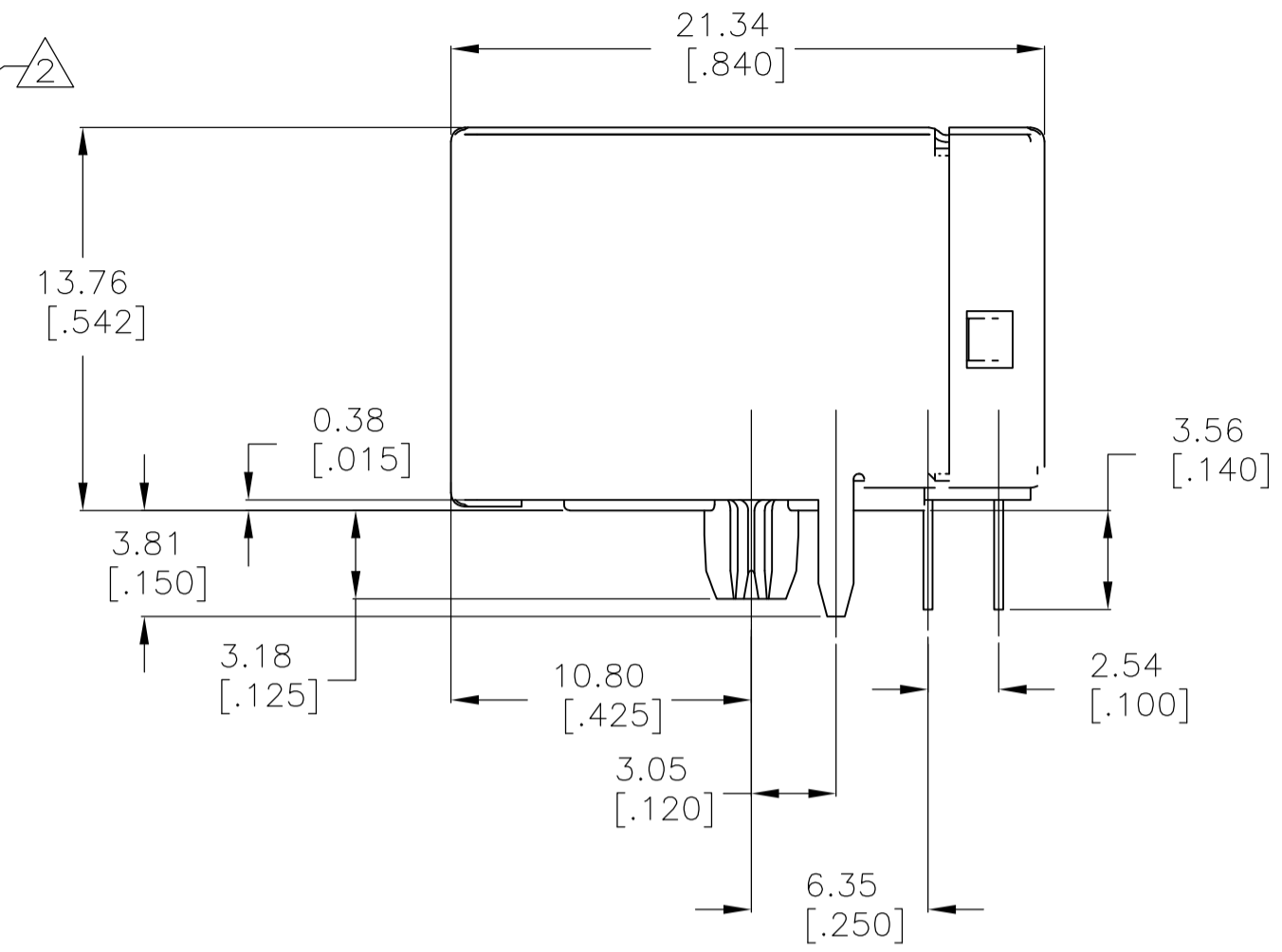
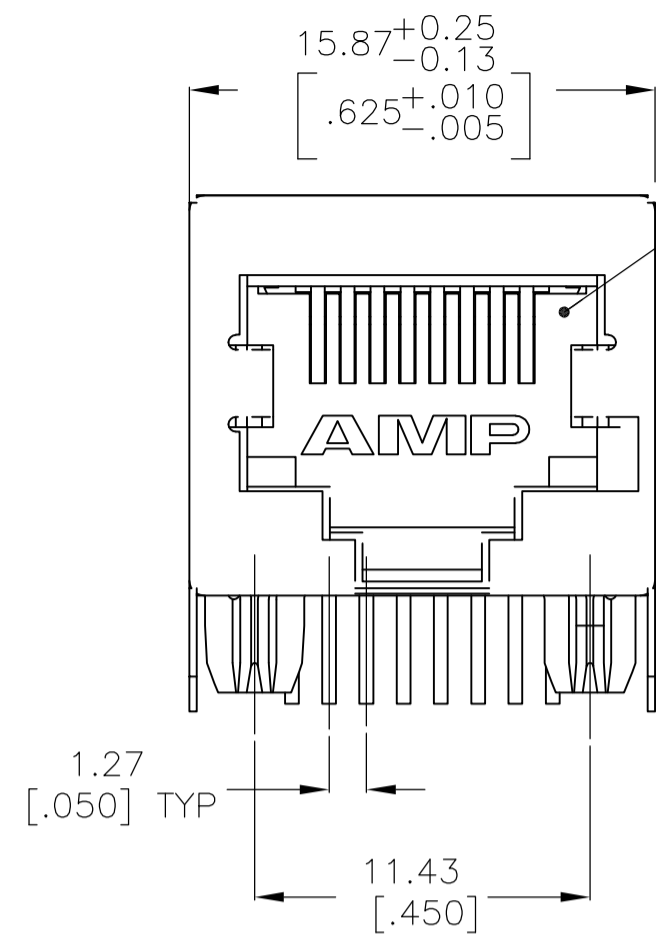


THIS DRAWING IS UNPUBLISHED. RELEASED FOR PUBLICATION
 © COPYRIGHT - By - ALL RIGHTS RESERVED.

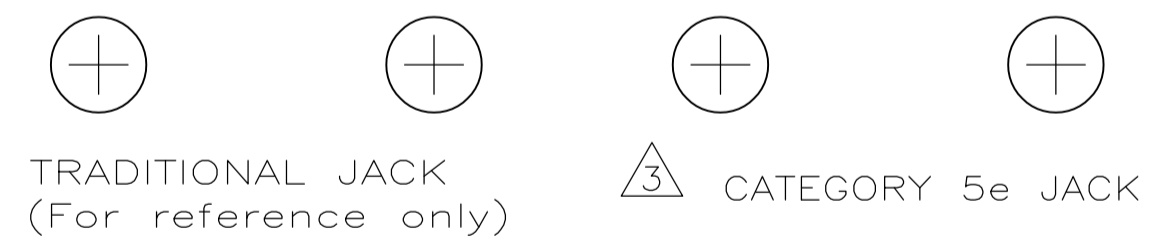
LOC	DIST	REVISIONS					
AA	00	P	LTR	DESCRIPTION	DATE	DWN	APVD
		D1		REVISED PER ECO-11-005033	26MAR11	RK	HMR
		E		ECO-11-019003	19SEP11	JJ	MQW
		F		ECO-13-009636	9JUN13	C.W.S.H	



SUGGESTED PANEL CUTOUT
SCALE 4:1

SUGGESTED PC BOARD LAYOUT
COMPONENT SIDE

- MATERIAL: HOUSING HTN, BLACK.
 TERMINALS - 0.33 mm (typical) THICK PHOS BRONZE PLATED WITH $1.27 \mu\text{m}$ (typical) MINIMUM THICK HARD GOLD IN LOCALIZED AREA AND $3.81 \mu\text{m}$ (typical) MINIMUM THICK MATTE TIN IN SOLDER AREA OVER $1.27 \mu\text{m}$ (typical) MINIMUM THICK NICKEL UNDERPLATE.
 SHIELDS - 0.254 mm (typical) THICK COPPER ALLOY PLATED WITH $1.27 \mu\text{m}$ (typical) MINIMUM NICKEL AND $2.03 \mu\text{m}$ (typical) MINIMUM HOT TIN DIP ON PCB GROUND TABS.
- JACK CAVITY CONFORMS TO FCC RULES AND REGULATIONS, PART 68 SUBPART F.
- CAUTION: CATEGORY 5 JACK SOLDER TAIL POSITIONS DO NOT FOLLOW SAME NUMBER SEQUENCE AS THAT OF TRADITIONAL JACKS.
- USE #30 DRILL BIT OR 3.25mm DRILL BIT WHEN PRODUCING THESE PCB HOLES.
- OBSOLETE PARTS: OBSOLETE CIS STREAMLINING PER D.RENAUD/D.SINISI
- SHIELD MATERIAL: PHOS BRONZE.



Color	Part Number
BLACK	5558342-3
GRAY	5558342-2
BLACK	5558342-1
HOUSING COLOR	PART NUMBER

THIS DRAWING IS A CONTROLLED DOCUMENT.		DWN T. PITTS/L.A.MAYER 01JUNE2005	TE Connectivity	
DIMENSIONS: mm		CHK J.WESTMAN 01JUNE2005	NAME	
TOLERANCES UNLESS OTHERWISE SPECIFIED: 0 PLC ± - 1 PLC ± - 2 PLC ± 0.25[.010] 3 PLC ± - 4 PLC ± - ANGLES ± - FINISH		APVD S.FLICKINGER 01JUNE2005	PRODUCT SPEC 108-1163-2	
MATERIAL SEE NOTE 1		APPLICATION SPEC 114-2048	SIZE A2	CAGE CODE 00779
SEE NOTE 1		WEIGHT -	DRAWING NO C=5558342	RESTRICTED TO -
CUSTOMER DRAWING		SCALE 4:1	SHEET 1 OF 1	REV F

单击下面可查看定价，库存，交付和生命周期等信息

[>>TE Connectivity\(泰科\)](#)