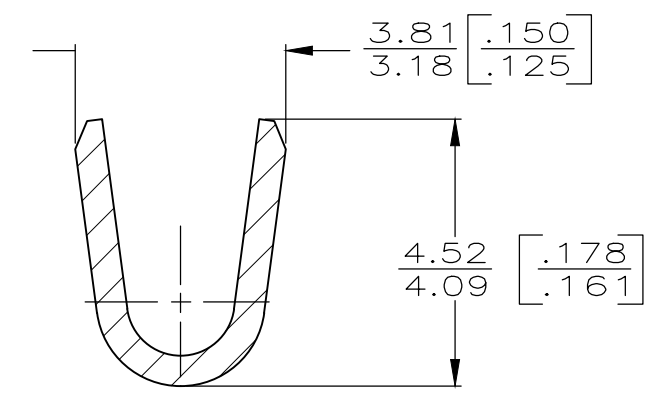
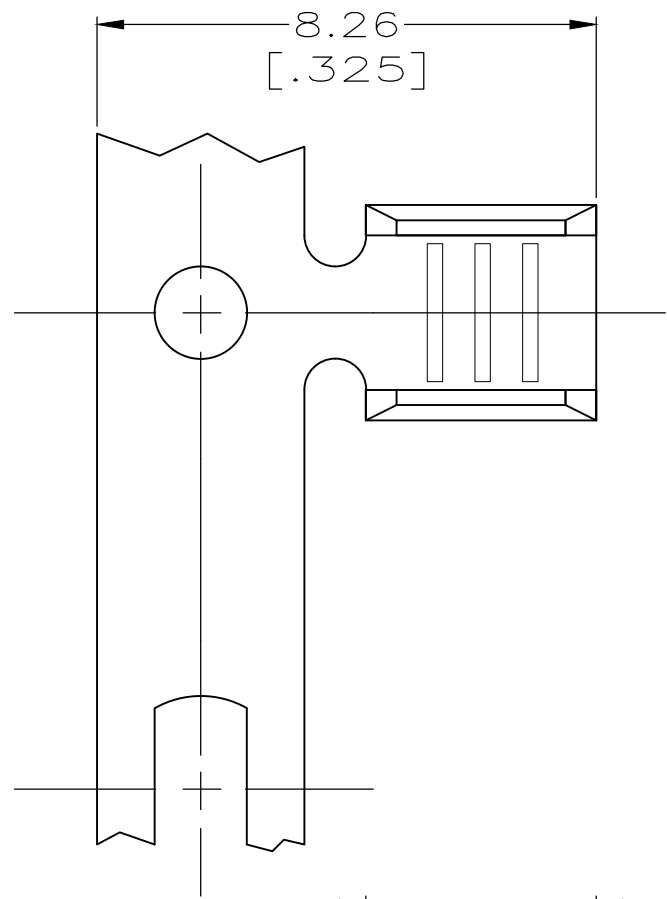
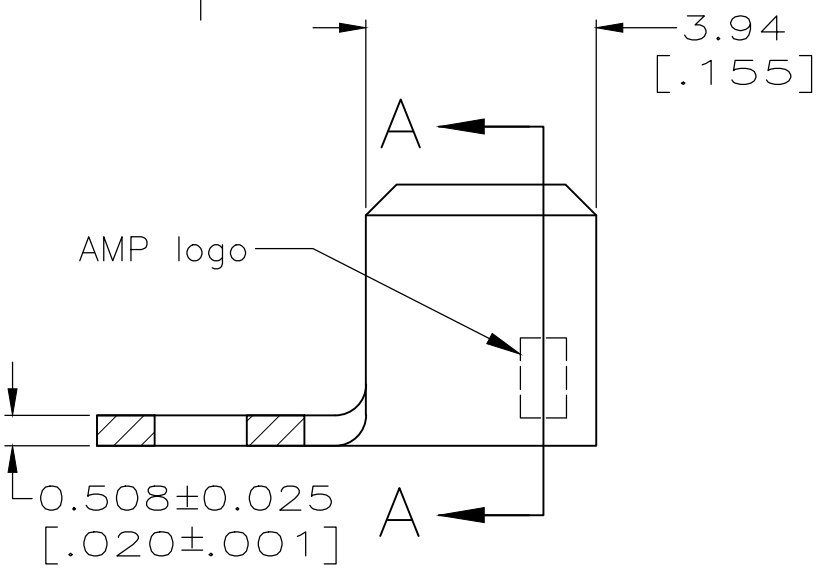


THIS DRAWING IS UNPUBLISHED. RELEASED FOR PUBLICATION  
 © COPYRIGHT - By - ALL RIGHTS RESERVED.

LOC	DIST	REVISIONS					
		P	LTR	DESCRIPTION	DATE	DWN	APVD
AF	50		L7	REVISED PER ECR-20-009967	20JUL20	DT	EW



SECTION A-A  
SCALE 10:1



- 1 PRODUCT PROVIDED IN STRIP FORM ON REELS, BREAKS MAY BE PRESENT.
- 3 CRIMP WIDTH, .110 F TYPE  
CRIMP HEIGHT (±.002) = ( TOTAL CMA + 11,300 ) / 176,700
- 4 PRELIMINARY - NOT FOR PRODUCTION.
- 5 WIRE RANGE FOR NEW APPLICATIONS: 1500-5000 CMA (WIRE RANGE APPROVED FOR APPLICATIONS IMPLEMENTED PRIOR TO 2005: 1970-4940 CMA).
- 6 OBSOLETE PARTS: OBSOLETE CIS STREAMLINING PER D.RENAUD/D.SINISI
- 7 CUSTOMER SPECIAL PACKAGING AND LABELING

MATERIAL	FINISH	REELING	WIRE RANGE	PART NUMBER
7 BRASS	TIN	REVERSE		63130-9
STEEL	NICKEL			4 63130-8
6 OBSOLETE COPPER-NICKEL	NONE			4 63130-7
PHOS BRONZE	TIN	STANDARD		5 63130-4
BRASS	NONE			3 63130-3
OBSOLETE				63130-2
				63130-1

THIS DRAWING IS A CONTROLLED DOCUMENT.

DWN	17/JAN/96	<b>STE</b> TE Connectivity	NAME	-
CHK	17/JAN/96			
PHILLIP M FORTNEY		PRODUCT SPEC	-	SPLICE
JEFF R RUTH				
APVD	17/JAN/96	APPLICATION SPEC	114-2088	RESTRICTED TO
DENNIS SCHWENK		SIZE	CAGE CODE	DRAWING NO
MATERIAL		SEE TABLE	FINISH	SEE TABLE
FINISH		SEE TABLE	WEIGHT	-
SEE TABLE		CUSTOMER DRAWING		SCALE 8:1
		A3 00779 C-63130		SHEET 1 OF 1
				REV L7

单击下面可查看定价，库存，交付和生命周期等信息

[>>TE Connectivity\(泰科\)](#)