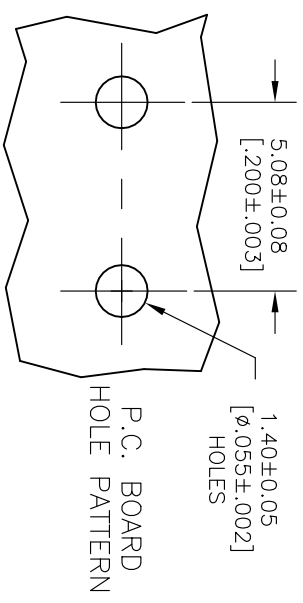
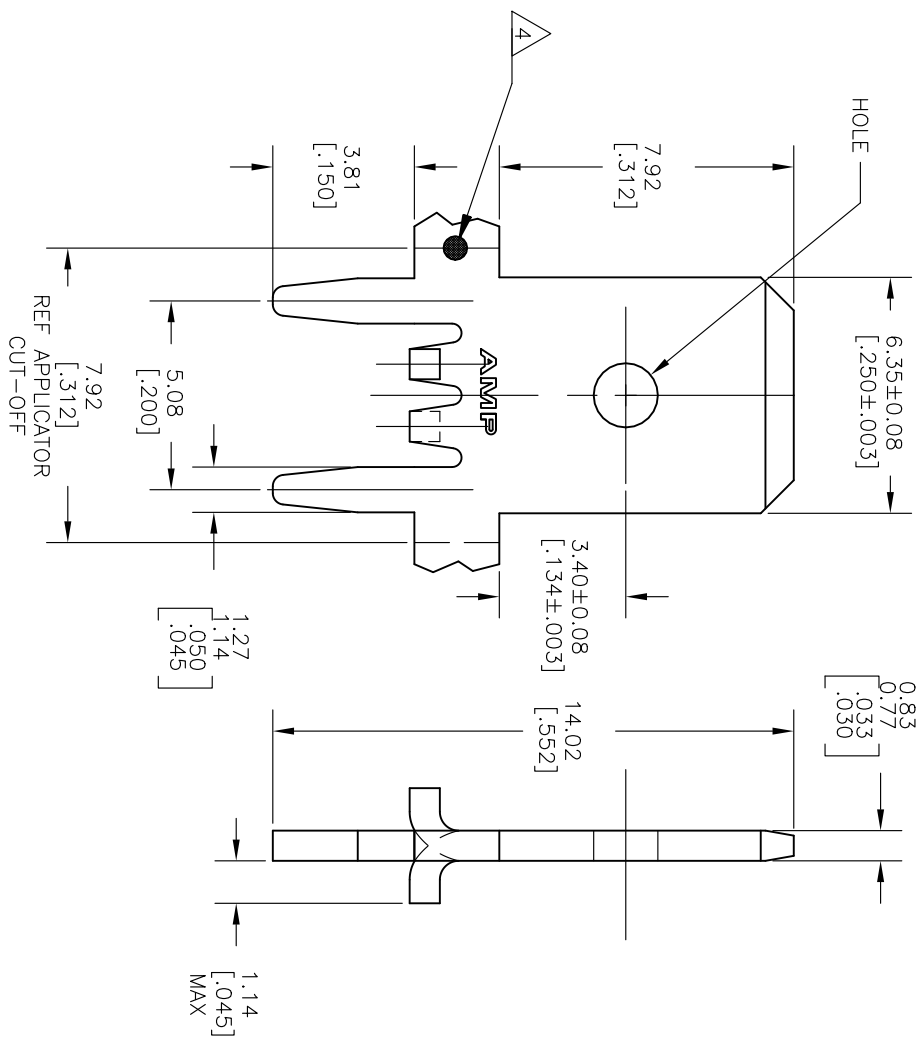


REVISIONS			
P	LR	DESCRIPTION	DATE
S		REVISED PER ECO--18-018731	30NOV2018
			RS
			LB



STANDARD	BRASS, SPECIAL HARD	63824-8
STANDARD	BRASS	63824-5
REVERSE	BRASS	63824-3
STANDARD	BRASS	63824-2
STANDARD	BRASS	63824-1
REELING	MATERIAL	PART NO.

- 1 CONTINUOUS STRIP ON REELS.
- 2 TIN PLATE 0.00381 [0.000150] MIN OVER 0.00254 [0.000100] MIN THK COPPER OR TIN PLATE 0.00381 [0.000150] MIN OVER 0.00127 [0.000050] MIN THK NICKEL.
- 3 REELED WITH INTERLEAVING PAPER
- 4 OPTIONAL ID MARK, LOCATED APPROX AS SHOWN.
- 5 PRELIMINARY - NOT FOR PRODUCTION
- 6 PREPRODUCTION - FASR REQUIRED

THIS DRAWING IS A CONTROLLED DOCUMENT.			
DIMENSIONS: INCHES	TOLERANCES UNLESS OTHERWISE SPECIFIED:	DRN	20FEB01
0 PLG ±	±	CHK	RUTH
1 PLG ±	±	APP'D	MS FEHER
2 PLG ±	± 0.25 [0.010]	PRODUCT SPEC	N DELBERT
3 PLG ±	±	APPLICATION SPEC	114-2115
4 PLG ±	±	WEIGHT	0.000000
FINISH		CUSTOMER DRAWING	
		SIZE	A3
		CAGE CODE	00779
		DRAWING NO	63824
		SCALE	8:1
		SHEET	1 of 1
		REV	S
		RESTRICTED TO	



单击下面可查看定价，库存，交付和生命周期等信息

[>>TE Connectivity\(泰科\)](#)