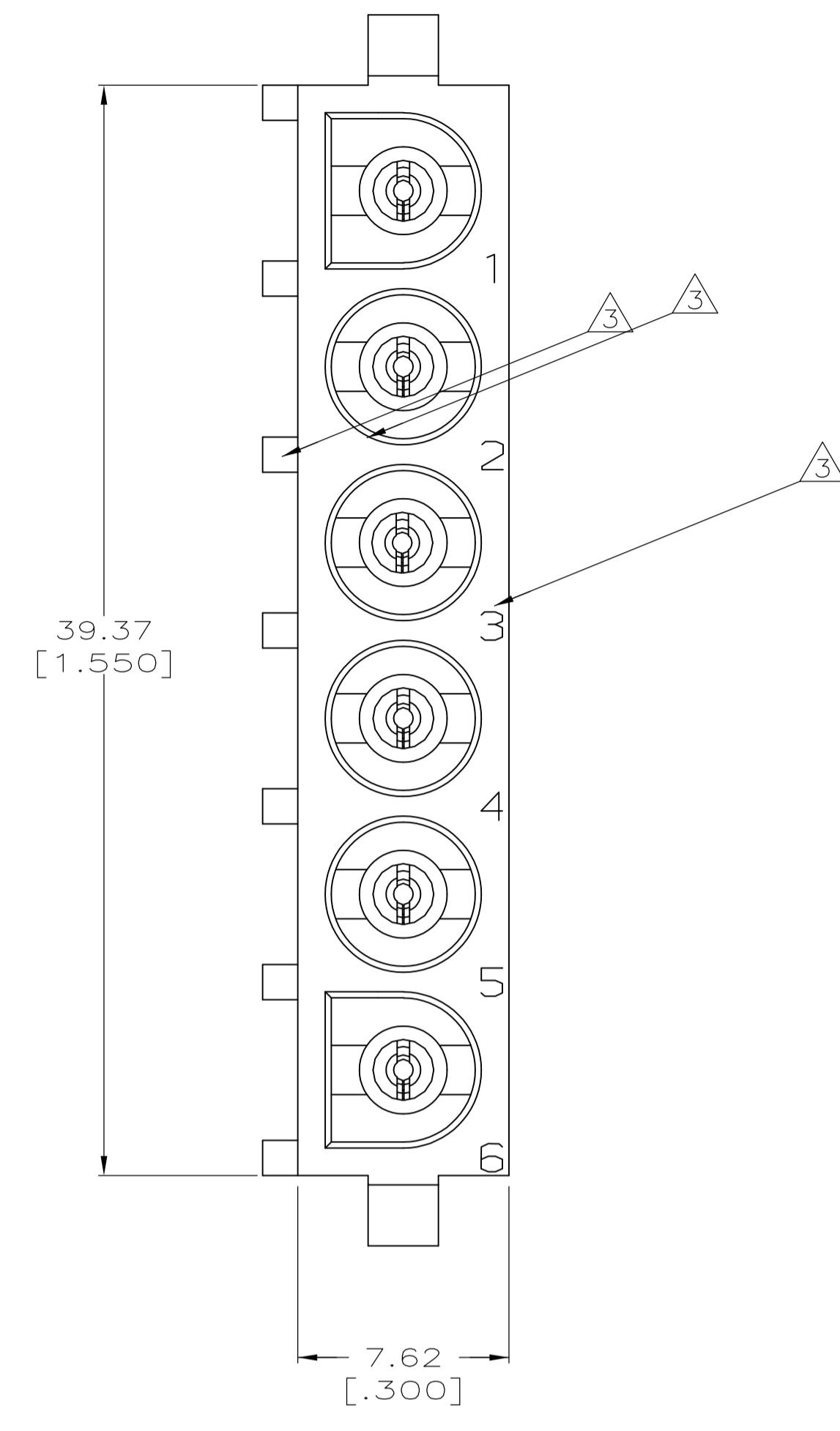
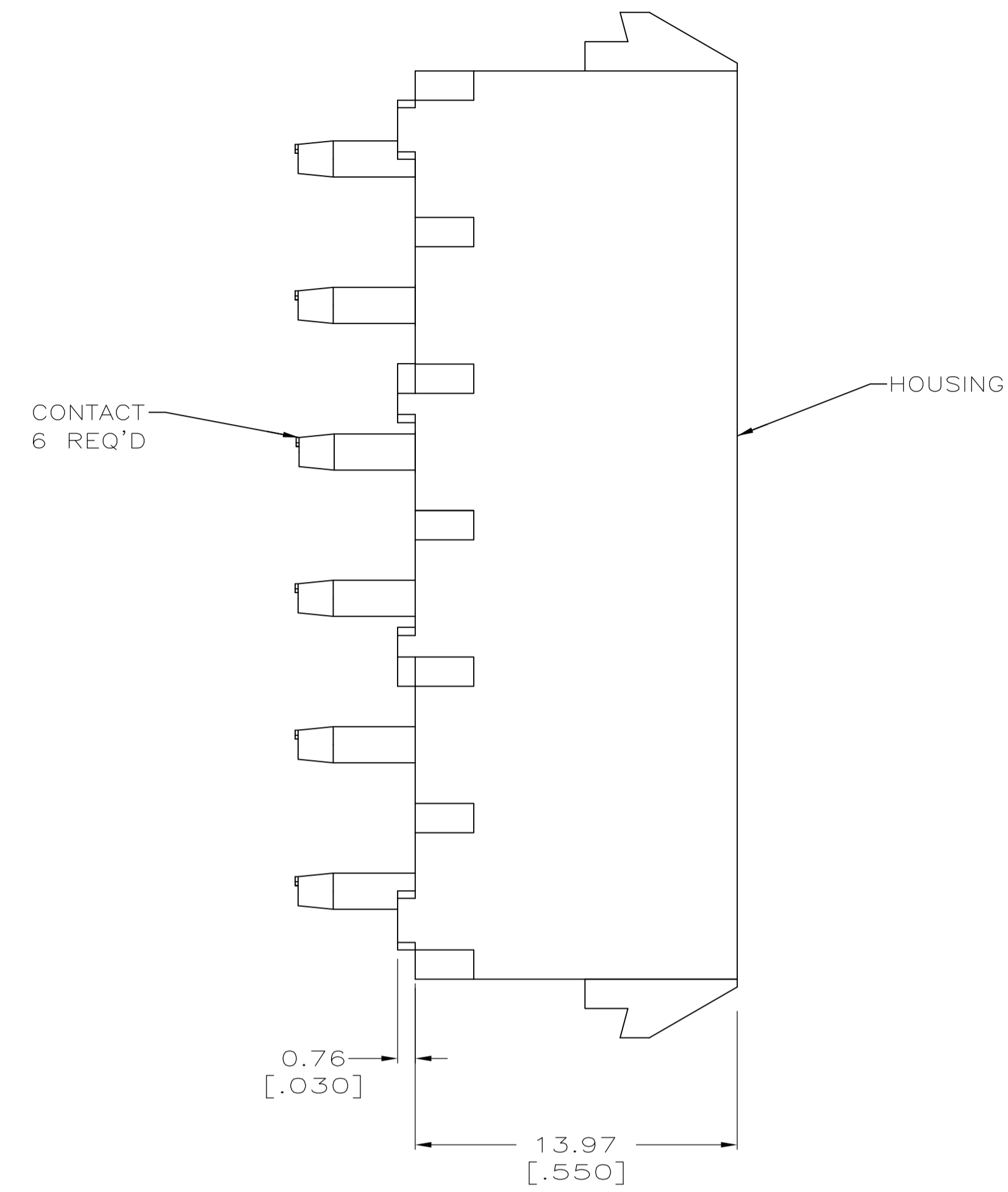
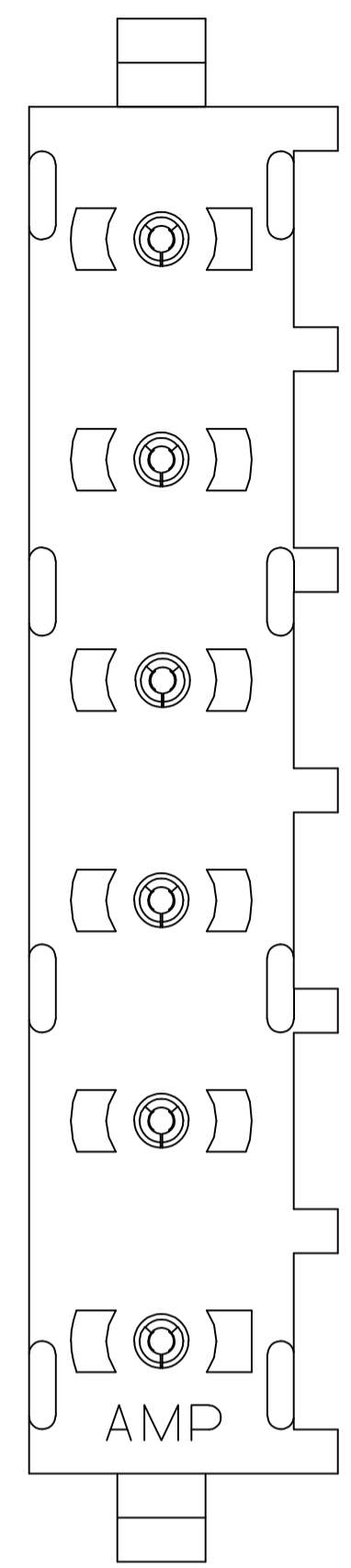
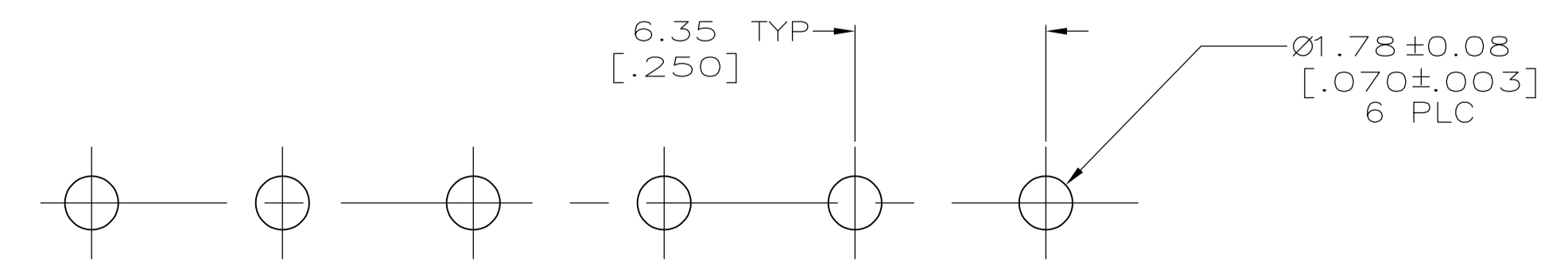
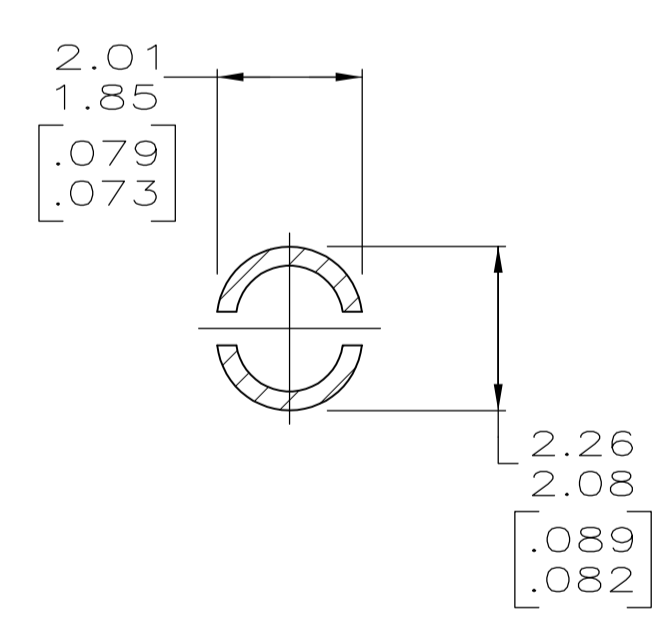
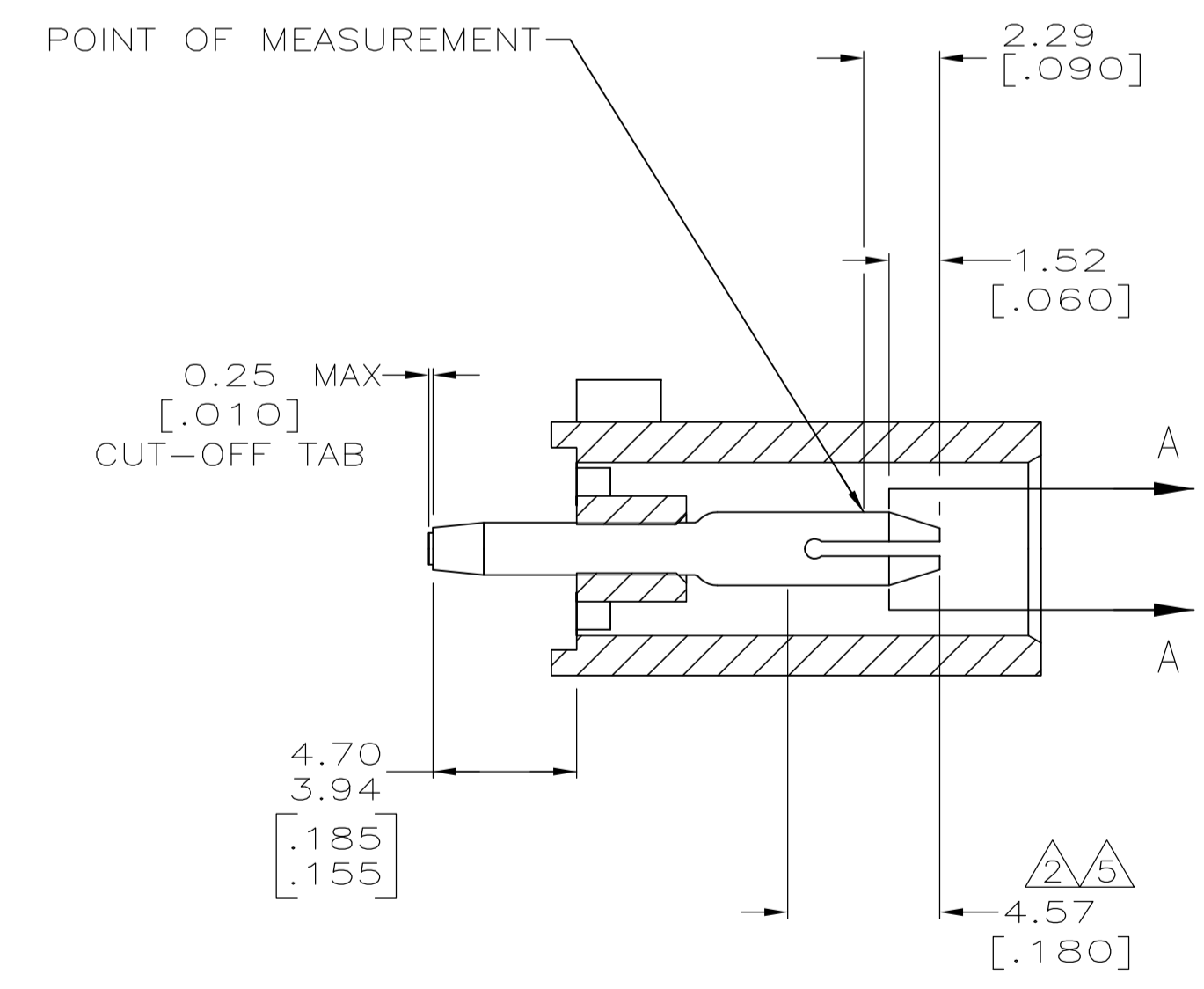
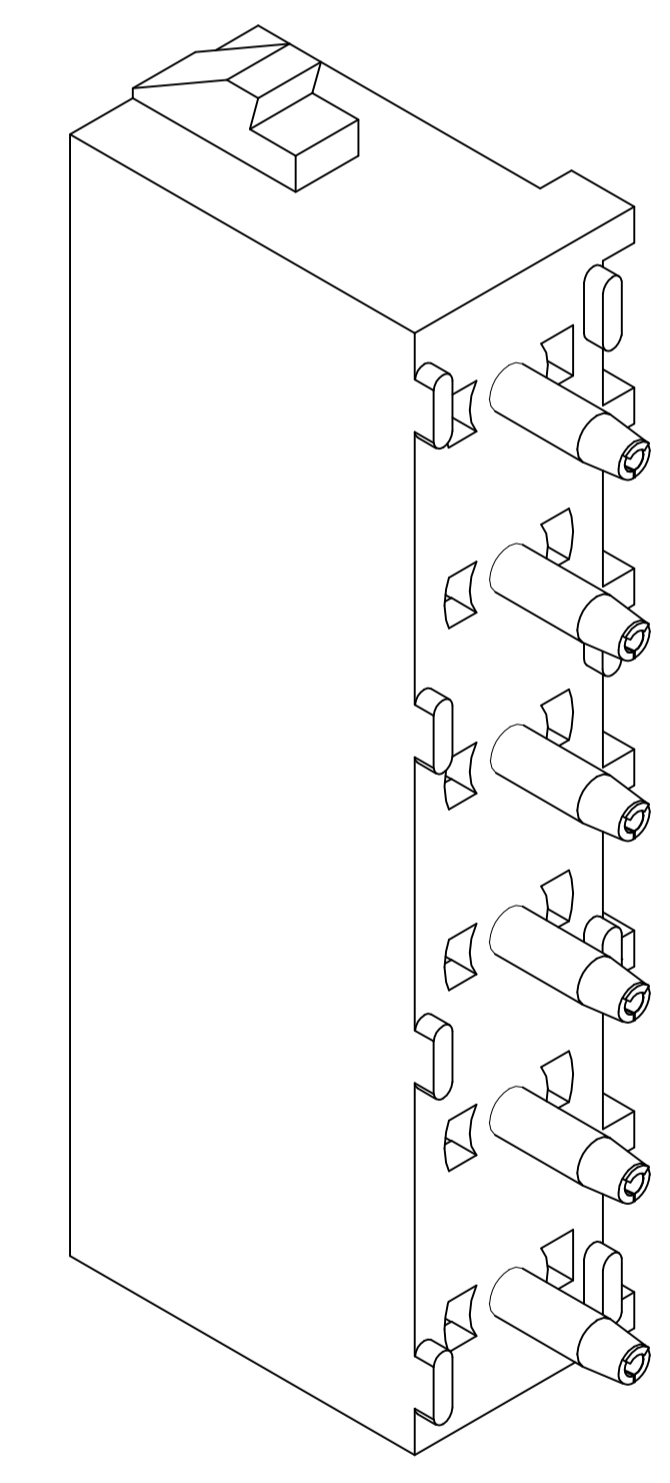


| LOC | | DIST | | REVISIONS | | | |
|-----|----|------|---------|-----------|-----|-----|--|
| CM | 00 | REV | DATE | BY | CHK | APP | |
| | | L1 | 19JAN05 | KW | SR | | |
| | | | 15JAN10 | KK | AEG | | |



- PARTS COMPLY TO AMP SOLDERABILITY SPECIFICATION 109-11-3.
- CONTACT IS PLATED OVERALL WITH 0.00127 [.000050] NICKEL, THEN 0.00076 [.000030] GOLD OVER CONTACT LENGTH INDICATED AND MATTE TIN LEAD ON SOLDER TAIL END.
- CIRCUIT IDENTIFICATION CHARACTERS ARE ADJACENT TO THE INDICATED CAVITIES, BUT LOCATION AND ORIENTATION MAY DIFFER FROM PRINT.
- DIMENSIONS IN BRACKETS ARE IN INCHES.
- CONTACT IS PLATED OVERALL WITH 0.00127 [.000050] NICKEL, THEN 0.00076 [.000030] GOLD OVER CONTACT LENGTH INDICATED AND MATTE TIN ON SOLDER TAIL END.
- OBsolete PARTS: OBsolete CIS STREAMLINING PER D.RENAUD/D.SINISI



| | | | | |
|---|---------------------------------|--------------------------|-----------------------|------------|
| 6 | OBsolete | PHOSPHOR BRONZE, GOLD | NYLON,UL94V-2,NATURAL | -641832-3- |
| | | PHOSPHOR BRONZE, GOLD | NYLON,UL94V-2,NATURAL | -641832-2- |
| | | PHOSPHOR BRONZE, PRE-TIN | NYLON,UL94V-2,NATURAL | 641832-1 |
| | PIN CONTACT MATERIAL AND FINISH | HOUSING MATERIAL | PART NUMBER | |

METRIC

| | | | |
|--|-------------------|--|--|
| THIS DRAWING IS A CONTROLLED DOCUMENT. | | DIN R LEWIS 10-05-98 | Tyco Electronics Corporation Greensboro, NC 27409 |
| DIMENSIONS: mm [INCHES] | | CHK R SWING 10-05-98 | |
| TOLERANCES UNLESS OTHERWISE SPECIFIED: | | APP'D M TRULL 10-05-98 | NAME |
| 0 PLC ± - | 1 PLC ± - | PIN HEADER ASSEMBLY, 6 CIRCUIT UNIVERSAL MATE-N-LOK™ | |
| 2 PLC ± 0.13 [.005] [0.25] | 3 PLC ± - | SIZE | CAGE CODE |
| 4 PLC ± - | ANGLES ± - 0° 30' | WEIGHT | DRAWING NO |
| MATERIAL SEE TABLE | FINISH SEE TABLE | CUSTOMER DRAWING | A1 00779 C=641832 |
| | | SCALE | SHEET 1 OF 1 |
| | | REV | L1 |

单击下面可查看定价，库存，交付和生命周期等信息

[>>TE Connectivity\(泰科\)](#)