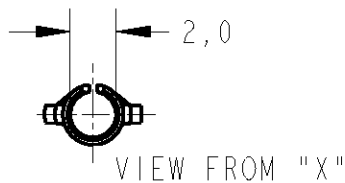
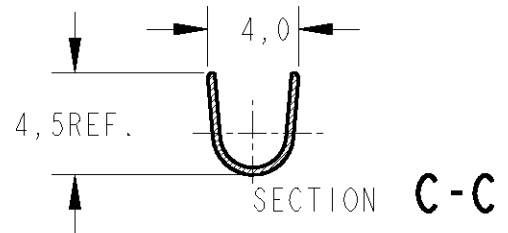
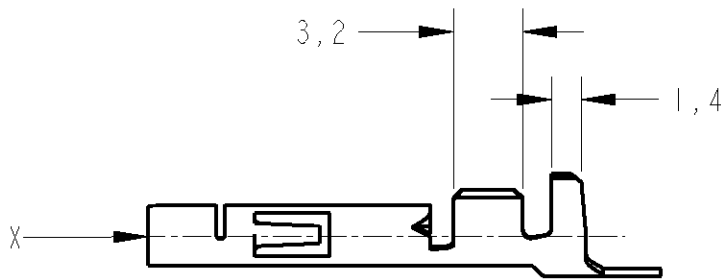
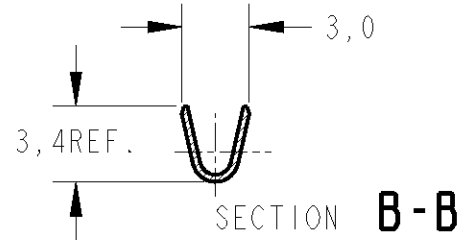
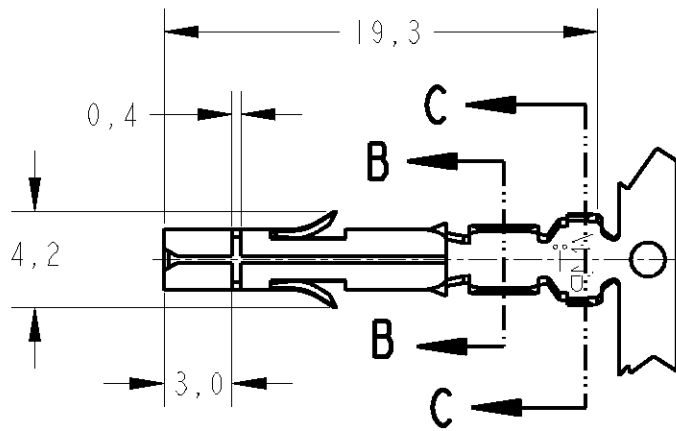


LOC	DIST	REVISIONS					
AP	-	P	LTR	DESCRIPTION	DATE	DWN	APVD
		D		REDRAW	27MAY2004	H.C	WLS
		E		REVISED BY ECR05-017239	14FEB2006	H.C	WLS



\triangle 2 - SUPERSEDED BY PN-926882-3 OR PN-350536-3

LOOSE PIECE	FINISH	MATERIAL	PART NUMBER
—	POST-PLATED/ESTANHADO	BRASS/LATÃO	881111-3
350550-3	TIN-PLATED/ESTANHADO	PH.BRONZE/BRONZE FOSF.	881111-2 \triangle 2
350550-1	TIN-PLATED/ESTANHADO	BRASS/LATÃO	881111-1

THIS DRAWING IS UNPUBLISHED. RELEASED FOR PUBLICATION 20 BY TYCO ELECTRONICS CORPORATION. ALL RIGHTS RESERVED. COPYRIGHT 20

DIMENSIONS: mm	DWN H.C. CANTERI	27MAY2004	MATERIAL	-	FINISH	-
	CHK W.L. STEFANI	27MAY2004	TYCO ELECTRONICS do Brasil LTDA. Sao Paulo, Brasil			
TOLERANCES UNLESS OTHERWISE SPECIFIED:	APVD	-				
0 PLC ±-	PRODUCT SPEC		NAME			
1 PLC ±0,4	INS. DIA. 3,30mm.		SOCKET, MATE-N-LOK, UNIVERSAL			
2 PLC ±-	APPLICATION SPEC		SIZE	CAGE CODE	DRAWING NO	RESTRICTED TO
3 PLC ±-	WIRE RANGE 20/14AWG		A 4	00779	C=881111	-
4 PLC ±-	WEIGHT	-	CUSTOMER DRAWING			
ANGLES ±1°			SCALE	-	SHEET	OF
						REV
						E

单击下面可查看定价，库存，交付和生命周期等信息

[>>TE Connectivity\(泰科\)](#)