

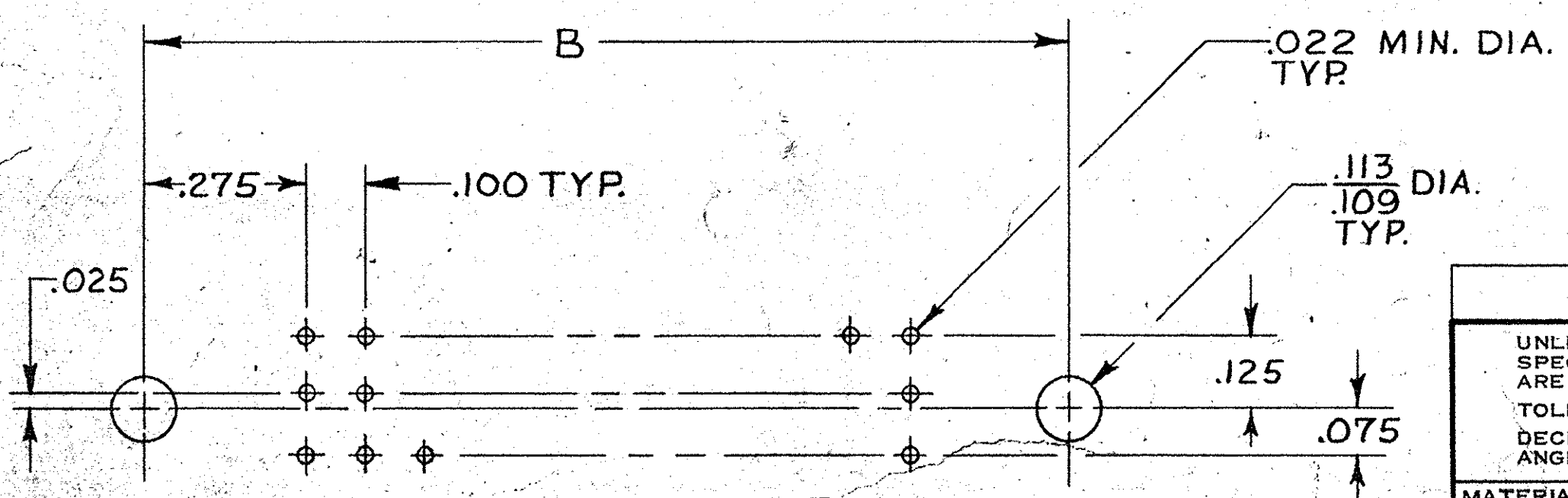
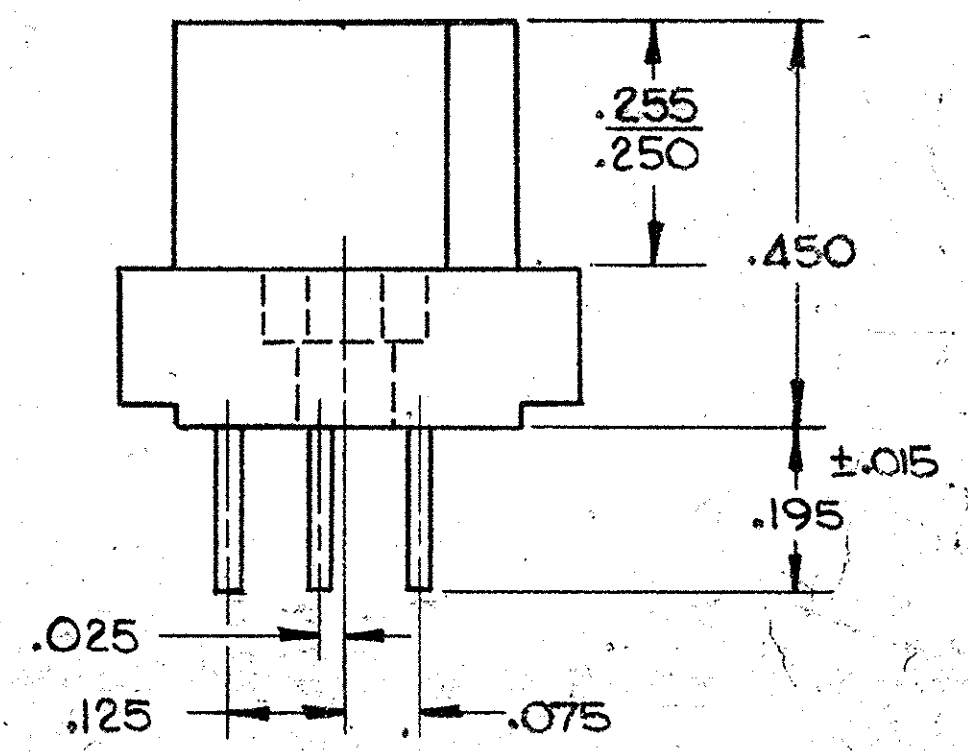
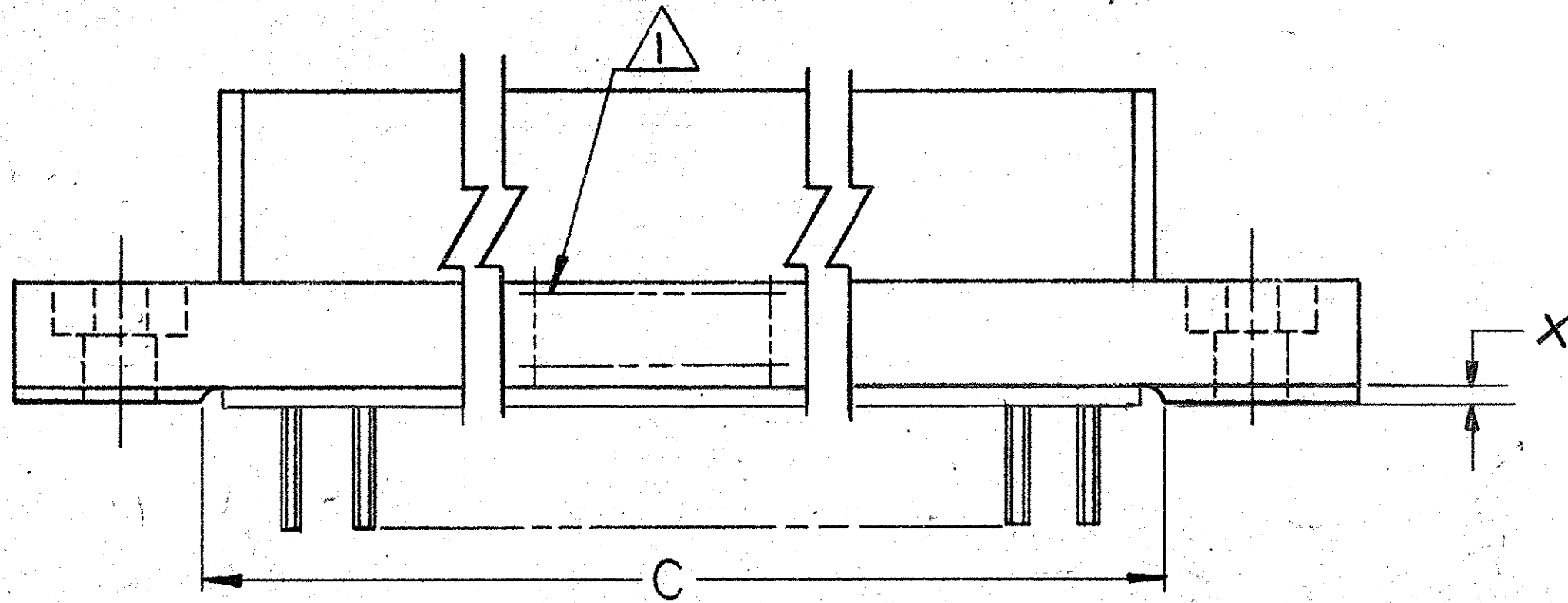
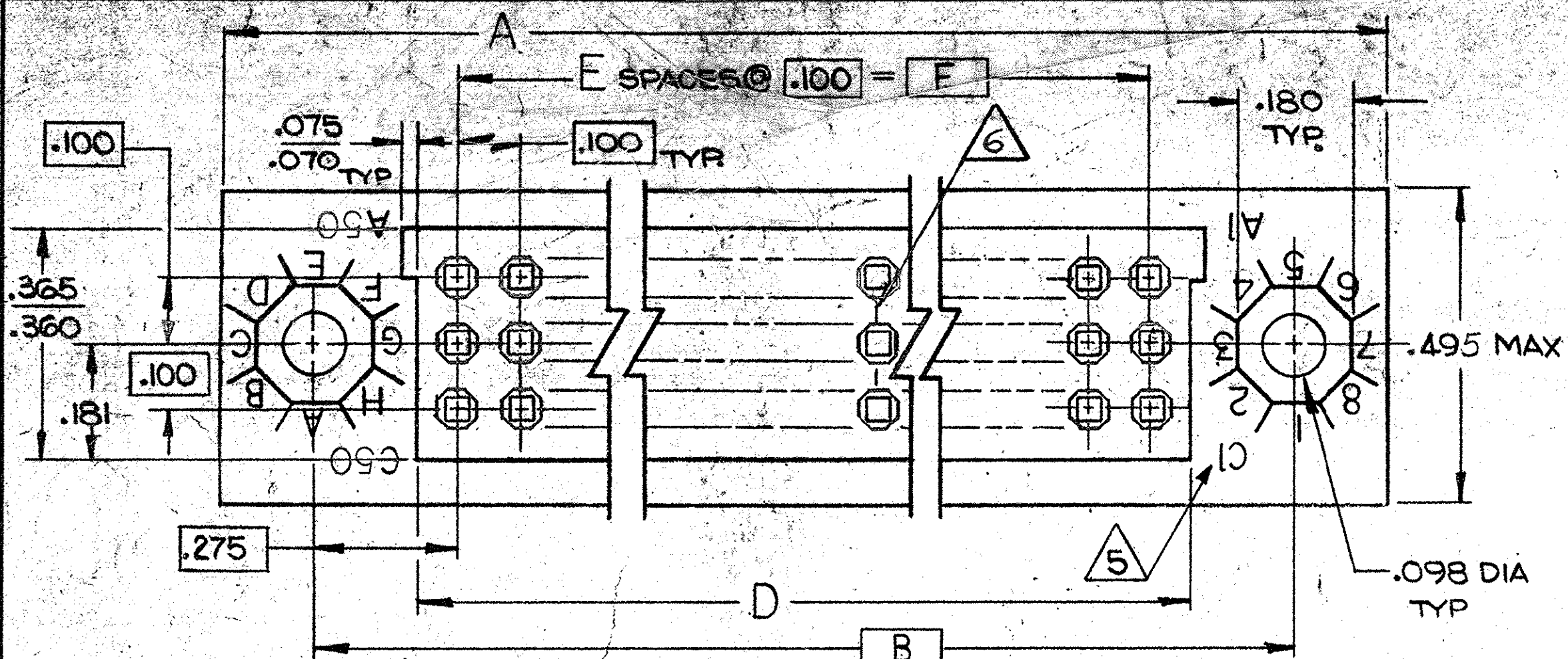
© COPYRIGHT 19 BY AMP INCORPORATED, HARRISBURG, PA.
ALL INTERNATIONAL RIGHTS RESERVED. AMP INCORPORATED PRODUCTS
COVERED BY U. S. AND FOREIGN PATENTS AND/OR PATENTS PENDING.

THIS DRAWING IS UNPUBLISHED

RELEASED FOR PUBLICATION

J 19

REVISIONS						
P	F	ZONE	LTR	DESCRIPTION	DATE	APPROVED
				RELEASED WAS 5085-1104	BGM 3-85	
				REV DIM: AB-1594	db 5-86	EAM
				REV PER DF-3038	TW 3-6-90	AS4
				REV PER DF4441	RR BHM 5-6-91	
				REV PER DF-6974	TA 3-93	BHM
				REV PER ECD-07-004569	3-07	PY



P.C. BOARD LAYOUT

UNLESS OTHERWISE SPECIFIED DIMENSIONS ARE IN INCHES. TOLERANCES ON: DECIMALS ±.010 ANGLES ±		CONTRACT NO. 8-7-84		PART NO.	
MATERIAL 2 3		DR <i>M. Smith</i>		AMP INCORPORATED Harrisburg, Pa.	
FINISH 9		CHK <i>E. A. Mc Dougle</i>		NAME RECEPTACLE ASSEMBLY, .100 C, 3 ROW, W/MOUNTING EARS, BOX CONTACT, SOLDER TAIL W/GASKET	
		APPD <i>E. J. Mc Dougle</i>		SIZE CODE IDENT NO DRAWING NO.	
		APPD <i>B. Smith</i>		C 00779 533610	
		DSGN APPD		REV D	
		OTHER APPD		SCALE 5:1 SHEET 1 OF 2	

533610

THIS DRAWING IS UNPUBLISHED. RELEASED FOR PUBLICATION, 19
 © COPYRIGHT 19 BY AMP INCORPORATED, HARRISBURG, PA. ALL INTERNATIONAL RIGHTS RESERVED. AMP PRODUCTS MAY BE COVERED BY U.S. AND FOREIGN PATENTS AND/OR PATENTS PENDING.

REVISIONS			
P/F	ZONE	LTR	DESCRIPTION
			DATE APPROVED

SEE SHEET 1

- 1. 34050975-004, AMP, DATE CODE AND AMP PART NUMBER MARKED THIS AREA
- 2. HOUSING MATERIAL: POLYPHENYLENE SULFIDE, GST-40F PER MIL-M-24519.
- 3. CONTACT MATERIAL: BERYLLIUM COPPER (BeCu) OR COPPER NICKEL SILICONE (CuNiSi)
- 4. ~~.000050 GOLD OVER .000030 NICKEL.~~
- 5. LETTERS INDICATING OUTSIDE ROWS AND NUMBERS INDICATING END CAVITIES MARKED THIS SURFACE.
- 6. LINES INDICATING EVERY FIVE CAVITIES MARKED ON MATING FACE.
- 7. ASSEMBLY COMPONENTS ARE IDENTICAL TO MIL-C-55302/130 SPECS. EXCEPT GASKET IS INCLUDED
- 8. GROUP A & B INSPECTION REQUIRED PER MIL-C-55302.
- 9. .000050 GOLD IN CONTACT AREA, .000100 TIN LEAD ON SOLDER TAILS OVER .000030 NICKEL ON ENTIRE CONTACT.

.022	4.900	49	5.024	5.125	5.450	5.750	150	533610-1
------	-------	----	-------	-------	-------	-------	-----	----------

X	F	E	D	C	B	A	NO. OF POS.	PART NO
---	---	---	---	---	---	---	-------------	---------

UNLESS OTHERWISE SPECIFIED DIMENSIONS ARE IN INCHES. TOLERANCES ON: DECIMALS ±.010 ANGLES ±	CONTRACT NO 8-7-84		AMP AMP INCORPORATED Harrisburg, Pa. 17105 NAME RECEPTACLE ASSEMBLY, .100 &, 3 ROW, W/ MOUNTING EARS, BOX CONTACT, SOLDER TAIL, W/ GASKET.	
	DR <i>M. Smich</i>	CHK <i>E.A. Mc Dougle</i>		
MATERIAL	APPD <i>E.A. Mc Dougle</i>	3-27-85	SIZE C	FSCM NO 00779
FINISH	APPD <i>E.A. Mc Dougle</i>	3-27-85	DRAWING NO 533610	REV D
	DSGN APPD		SCALE	SHEET 2
	OTHER APPD			

533610

单击下面可查看定价，库存，交付和生命周期等信息

[>>TE Connectivity\(泰科\)](#)