

4

3

2

1

THIS DRAWING IS UNPUBLISHED.

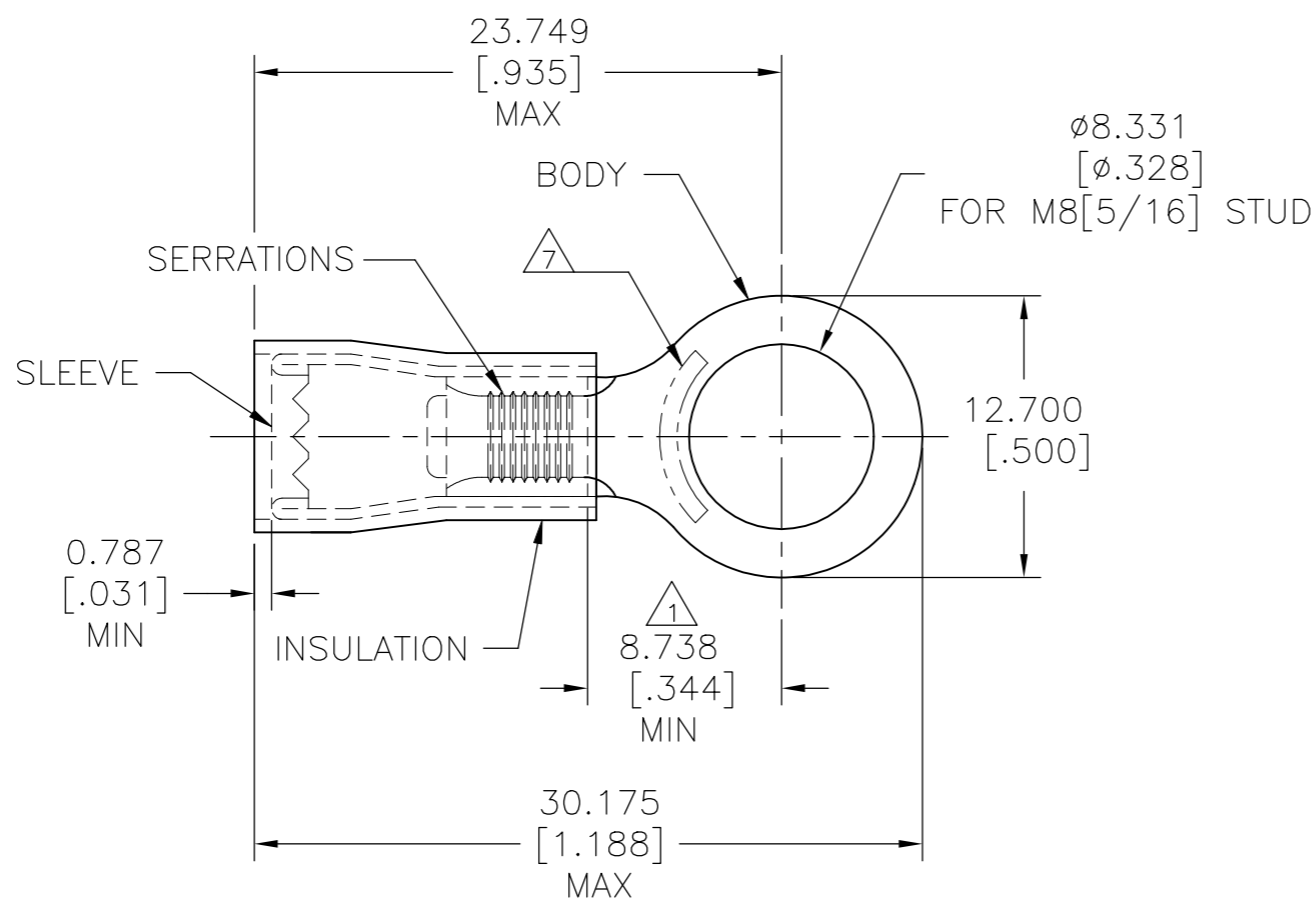
RELEASED FOR PUBLICATION

© COPYRIGHT - TE Connectivity Ltd.

ALL RIGHTS RESERVED.

REVISIONS

P	LTR	DESCRIPTION	DATE	DWN	APVD
	D1	REVISED PER ECO-17-008114	08JUN2018	RS	DR



- 1 APPLIES FROM EDGE OF METAL WIRE BARREL TO CENTER OF STUD HOLE
- 2 BODY MATERIAL THICKNESS 0.838[.033] MAX
- 3 WIRE RANGE: 12-10 AWG
WIRE CROSS-SECTIONAL AREA:
2.7-6.6mm²[5,180-13,100] CIR MILS
- 4 INSULATION RANGE:
3.810-6.350[.150-.250] DIA
- 5 MATERIAL:
BODY & SLEEVE: COPPER PER ASTM B152
INSULATION: NYLON
- 6 FINISH:
BODY & SLEEVE: TIN PLATE PER ASTM B545
INSULATION: COLOR - YELLOW
- 7 STAMP 12-10* APPROX AS SHOWN

500	LOOSE PIECE	160298
QTY	PACKAGE TYPE	PART NO.

THIS DRAWING IS A CONTROLLED DOCUMENT.		DWN	08JUN2018		TE Connectivity Ltd.
		CHK	08JUN2018		
		APVD	08JUN2018		
		PRODUCT SPEC	NAME		
DIMENSIONS: mm [INCHES]		TOLERANCES UNLESS OTHERWISE SPECIFIED: 0 PLC ± - 1 PLC ± - 2 PLC ± - 3 PLC ± 0.127[.005] 4 PLC ± - ANGLES ± -		P.I.D.G. RING TONGUE	
		APPLICATION SPEC UL 486 A-B		SIZE CAGE CODE DRAWING NO RESTRICTED TO A3 00779 C-160298 -	
MATERIAL 5		FINISH 6		WEIGHT CUSTOMER DRAWING	
		SCALE		SHEET	
		3:1		1 OF 1	
				REV D1	

单击下面可查看定价，库存，交付和生命周期等信息

[>>TE Connectivity\(泰科\)](#)