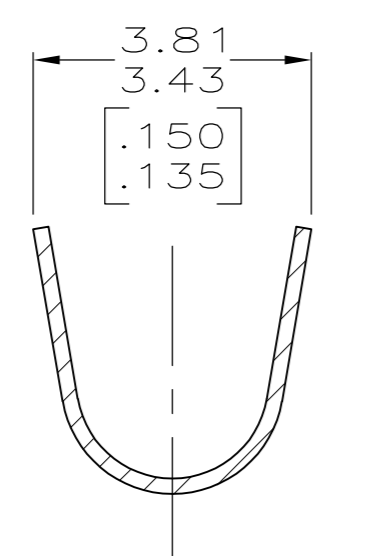
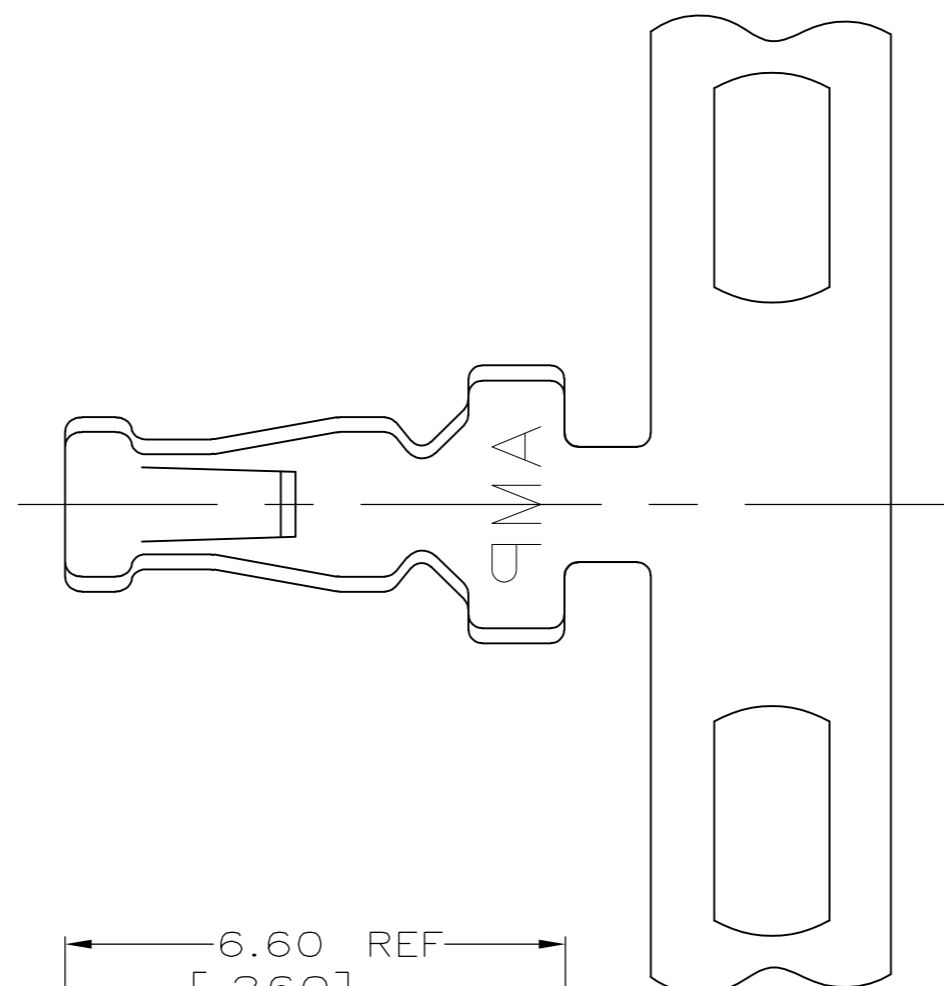
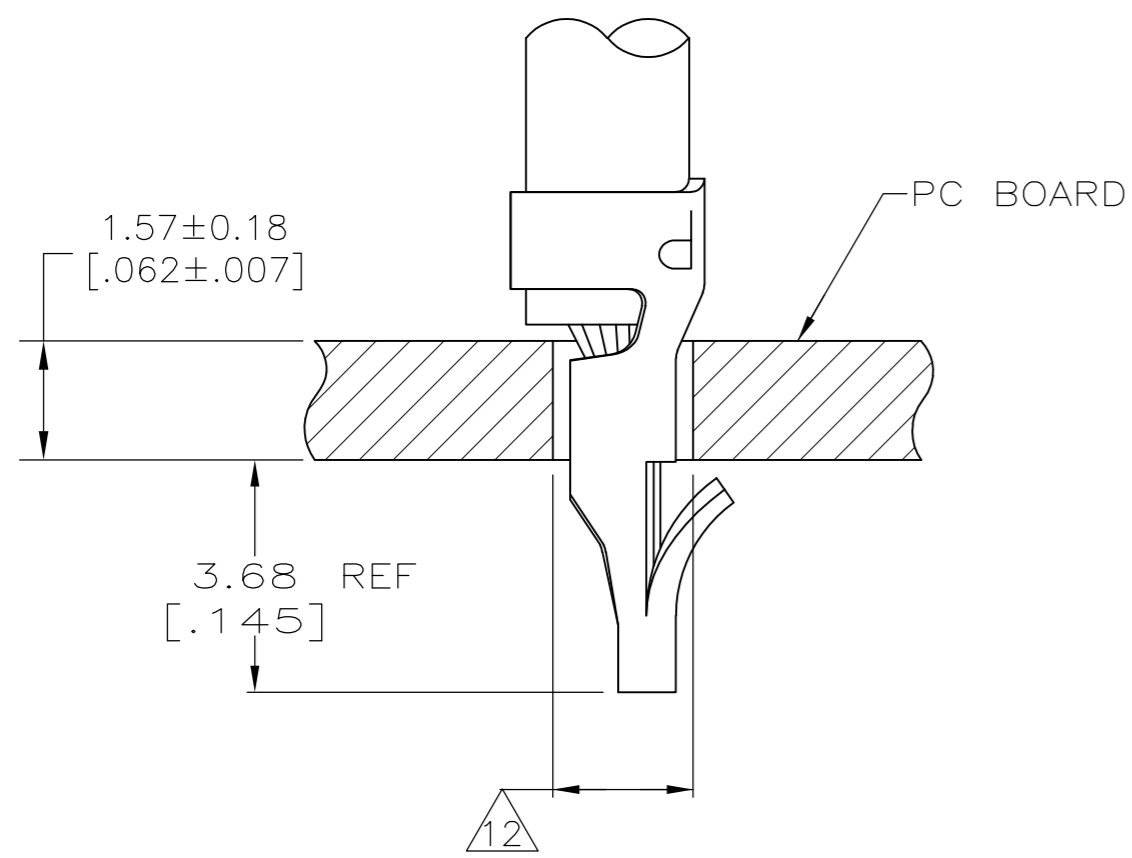
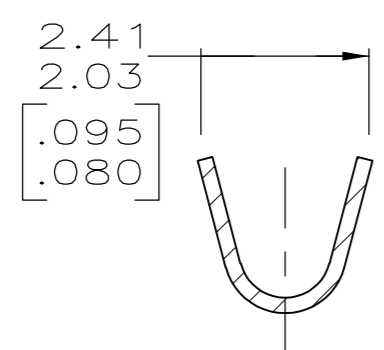
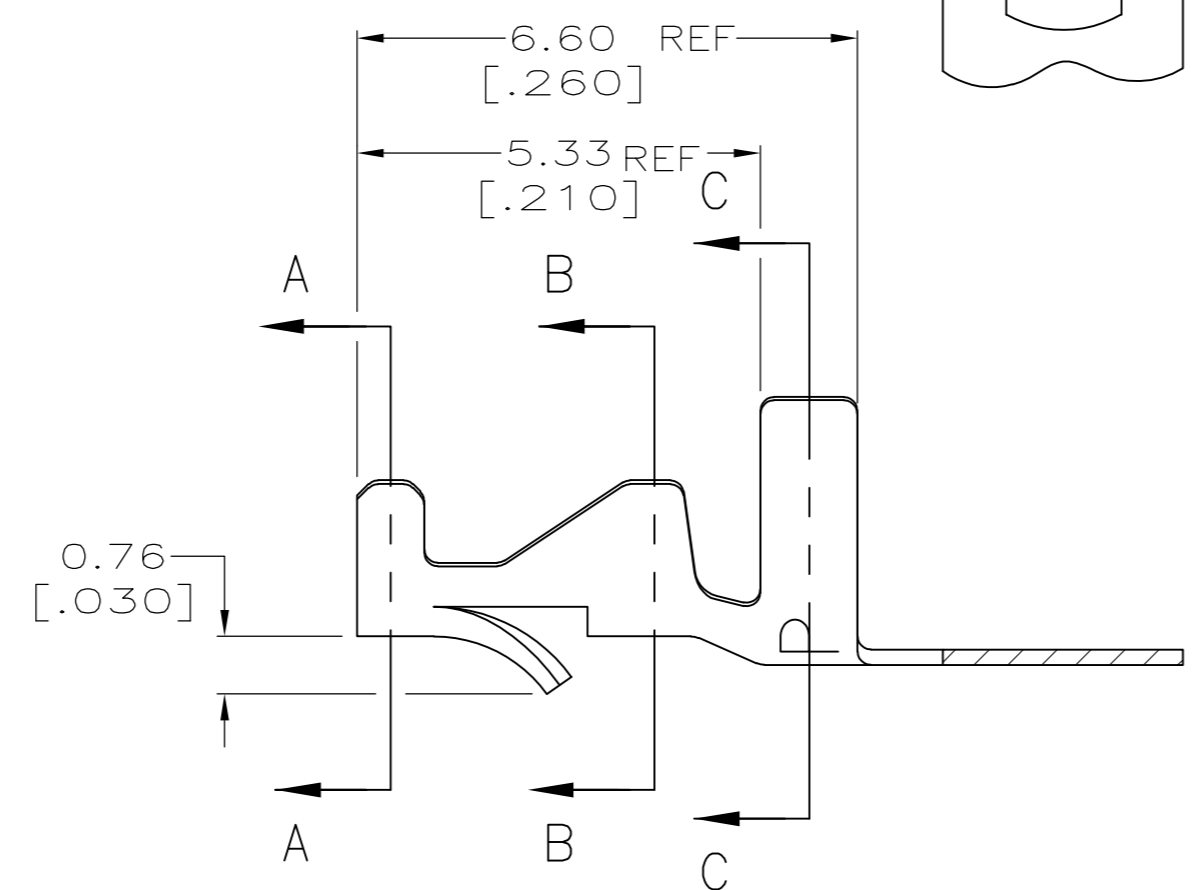


THIS DRAWING IS UNPUBLISHED. RELEASED FOR PUBLICATION
 © COPYRIGHT - By - ALL RIGHTS RESERVED.

| LOC | DIST | REVISIONS | | | | | |
|-----|------|-----------|-----|---------------------------|---------|-----|------|
| CM | 00 | P | LTR | DESCRIPTION | DATE | DWN | APVD |
| | | R6 | | REVISED PER ECO-12-014997 | 22AUG12 | KH | SM |



SECTION C-C

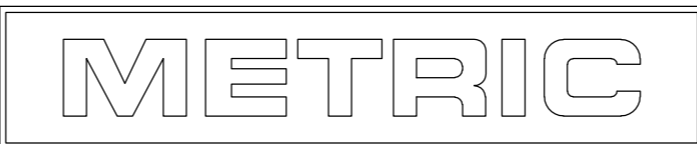


SECTION A-A, B-B

- 1 PARTS COMPLY WITH AMP SOLDERABILITY SPEC 109-11-3.
- 2 0.00508 [.000200] MIN BRIGHT TIN-LEAD.
- 3 PARTS COMPLY WITH AMP SOLDERABILITY SPEC 109-11-1.
- 4 0.00305 [.000120] MIN BRIGHT TIN-LEAD OVER 0.00102 [.000040] MIN NICKEL.
- 5 FOR FOREIGN PRODUCTION ONLY.
- 6 CARRIER STRIP TO HAVE 1.52 [.060] DIA PILOT HOLE
- 7 0.00305 [.000120] MIN TIN OVER 0.00102 [.000040] MIN NICKEL.
- 8 WIRE RANGE: 0.3 - 0.9 mm² (22 - 18 AWG).
- 9 INSULATION RANGE: 1.52 - 2.79 [.060 - .110] DIA.
- 10 DIMENSIONS IN BRACKETS ARE IN INCHES.
- 11 0.00508 [.000200] MIN BRIGHT TIN.
- 12 HOLE DIAMETER TO BE 1.83±0.08 FOR WIRE 0.3-0.6mm² (20-22 AWG) OR 1.96±0.08 FOR WIRE 0.8-0.9mm² (18 AWG).

| NOTES | FINISH | MATERIAL | PART NO. |
|-------|--------|-------------------|---------------------|
| 1 | 11 | 0.20[.008] PH BRZ | 3-640311-1 |
| 3 5 6 | 7 | 0.20[.008] BRASS | 640311-5 |
| 3 5 | 4 | 0.20[.008] BRASS | 640311-3 |
| 1 | 2 | 0.20[.008] PH BRZ | 640311-1 |

| | | | | |
|--|--|----------------------------------|-------------------------------|--|
| THIS DRAWING IS A CONTROLLED DOCUMENT. | | DWN S. CARPENTER 21AUG2003 | TE TE Connectivity | |
| DIMENSIONS: INCHES | | CHK J. ELLIS 21AUG2003 | | |
| TOLERANCES UNLESS OTHERWISE SPECIFIED: | | APVD J. ELLIS 21AUG2003 | NAME MINI AMP-IN™ | |
| 0 PLC ± | | PRODUCT SPEC | SIZE CAGE CODE DRAWING NO | |
| 1 PLC ± | | APPLICATION SPEC | RESTRICTED TO | |
| 2 PLC ± 0.13 [.005] | | 114-1016 | A2 00779 C-640311 | |
| 3 PLC ± | | WEIGHT | SCALE 1:1 SHEET 1 of 1 REV R6 | |
| 4 PLC ± | | CUSTOMER DRAWING | | |
| ANGLES ± | | | | |
| FINISH | | | | |
| SEE TABLE | | | | |



单击下面可查看定价，库存，交付和生命周期等信息

[>>TE Connectivity\(泰科\)](#)