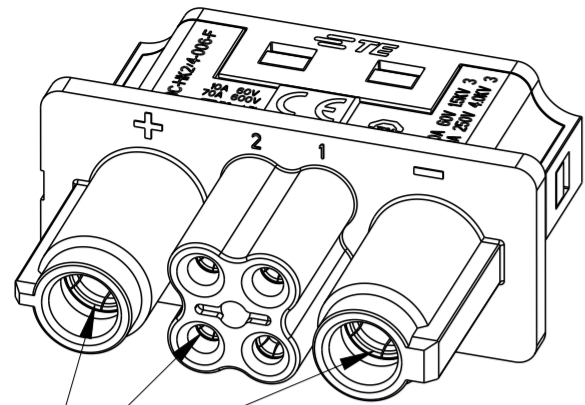
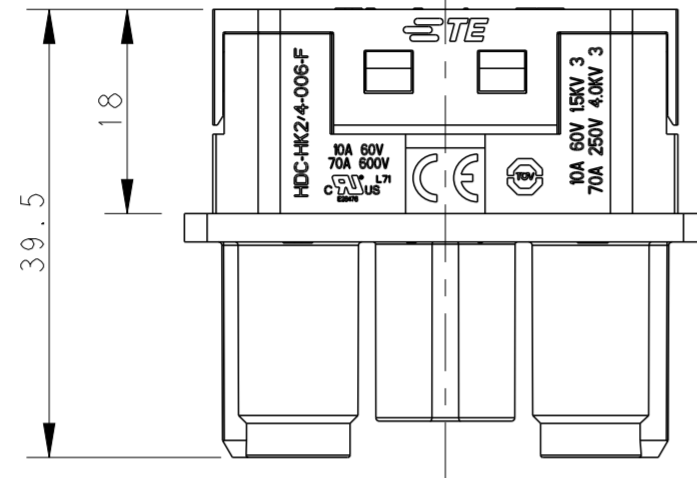


REVISIONS					
P	LTR	DESCRIPTION	DATE	DWN	APVD
A		INITIAL	09AUG2022	DW	CW
A1		ECR-23-170694	29MAR2023	DW	CW



CONTACT NEED TO BE ORDERED SEPARATELY
端子需要单独订购, 不包含在此料号中.

基本尺寸	<=6	>6-30	>30-50	>50-100	未注角度
公差	±0.1	±0.2	±0.3	±0.5	±0.5°

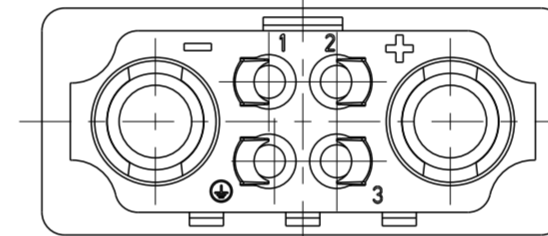
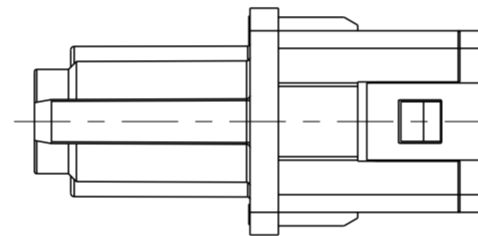
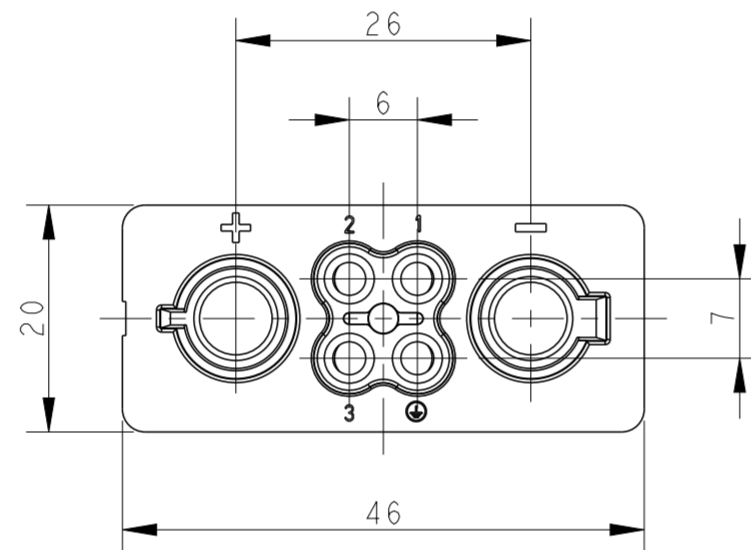
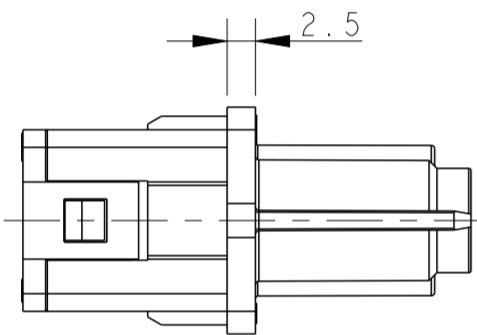


CERTIFICATION	PARAMETERS
Acc. to CUL(CNR)	POWER CURRENT: 70A @AWG 6(16 mm ²); SIGNAL CURRENT: 10A @AWG 14(2.5 mm ²); 电源电流: 70A @AWG 6(16 mm ²); 信号电流: 10A @AWG 14(2.5 mm ²)
Acc. to UL(USR)	POWER CURRENT: 80A @AWG 6(16 mm ²); SIGNAL CURRENT: 3A @AWG 22(0.3 mm ²); 电源电流: 80A @AWG 6(16 mm ²); 信号电流: 3A @AWG 22(0.3 mm ²)
Acc. to TUV	POWER CURRENT: 70A @AWG 6(16 mm ²); SIGNAL CURRENT: 10A @AWG 14(2.5 mm ²); 电源电流: 70A @AWG 6(16 mm ²); 信号电流: 10A @AWG 14(2.5 mm ²)

NOTES:

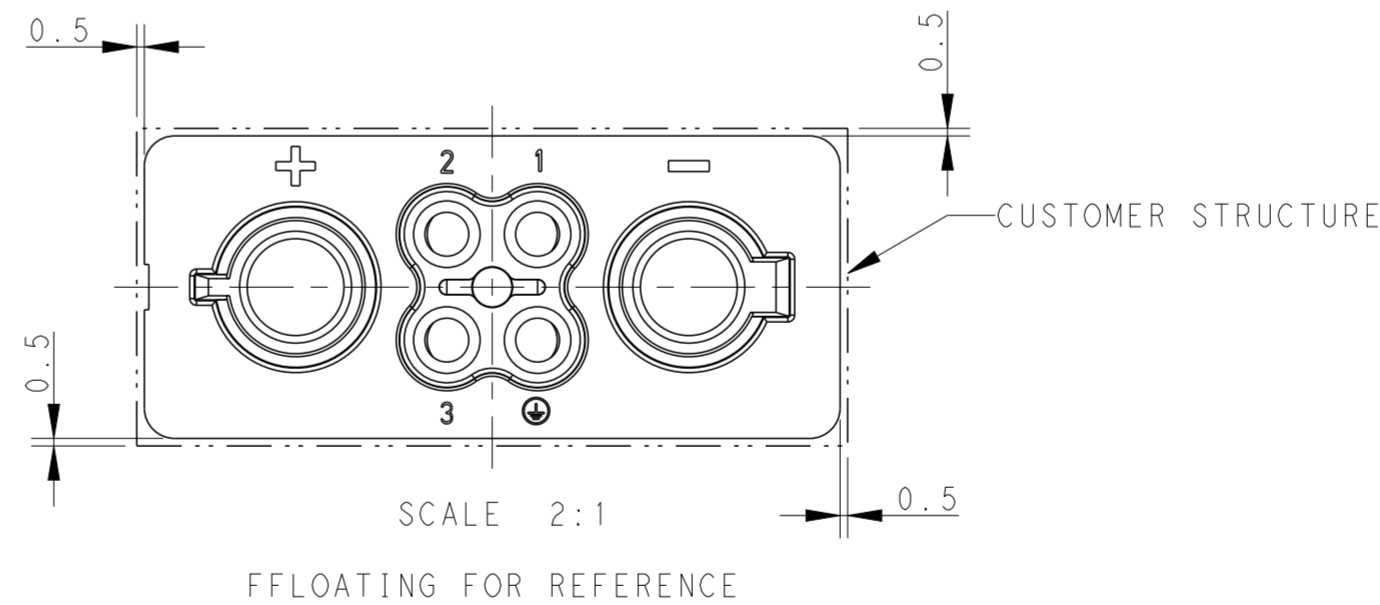
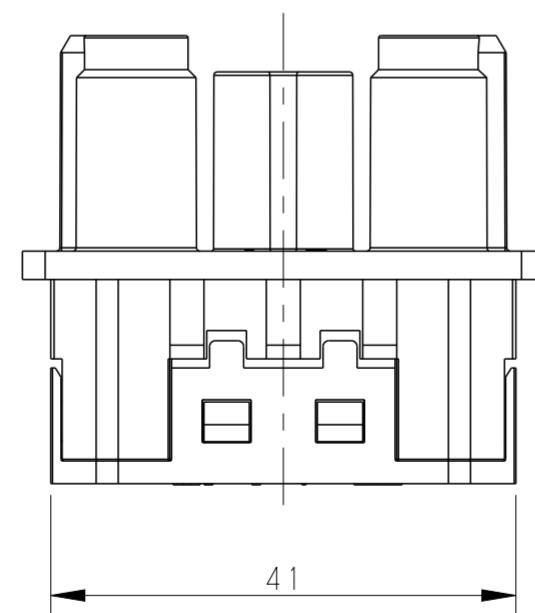
- TECHNICAL CHARACTERISTICS:
INSULATION MATERIAL: PC, BLACK
RATING VOLTAGE: POWER: 250V MAX.; SIGNAL: 60V MAX.
RATING CURRENT: POWER: 80A MAX.; SIGNAL: 10A MAX.
INSULATION RESISTANCE: >=400MΩ
RATED IMPULSE VOLTAGE: POWER: 4.0KV
SIGNAL: 1.5KV

POLLUTION DEGREE: 3
MATING CYCLES: 30000 CYCLES
WIRE RANGE:
POWER: 10-16mm² (8-6AWG)
SIGNAL: 0.14-2.5mm² (26-14AWG)
CONTACT TYPE: CRIMP CONTACT
FLOATING: 0.5mm GAP BETWEEN CUSTOMER STRUCTURE AND TE CONNECTOR FOR FLOATING
- CONTACT NEED TO BE ORDERED SEPARATELY
POWER CONTACT PN REFER TO DRAWING: T2400032XX0002
SIGNALCONTACT PN REFER TO DRAWING: T20300320XX000



注释:

- 技术参数:
绝缘材料: PC, 黑色
额定电压: 电源: 250V MAX.; 信号: 60V MAX.
额定电流: 电源: 80A MAX.; 信号: 10A MAX.
绝缘电阻: >=400MΩ
额定脉冲电压: 电源: 4.0KV; 信号: 1.5KV
污染等级: 3
插拔次数: 30000次
接线范围:
电源: 10-16mm² (8-6AWG)
信号: 0.14-2.5mm² (26-14AWG)
接线类型: 冷压接
浮动设置: 客户的结构和TE 连接器之间有0.5mm 的间隙作为浮动量.
- 端子需要单独订购
电源端子料号参考图面: T2400032XX0002
信号端子料号参考图面: T20300320XX000



T2120062201-001	HK2/4-006-F	HK2/4-006 FEMALE INSERT HK2/4-006 母插
PART NUMBER 产品料号	PART DESCRIPTION 产品描述	

THIS DRAWING IS A CONTROLLED DOCUMENT.		DWN DAVID WANG 28JUN2022	TE Connectivity	
DIMENSIONS: mm		CHK GINO YAO 28JUN2022		
TOLERANCES UNLESS OTHERWISE SPECIFIED:		APVD CHRIS WANG 28JUN2022	NAME HK2/4-006-F	
0 PLC ± 1 PLC ± 2 PLC ± 3 PLC ± 4 PLC ± ANGLES ±		PRODUCT SPEC 108-137613	SIZE A2	CAGE CODE 00779
MATERIAL -		APPLICATION SPEC 114-137613	DRAWING NO T2120062201001	RESTRICTED TO -
FINISH -		WEIGHT -	SCALE 3:2	SHEET 1 OF 1
CUSTOMER DRAWING		REV A1		

单击下面可查看定价，库存，交付和生命周期等信息

[>>TE Connectivity\(泰科\)](#)