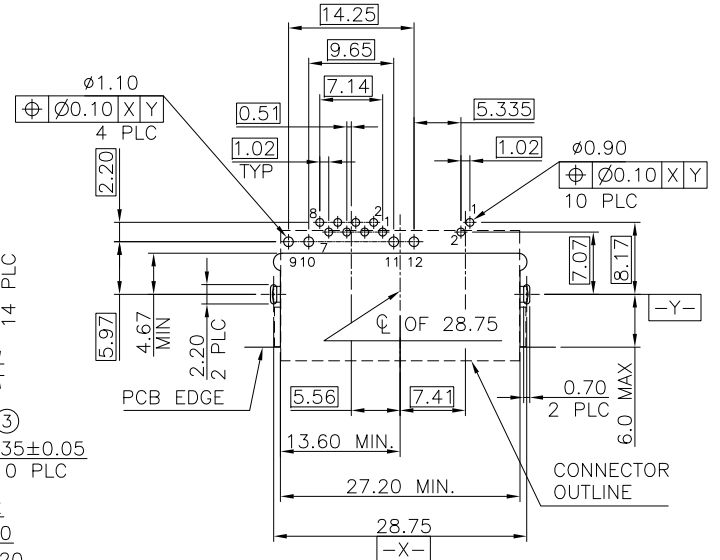
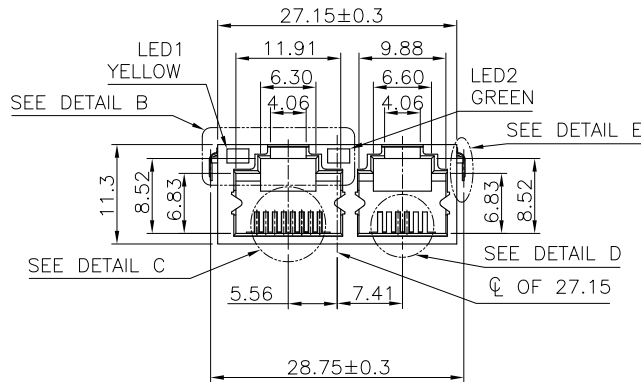
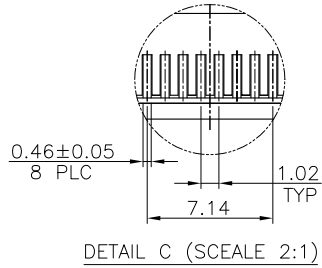
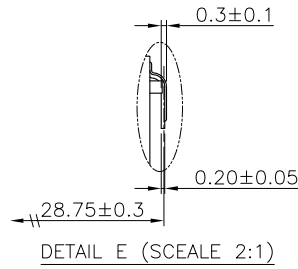
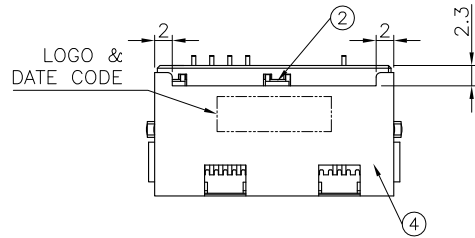
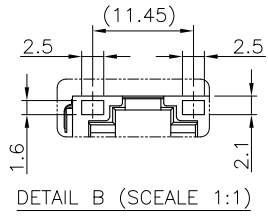
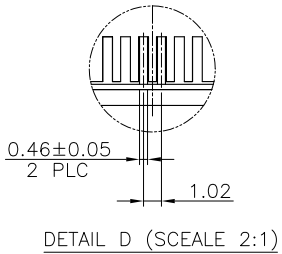


LOC		DIST		REVISIONS				
P	LTR	DESCRIPTION			DATE	DWN	APVD	
B		ECR-12-012115			26OCT12	EL	WK	



RECOMMENDED PCB LAYOUT
 RECOMMENDED PCB THICKNESS: 1.2mm
 TOLERANCE: ±0.05 (TOP VIEW)



LED SCHEMATIC	
LED1	LED2
YELLOW	GREEN

OBSOLETE	1.27µm [50µ"]	-2041120-4-
	0.762µm [30µ"]	-2041120-3-
	0.381µm [15µ"]	-2041120-2-
	0.152µm [6µ"]	2041120-1
	MIN. GOLD THICKNESS	PART NUMBER

NOTE:

- MATERIAL:
 - HOUSING: PA9T, WITH 30% GF, UL94 V-0, BLACK COLOR.
 - LED COVER: PA9T, WITH 30% GF, UL94 V-0, BLACK COLOR.
 - CONTACTS: PHOSPHOR BRONZE.
 - SHELL: BRASS.
 - LED SOLDER TAIL: STEEL.
- FINISH:

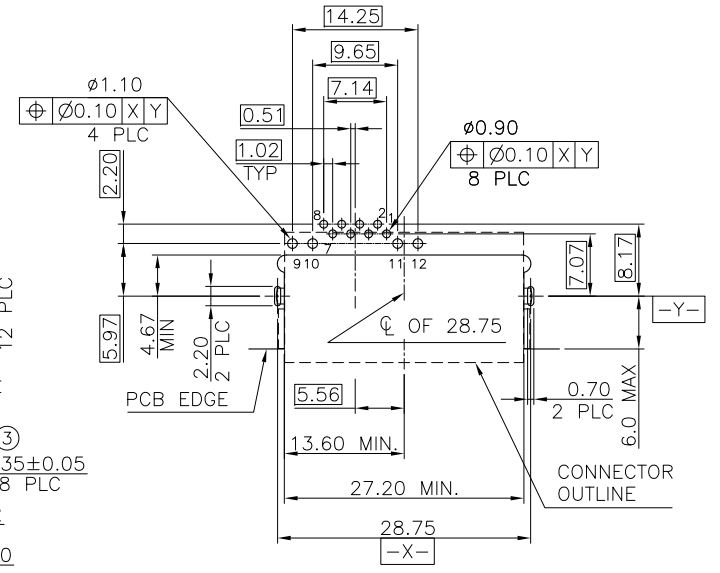
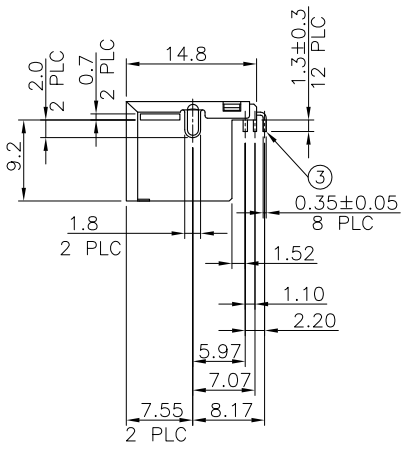
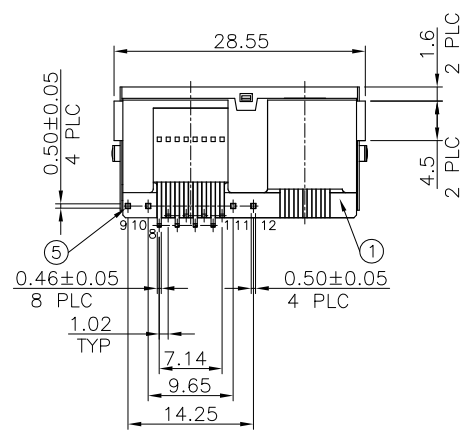
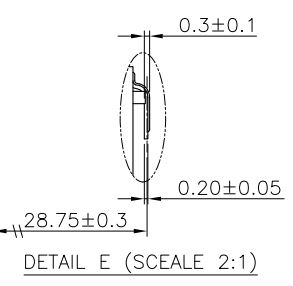
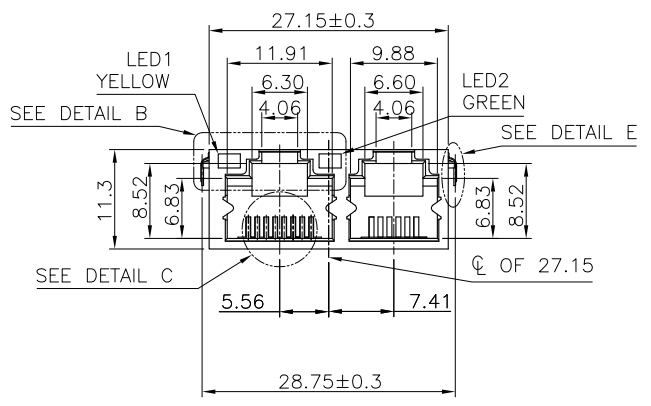
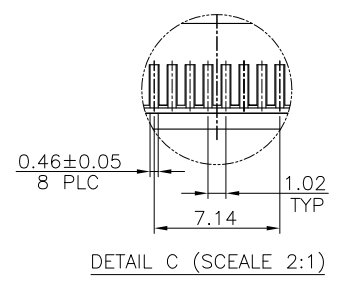
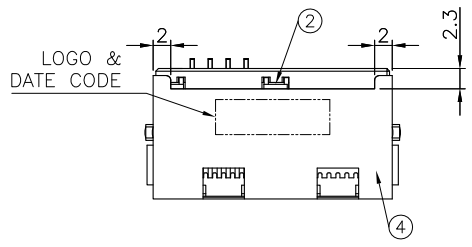
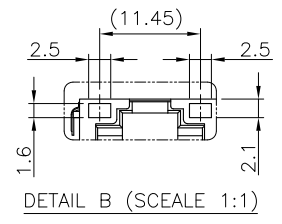
CONTACTS: (SEE TABLE) GOLD PLATED ON CONTACT AREA, GOLD FLASH ON SOLDER TAIL, 1.27µm [50µ"] MIN. NICKEL ENTIRE CONTACT UNDERPLATED

SHELL: 0.508µm [20µ"] MIN. NICKEL PLATED.

LED SOLDER TAIL: 2.159µm [85µ"] MIN. TIN PLATED.
- WAVE SOLDER CAPABLE TO 265°C PER TE SPEC 109-202, CONDITION B.

DIMENSIONS: MM		TOLERANCES UNLESS OTHERWISE SPECIFIED:		THIS DRAWING IS A CONTROLLED DOCUMENT.		DWN B. HSING 24APR2009		TE Connectivity	
 0 PLC ± - 1 PLC ± 0.30 2 PLC ± 0.20 3 PLC ± 0.15 4 PLC ± 0.15 ANGLES ± - ± 3'	MATERIAL	FINISH		APVD W. KODAMA 24APR2009		NAME		MODULAR JACK, RJ45+RJ11 DIP TYPE	
		SEE NOTE		PRODUCT SPEC		108-57760			
		SEE NOTE		APPLICATION SPEC		-			
WEIGHT		3.70 GRAMS		SIZE		A3		RESTRICTED TO	
CUSTOMER DRAWING		SCALE		SHEET		1 of 3		REV B	

LOC	DW	DIST	-	REVISIONS			
P	LTR	DESCRIPTION	DATE	DWN	APVD		
		SEE SHEET 1.					



RECOMMENDED PCB LAYOUT
 RECOMMENDED PCB THICKNESS: 1.2mm
 TOLERANCE: ±0.05 (TOP VIEW)

LED SCHEMATIC	
LED1	LED2
YELLOW	GREEN
10	12

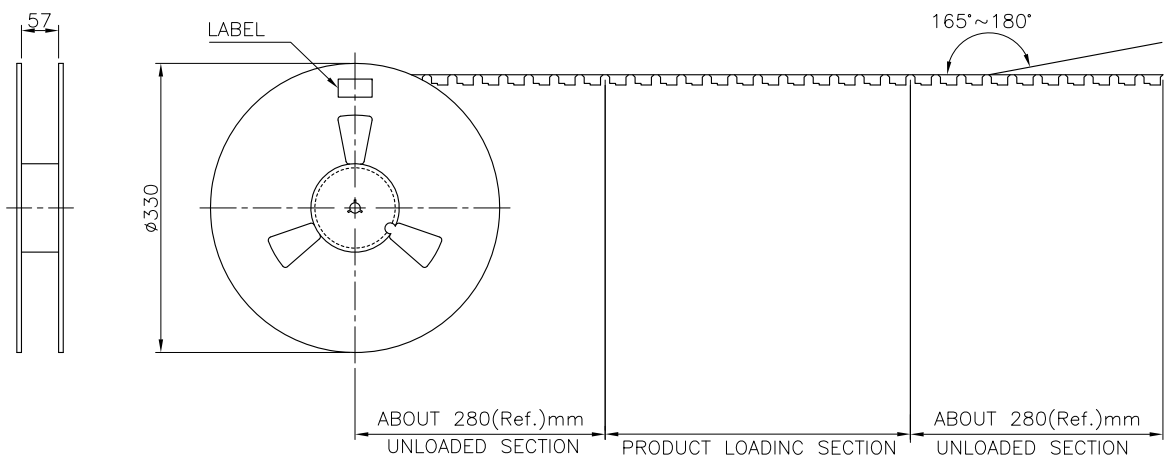
- NOTE:
- MATERIAL:
 - ① HOUSING: PA9T, WITH 30% GF, UL94 V-0, BLACK COLOR.
 - ② LED COVER: PA9T, WITH 30% GF, UL94 V-0, BLACK COLOR.
 - ③ CONTACTS: PHOSPHOR BRONZE.
 - ④ SHELL: BRASS.
 - ⑤ LED SOLDER TAIL: STEEL.
 - FINISH:
 - CONTACTS: (SEE TABLE) GOLD PLATED ON CONTACT AREA, GOLD FLASH ON SOLDER TAIL, 1.27µm [50µ"] MIN. NICKEL. ENTIRE CONTACT UNDERPLATED
 - SHELL: 0.508µm [20µ"] MIN. NICKEL PLATED.
 - LED SOLDER TAIL: 2.159µm [85µ"] MIN. TIN PLATED.
 - WAVE SOLDER CAPABLE TO 265°C PER TE SPEC 109-202, CONDITION B.

OBSOLETE	1.27µm [50µ"]	1-2041120-4
	0.762µm [30µ"]	1-2041120-3
	0.381µm [15µ"]	1-2041120-2
	0.152µm [6µ"]	1-2041120-1
	MIN. GOLD THICKNESS	PART NUMBER

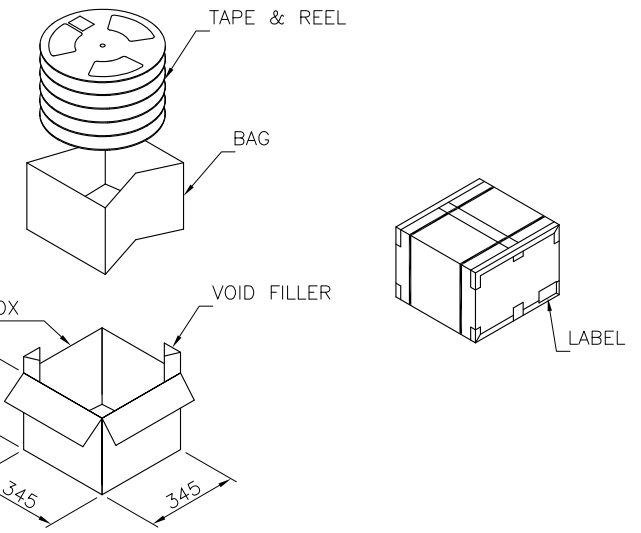
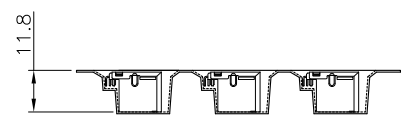
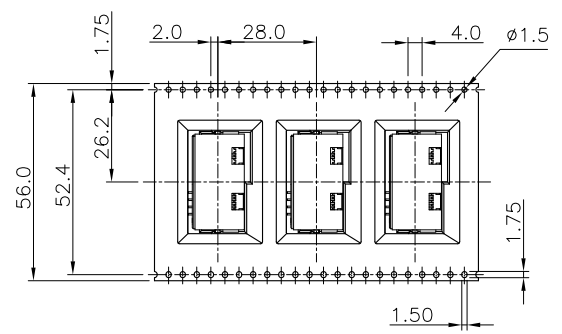
THIS DRAWING IS A CONTROLLED DOCUMENT.		DWN				
DIMENSIONS: MM		CHK				
TOLERANCES UNLESS OTHERWISE SPECIFIED:		APVD	NAME			
<ul style="list-style-type: none"> 0 PLC ± - 1 PLC ± 0.30 2 PLC ± 0.20 3 PLC ± 0.15 4 PLC ± - ANGLES ± - ± 3' 		PRODUCT SPEC	MODULAR JACK, RJ45+RJ11 DIP TYPE			
MATERIAL SEE NOTE		APPLICATION SPEC	SIZE	CAGE CODE	DRAWING NO	RESTRICTED TO
FINISH SEE NOTE		WEIGHT	A3	-	©=2041120	-
		CUSTOMER DRAWING	SCALE	SHEET	2 of 3	REV B

THIS DRAWING IS UNPUBLISHED. RELEASED FOR PUBLICATION AUG ,2006.
 © COPYRIGHT BY TYCO ELECTRONICS CORPORATION. ALL RIGHTS RESERVED.

LOC		DIST		REVISIONS					
DW				P	LTR	DESCRIPTION	DATE	DWN	APVD
						SEE SHEET 1.			



USER DIRECTION OF UNREELING →



5.7 Kg	3.7 Kg	200	5	1000 PCS
GROSS WEIGHT (Ref.)	NET WEIGHT (Ref.)	PCS/REEL	REELS /BOX	QUANTITY

THIS DRAWING IS A CONTROLLED DOCUMENT.		DWN	STE TE Connectivity		
DIMENSIONS: MM		CHK			
TOLERANCES UNLESS OTHERWISE SPECIFIED:		APVD	MODULAR JACK, RJ45+RJ11 DIP TYPE		
0 PLC ± -		PRODUCT SPEC	SIZE		RESTRICTED TO
1 PLC ± -		APPLICATION SPEC	CAGE CODE		-
2 PLC ± -		WEIGHT	DRAWING NO		
3 PLC ± -			A3		
4 PLC ± -			C=2041120		
ANGLES ± -			SCALE		SHEET 3 of 3
FINISH		CUSTOMER DRAWING		REV B	

单击下面可查看定价，库存，交付和生命周期等信息

[>>TE Connectivity\(泰科\)](#)