

THIS DRAWING IS UNPUBLISHED. RELEASED FOR PUBLICATION  
 © COPYRIGHT BY TYCO ELECTRONICS CORPORATION. ALL RIGHTS RESERVED.

|     |      |           |     |             |        |     |      |
|-----|------|-----------|-----|-------------|--------|-----|------|
| LOC | DIST | REVISIONS |     |             |        |     |      |
| GP  | 00   | P         | LTR | DESCRIPTION | DATE   | DWN | APVD |
|     |      |           | A   | NEW RELEASE | 5MAR07 | RG  | DO   |

1. PART NUMBER CHANGES AND/OR DESIGN CHANGES AFFECTING ITEM INTERCHANGEABILITY REQUIRE PRIOR TYCO APPROVAL AND AUTHORIZATION BY REVISION TO THIS DRAWING.

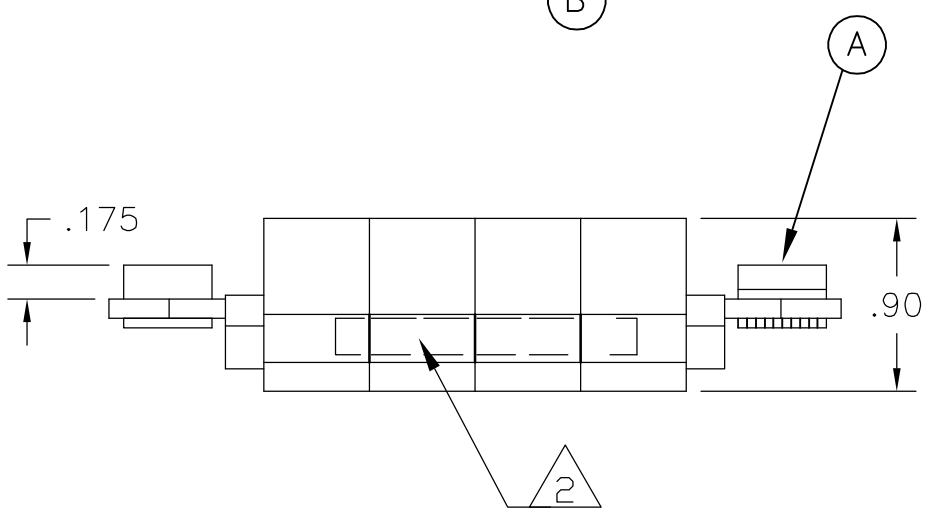
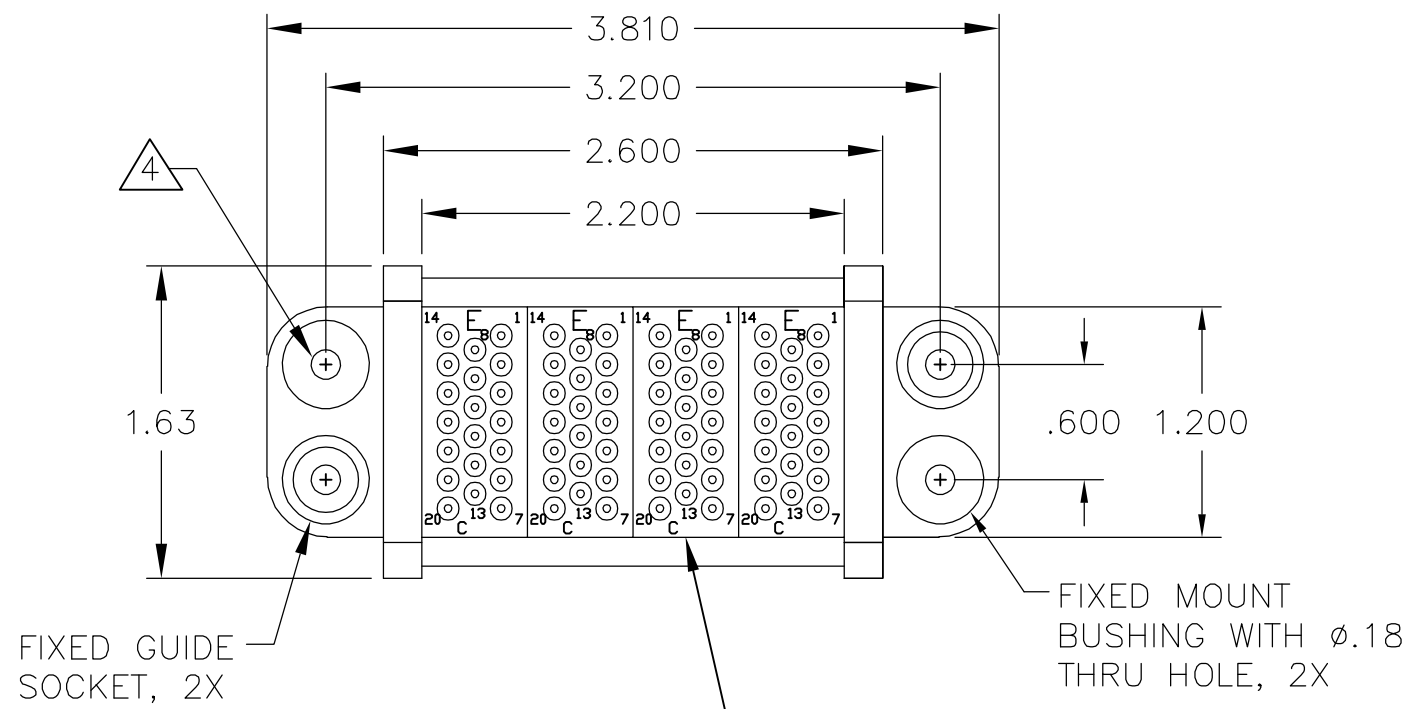
2. ITEMS PROVIDED TO THIS SPECIFICATION TO BE PERMANENTLY IDENTIFIED PER THE FOLLOWING IDENTIFIER:

YEAR WEEK  
 TYCO PART NUMBER DATE CODE (e.g. 0212)  
 XXXXXXX-X XXXX

3. MODULES NOTED ARE CRIMP REMOVABLE STYLE. REMOVABLE CONTACTS (ITEM C) WILL BE PACKAGED AND SHIPPED LOOSE WITH THE CONNECTOR ASSEMBLY.

4. MOUNTING FLANGE BUSHINGS ACCEPT 6/32 SCREW (.156 DIA. CLEARANCE HOLE, FLOAT MOUNT) OR 8/32 SCREW (.173 DIA. CLEARANCE HOLE, FLOAT MOUNT), USER SUPPLIED.

5. THIS CONNECTOR MATES WITH PIN CONN. TYCO PN 6646166-1

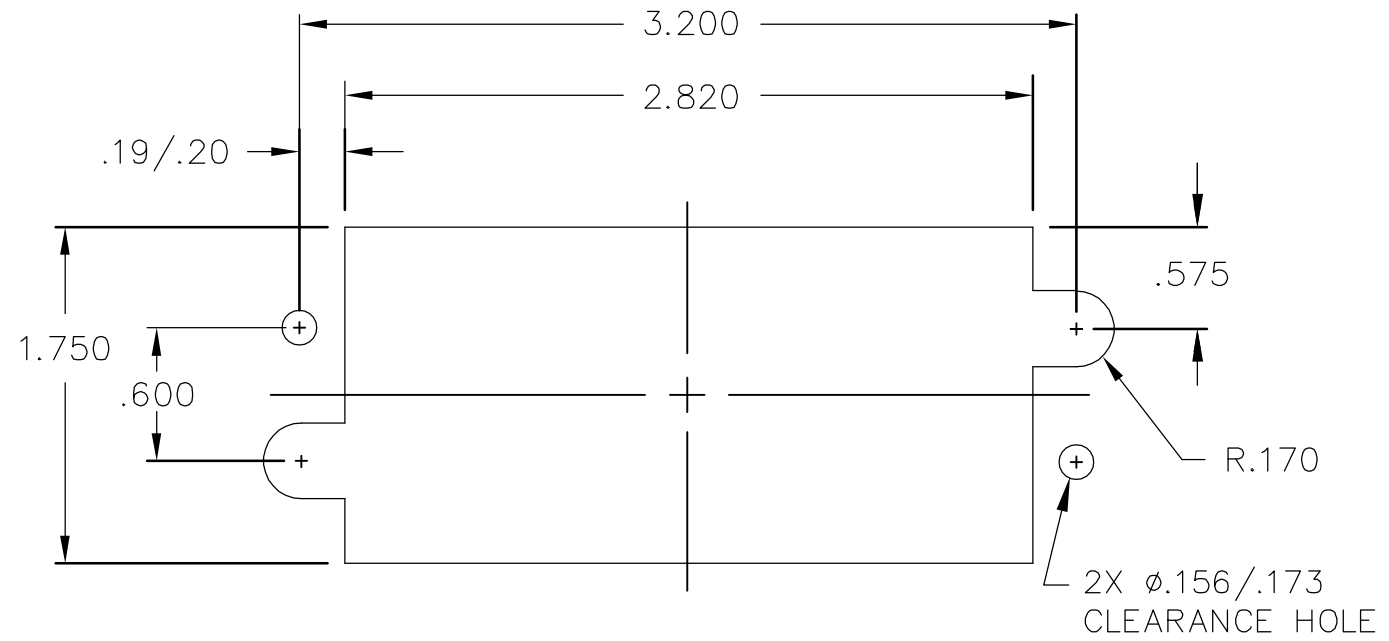


|   |    |             |                                 |      |
|---|----|-------------|---------------------------------|------|
| 3 | 80 | 1648325-1   | SOCKET CONTACT, SIZE #20, CRIMP | C    |
|   | 4  | 1648468-1   | MODULE C                        | B    |
|   | 2  | 6648263-1   | END CAP, FIXED                  | A    |
|   | -1 | PART NUMBER | DESCRIPTION                     | ITEM |

|  |  |                                  |   |           |
|--|--|----------------------------------|---|-----------|
| THIS DRAWING IS A CONTROLLED DOCUMENT. |  | DWN<br>R.GRZYBOWSKI<br>05MAR2007 | Tyco Electronics Corporation<br>Harrisburg, PA 17105-3608 |           |
| DIMENSIONS:<br>INCHES                  |  | CHK<br>D.ORRIS<br>5MAR07         | NAME<br>S.FLICKINGER<br>5MAR07                            |           |
| TOLERANCES UNLESS OTHERWISE SPECIFIED: |  | PRODUCT SPEC                     | SOCKET CONNECTOR<br>DOMINO<br>W/ PANEL CUT-OUT            |           |
| 0 PLC ± -                              |  | APPLICATION SPEC                 | SIZE  | CAGE CODE |
| 1 PLC ± -                              |  |                                  | A3  | 00779     |
| 2 PLC ± .02                            |  | WEIGHT                           | DRAWING NO  |           |
| 3 PLC ± .010                           |  |                                  | C-6646167   |           |
| 4 PLC ± -                              |  |                                  | RESTRICTED TO   |           |
| ANGLES ± 5                             |  |                                  |   |           |
| FINISH                                 |  | CUSTOMER DRAWING                 |   |           |
| -                                      |  | SCALE                            | SHEET   | REV       |
|  |  | 1:1                              | 1 OF 2  | A         |

THIS DRAWING IS UNPUBLISHED. RELEASED FOR PUBLICATION  
 © COPYRIGHT BY TYCO ELECTRONICS CORPORATION. ALL RIGHTS RESERVED.

| LOC | DIST | REVISIONS   |      |     |      |
|-----|------|-------------|------|-----|------|
| P   | LTR  | DESCRIPTION | DATE | DWN | APVD |
| GP  | 00   | SEE SHEET 1 | -    | -   | -    |



SOCKET PANEL MOUNT CUTOUT  
 SCALE: NONE

|  |  |                                  |   |            |               |
|--|--|----------------------------------|---|------------|---------------|
| THIS DRAWING IS A CONTROLLED DOCUMENT. |  | DWN<br>R.GRZYBOWSKI<br>05MAR2007 | Tyco Electronics Corporation<br>Harrisburg, PA 17105-3608 |            |               |
| DIMENSIONS:<br>INCHES                  | TOLERANCES UNLESS OTHERWISE SPECIFIED: | CHK<br>D.ORRIS<br>5MAR07         | NAME  |            |               |
|  | 0 PLC ± -                              | APVD<br>S.FLICKINGER<br>5MAR07   | SOCKET CONNECTOR<br>DOMINO<br>W/ PANEL CUT-OUT            |            |               |
|  | 1 PLC ± -                              | PRODUCT SPEC                     | SIZE  |            |               |
|  | 2 PLC ± .02                            | APPLICATION SPEC                 | CAGE CODE   | DRAWING NO | RESTRICTED TO |
|  | 3 PLC ± .010                           |                                  | A3  | 00779      | C-6646167     |
|  | 4 PLC ± -                              | WEIGHT                           | -   |            |               |
|  | ANGLES ± 5                             |                                  | CUSTOMER DRAWING  |            |               |
| MATERIAL                               | FINISH                                 |                                  | SCALE   | SHEET      | REV           |
| -                                      | -                                      |                                  | 1:1   | 2 OF 2     | A             |

单击下面可查看定价，库存，交付和生命周期等信息

[>>TE Connectivity\(泰科\)](#)