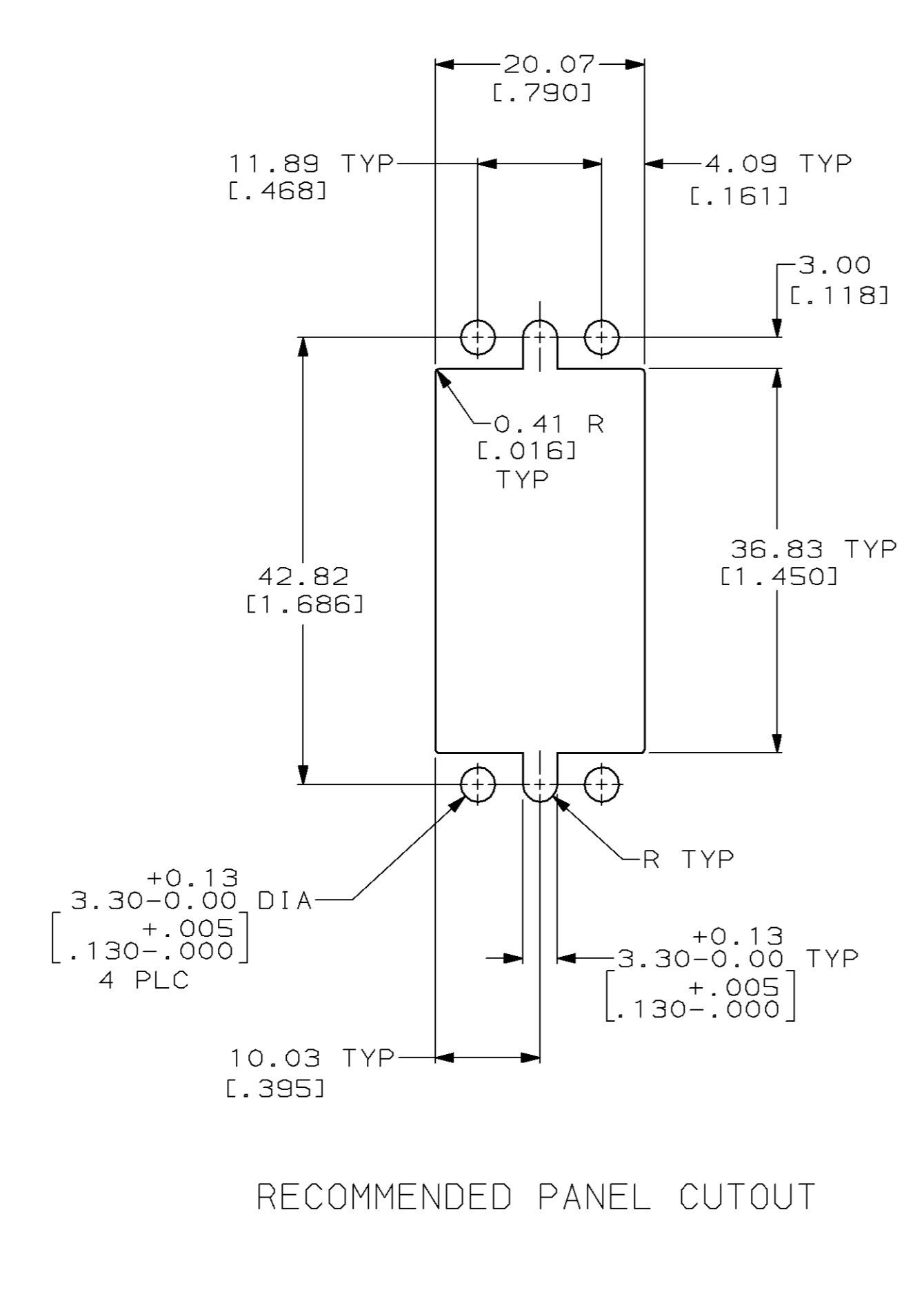
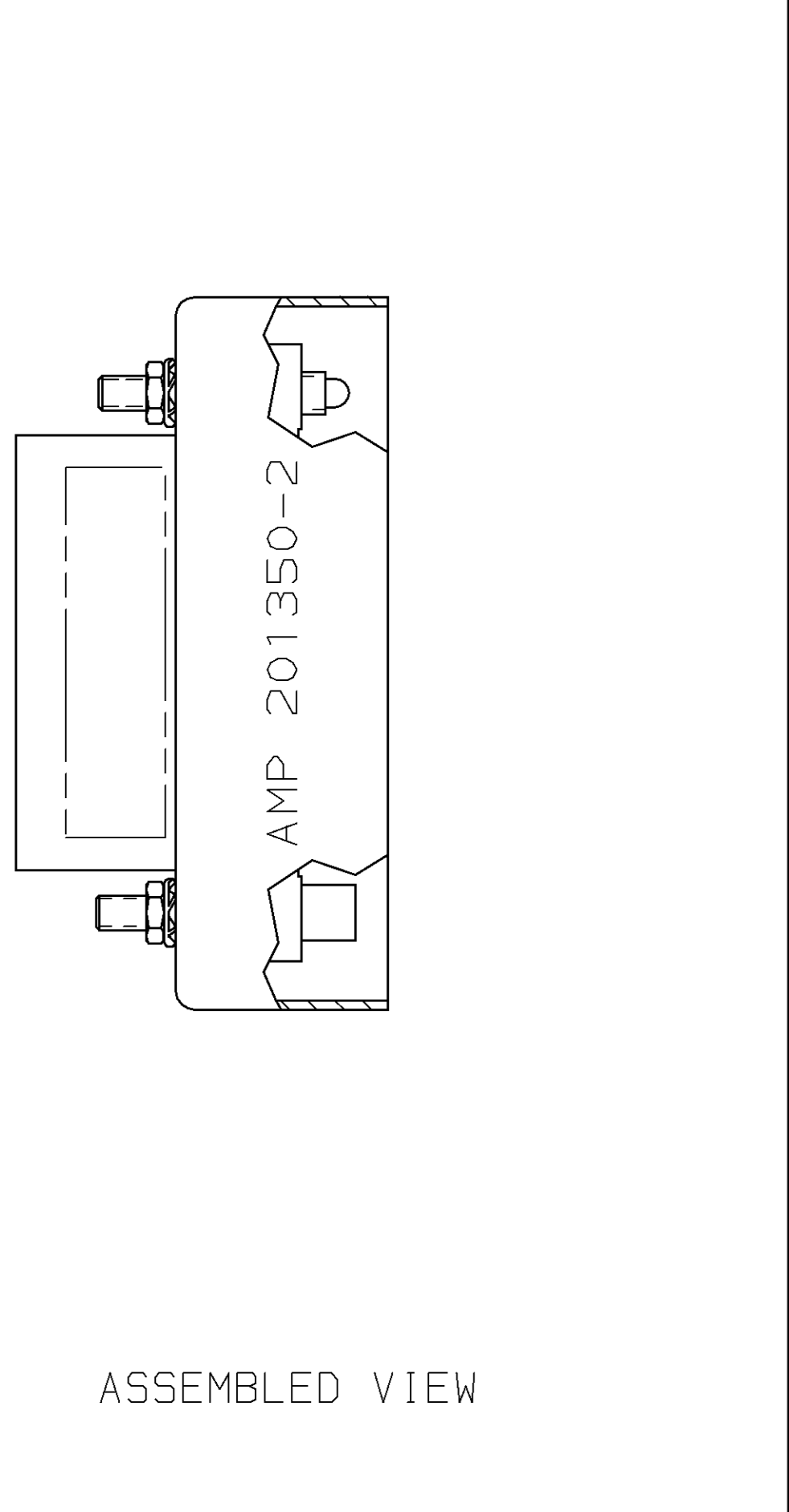
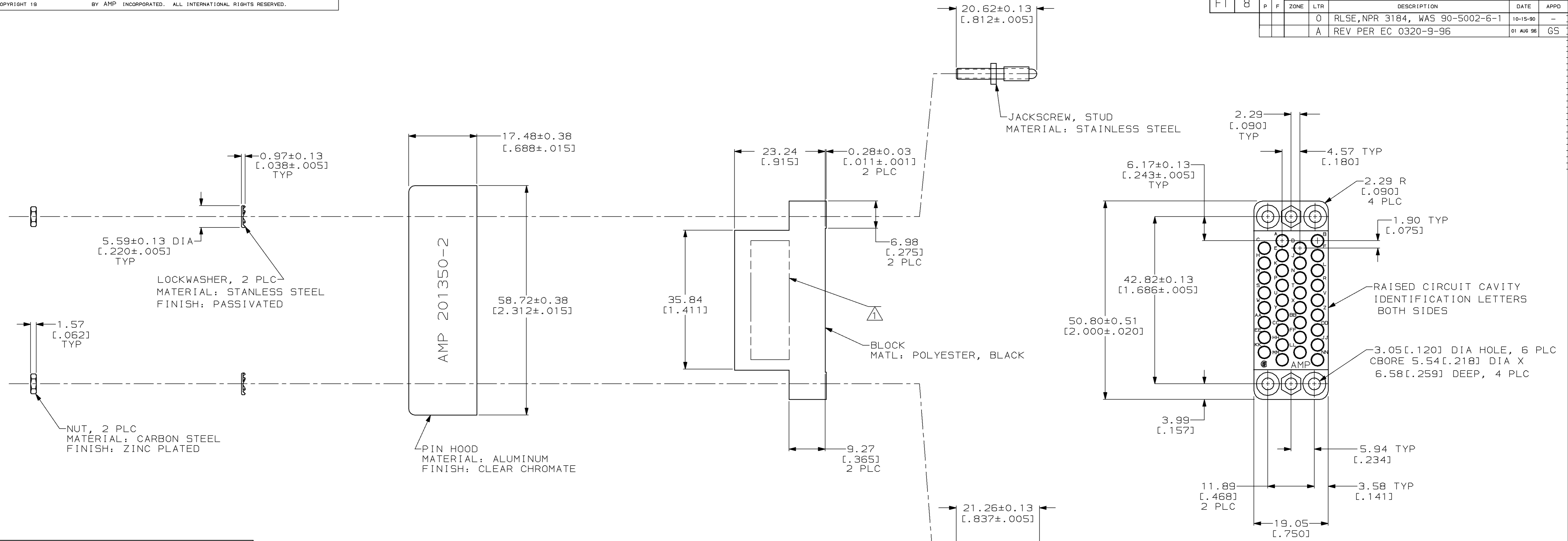


LOC		DIST		REV		REVISIONS		
FT	8	P	F	ZONE	LTR	DESCRIPTION	DATE	APPD
						0 RLSE,NPR 3184, WAS 90-5002-6-1	10-15-90	-
						A REV PER EC 0320-9-96	01 AUG 96	GS



AMP, 213802-1, AND DATE CODE INK STAMPED ON EITHER SIDE, EITHER ORIENTATION.

DO NOT SCALE PRINT. UNLESS SPECIFIED DIMENSIONS IN mm [INCHES]		DR 10-15-90 J McCLINTON		213624-1 PART NO	
TOLERANCES ON:		CHK 10-18-90 R. STONE		AMP Incorporated Harrisburg, PA 17105-3608	
2 PLC DEC ± 0.25 (.010)		APPD 10-18-90 G. BOULLIANNE		NAME	
3 PLC DEC ± -		APPD 10-18-90 W. PARKER		CONNECTOR KIT, UNASSEMBLED, M SERIES	
ANGLES ± -		PRODUCT SPEC -		SIZE	
MATERIAL		APPLICATION SPEC -		CAGE CODE	
SEE CALLOUTS		-		00779	
FINISH		WEIGHT -		DRAWING NO	
SEE CALLOUTS		-		213624	
SCALE		2:1		SHEET	
-		-		1 OF 1	

单击下面可查看定价，库存，交付和生命周期等信息

[>>TE Connectivity\(泰科\)](#)