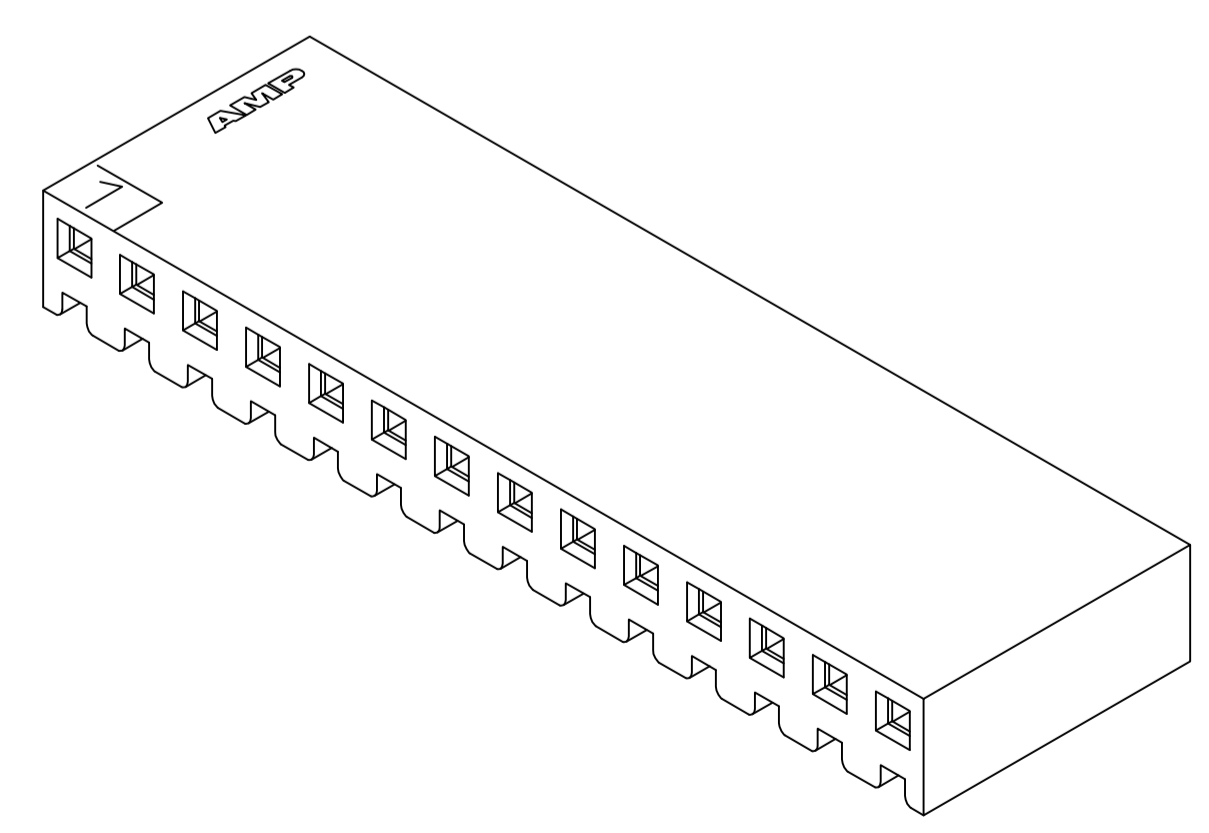
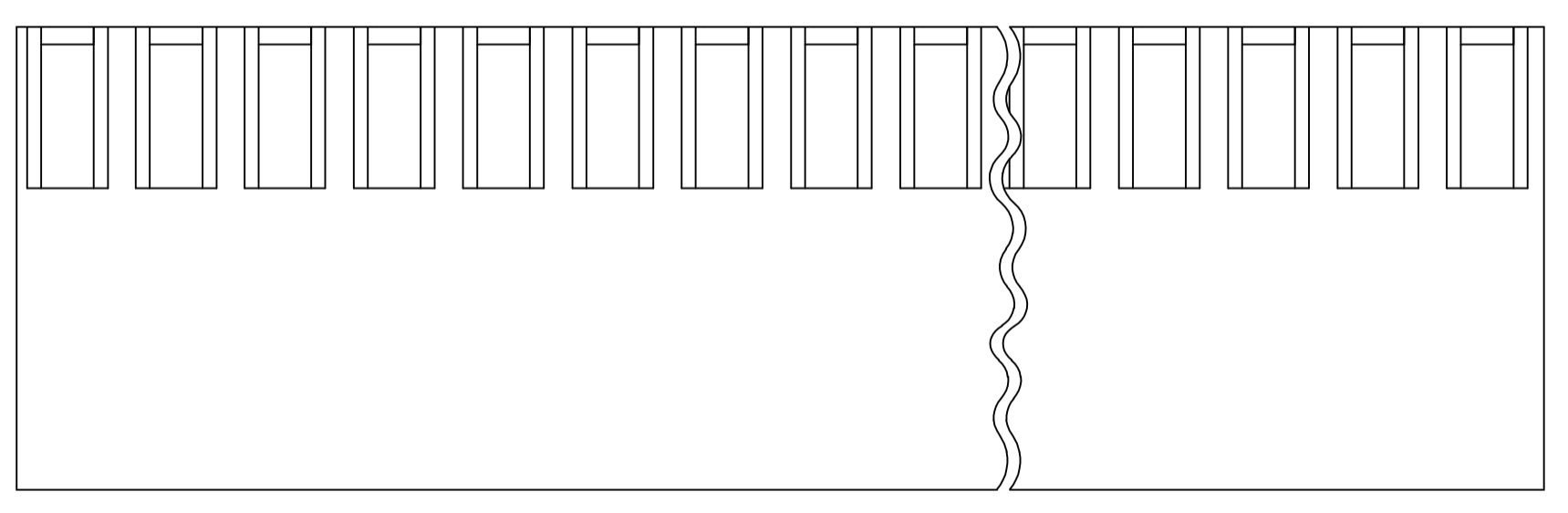
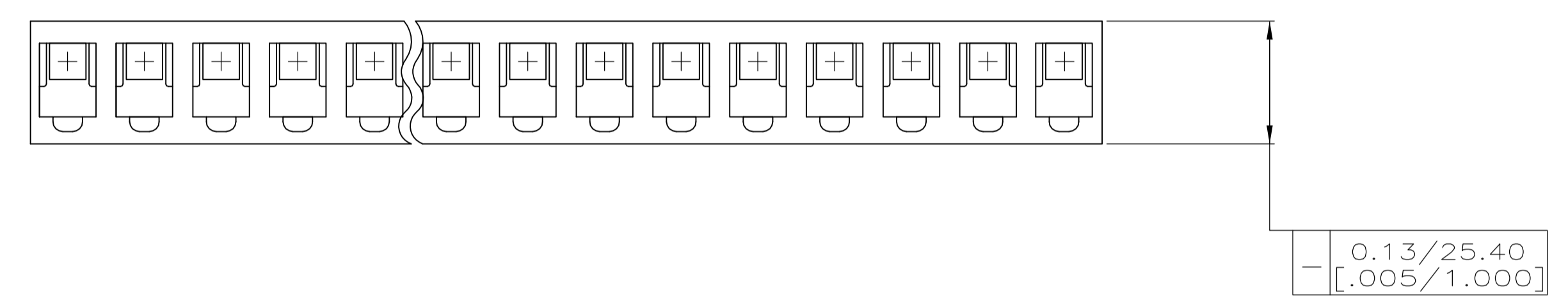
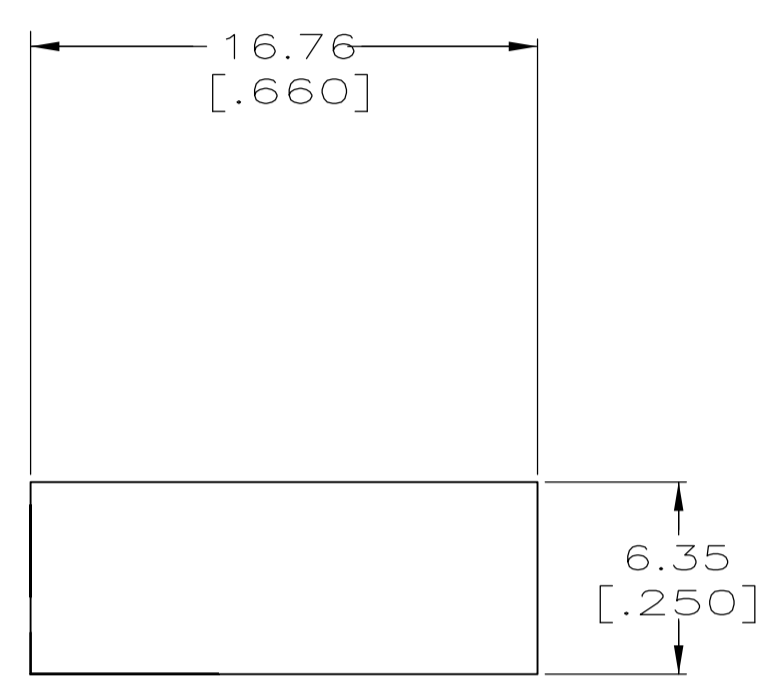
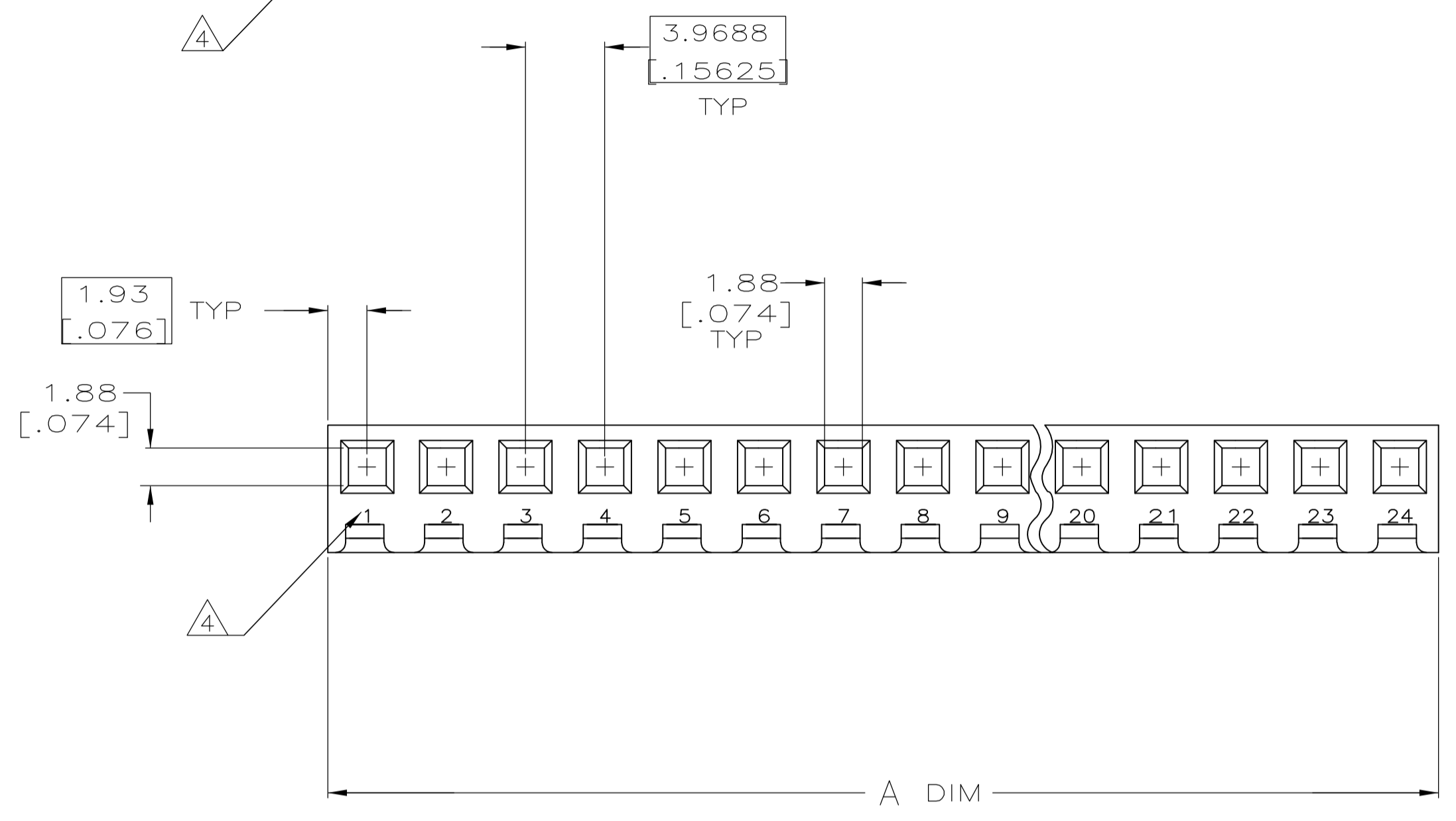


- 1 UNIT ACCEPTS 1.14 [.045] SQUARE OR ROUND POST.
- 2 PREFERRED SL-156 CONTACTS FOR USE WITH THIS UNIT ARE 350980, 640252, 640706, 640707, 641550 AND 770258 (ALL DASH NUMBERS).
- 3 UNIT ACCEPTS KEYING PLUG 640254-1 AND KEYING PIN 640255-1.
- 4 CIRCUIT I.D. NUMBER(S) TO BE LOCATED SEQUENTIALLY AS SHOWN OR ONLY NO. 1 CIRCUIT PLACED ON TOP OF HOUSING.
- 5 DIMENSIONS IN BRACKETS ARE IN INCHES.



3-DIMENSIONAL MODEL NTS

95.15	[3.746]	24	2-770598-4
79.27	[3.121]	20	2-770598-0
75.31	[2.965]	19	1-770598-9
67.36	[2.652]	17	1-770598-7
59.44	[2.340]	15	1-770598-5
55.45	[2.183]	14	1-770598-4
47.52	[1.871]	12	1-770598-2
43.54	[1.714]	11	1-770598-1
35.61	[1.402]	9	770598-9
31.65	[1.246]	8	770598-8
27.69	[1.090]	7	770598-7
19.74	[.777]	5	770598-5
15.77	[.621]	4	770598-4
A ±0.25 [.010]		NO. OF CIRCUITS	PART NUMBER

THIS DRAWING IS A CONTROLLED DOCUMENT.		DIN 9-16-92		K. SALMON	
DIMENSIONS: mm [INCHES]		TOLERANCES UNLESS OTHERWISE SPECIFIED:		CHK 9-16-92	
0. PLC ± -		1. PLC ± -		R. SWING	
1. PLC ± -		2. PLC ± -		E. BEILES 10-1-92	
2. PLC ± -		3. PLC ± 0.13 [.005]		NAME	
3. PLC ± -		4. PLC ± -		PRODUCT SPEC	
4. PLC ± -		ANGLES ± -		APPLICATION SPEC	
MATERIAL NYLON,UL 94V-0 NATURAL		FINISH -		SIZE	
		WEIGHT -		CAGE CODE	
		CUSTOMER DRAWING		DRAWING NO. A1 00779	
		SCALE 4:1		DRAWING NO. C=770598	
		SHEET 1 OF 1		RESTRICTED TO	
		REV M			

单击下面可查看定价，库存，交付和生命周期等信息

[>>TE Connectivity\(泰科\)](#)