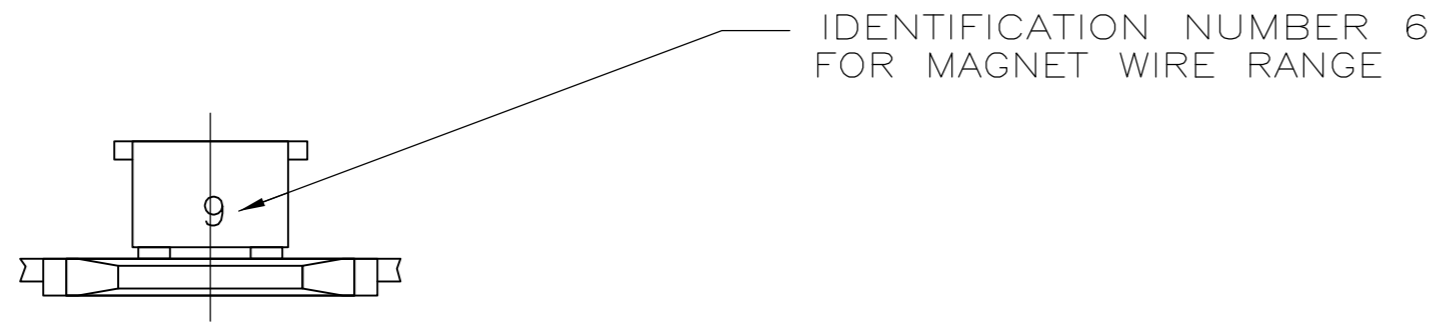


THIS DRAWING IS UNPUBLISHED. RELEASED FOR PUBLICATION
 © COPYRIGHT - By - ALL RIGHTS RESERVED.

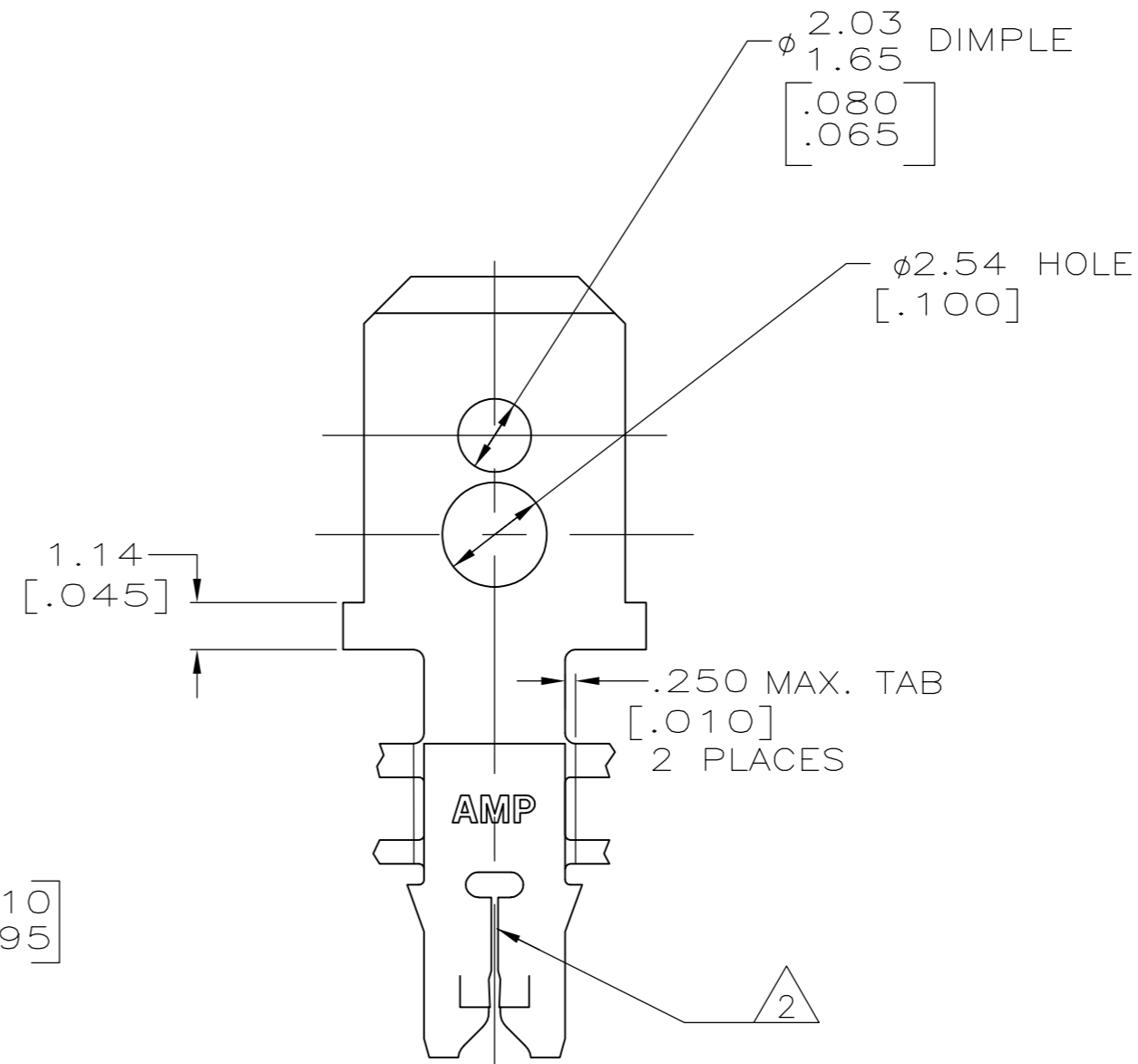
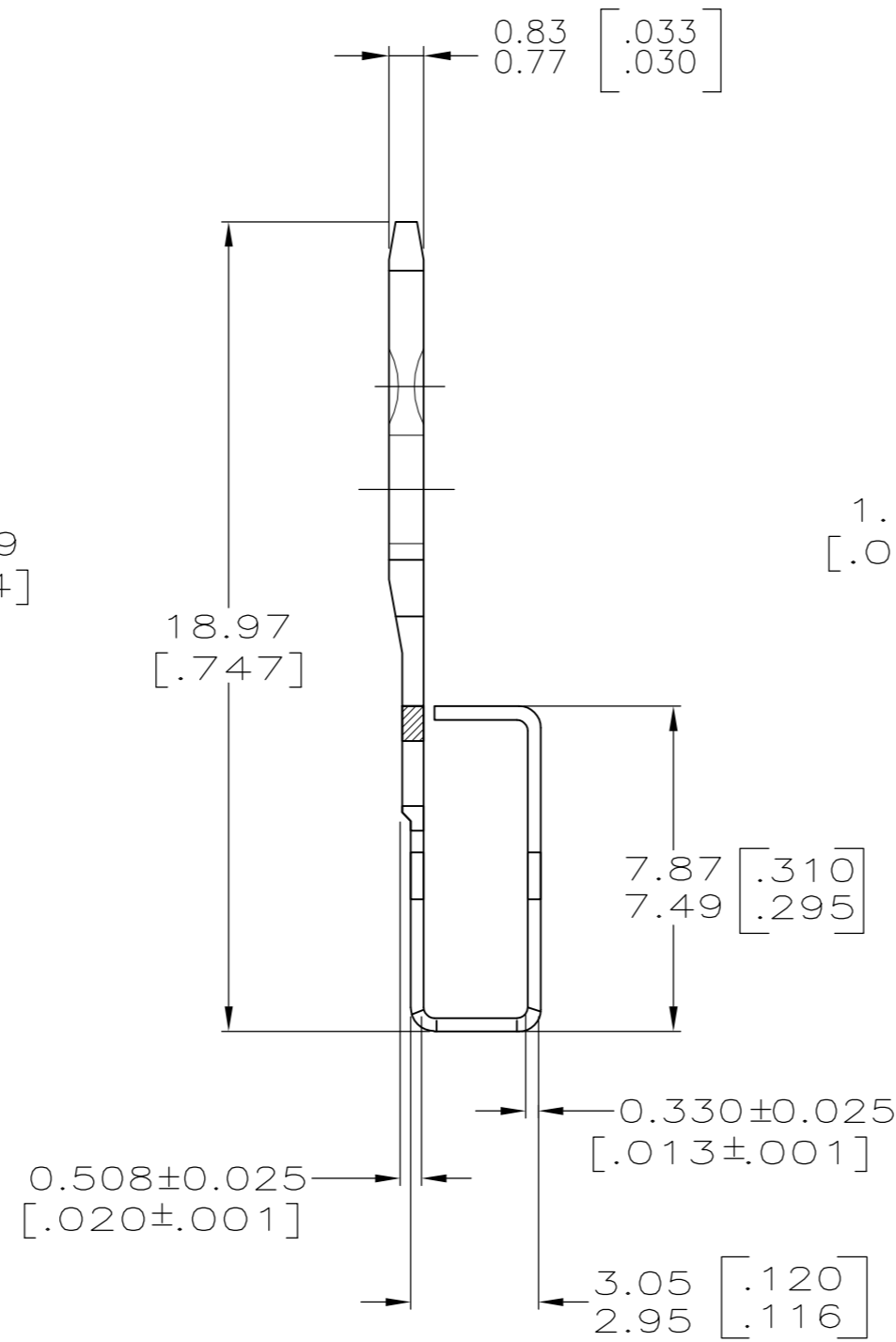
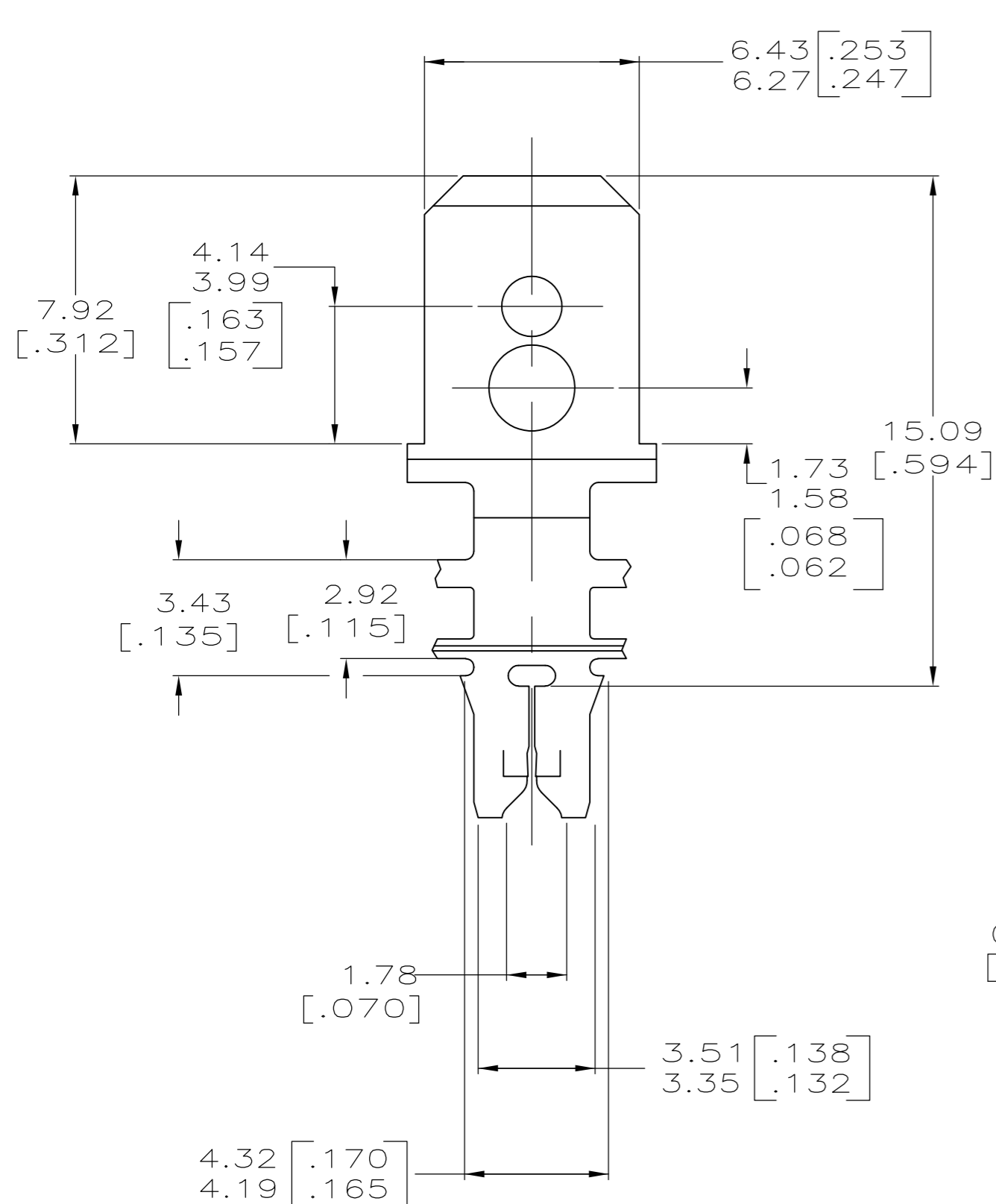
LOC		DIST		REVISIONS			
P	LTR	DESCRIPTION		DATE	DWN	APVD	
AF	50	D1	ECR-15-005665	10AUG2015	BDA	PKS	



1 CONTINUOUS STRIP ON REELS WITH TERMINALS LOCATED ON 8.38 ± 0.08 [.330 ± .003] CENTERS.

2 SLOT TERMINATES EITHER A SINGLE OR DOUBLE MAGNET WIRE OF THE SAME TYPE AND SIZE, COPPER RANGE; 0.25–0.36mm [#30–#27] AWG. ALUMINUM RANGE: 0.32–0.45mm [#28–#25] AWG. ALUMINUM WIRE RANGE APPLIES FOR POST-TIN PLATED VERSIONS ONLY.

3 AFTER INSERTION INTO PLASTIC HOLDER, TAB PORTION MUST BE BENT OVER 45° TO 90° OR POTTED-IN TO PREVENT PULL-OUT WHEN MATING RECEPTACLE IS DISCONNECTED.



63328-1
PART NUMBER

THIS DRAWING IS A CONTROLLED DOCUMENT.		DWN	R.GRZYBOWSKI	1MAY96												
DIMENSIONS:		CHK	M.S.FEHER	1MAY96												
mm [INCHES]		APVD	G.PORTA	1MAY96												
TOLERANCES UNLESS OTHERWISE SPECIFIED:		PRODUCT SPEC	108-2012	APPLICATION SPEC				114-2046								
0 PLC ± -		MATERIAL		082 PRE-MILLED BRASS	FINISH	.002032[.000080] MIN TIN PER MIL-T-01727	WEIGHT	-	SIZE	A2	CAGE CODE	00779	DRAWING NO	C=63328	RESTRICTED TO	-
1 PLC ± -		CUSTOMER DRAWING		SCALE		6:1	SHEET	1 of 1	REV	D1						
2 PLC ± 0.25[.010]																
3 PLC ± -																
4 PLC ± -																
ANGLES ± -																

单击下面可查看定价，库存，交付和生命周期等信息

[>>TE Connectivity\(泰科\)](#)