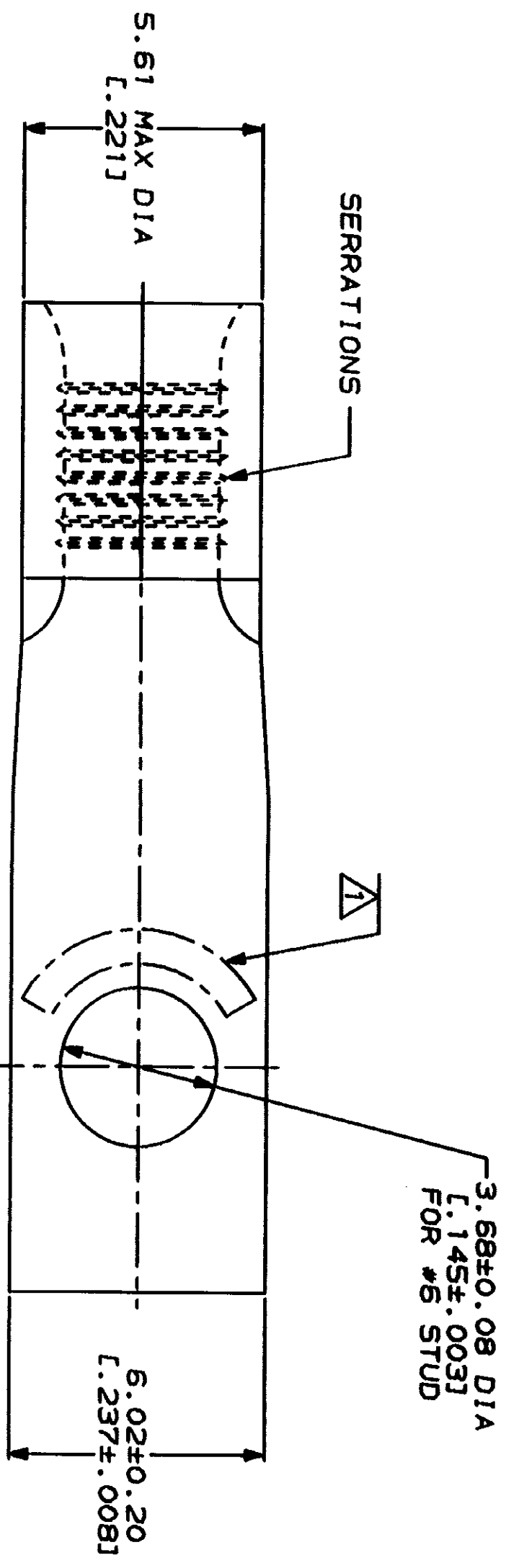


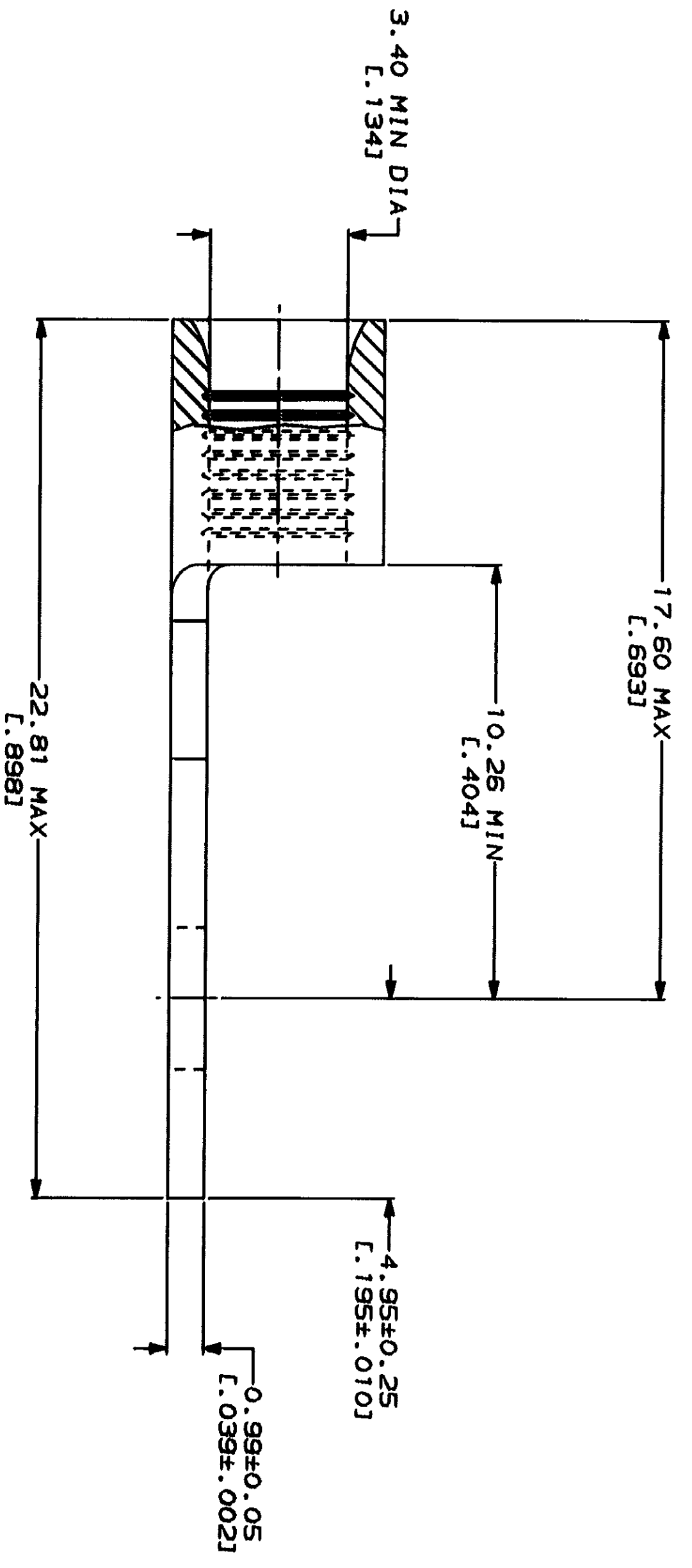
LOC	DATE	REVISIONS	DESCRIPTION	DATE	APPD
G	14	A	REVISED PER 0720-0230-93		

METPRIO
DIMENSIONS LISTED IN mm [INCHES]



WIRE RANGE	AMP	UL E13288 Listed
12-10 AWG STRANDED		
12-10 AWG STRANDED		
NOT CERTIFIED	LR7189 Certified	MILITARY P/N AND CLASS
		NOT APPLICABLE

△ STAMP AMP 12-10* APPROX AS SHOWN



AMP INCORPORATED
CUSTOMER SERVICE SYSTEMS

FOR ADDITIONAL PRODUCT INFORMATION OR COPIES OF DRAWINGS AND TECHNICAL DOCUMENTS
1-800-522-6752
FOR APPLICATION TOOLING ASSISTANCE CENTER
1-800-722-1111
FOR ORDER ENTRY
1-800-526-5142

MAX RECOMMENDED OPERATING TEMPERATURE:
170°C MAX

VOLTAGE RATING:
NOT APPLICABLE
WIRE CROSS SECTIONAL AREA RANGE:
2.62-6.64mm² [S. 180-13, 100] CIR MILS STRANDED

DO NOT SCALE PRINT. UNLESS SPECIFIED DIMENSIONS IN mm - DIMENSIONS IN INCHES - TOLERANCES ON: 1. PLC DEC ± . 2. PLC DEC ± . 3. PLC DEC ± . ANGLES

FINISH: TIN PLATE
0.00254[L. 000100] MIN THK PER MIL-T-10727

DR 1-28-93 TA BRIKMAN
CHK 1-28-93 DA PATTERSON
APPD 1-28-93 DE MILLER
APPD 1-28-93 JL HECKLEY

APPLICATION SPEC

AMP Incorporated
Harrisburg, PA 17105-3508

TERMINAL, RECTANGULAR TONGUE, BUDGET
SIZE: 00779
CASE CODE: 00779
DRAWING NO: 327959
SCALE: 8:1
SHEET: 1 OF 1

CUSTOMER DRAWING

单击下面可查看定价，库存，交付和生命周期等信息

[>>TE Connectivity\(泰科\)](#)