

4

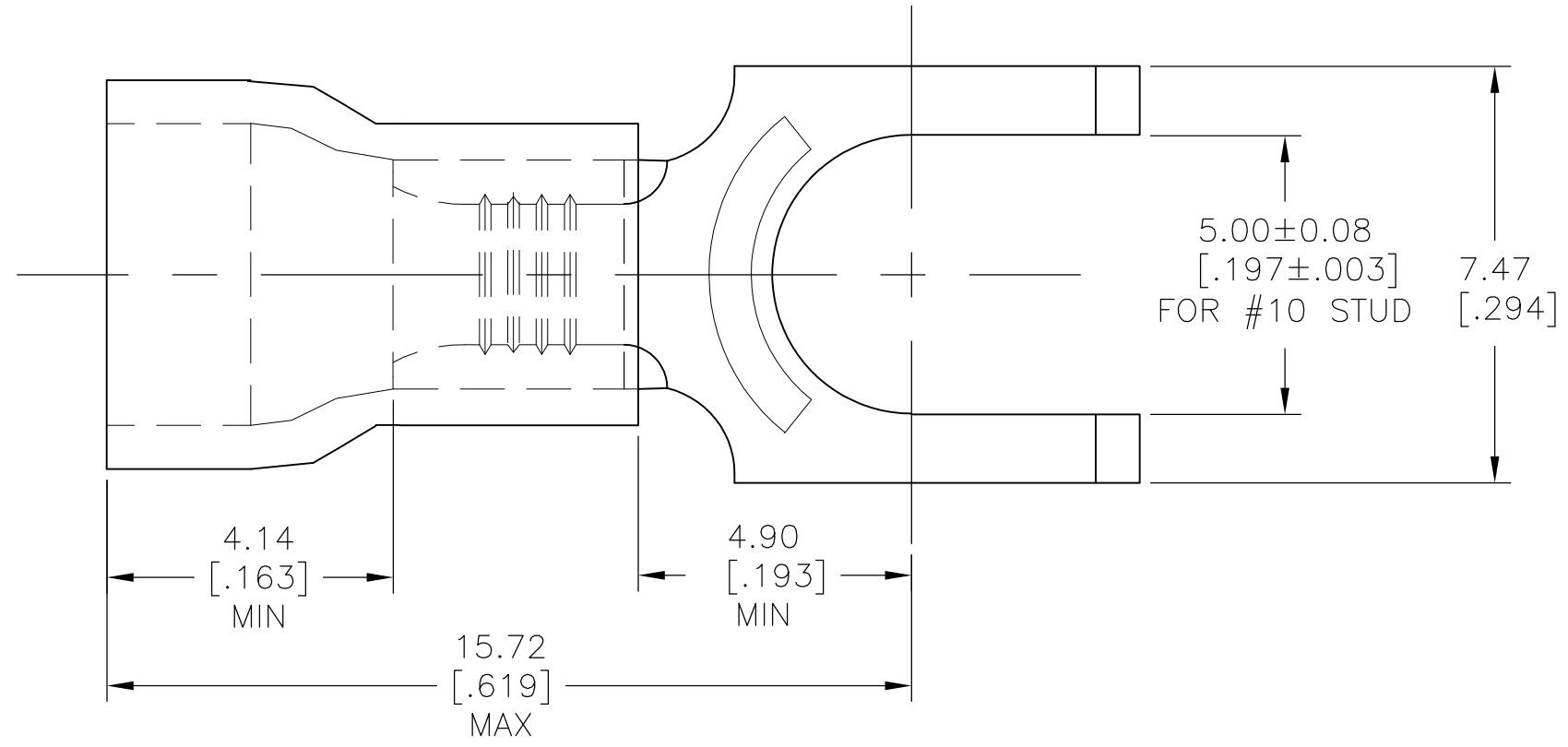
3

2

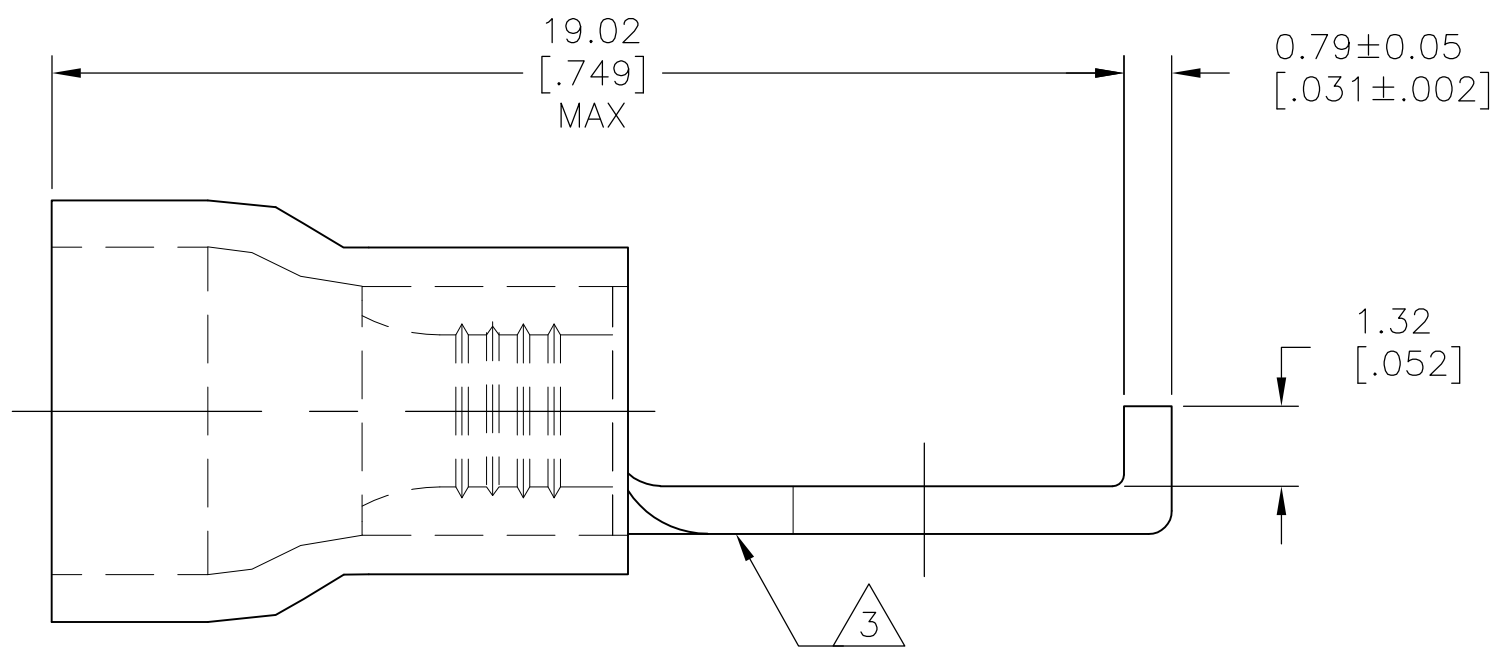
1

THIS DRAWING IS UNPUBLISHED. RELEASED FOR PUBLICATION
 © COPYRIGHT - By - ALL RIGHTS RESERVED.

LOC	DIST	REVISIONS					
		P	LTR	DESCRIPTION	DATE	DWN	APVD
-	-		G1	REDRAWN PER ECO-12-019442	06NOV12	KH	DR



- 1 MATERIAL: COPPER PER ASTM B152
INSULATION: PVC
- 2 FINISH: TIN PLATED PER ASTM B545
INSULATION: COLOR: BLUE
- 3 STAMP AMP 16-14* APPROX AS SHOWN
- 4 WIRE INSULATION DIAMETER
4.95[.195] MAX



160213
PART NUMBER

AMP INCORPORATED CUSTOMER SERVICE SYSTEMS	
FOR ADDITIONAL PRODUCT INFORMATION OR COPIES OF DRAWINGS AND TECHNICAL DOCUMENTS	PRODUCT INFORMATION CENTER 1-800-522-6752
FOR APPLICATION TOOLING INFORMATION	TOOLING ASSISTANCE CENTER 1-800-722-1111
FOR ORDER ENTRY	1-800-526-5142

MAX RECOMMENDED OPERATING TEMPERATURE: 343°C [649°F]
VOLTAGE RATING: N/A
CIRCULAR MILL AREA: 1.04-2.62mm ² [2,050-5,180] SOLID OR STRANDED

THIS DRAWING IS A CONTROLLED DOCUMENT.	
DIMENSIONS: mm [INCHES]	TOLERANCES UNLESS OTHERWISE SPECIFIED:
	0 PLC ± -
	1 PLC ± -
	2 PLC ± -
	3 PLC ± 0.20[.008]
	4 PLC ± -
	ANGLES ± -
MATERIAL	FINISH
1	2

DWN	06NOV12
KIRAN HOLAL	
CHK	06NOV12
ROHDE DANIEL	
APVD	06NOV12
ROHDE DANIEL	
PRODUCT SPEC	
APPLICATION SPEC	
WEIGHT	-

TE Connectivity			
NAME TERMINAL PLASTI GRIP RECTANGULAR TONGUE(SLOTTED), WIRE SIZE 16-14			
SIZE	CAGE CODE	DRAWING NO	RESTRICTED TO
A3	00779	C-160213	-
CUSTOMER DRAWING		SCALE	SHEET
		8:1	1 OF 1
		REV	G1

单击下面可查看定价，库存，交付和生命周期等信息

[>>TE Connectivity\(泰科\)](#)