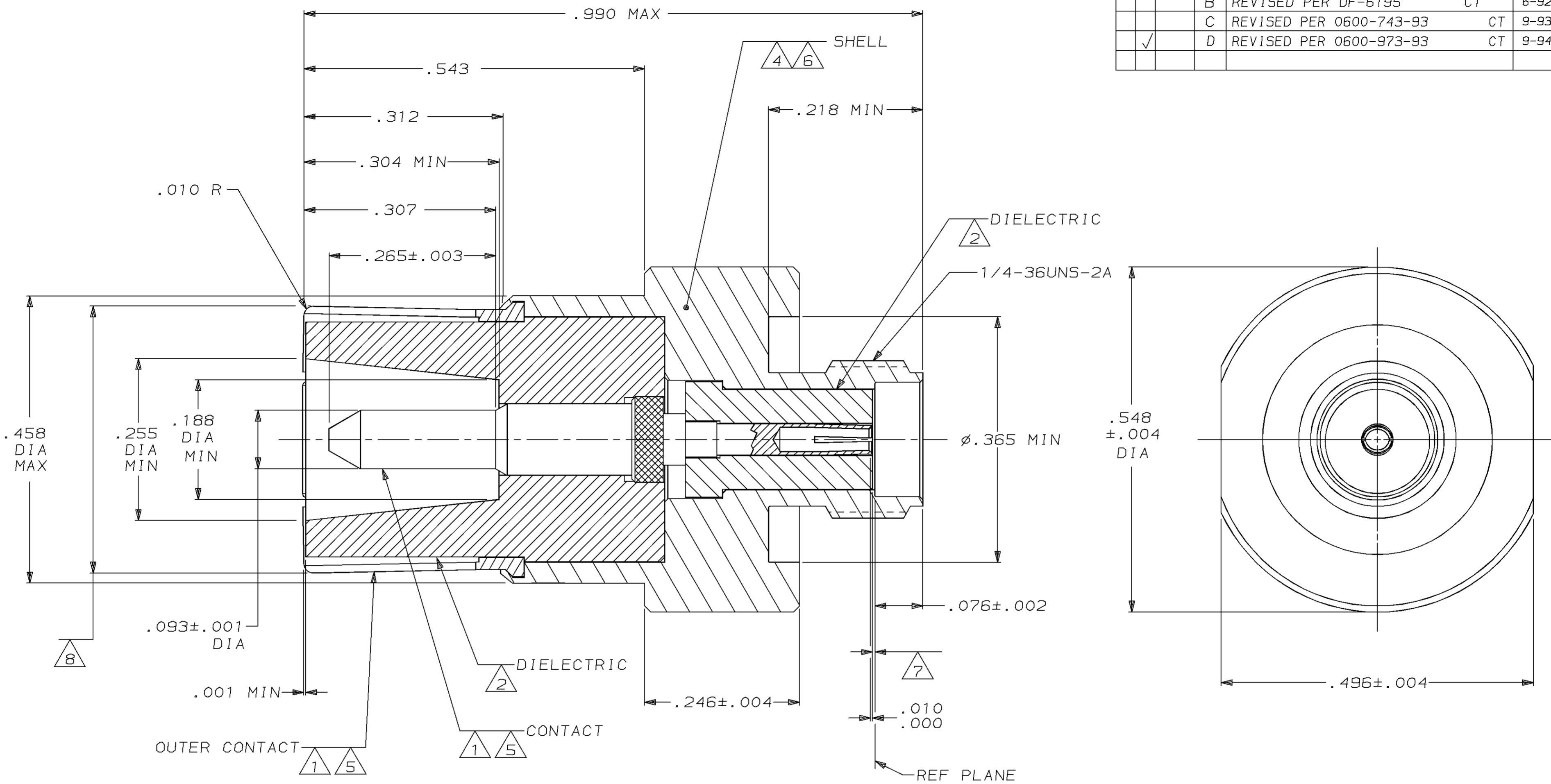


THIS DRAWING IS UNPUBLISHED. RELEASED FOR PUBLICATION ,19 .
 © COPYRIGHT 19 BY AMP INCORPORATED. ALL INTERNATIONAL RIGHTS RESERVED.

PROD CODE	LOC	DIST	P	F	ZONE	LTR	DESCRIPTION	DATE	APPD
3313	DF	XO					NPR 90-0063 WAS 89-3321-004	2-9-90	PY
							REVISED PER DF4725	4-12-91	RCH
							REVISED PER DF-6195 CT	6-92	BS
							REVISED PER 0600-743-93 CT	9-93	CS
							REVISED PER 0600-973-93 CT	9-94	JC



- 1 BERYLLIUM COPPER PER ASTM-B-196
- 2 PTFE PER ASTM-D-1710
- ~~3 BRASS PER QQ-B-626~~
- 4 STAINLESS STEEL PER ASTM-A-582
- 5 GOLD PL PER MIL-G-45204
- 6 PASSIVATED PER QQ-P-35
- 7 DIELECTRIC, MAX PROJECTION .002, .010 MAX RECESSION
- 8 FLARE TO MEET OUTER CONTACT GAGE TEST PER MIL-C-39012/15

DO NOT SCALE PRINT. UNLESS SPECIFIED DIMENSIONS IN INCHES TOLERANCES ON : 2 PLC DEC ± - 3 PLC DEC ± .005 ANGLES ± -		DR 2-1-90 P. YEAGER		446748-1 PART NO	
MATERIAL 1 THRU 4		CHK 2-2-90 J. CABARLO		AMP AMP INCORPORATED Harrisburg, Pa. 17105	
FINISH 5 6		APPD 2-2-90 J. CABARLO			
APPLICATION SPEC		APPD 2-2-90 P. YEAGER		NAME COAX PIN ADAPTER, SIZE 1 MODIFIED	
WEIGHT -		PRODUCT SPEC -		DRAWING NO 446748	
		SCALE 8:1		FSCM NO 00779	
				SHEET 1 OF 1	

CUSTOMER DRAWING

单击下面可查看定价，库存，交付和生命周期等信息

[>>TE Connectivity\(泰科\)](#)