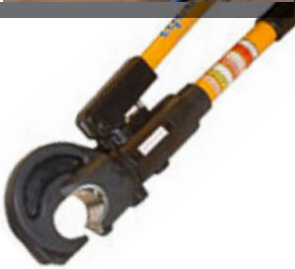




# HYDRAULIC CRIMP TOOLING SOLUTIONS

A Comprehensive Guide to TE Hydraulic Tooling Solutions



# POWER HAND TOOLING

## Hydraulic Powered Crimp Tooling for 10,000 psi

### FAST FACTS

- Industry standard 10,000 psi hydraulic system pumps and crimp heads
- Electric & manual hydraulic pumps for crimping at fixed locations
- 10,000 psi crimp heads compatible with shank dies available for wire sizes requiring a crimp force up to 33 tons
- 10,000 psi crimp heads compatible with U-dies for wire sizes requiring a crimp force up to 14 tons
- U-die crimp head stroke options of 1" and 1.5"
- Hand-held pistol grip tools with rechargeable battery for U-dies
- Portable battery operated hydraulic pump for 10,000 psi crimp heads
- Integrated crimp head/die combinations for crimping #8-2 AWG SOLISTRAND terminals



TE Connectivity's line of quality tooling includes industry-standard 10,000 psi [68,950 kPa] hydraulic tool systems. The basic hydraulic tool system requires a pump, hose (multiple lengths are available with all configurations), crimp head, and crimp die. There is a TE hydraulic pump to meet the demands of any crimping application. For fixed crimping locations, you can choose

between a 110V or 220V Electric Hydraulic Pump (with optional remote hand control), or manual foot and hand hydraulic pumps. For maximum portability, 10,000 psi hand-held pistol grip crimp tools with rechargeable battery are an effective solution. Or, to power a 10,000 psi crimp head at any location, order a portable battery hydraulic unit.

U-dies for a 10,000 psi hydraulic system are well suited for applications requiring a crimp force of up to 14 tons [125 kN]. For wire sizes requiring up to 33 tons [294 kN], TE offers crimp heads for 10,000 psi that are compatible with shank dies.

For a 10,000 psi hydraulic system, there are three medium duty and one heavy duty U-die crimp heads available. U-die crimp heads are available in two types, with 1 in [25 mm] and 1.5 in [38 mm] strokes, respectively. Two 12 ton [101 kN] crimp heads have a 1 in [25 mm] stroke. Two 14 ton [125 kN] crimp heads are for larger products that require a 1.5 in [38 mm] stroke. Four heavy duty crimp heads for shank dies are available for wire sizes requiring between 14 and 33 tons of crimp force.

An integrated head/die for crimping #8 to #2 SOLISTRAND terminals is available. There are also manual hand held hydraulic tools available for both U and shank die sets.

**Note: 10,000 psi hydraulic pumps are not compatible with 8,200 psi crimp heads. 8,200 psi hydraulic pumps are not compatible with 10,000 psi crimp heads.**

[tooling.te.com](http://tooling.te.com)

# POWER HAND TOOLING

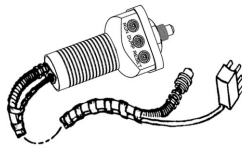
## HYDRAULIC TOOLING SELECTION GUIDE for 10,000 psi

### Hydraulic Pumps, Controls and Hoses

The Heavy-duty Pump is designed for higher crimp cycle frequency.



WITH



OR



AND



Heavy Duty Electric Hydraulic Pump (110V)<sup>1,2</sup> **P/N 1804700-1**  
OR  
Heavy Duty Electric Hydraulic Pump (220V)<sup>1,2</sup> **P/N 1804700-2**  
CM 409-10081

Remote Hand Control<sup>3</sup> (for Heavy-Duty pump) w/hose attached  
**P/N 1901775-1** (7 ft hose)  
**P/N 1901776-1** (15 ft hose)  
**P/N 1901777-1** (21 ft hose)

Remote Foot Control<sup>3</sup> (for Heavy-Duty pump)  
**P/N 68284-1**

Hydraulic Hoses<sup>4</sup> (not required for hand control)  
**P/N 1583662-1** (6 ft)  
**P/N 1583662-2** (10 ft)  
**P/N 1583662-3** (20 ft)

### Heavy-Duty Crimp Heads (Shank Dies)

(> 25,000 cycles)

### Shank Dies



8 - 4/0 AWG  
22 ton output force  
16 lbs  
**P/N 1752877-1**  
IS 408-8956

4/0 AWG - 1000 MCM  
26 ton output force  
29 lbs  
**P/N 1752786-1**  
IS 408-8958

8 - 4/0 AWG  
33 ton output force  
28 lbs  
**P/N 1752787-1**  
IS 408-8914

12-10 AWG - 350 MCM  
18 ton output force  
13 lbs  
**P/N 1752868-1**  
IS 408-8959

PLASTI-GRIP	8 AWG - 4/0 AWG
AMPOWER	6 AWG - 1500 MCM
AMPOWER Quick Disconnect	1/0 AWG - 600 MCM
Insulation Piercing COPALUM	10 AWG (Cu) - 3/0 AWG
Sealed COPALUM	10 AWG - 3/0 AWG
Bar COPALUM	10 AWG (Cu) - 400 MCM
SOLISTRAND	8 AWG - 600 MCM
STRATO-THERM	8 AWG - 2/0 AWG
TERMINYL	1/0 AWG thru 4/0 AWG

### Medium- & Heavy-Duty Crimp Heads & Hand Tools (U-Dies)

### U-Dies



12 ton output force  
1 stroke;  
20,000 cycle  
Light Duty  
Compression Head<sup>2</sup>  
U-Die Compatible  
**P/N 1490745-1**  
IS 408-10111

12 ton output force  
1.5 stroke;  
20,000 cycle  
Light Duty  
Compression Head  
U-Die Compatible  
**P/N 1490746-1**  
IS 408-10112

12 ton output force  
1 stroke Titanium  
Compression Head  
U-Die Compatible  
**P/N 1490747-1**  
IS 408-8715

14 ton output force  
1.5 stroke;  
Heavy-Duty  
Compression Head  
U-Die Compatible  
**P/N 1976230-1**  
IS 408-10145

14 ton output force  
1.5 stroke  
Compression Tool  
U-Die Compatible  
**P/N 1490749-1**  
IS 408-8717

1 stroke Hand  
Compression Tool  
U-Die Compatible  
**P/N 1490748-1**  
IS 408-8716

PLASTI-GRIP	8 AWG - 2 AWG
AMPOWER	6 AWG - 4/0 AWG
SOLISTRAND	8 AWG - 4/0 AWG
TERMINYL	8 AWG - 1/0 AWG

- Powered systems require a pump, hand or foot control, hose, crimp head and die except with **1673672-1**.
- Manual systems require hand tools and the battery hand tool requires only dies.

### SOLISTRAND (Integrated Crimp Dies)



#8-#2 AWG SOLISTRAND  
Compression Head  
(No crimp dies required)  
**P/N 1673672-1**  
IS 408-8910



#8-#2 AWG SOLISTRAND  
Compression Tool  
(No crimp dies required)  
**P/N 59975-1**  
IS 408-6758

tooling.te.com

# POWER HAND TOOLING

## Dies, Hand Tools, and Hydraulic Heads – Configuration Options for 10,000 psi

The TE Connectivity hydraulic crimping tool line offers a wide array of die, hand tool, and hydraulic head configurations. Use the following tables to determine the configuration that best matches your requirements.

### SOLISTRAND Terminals



Hydraulic Crimp Tooling 10,000 psi Operating Pressure						
Wire Size in AWG [mm <sup>2</sup> ]	Hand Tools (U-Die)	Hydraulic Heads (U-Die)	Hydraulic Heads (Shank Die)			
		1490748-1 1490749-1	1490745-1 1490746-1 1490747-1 1976230-1	1673672-1▲	1752868-1	1752788-1
8 [7-8.5]	1490413-1 ** 1490414-1 ○	1490413-1 ** 1490414-1 ○	▲	69216		
6 [13-15]	1490413-2 ** 1490414-2 ○	1490413-2 ** 1490414-2 ○	▲	69217		
4 [21]	1490413-3 ** 1490414-2 ○	1490413-3 ** 1490414-2 ○	▲	69218		
2 [34-35]	1490413-4 ** 1490414-2 ○	1490413-4 ** 1490414-2 ○	▲	45433		
1/0 [50-60]	1490413-5 ** 1490414-3 ○	1490413-5 ** 1490414-3 ○		45436		
2/0 [67-70]	1490413-6 ** 1490414-3 ○	1490413-6 ** 1490414-3 ○		45439		
3/0 [80-95]	1490413-7 ** 1490414-3 ○	1490413-7 ** 1490414-3 ○		45442		
4/0 [100-125]	1490413-8 ** 1490414-3 ○	1490413-8 ** 1490414-3 ○		45445		
250-300 MCM [127-152]					48816	69911
300-350 MCM [152-177]					48817	69912
400 MCM [203]					48818	69913
500-600 MCM [253-304]					48819	69914

**	Stationary die
○	Moving die
▲	Self-Contained die

# POWER HAND TOOLING

## Dies, Hand Tools, and Hydraulic Heads – Configuration Options for 10,000 psi

### Heavy Duty SOLISTRAND Terminals



Wire Size in AWG [mm <sup>2</sup> ]	Hydraulic Crimp Tooling 10,000 psi Operating Pressure	
	Hand Tools (U-Die)	Hydraulic Heads (U-Die)
		1490748-1 1490749-1
8 [7-8.5]	1490413-9* 1490413-2 ○	1490413-9 * 1490414-2 ○
6 [13-15]	1-1490413-0 * 1490414-2 ○	1-1490413-0 * 1490414-2 ○
4 [21]	1-1490413-1 * 1490414-2 ○	1-1490413-1 * 1490414-2 ○
2 [34-35]	1-1490413-2 * 1490414-3 ○	1-1490413-2 * 1490414-3 ○
1/0 [50-60]	1-1490413-3 * 1490414-3 ○	1-1490413-3 * 1490414-3 ○

### SOLISTRAND Flag Terminals



Wire Size in AWG [mm <sup>2</sup> ]	Hydraulic Crimp Tooling 10,000 psi Operating Pressure	
	Hand Tools (U-Die)	Hydraulic Heads (U-Die)
		1490749-1
8 [7-8.5]	1752680-8 * 1752681-2 ○	1752680-8 * 1752681-2 ○
6 [13-15]	1752680-7 * 1752681-3 ○	1752680-7 * 1752681-3 ○
4 [21]	1752680-6 * 1752681-3 ○	1752680-6 * 1752681-3 ○
2 [34-35]	1752680-5 * 1752681-3 ○	1752680-5 * 1752681-3 ○
1/0 [50-60]	1752680-4 * 1752681-1 ○	1752680-4 * 1752681-1 ○
2/0 [67-70]	1752680-3 * 1752681-1 ○	1752680-3 * 1752681-1 ○
3/0 [80-95]	1752680-2 * 1752681-1 ○	1752680-2 * 1752681-1 ○
4/0 [100-125]	1752680-1 * 1752681-1 ○	1752680-1 * 1752681-1 ○

*	Stationary Die
○	Moving Die

# POWER HAND TOOLING

## Dies, Hand Tools, and Hydraulic Heads – Configuration Options for 10,000 psi

### TERMINYL Terminals and Splices



Wire Size in AWG [mm²]	Hydraulic Crimp Tooling 10,000 psi Operating Pressure					
	Hand Tools (U-Die)		Hydraulic Heads (U-Die)		Hydraulic Heads (Shank-Die)	
	1490748-1	1490749-1	1490745-1 1490747-1	1490746-1 1976230-1	1752877-1	1752787-1
8 [7-8.5]	1490597-1	1490597-1	1490597-1	1490597-1		
6 [13-15]	1490598-1	1490598-1	1490598-1	1490598-1		
4 [21]	1490599-1	1490599-1	1490599-1	1490599-1		
4HD					69463	69463
2 [34-35]		1490406-1		1490406-1		
1/0 [50-60]		1490700-1		1490700-1	47824	47824
2/0 [67-70]					47825	47825
3/0 [80-95]					47915	47915
4/0 [100-125]					47918	47918

### PLASTI-GRIP Terminals and Splices



Wire Size in AWG [mm²]	Hydraulic Crimp Tooling 10,000 psi Operating Pressure			
	Hand Tool (U-Die)	Hydraulic Head (U-Die)	Hydraulic Heads (Shank Die)	
	1490749-1	1490746-1 1976230-1	1752877-1	1752787-1
8 [7-8.5]	1490534-1	1490534-1	48858-1	48858-1
6 [13-15]	1490535-1	1490535-1	48859-1	48859-1
4 [21]	1490536-1	1490536-1	48860-1	48860-1
2 [34-35]	1490410-1	1490410-1	48861-1	48861-1
1/0 [50-60]			48756-1	48756-1
2/0 [67-70]			48757-1	48757-1
3/0 [80-95]			48758-1	48758-1
4/0 [100-125]			48759-1	48759-1

# POWER HAND TOOLING

## Dies, Hand Tools, and Hydraulic Heads – Configuration Options for 10,000 psi

### STRATO-THERM Terminals and Splices



Wire Size in AWG [mm <sup>2</sup> ]	Hydraulic Crimp Tooling 10,000 psi Operating Pressure	
	Hydraulic Head (Shank Die)	
	1752868-1	
8 [7-8.5]	69211-1	
6 [13-15]	69212-1	
4 [21]	69213-1	
2 [34-35]	69214-1	
1/0 [50-60]	69215-1	
2/0 [67-70]	69254-1	

### AMPOWER Quick Disconnect Terminals



Wire Size in AWG [mm <sup>2</sup> ]	Hydraulic Crimp Tooling 10,000 psi Operating Pressure	
	Hydraulic Heads (Shank Die)	
	1752868-1	1752786-1
1/0 [50-60]	68361-1 ○ / 68200-1	
2/0 [67-70]	68253-1 ○ / 68201-1	
3/0 [80-95]	59867-1 ○	
4/0 [100-125]	68304-1 ○	
250 MCM [127]	68203-1	
350 MCM [177]		68204-1
400 MCM [203]		68332-1 ●
500 MCM [253]		68206-1 ●
600 MCM [304]		46757-3

○	With Locator
●	Dual Crimp

# POWER HAND TOOLING

## Dies, Hand Tools, and Hydraulic Heads – Configuration Options for 10,000 psi

### AMPOWER Terminals and Splices



Wire Size in AWG [mm²]	Hydraulic Crimp Tooling 10,000 psi Operating Pressure						
	Hand Tools (U-Die)		Hydraulic Heads (U-Die)		Hydraulic Heads (Shank Die)		
	1490748-1	1490749-1	1490745-1 1490747-1	1490746-1 1976230-1	1752868-1	1752788-1	1752786-1
6 [13-15]	1583092-1	1583092-1	1583092-1	1583092-1	69133-1		
4 [21]	1583093-1	1583093-1	1583093-1	1583093-1	69134-2		
2 [34-35]	1583094-1	1583094-1	1583094-1	1583094-1	46765-3		
1/0 [50-60]	1583095-1	1583095-1	1583095-1	1583095-1	46766-2		
2/0 [67-70]	1583096-1	1583096-1	1583096-1	1583096-1	46767-2		
3/0 [80-95]				1583097-1♦	46749-2		
4/0 [100-125]				1583098-1♦	46750-2		
250 MCM [127]					46751-2	46326-2	
300 MCM [152]					46752-2		
350 MCM [177]					46753-2		69653
400 MCM [203]							46754-2
500 MCM [253]							46755-2
600 MCM [304]							46756-2
600 HD							59870-1
700 MCM [355]							46757-2
800 MCM [405]							46758-2
900 MCM [456]							46759-2
1000 MCM [507]							46760-2

♦	1976230-1 only
---	----------------



# POWER HAND TOOLING

## Dies, Hand Tools, and Hydraulic Heads – Configuration Options for 10,000 psi

### Sealed Crimp COPALUM Terminals and Splices



Wire Size in AWG [mm <sup>2</sup> ]		Hydraulic Crimp Tooling 10,000 psi Operating Pressure			
		Hand Tool (U-Die)	Hydraulic Head (U-Die)	Hydraulic Heads (Shank Die)	
Al	Cu				
		1490749-1	1490746-1 1976230-1	1752877-1	1752787-1
8 [7-8.5]	10 [5-6]	1490555-1	1490555-1	68006	68006
6 [13-15]	8 [7-8.5]	1490556-1	1490556-1	68007	68007
4 [21]	6 [13-15]	1490557-1	1490557-1	68008	68008
2 [34-35]	4 [21]			68009	68009
1/0 [50-60]	2 [34-35]			68010	68010
2/0 [67-70]	1/0 [50-60]			314964-1	68011-1
3/0 [80-95]	2/0 [67-70]				59877-1
4/0 [100-125]	3/0 [80-95]				314948-1



### Bar Crimp COPALUM Terminals and Splices

Wire Size in AWG [mm <sup>2</sup> ]		Hydraulic Crimp Tooling 10,000 psi Operating Pressure			
		Hand Tool (U-Die)	Hydraulic Head (U-Die)	Hydraulic Heads (Shank Die)	
Al	Cu				
		1490749-1	1490746-1 1976230-1	1752868-1	1752786-1
8 [7-8.5]	10 [5-6]	1490572-1	1490572-1	68043	
6 [13-15]	8 [7-8.5]	1490573-1	1490573-1	68044	
4 [21]	6 [13-15]	1490574-1	1490574-1	68045	
2 [34-35]	4 [21]	1490575-1	1490575-1	68046	
1/0 [50-60]	2 [34-35]			68047	
2/0 [67-70]	1/0 [50-60]			68048	
3/0 [80-95]	2/0 [67-70]			68049	
4/0 [100-125]	3/0 [80-95]				68050
250 MCM [127]	4/0 [100-125]				68034
300 MCM [152]	250 MCM [127]				68035
400 MCM [203]	300 MCM [152]				68036
500 MCM [253]	400 MCM [203]				68037

# POWER HAND TOOLING

## Dies, Hand Tools, and Hydraulic Heads – Configuration Options for 10,000 psi

### Insulation Piercing Crimp COPALUM Terminals and Splices



Wire Size in AWG [mm²]		Hydraulic Crimp Tooling 10,000 psi Operating Pressure			
		Hand Tool (U-Die)	Hydraulic Head (U-Die)	Hydraulic Heads (Shank Die)	
Al	Cu				
8 [7-8.5]	10 [5-6]	1490749-1	1490746-1 1976230-1	1752868-1	1752786-1
6 [13-15]	8 [7-8.5]	1490714-1	1490714-1	68084	
4 [21]	6 [13-15]	1490715-1	1490715-1	68085	
2 [34-35]	4 [21]	1490716-1	1490716-1	68086	
1/0 [50-60]	2 [34-35]	1490717-1	1490717-1	68130	
2/0 [67-70]	1/0 [50-60]	1490718-1	1490718-1	68131	
3/0 [80-95]	2/0 [67-70]			68132	
4/0 [100-125]	3/0 [80-95]			68133	
				318106-1	68129

## Hydraulic Equipment Options for 68,950 kPa / 10,000 psi

### Pistol Grip Battery Tool Kit

PN **280308-1** (12 ton 1 stroke, 110V)  
PN **280308-2** (12 ton 1 stroke, 220V)

- Complete kit with batteries and battery charger
- Accepts U-Dies
- Rotating head 320°
- Excellent power to weight ratio
- Cycle life: 10,000 cycles



### Hydraulic Foot Pump, manual

PN **1583659-1**



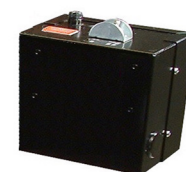
### Hydraulic Hand Pump, manual

PN **1583661-1**



### 3-Way Multidirectional Valve

PN **1901782-1** (manual)



[tooling.te.com](http://tooling.te.com)

## Hydraulic Powered Crimp Tooling for 8,200 psi

### FAST FACTS

- TE legacy 8,200 psi hydraulic system pumps and crimp heads
- Electric & manual hydraulic pumps for crimping at fixed locations
- 8,200 psi crimp heads compatible with shank dies available for wire sizes requiring a crimp force up to 33 tons
- U-die crimp head stroke options of 1" and 1.5"
- Hand-held pistol grip tools with rechargeable battery for U-dies
- Integrated crimp head/die combinations for crimping #8-2 AWG SOLISTRAND terminals



TE Connectivity's line of quality tooling TE legacy 8,200 psi [56,540 kPa] hydraulic tool systems. The basic hydraulic tool system requires a pump, hose (multiple lengths are available with all configurations), crimp head, and crimp die. There is a TE hydraulic pump to meet the demands of any crimping application. For fixed crimping locations, you can choose between a 110V or 220V Electric Hydraulic Pump (with optional remote hand control), or manual foot and hand hydraulic pumps.

For wire sizes requiring up to 33 tons [294 kN], TE offers crimp heads for 8,200 psi pumps that are compatible with shank dies. For an 8,200 psi hydraulic system, there are eight crimp heads available. These crimp heads accept shank dies. The crimp heads are available for wire sizes requiring up to 33 tons of crimp force.

For both hydraulic systems, an integrated head/die for crimping #8 to #2 SOLISTRAND terminals is available. There are also manual hand held hydraulic tools available for both U and shank die sets.

**Note: 10,000 psi hydraulic pumps are not compatible with 8,200 psi crimp heads. 8,200 psi hydraulic pumps are not compatible with 10,000 crimp heads.**

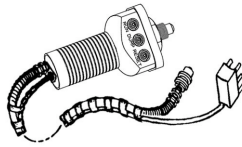
# POWER HAND TOOLING

## HYDRAULIC TOOLING SELECTION GUIDE for 8,200 psi

### Hydraulic Pumps, Controls and Hoses The Heavy-duty Pump is designed for higher crimp cycle frequency.



WITH



OR



AND



Heavy Duty Electric Hydraulic Pump (110V)<sup>1,2</sup> **P/N 69120-1**  
OR  
Heavy Duty Electric Hydraulic Pump (220V)<sup>1,2</sup> **P/N 69120-2**  
CM 409-1950

Remote Hand Control<sup>3</sup> (for Heavy-Duty pump) w/hose attached  
**P/N 59907-7** (7 ft hose)  
**P/N 1-59907-5** (15 ft hose)  
**P/N 2-59907-1** (21 ft hose)

Remote Foot Control<sup>3</sup> (for Heavy-Duty pump)  
**P/N 68284-1**

Hydraulic Hoses<sup>4</sup> (not required for hand control)  
**P/N 59909-3** (3 ft)  
**P/N 59909-7** (7 ft)  
**P/N 1-59909-5** (15 ft)  
**P/N 2-59909-1** (21 ft)

### Heavy-Duty Crimp Heads (Shank Dies) (> 25,000 cycles) Shank Dies



250 MCM - 600 MCM  
33 ton output force  
28 lbs  
**P/N 58445-1**  
IS 408-9598

8 - 4/0 AWG  
22 ton output force  
16 lbs  
**P/N 69066**  
IS 408-2453

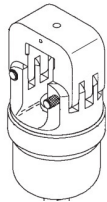
4/0 AWG - 1000 MCM  
26 ton output force  
29 lbs  
**P/N 69082**  
IS 408-2456

8 - 4/0 AWG  
33 ton output force  
28 lbs  
**P/N 58422-1**  
IS 408-9535

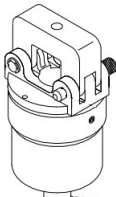
12-10 AWG - 350 MCM  
18 ton output force  
13 lbs  
**P/N 69099**  
IS 408-2458

PLASTI-GRIP	8 AWG - 4/0 AWG
AMPOWER	6 AWG - 1500 MCM
AMPOWER Quick Disconnect	1/0 AWG - 600 MCM
Insulation Piercing COPALUM	10 AWG (Cu) - 3/0 AWG
Sealed COPALUM	10 AWG - 3/0 AWG
Bar COPALUM	10 AWG (Cu) - 400 MCM
SOLISTRAND	8 AWG - 600 MCM
STRATO-THERM	8 AWG - 2/0 AWG
TERMINYL	1/0 AWG thru 4/0 AWG

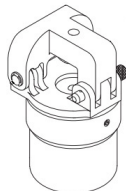
### Hydraulic Hand Tools



8 - 2 AWG  
8 ton output force  
5 lbs  
**P/N 69051**  
IS 408-2450



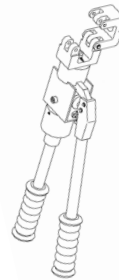
8 - 4/0 AWG  
12 ton output force  
10 lbs  
**P/N 69065**  
IS 408-2452



8 - 4/0 AWG  
12 ton output force  
10 lbs  
**P/N 69067**  
IS 408-2454



8-4/0 AWG  
12.5 lbs  
**P/N 59973-1**  
IS 408-6803



8-2 AWG  
8 lbs  
**P/N 59974-1**  
IS 408-6757

- Powered systems require a pump, hand or foot control, hose, crimp head and die except with **69069**.
- Manual systems require hand tools and the battery hand tool requires only dies.

- Hand Pump **314979-1** can be substituted as manual options for Electro-Hydraulic Pumps.
- Includes female screw-to-connect, 3/8 NPT quick couplers.
- Not required with manual pump options.
- Includes male screw-to-connect, 3/8 NPT quick couplers.

### SOLISTRAND (Integrated Crimp Dies)



#8-#2 AWG SOLISTRAND Compression Head (No crimp dies required)  
**P/N 69069**  
IS 408-1745



#8-#2 AWG SOLISTRAND Compression Tool (No crimp dies required)  
**P/N 59975-1**  
IS 408-6758

[tooling.te.com](http://tooling.te.com)

ATION TOOLING /// HYDRAULIC CRIMP TOOLING

# POWER HAND TOOLING

## Dies, Hand Tools, and Hydraulic Heads – Configuration Options for 8,200 psi

The TE Connectivity hydraulic crimping tool line offers a wide array of die, hand tool, and hydraulic head configurations. Use the following tables to determine the configuration that best matches your requirements.

### SOLISTRAND Terminals



DYNA-CRIMP System 8,200 psi Operating Pressure						
Wire Size in AWG [mm²]	Hand Tool	Hydraulic Heads	Hydraulic Heads (Shank Dies)			
		59973-1	69065 69067	69069▲	69099	58445-1
8 [7-8.5]	48126** 48355○	48126** 48355○	▲	69216		
6 [13-15]	48128** 48127○	48128** 48127○	▲	69217		
4 [21]	48129** 48127○	48129** 48127○	▲	69218		
2 [34-35]	48130** 48127○	48130** 48127○	▲	45433		
1/0 [50-60]	48132** 48131○	48132** 48131○		45436		
2/0 [67-70]	48133** 48131○	48133** 48131○		45439		
3/0 [80-95]	48134** 48131○	48134** 48131○		45442		
4/0 [100-125]	300430** 48131○	300430** 48131○		45445		
250-300 MCM [127-152]					48816	69911
300-350 MCM [152-177]					48817	69912
400 MCM [203]					48818	69913
500-600 MCM [253-304]					48819	69914

**	Stationary Die
○	Moving Die
▲	Self-Contained Die

# POWER HAND TOOLING

## Dies, Hand Tools, and Hydraulic Heads – Configuration Options for 8,200 psi

### Heavy Duty SOLISTRAND Terminals



Wire Size in AWG [mm <sup>2</sup> ]	DYNA-CRIMP System 8,200 psi Operating Pressure	
	Hand Tools (U-Die)	Hydraulic Heads (U-Die)
		59973-1
8 [7-8.5]	48128-1 ✱ 48127-1 ○	48128-1 ✱ 48127-1 ○
6 [13-15]	48129-1 ✱ 48127-1 ○	48129-1 ✱ 48127-1 ○
4 [21]	48130-1 ✱ 48127-1 ○	48130-1 ✱ 48127-1 ○
2 [34-35]	48132-1 ✱ 48131-1 ○	48132-1 ✱ 48131-1 ○
1/0 [50-60]	48133-1 ✱ 48131-1 ○	48133-1 ✱ 48131-1 ○

### SOLISTRAND Flag Terminals



Wire Size in AWG [mm <sup>2</sup> ]	DYNA-CRIMP System 8,200 psi Operating Pressure
	Hydraulic Heads (U-Die)
	69067
8 [7-8.5]	48506 ✱ 48505 ○
6 [13-15]	48508 ✱ 48507 ○
4 [21]	48509 ✱ 48507 ○
2 [34-35]	48510 ✱ 48507 ○
1/0 [50-60]	48652 ✱ 48511 ○
2/0 [67-70]	48805 ✱ 48511 ○
3/0 [80-95]	48806 ✱ 48511 ○
4/0 [100-125]	48807 ✱ 48511 ○

✱	Stationary Die
○	Moving Die

# POWER HAND TOOLING

## Dies, Hand Tools, and Hydraulic Heads – Configuration Options for 8,200 psi

### TERMINYL Terminals and Splices

Wire Size in AWG [mm <sup>2</sup> ]	DYNA-CRIMP System 8,200 psi Operating Pressure			
	Hand Tool	Hydraulic Heads (Shank Die)		
	59974-1	69051	69066	58422-1
8 [7-8.5]	47820	47820		
6 [13-15]	47821	47821		
4 [21]	47822	47822		
4HD			69463	69463
2 [34-35]	47823	47823		
1/0 [50-60]			47824	47824
2/0 [67-70]			47825	47825
3/0 [80-95]			47915	47915
4/0 [100-125]			47918	47918

### PLASTI-GRIP Terminals and Splices

Wire Size in AWG [mm <sup>2</sup> ]	DYNA-CRIMP System 8,200 psi Operating Pressure			
	Hand Tool	Hydraulic Heads (Shank Die)		
	59974-1	69051	69066	58422-1
8 [7-8.5]	48752-1	48752-1	48858-1	48858-1
6 [13-15]	48753-1	48753-1	48859-1	48859-1
4 [21]	48754-1	48754-1	48860-1	48860-1
2 [34-35]	48755-1	48755-1	48861-1	48861-1
1/0 [50-60]			48756-1	48756-1
2/0 [67-70]			48757-1	48757-1
3/0 [80-95]			48758-1	48758-1
4/0 [100-125]			48759-1	48759-1

# POWER HAND TOOLING

## Dies, Hand Tools, and Hydraulic Heads – Configuration Options for 8,200 psi

### STRATO-THERM Terminals and Splices



Wire Size in AWG [mm²]	DYNA-CRIMP System 8,200 psi Operating Pressure	
	Hydraulic Head (Shank Die)	
	69099	
8 [7-8.5]	69211-1	
6 [13-15]	69212-1	
4 [21]	69213-1	
2 [34-35]	69214-1	
1/0 [50-60]	69215-1	
2/0 [67-70]	69254-1	

### AMPOWER Quick Disconnect Terminals



Wire Size in AWG [mm²]	DYNA-CRIMP System 8,200 psi Operating Pressure	
	Hydraulic Heads (Shank Die)	
	69099	69082
1/0 [50-60]	68361-1 ○ / 68200-1	
2/0 [67-70]	68253-1 ○ / 68201-1	
3/0 [80-95]	59867-1 ○	
4/0 [100-125]	68304-1 ○	
250 MCM [127]	68203-1	
350 MCM [177]		68204-1
400 MCM [203]		68332-1 ●
500 MCM [253]		68206-●
600 MCM [304]		46757-3

○	With Locator
●	Dual Crimp



# POWER HAND TOOLING

## Dies, Hand Tools, and Hydraulic Heads – Configuration Options for 8,200 psi

AMPOWER Terminals and Splices



Wire Size in AWG [mm²]	DYNA-CRIMP System 8,200 psi Operating Pressure				
	Hand Tool	Hydraulic Heads (Shank Die)			
	59973-1	69065 69067	69099	58445-1	69082
6 [13-15]			69133-1		
4 [21]			69134-2		
2 [34-35]	46321-3	46321-3	46765-3		
1/0 [50-60]	46322-2	46322-2	46766-2		
2/0 [67-70]	46323-2	46323-2	46767-2		
3/0 [80-95]	46324-2	46324-2	46749-2		
4/0 [100-125]	46325-2	46325-2	46750-2		
250 MCM [127]			46751-2	46326-2	
300 MCM [152]			46752-2		
350 MCM [177]			46753-2		69653
400 MCM [203]					46754-2
500 MCM [253]					46755-2
600 MCM [304]					46756-2
600 HD					59870-1
700 MCM [355]					46757-2
800 MCM [405]					46758-2
900 MCM [456]					46759-2
1000 MCM [507]					46760-2

tooling.te.com

# POWER HAND TOOLING

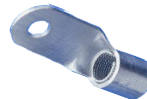
## Dies, Hand Tools, and Hydraulic Heads – Configuration Options for 8,200 psi

### Sealed Crimp COPALUM Terminals and Splices



Wire Size in AWG [mm²]		DYNA-CRIMP System 8,200 psi Operating Pressure	
		Hydraulic Heads (Shank Die)	
Al	Cu		
8 [7-8.5]	10 [5-6]	69066	58422-1
8 [7-8.5]	10 [5-6]	68006	68006
6 [13-15]	8 [7-8.5]	68007	68007
4 [21]	6 [13-15]	68008	68008
2 [34-35]	4 [21]	68009	68009
1/0 [50-60]	2 [34-35]	68010	68010
2/0 [67-70]	1/0 [50-60]	314964-1	68011-1
3/0 [80-95]	2/0 [67-70]		59877-1
4/0 [100-125]	3/0 [80-95]		314948-1

### Bar Crimp COPALUM Terminals and Splices



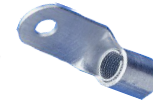
Wire Size in AWG [mm²]		DYNA-CRIMP System 8,200 psi Operating Pressure	
		Hydraulic Heads (Shank Die)	
Al	Cu		
8 [7-8.5]	10 [5-6]	69099	69082
8 [7-8.5]	10 [5-6]	68043	
6 [13-15]	8 [7-8.5]	68044	
4 [21]	6 [13-15]	68045	
2 [34-35]	4 [21]	68046	
1/0 [50-60]	2 [34-35]	68047	
2/0 [67-70]	1/0 [50-60]	68048	
3/0 [80-95]	2/0 [67-70]	68049	
4/0 [100-125]	3/0 [80-95]		68050
250 MCM [127]	4/0 [100-125]		68034
300 MCM [152]	250 MCM [127]		68035
400 MCM [203]	300 MCM [152]		68036
500 MCM [253]	400 MCM [203]		68037

[tooling.te.com](http://tooling.te.com)

APPLICATION TOOLING /// HYDRAULIC CRIMP TOOLING

## Dies, Hand Tools, and Hydraulic Heads – Configuration Options for 8,200 psi

### Insulation Piercing Crimp COPALUM Terminals and Splices



Wire Size in AWG [mm²]		DYNA-CRIMP System 8,200 psi Operating Pressure	
		Hydraulic Heads (Shank Die)	
Al	Cu	69099	69082
8 [7-8.5]	10 (5-6)	68084	
6 [13-15]	8 [7-8.5]	68085	
4 [21]	6 [13-15]	68086	
2 [34-35]	4 [21]	68130	
1/0 [50-60]	2 [34-35]	68131	
2/0 [67-70]	1/0 [50-60]	68132	
3/0 [80-95]	2/0 [67-70]	68133	
4/0 [100-125]	3/0 [80-95]	318106-1	68129

## Hydraulic Equipment Options for 56,540 kPa / 8,200 psi

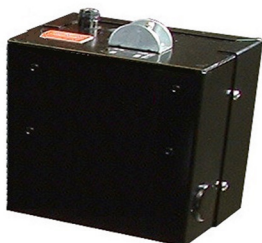
Hydraulic Hand Pump, manual

PN **314979-1**



3-Way Multidirectional Valve

PN **59920** (manual)



[tooling.te.com](http://tooling.te.com)



## Let's Connect

To learn more about our Hydraulic Hand Tool portfolio or our comprehensive bundle of tooling solutions please visit us at [tooling.te.com](http://tooling.te.com)



## TE Technical Support Center

USA:	1.800.522.6752	UK:	+44.0800.267666
Canada:	1.800.522.6752	France:	+33.1.34.20.8686
Mexico:	+52.55.1106.0800	Netherlands:	+31.73.624.6999
Latin/S. America	+54.11.4733.2200	China:	+86.400.820.6015
Germany:	+49.6151.607.1999		



### Add Power to Your Production.

If your production needs require fast, mobile hand tools that can help eliminate the hand fatigue from performing manual crimps, consider using TE's Lithium-Ion battery hand tools. Many of our Lithium-Ion battery powered hand tools utilize the same interchangeable U and Shank dies found in our manual hydraulic hand tools, thereby speeding up your production capacity without the need for purchasing new die sets. For purchasing options go to [tooling.te.com](http://tooling.te.com).



### Waste Not. Want Not.

Whether it's time or scrap, in manufacturing everyone knows that waste costs money. With our on-site certification and consultation services, we can help you:

- Reduce downtime
- Reduce scrap
- Maintain crimp quality
- Improve manufacturing efficiency

Connect with us today to learn more.

- E-mail: [fieldservicesnorthamerica@te.com](mailto:fieldservicesnorthamerica@te.com)
- Phone: **800-722-1111 or 717-986-3434**
- For additional information download catalog number **1-1307619-0** from [tooling.te.com](http://tooling.te.com).

#### Disclaimer

While TE Connectivity has made every reasonable effort to confirm the accuracy of the information in this catalog, TE does not guarantee that it is error-free, nor does TE make any other representation, warranty or guarantee that the information is accurate, correct, reliable or current. TE reserves the right to make any adjustments to the information contained herein at any time without notice. TE expressly disclaims all implied warranties regarding the information contained herein, including, but not limited to, any implied warranties of merchantability or fitness for a particular purpose. The dimensions in this catalog are for reference purposes only and are subject to change without notice. Specifications are subject to change without notice. Consult TE for the latest dimensions and design specifications.



单击下面可查看定价，库存，交付和生命周期等信息

[>>TE Connectivity\(泰科\)](#)