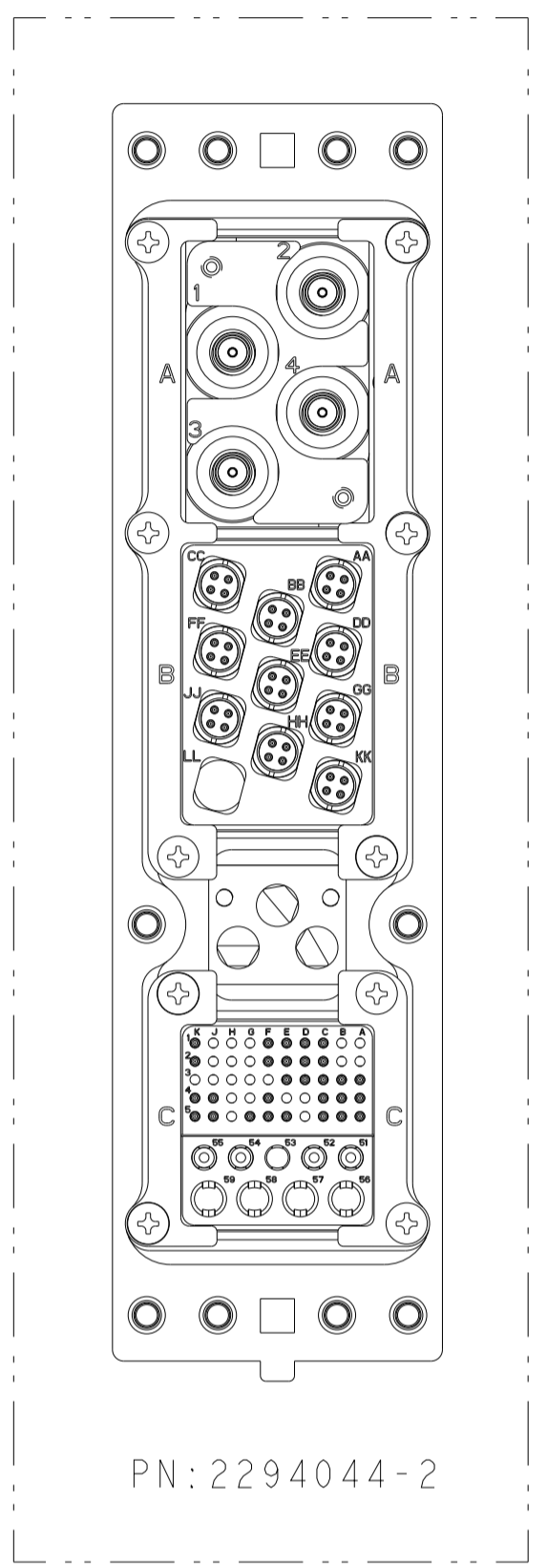
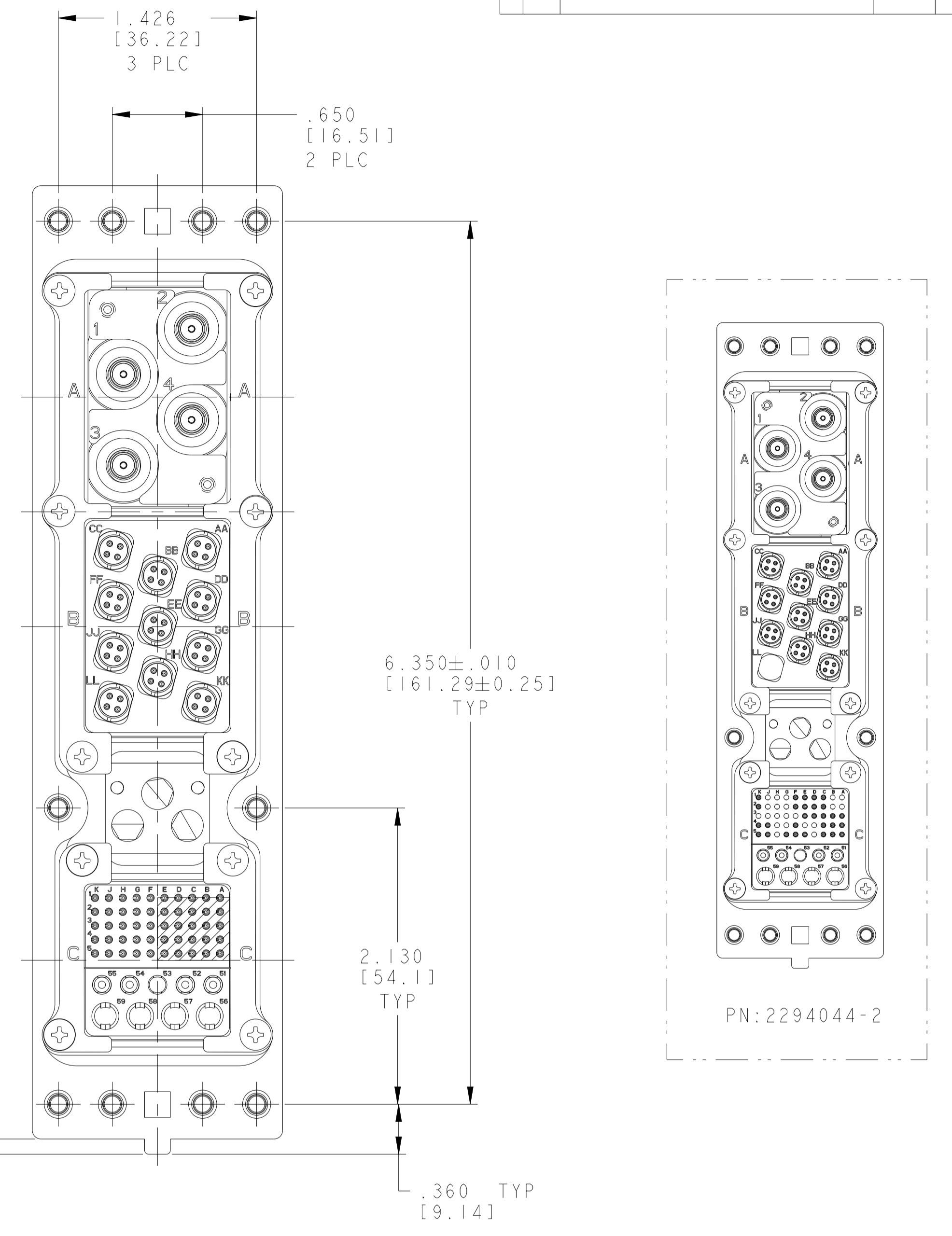
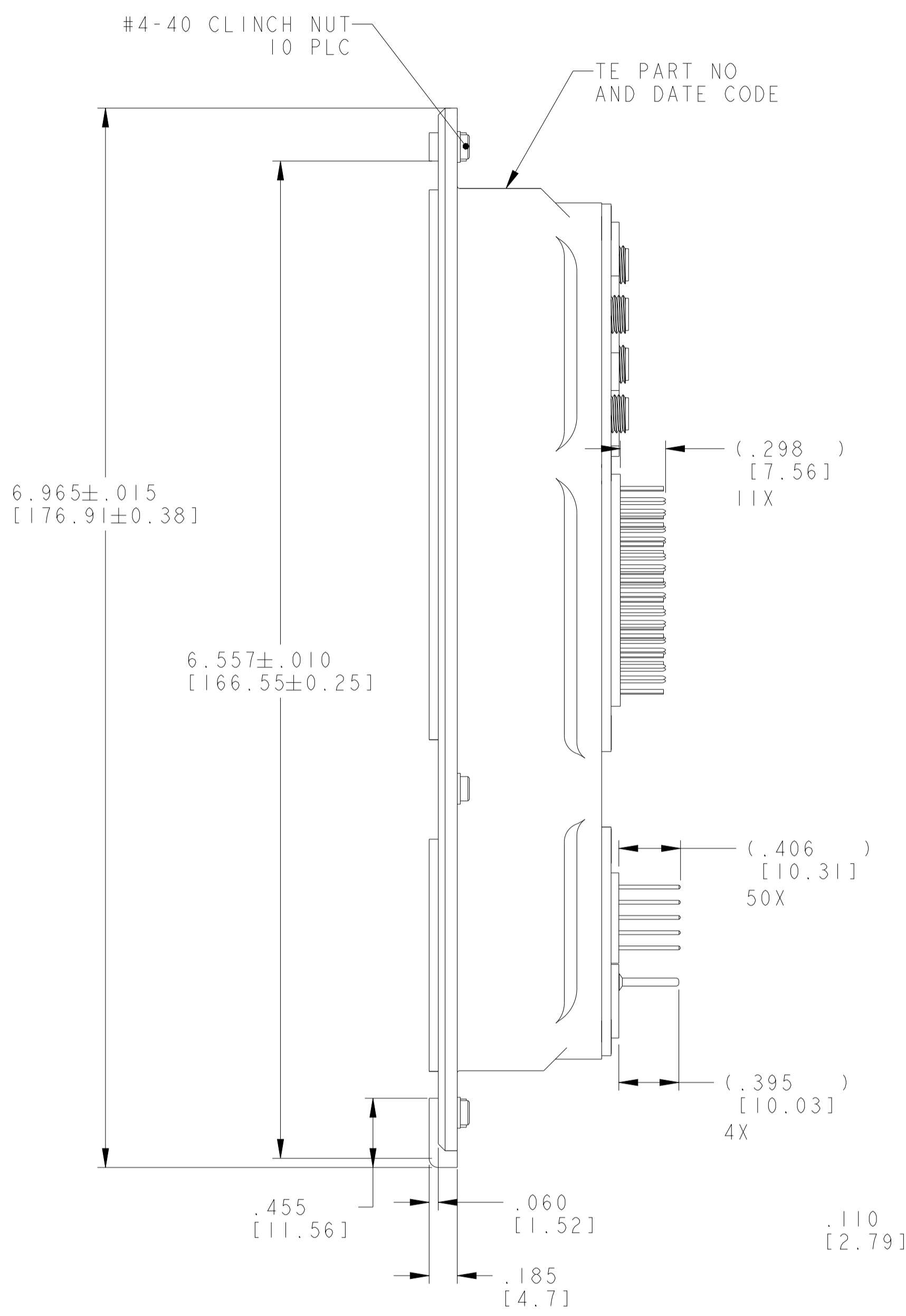
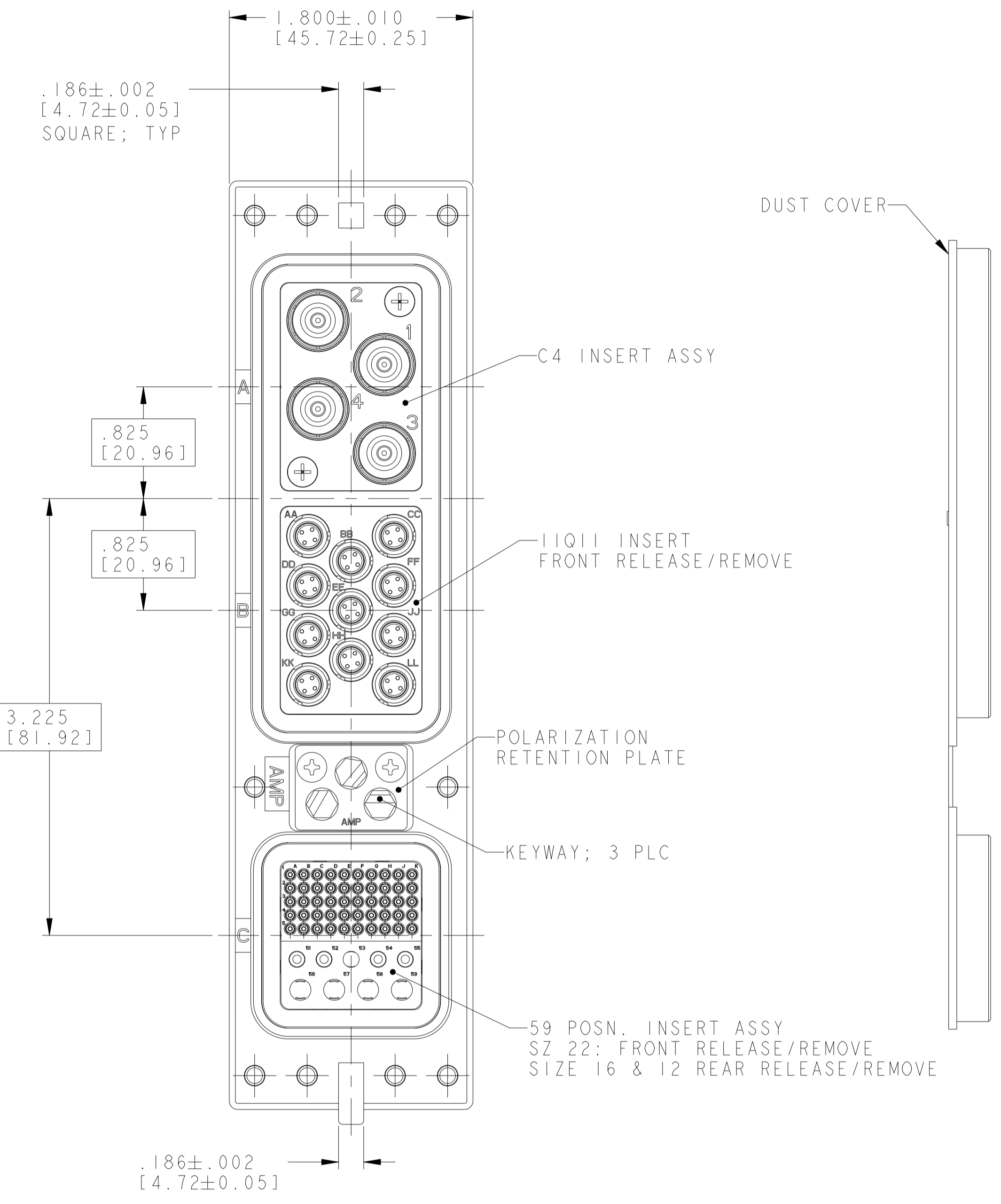


REVISIONS				
P	LTN	DESCRIPTION	DATE	APVD
B		ECO-16-004494	05APR2016	KG MS
C		REV PER ECO 21-007977	26AUG2021	LN DC



- △ ASSEMBLED CONNECTOR FEATURES COMPLY WITH ARINC 600 SPECIFICATION.
 2. KEYING INSTALLED IN POSITION "52".
 3. CONNECTOR IS SUPPLIED WITH A DUST COVER INSTALLED FOR SHIPPING.
- △ THE FOLLOWING CONTACTS ARE INSTALLED:
 - CAVITY A: SIZE 1 SMA CONTACT CONTACT; TE P/N 446748-1; QTY = 4
 - CAVITY B: SIZE 8 QUADRAX CONTACT; TE P/N 1445626-2; QTY = 11
 - CAVITY C: SIZE 22 POSTED SOCKET CONTACT; TE PART NO. 211431-6; QTY = 50
 - SIZE 16 POSTED PIN CONTACT; TE PART NO. 1663128-8; QTY = 4
 - (LOADED IN POSITIONS 51, 52, 54 & 55)
- △ THE FOLLOWING CONTACTS ARE INSTALLED:
 - CAVITY A: SIZE 1 SMA CONTACT CONTACT; TE P/N 446748-1; QTY = 4
 - CAVITY B: SIZE 8 QUADRAX CONTACT; TE P/N 1445626-2; QTY = 10
 - CAVITY C: SIZE 22 POSTED SOCKET CONTACT; TE PART NO. 211431-6; QTY = 29
 - SIZE 16 POSTED PIN CONTACT; TE PART NO. 1663128-8; QTY = 4
 - (LOADED IN POSITIONS 51, 52, 54 & 55)

△	"52"	2294044-2
△	"52"	2294044-1
	KEYING POSITION	PART NUMBER

COMPONENT	MATERIAL	FINISH	REMARKS
11011 INSERT AND C4 INSERT	ALUMINUM ALLOY PER QQ-A225/6	ELECTROLESS NICKEL PER MIL-C-26074	ALL FRONT RELEASE/REMOVE
59 POSITION INSERT	THERMOSET	--	ALL FRONT RELEASE/REMOVE
POLARIZATION KEYWAY	ZINC ALLOY PER ASTM-B-86	--	--
KEYWAY RETAINER PLATE	ALUMINUM ALLOY	BLUE ANODIZED PER MIL-A-8625	--
#4-40 CLINCH NUT QTY = 10	STEEL	ZINC PLATED WITH SUPP YELLOW TRIVALENT CHROMATE	--
SHELL AND RETENTION PLATES	ALUMINUM ALLOY PER ASTM-B-85	ELECTROLESS NICKEL PER AMS-C-26074	--
	ALUMINUM ALLOY PER ASTM-B-209		

THIS DRAWING IS A CONTROLLED DOCUMENT.

OWN: C.C. THOMAS 7-22-15
CHK: W. BERNHART 7-22-15
APVD: W. BERNHART 7-22-15

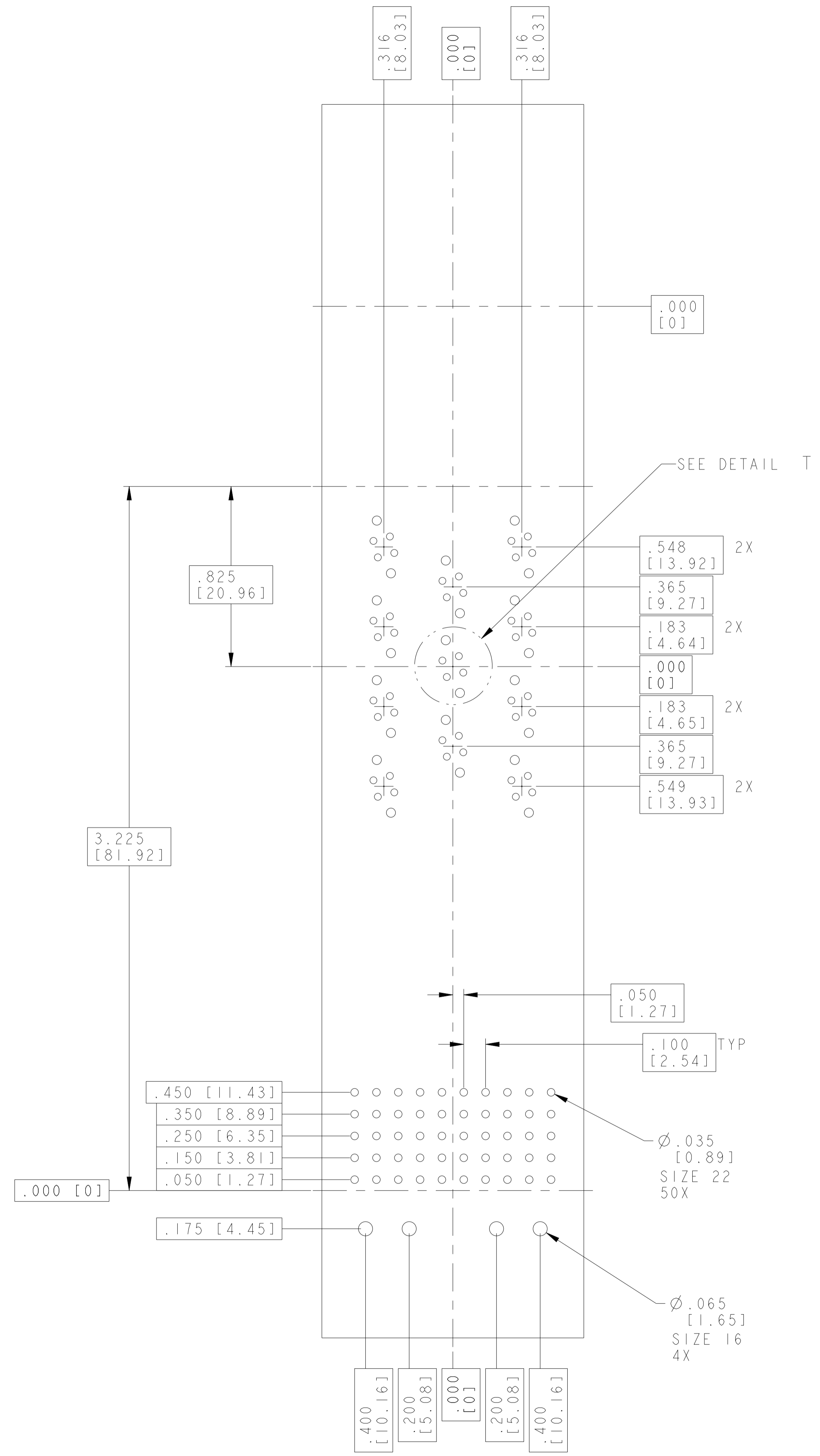
TE Connectivity

RECEPTACLE ASSY, SIZE 2, ARINC 600 (C4/11011/59)

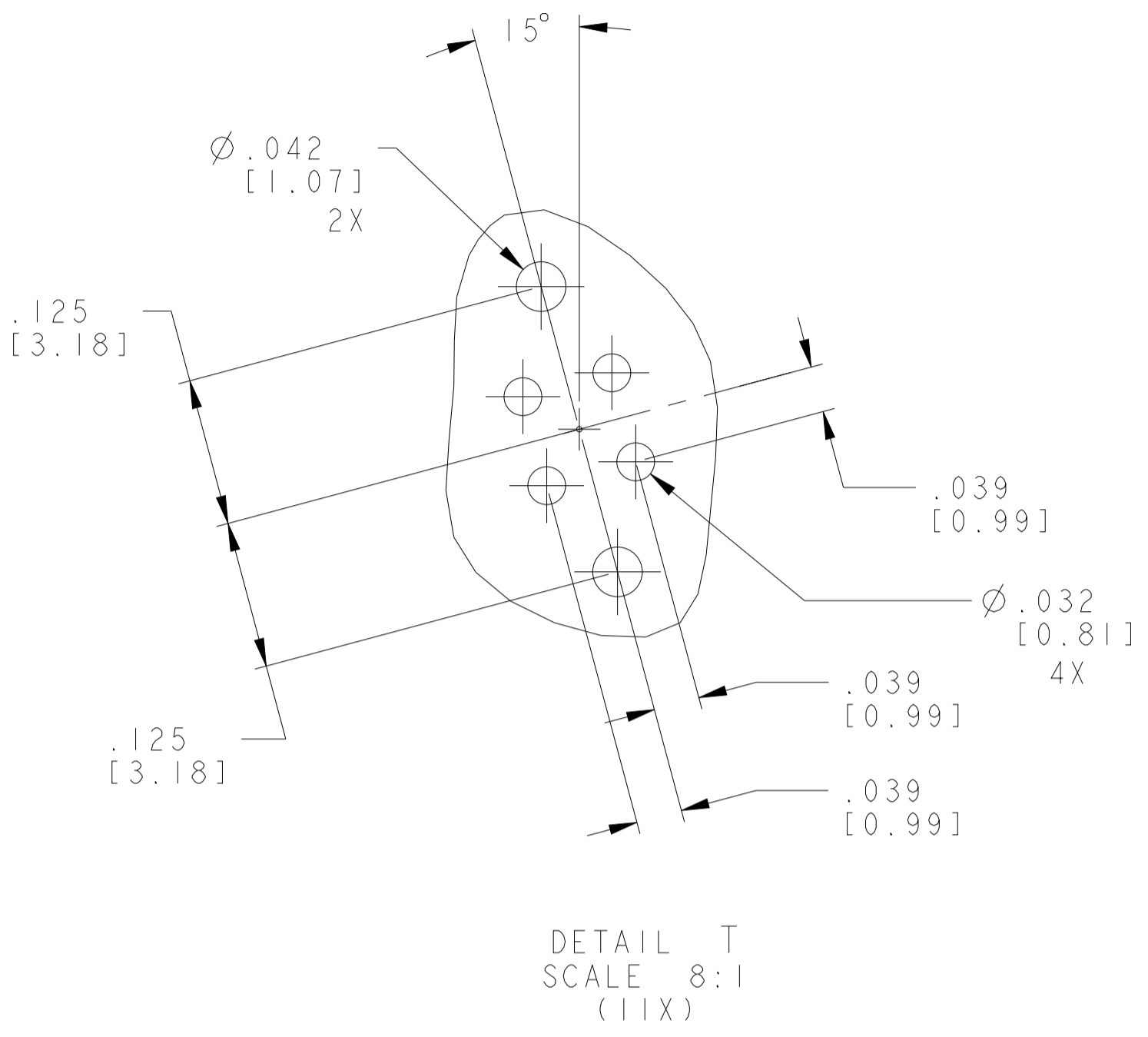
SIZE: CAGE CODE: DRAWING NO: A100779
WEIGHT: -
CUSTOMER DRAWING

SCALE: 3:2 SHEET 1 OF 2 REV C

REVISIONS				
P	LTN	DESCRIPTION	DATE	APVD
-	-	SEE SHEET 1	-	-



RECOMMENDED P.C. BOARD LAYOUT



THIS DRAWING IS A CONTROLLED DOCUMENT.		DWN C.C. THOMAS 8-12-15	TE Connectivity
DIMENSIONS:		CHK M. SPICER 8-12-15	
TOLERANCES UNLESS OTHERWISE SPECIFIED:		APVD M. SPICER 8-12-15	NAME RECEPTACLE ASSY, SIZE 2, ARINC 600 (C4/11011/59)
0 PLC ±	1 PLC ±	PRODUCT SPEC	SIZE
2 PLC ±	3 PLC ±	APPLICATION SPEC	CAGE CODE
4 PLC ±	ANGLES ±	FINISH ±	DRAWING NO
MATERIAL SEE TABLE	SEE TABLE	WEIGHT	RESTRICTED TO
CUSTOMER DRAWING		SCALE 3:2	SHEET 2 OF 2

单击下面可查看定价，库存，交付和生命周期等信息

[>>TE Connectivity\(泰科\)](#)