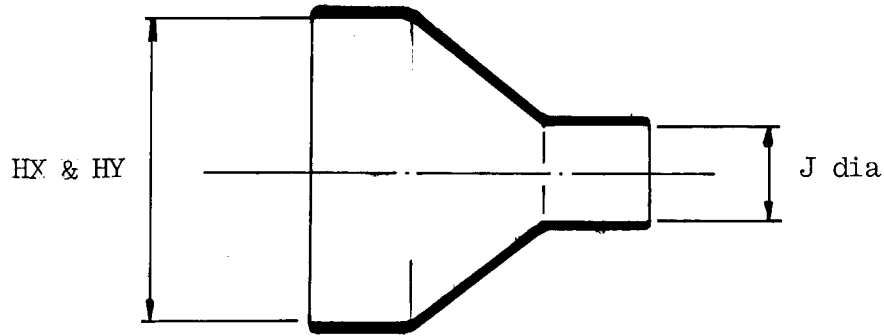
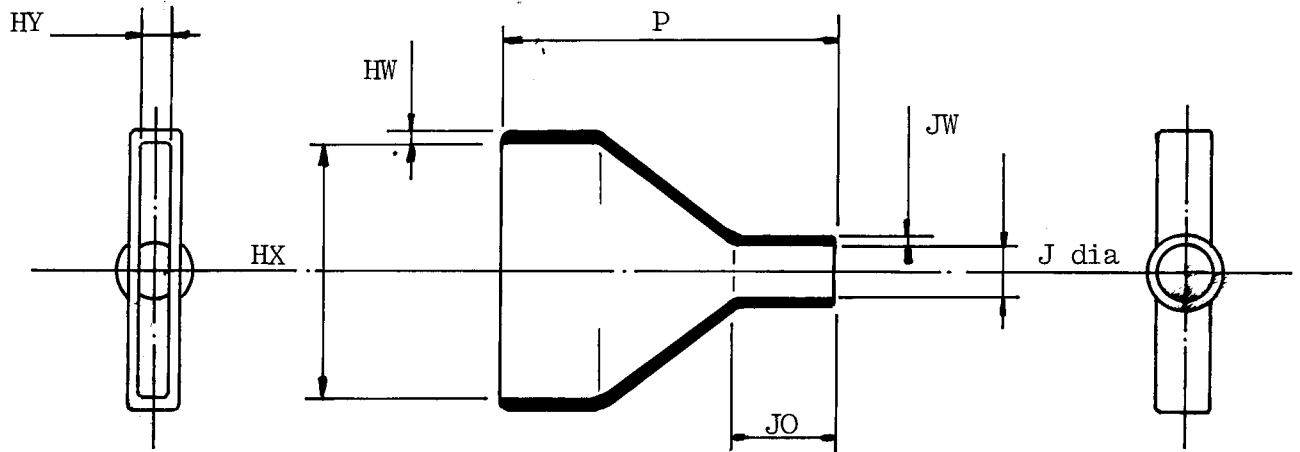


a. Part as supplied.

212W043



b. Part after unrestricted recovery.



Dimensions (in millimetres)

Part No	HX		HY		J		P	JO	HW	JW
	min a	max b	min a	max b	min a	max b	+10% -b	+10% -b	+20% -b	+20% -b
212W043	70	56	14	6.0	16	11	65	20	2,0	1,5

Drawn K.Wallington

Checked *[Signature]* Issue 1

Date February 1984

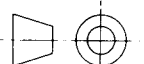
Conforms to ISO Recommendations  
3rd Angle Projection  
Not to scale

Approval

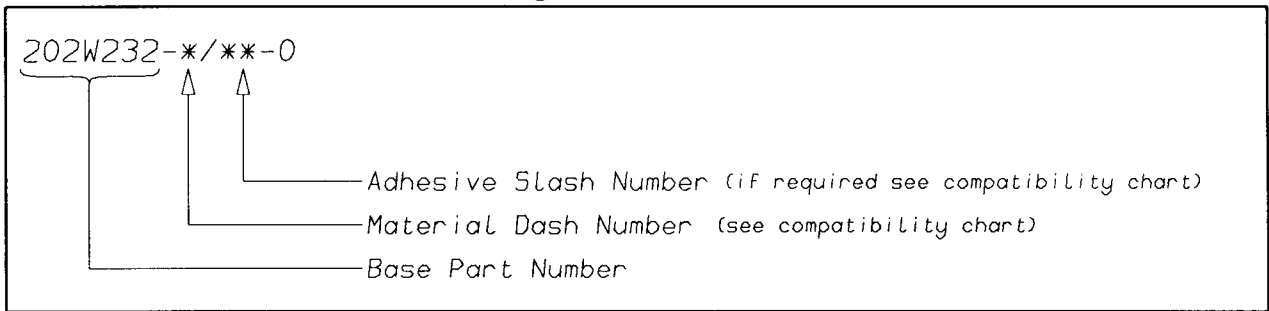
Design *[Signature]*

MKTG *[Signature]*

O.C. *[Signature]*



## Ordering Information



## COMPATIBILITY CHART

MATERIAL DASH NUMBER	MATERIAL DESCRIPTION	COATING SLASH NUMBER
-3	POLYOLEFIN, SEMI-RIGID	/42, /86
-4	POLYOLEFIN, FLEXIBLE	/42, /86
-25	ELASTOMER, FLUID RESISTANT	/86, /225

AS SUPPLIED DIMENSIONS ARE FOR UNCOATED PARTS,  
WHEN COATING IS ADDED, ENTRY DIAMETERS WILL REDUCE BY 1.5mm MAX.

POTTING PORTS ARE OPTIONAL  
WHEN SPECIFIED BY SUFFIX "-00"  
THEY WILL BE LOCATED AS SHOWN

Raychem  
Electronics OEM Division Europe  
Swindon, Wiltshire, England.  
Telephone: (01793) 528171 Fax: 573923

单击下面可查看定价，库存，交付和生命周期等信息

[>>TE Connectivity\(泰科\)](#)