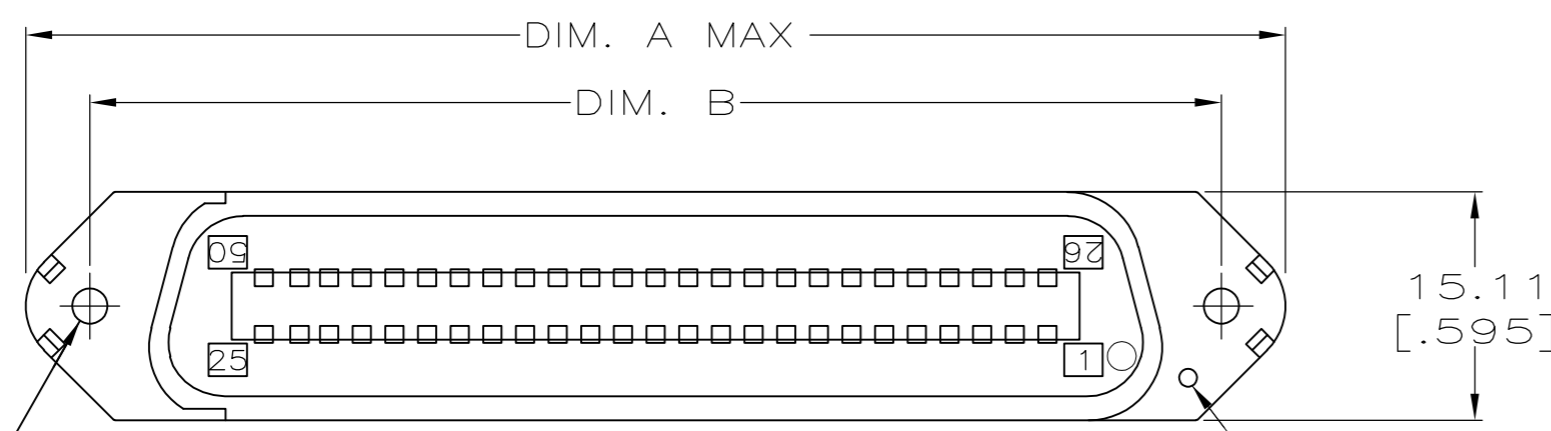


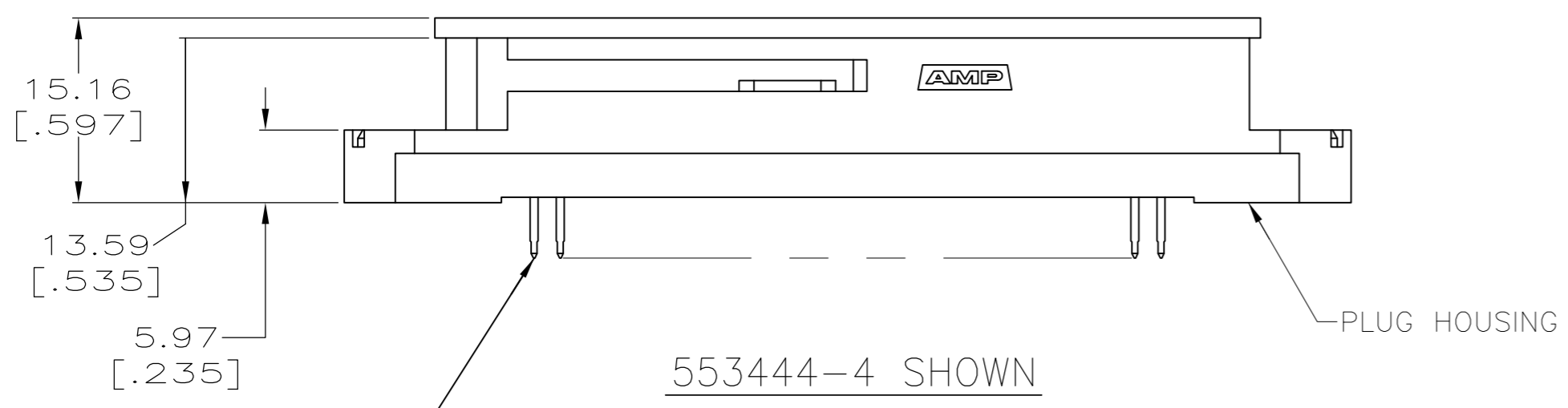
THIS DRAWING IS UNPUBLISHED. RELEASED FOR PUBLICATION
 © COPYRIGHT - By - ALL RIGHTS RESERVED.

LOC		DIST		REVISIONS			
P	LTR	DESCRIPTION		DATE	DWN	APVD	
AA	20	P		PER ECO-13-016325	18OCT13	BL	JY

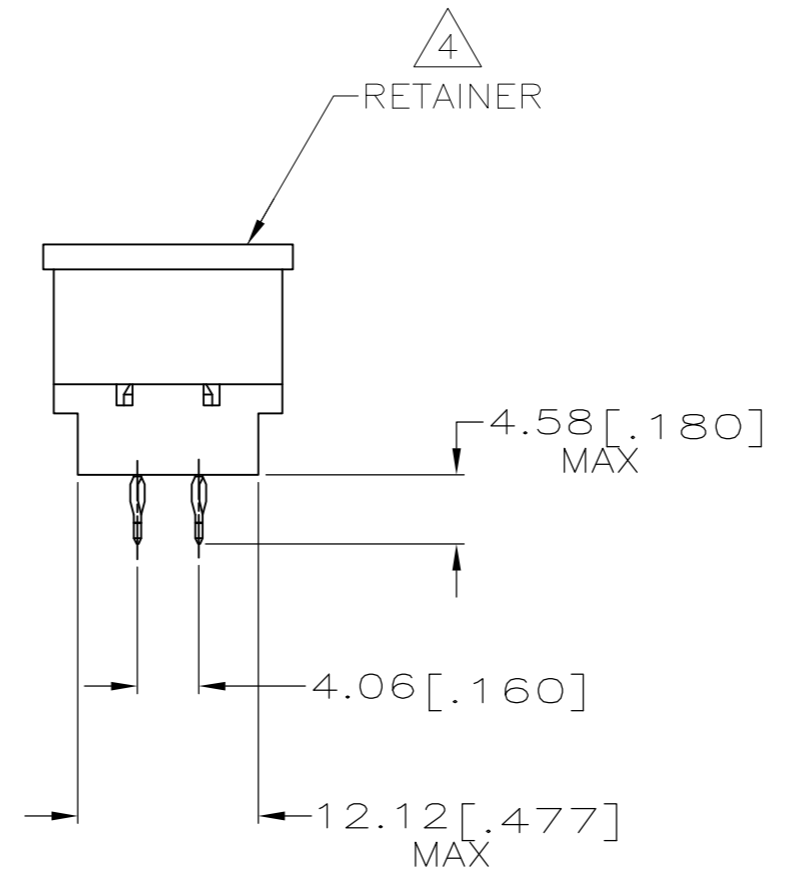


SEE TABLE FOR HOLE SIZE 2 HOLES

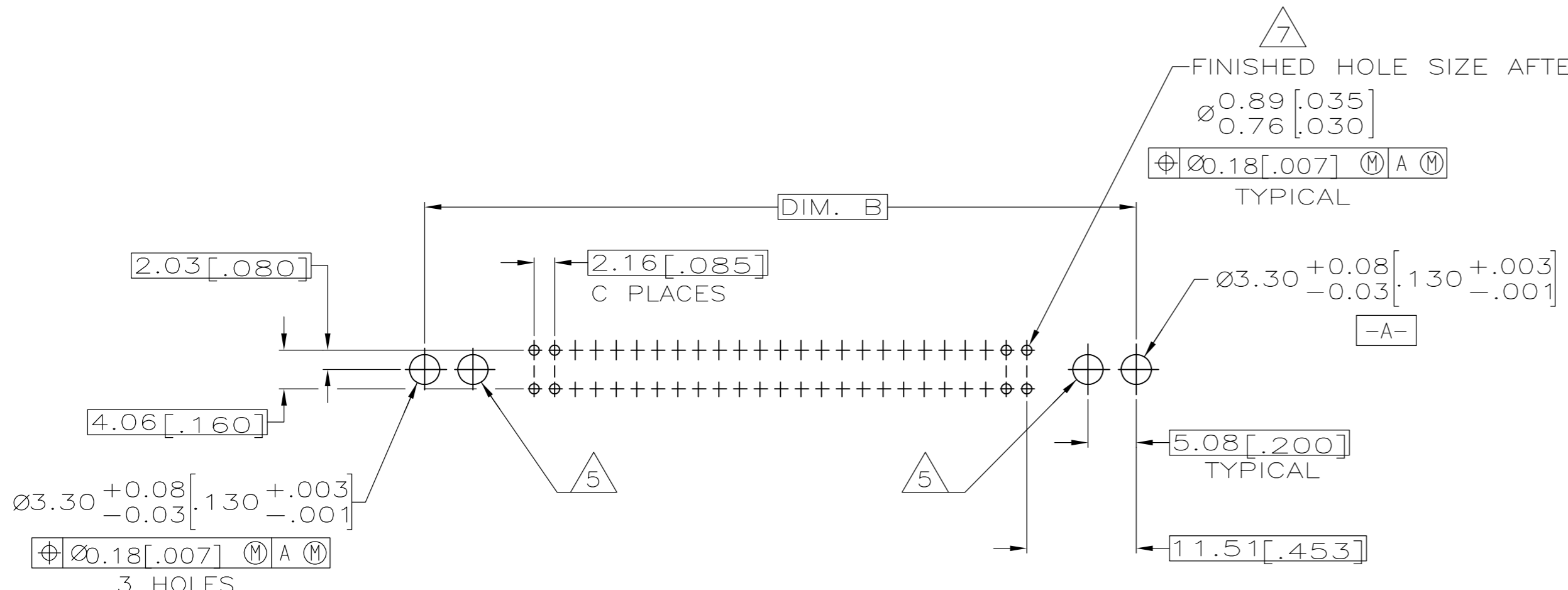
VIEW SHOWN WITH RETAINER REMOVED



TERMINAL QUANTITY 50



- 1 MATERIAL: HOUSING - POLYESTER MOLDING COMPOUND BLACK.
 TERMINAL - COPPER ALLOY PLATED WITH 0.76µm [.000030] MINIMUM THICK GOLD ON MATING SURFACE AND 0.13µm [.000005] MINIMUM THICK GOLD ON ACTION PIN AREA OVER 1.27µm [.000050] MINIMUM THICK NICKEL UNDERPLATE OVER ENTIRE TERMINAL.
 RETAINER - POLYETHYLENE, NATURAL.
- 2. THE CONTACT SURFACES OF THE TERMINALS ARE COATED WITH LUBRICANT.
- 3 ALL DIMENSIONS SHOWN ARE FOR REFERENCE ONLY UNLESS OTHERWISE SPECIFIED.
- 4 RETAINER MUST REMAIN INSTALLED UNTIL AFTER CONNECTOR HAS BEEN INSERTED INTO PCB HOLES.
- 5 OPTIONAL MOUNTING HOLE FOR SELF-TAPPING SCREW.
- 6. CENTER-TO-CENTER SPACING OF TERMINALS IS 2.16 [.085] NOMINAL.
- 7 ALL PLATED-THRU HOLES SHALL BE PER AMP SPEC 115-6072.
- 8 THRU HOLE ON HOUSING FLANGE INDICATES POSITION 1 LOCATION.
- 9 MATERIAL: HOUSING - POLYESTER MOLDING COMPOUND BLACK.
 TERMINAL - COPPER ALLOY PLATED WITH 0.76µm [.000030] MINIMUM THICK GOLD ON MATING SURFACE AND 2.54µm [.0001] MINIMUM THICK TIN ON ACTION PIN AREA OVER 1.27µm [.000050] MINIMUM THICK NICKEL UNDERPLATE OVER ENTIRE TERMINAL.
 RETAINER - POLYETHYLENE, NATURAL.



PRINTED CIRCUIT BOARD MOUNTING DIMENSIONS

QTY	PLC	HOLE SIZE	DIM. B	DIM. A	FINISH	MATERIAL	POSITION	PART NUMBER
24	3-18	[0.125]	74.83	[2.946]	83.31	[3.280]	50	553444-9
24	3-18	[0.125]	74.83	[2.946]	83.31	[3.280]	50	553444-8
31			89.97	[3.542]	98.43	[3.875]	64	553444-5
24	4-40	UNC-2B	74.83	[2.946]	83.31	[3.280]	50	553444-4
17			59.74	[2.352]	68.20	[2.685]	36	553444-3
11			46.79	[1.842]	55.25	[2.175]	24	553444-2

THIS DRAWING IS A CONTROLLED DOCUMENT.

DWN	A. HOLT	05 APR 85
CHK	M. FRIEL	05 JUN 85
APVD	S. HEGE	05 JUN 85

TE Connectivity

PLUG ASSEMBLY, ACTION PIN, CHAMP-LOK

SCALE: 2:1 SHEET 1 of 1 REV P

-553444

单击下面可查看定价，库存，交付和生命周期等信息

[>>TE Connectivity\(泰科\)](#)