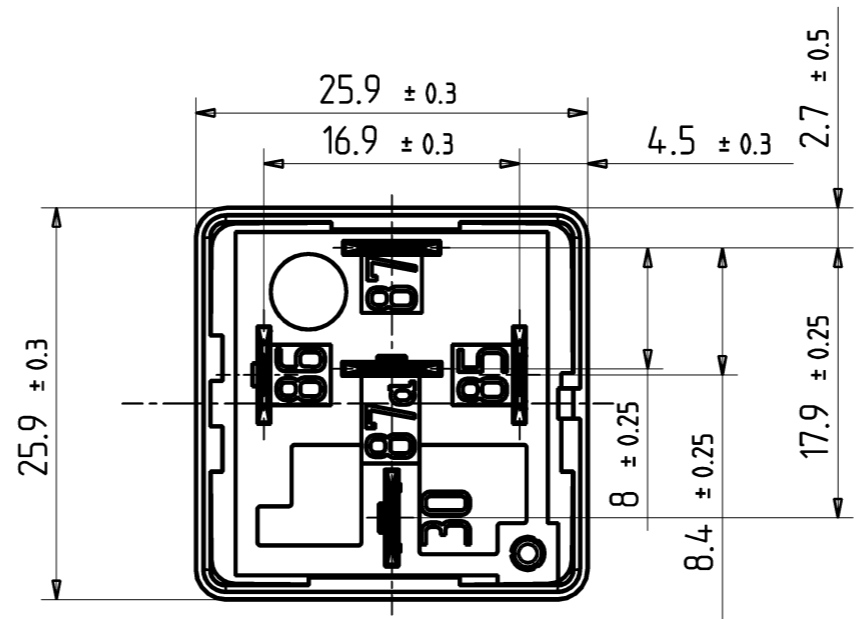


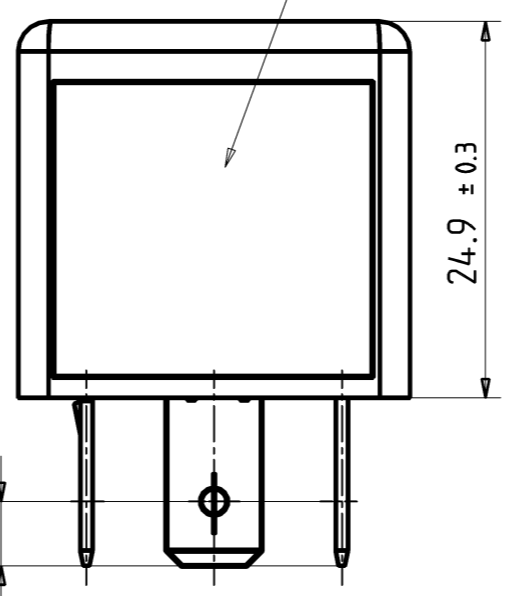
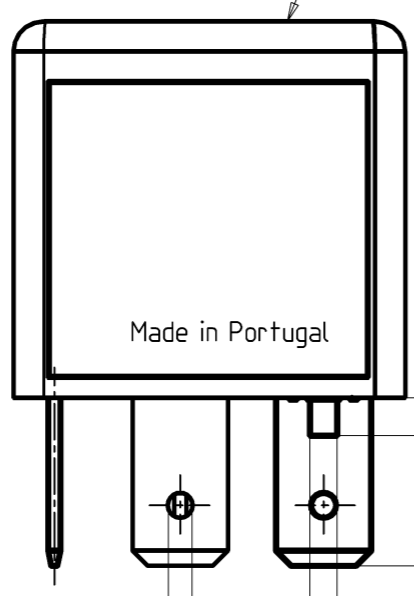
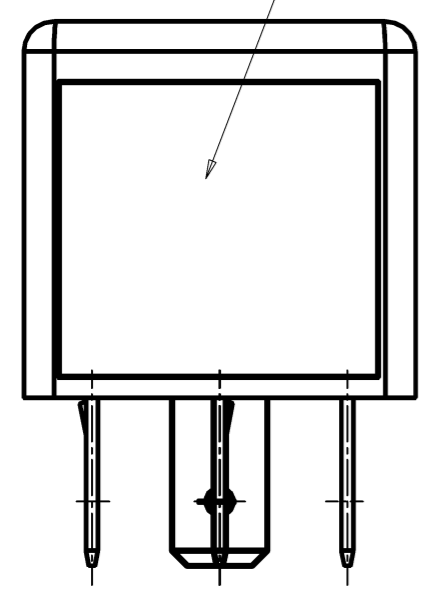
1:1



Circuit Diagram

Run-in test and date codes

Marking Specification



∅ 1.75 ± 0.1      2.2 max.

Latching tab area  
8 min.  
11 ± 0.5

Plug-in terminals 85, 86, 87, 30 and 87a  
Terminals shape in line with DIN/ISO 8092-1 6.3x0.80  
Material CuSn for terminals 85 and 86  
Material E-Cu for terminals 87, 30 and 87a  
All terminals pre-tinned 2...4µm  
Universal mounting

Base material PA66-GF25, black similar to RAL 9005  
Cover material PA66-GF25, gray similar to RAL 7005

Mit CAD erstellt, Änderungen nur im System

X933M01-51		 Maße in mm Dimensions in mm		Maßstab	
		Datum 2005-10-27		---	
		Name L.Sandoval		Dimensional drawing	
		AMR PE Evora		A3	
51	---	2005-10-27	LSan	Power F 40A	
Zust.	Mitteilung	Datum	Name		
V23134-A0007-X933-* -271-					

单击下面可查看定价，库存，交付和生命周期等信息

[>>TE Connectivity\(泰科\)](#)