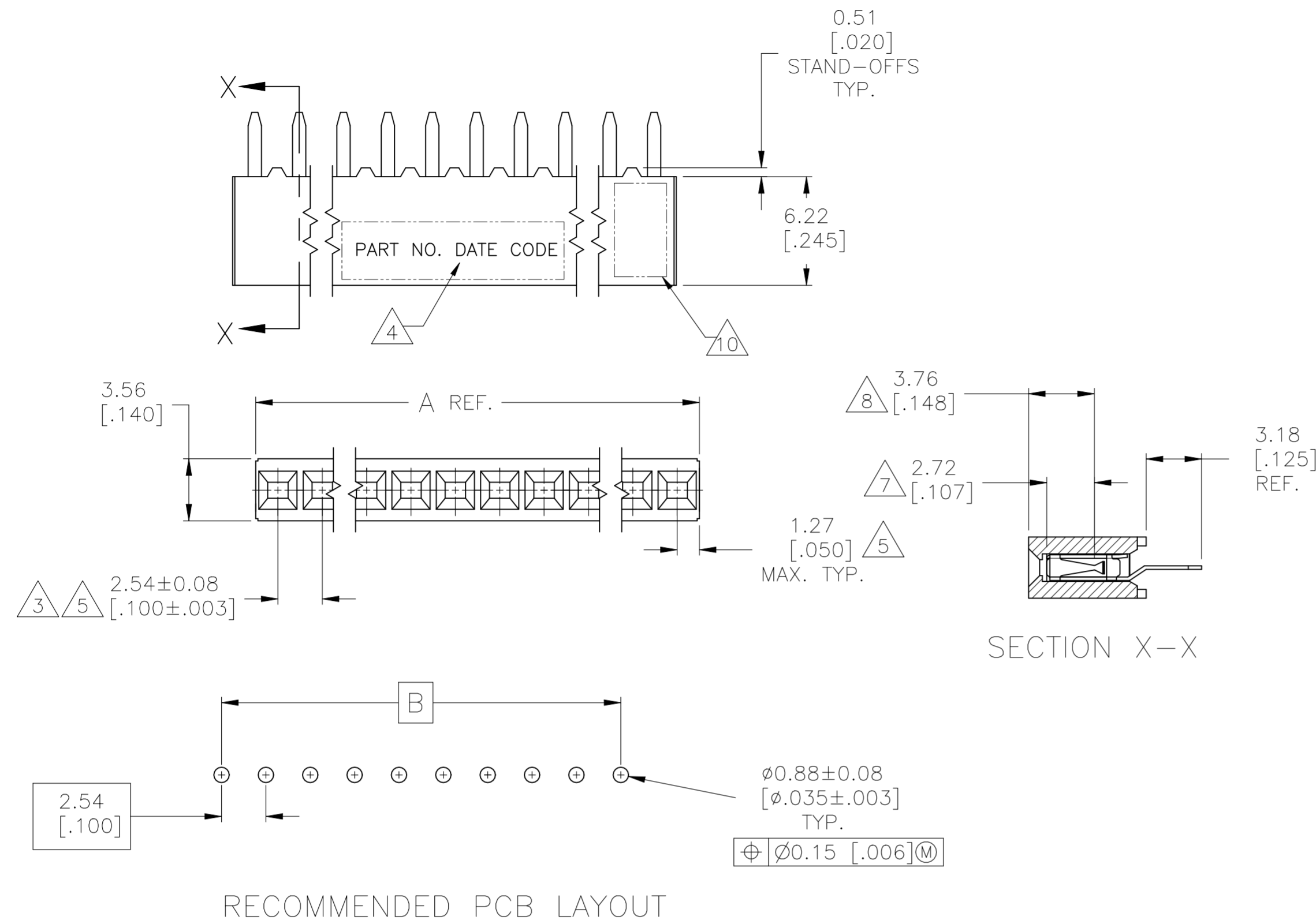


REVISIONS					
P	LTR	DESCRIPTION	DATE	DWN	APVD
M		RESIN SUPPLIER CHANGE FOR THE HOUSING	02DEC2021	SCB	KJK



OBSOLETE	B		A		NO OF POSN	FINISH	PART NUMBER
	mm	[INCHES]	mm	[INCHES]			
	2.54	[.100]	5.08	[.200]	2		3-146138-9
	96.52	[3.800]	99.06	[3.900]	39		3-146138-8
	93.98	[3.700]	96.52	[3.800]	38		3-146138-7
	91.44	[3.600]	93.98	[3.700]	37		3-146138-6
	88.90	[3.500]	91.44	[3.600]	36		3-146138-5
	86.36	[3.400]	88.90	[3.500]	35		3-146138-4
	83.82	[3.300]	86.36	[3.400]	34		3-146138-3
	81.28	[3.200]	83.82	[3.300]	33		3-146138-2
	78.74	[3.100]	81.28	[3.200]	32		3-146138-1
	76.20	[3.000]	78.74	[3.100]	31		3-146138-0
	73.66	[2.900]	76.20	[3.000]	30		2-146138-9
	71.12	[2.800]	73.66	[2.900]	29		2-146138-8
	68.58	[2.700]	71.12	[2.800]	28		2-146138-7
	66.04	[2.600]	68.58	[2.700]	27		2-146138-6
	63.50	[2.500]	66.04	[2.600]	26		2-146138-5
	60.96	[2.400]	63.50	[2.500]	25		2-146138-4
	58.42	[2.300]	60.96	[2.400]	24		2-146138-3
	55.88	[2.200]	58.42	[2.300]	23		2-146138-2
	53.34	[2.100]	55.88	[2.200]	22		2-146138-1
	50.80	[2.000]	53.34	[2.100]	21		2-146138-0
	48.26	[1.900]	50.80	[2.000]	20		1-146138-9
	45.72	[1.800]	48.26	[1.900]	19		1-146138-8
	43.18	[1.700]	45.72	[1.800]	18		1-146138-7
	40.64	[1.600]	43.18	[1.700]	17		1-146138-6
	38.10	[1.500]	40.64	[1.600]	16		1-146138-5
	35.56	[1.400]	38.10	[1.500]	15		1-146138-4
	33.02	[1.300]	35.56	[1.400]	14		1-146138-3
	30.48	[1.200]	33.02	[1.300]	13		1-146138-2
	27.94	[1.100]	30.48	[1.200]	12		1-146138-1
	25.40	[1.000]	27.94	[1.100]	11		146138-9
	22.86	[.900]	25.40	[1.000]	10		146138-8
	20.32	[.800]	22.86	[.900]	9		146138-7
	17.78	[.700]	20.32	[.800]	8		146138-6
	15.24	[.600]	17.78	[.700]	7		146138-5
	12.70	[.500]	15.24	[.600]	6		146138-4
	10.16	[.400]	12.70	[.500]	5		146138-3
	7.62	[.300]	10.16	[.400]	4		146138-2
	5.08	[.200]	7.62	[.300]	3		146138-1

- 1 HOUSING: FLAME RETARDANT, GLASS FILLED, POLYESTER, COLOR: BLACK. CONTACT: PHOSPHOR BRONZE
- 2 CONTACT: DUPLEX PLATED 0.25µm[.000010] MIN GOLD IN CONTACT AREA, 3.81-7.62µm[.000150-.000300] BRIGHT TIN-LEAD ON LEADS ALL OVER 1.27µm[.000050] NICKEL
- 3 THESE DIMENSIONS PERTAIN TO CAVITY CENTERLINES ONLY - NOT TO CONTACT LOCATIONS
- 4 MARK PART NUMBER AND DATE CODE IN APPROXIMATE LOCATION SHOWN, EITHER SIDE.
- 5 TOLERANCE IS NON-CUMULATIVE.
- 6 2 POSITION DATE CODE IS MARKED OPPOSITE SIDE OF TE CONNECTIVITY LOGO.
- 7 POINT-OF-MEASUREMENT DIMENSION FOR PLATING THICKNESS (INSIDE CONTACT BEAM).
- 8 POINT-OF-CONTACT DIMENSION.
- 9 NO PART NUMBER MARKING REQUIRED FOR THIS PART.
- 10 TE CONNECTIVITY LOGO AND CSA LOGO ARE MOLDED INTO HOUSING.
- 11 CONTACT: DUPLEX PLATED 0.25µm[.000010] MIN GOLD IN CONTACT AREA, 3.81-7.62µm[.000150-.000300] MATTE TIN ON LEADS, ALL OVER 1.27µm[.000050] MIN. NICKEL.
- 12 ROHS 2002/95/EC COMPLIANT

THIS DRAWING IS A CONTROLLED DOCUMENT.

DWN	M.BINNER	05NOV02
CHK	J.OLSON	05NOV02
APVD	J.OLSON	05NOV02

NAME: 108-25022
APPLICATION SPEC: 114-25018

MATERIAL: 1
FINISH: 2, 11

SIZE: A2
CAGE CODE: 00779
DRAWING NO: 146138
RESTRICTED TO: -

SCALE: 4:1
SHEET: 1 of 2
REV: M

REVISIONS					
P	LTR	DESCRIPTION	DATE	DWN	APVD
-		SEE SHEET 1	-	-	-

OBSOLETE	11	2.54 [.100]	5.08 [.200]	2	12	6	9	8-146138-9
	11	96.52 [3.800]	99.06 [3.900]	39	12			8-146138-8
	11	93.98 [3.700]	96.52 [3.800]	38	12			8-146138-7
	11	91.44 [3.600]	93.98 [3.700]	37	12			8-146138-6
	11	88.90 [3.500]	91.44 [3.600]	36	12			8-146138-5
	11	86.36 [3.400]	88.90 [3.500]	35	12			8-146138-4
	11	83.82 [3.300]	86.36 [3.400]	34	12			8-146138-3
	11	81.28 [3.200]	83.82 [3.300]	33	12			8-146138-2
	11	78.74 [3.100]	81.28 [3.200]	32	12			8-146138-1
	11	71.12 [2.800]	73.66 [2.900]	29	12			8-146138-0
	11	68.58 [2.700]	71.12 [2.800]	28	12			7-146138-9
	11	66.04 [2.600]	68.58 [2.700]	27	12			7-146138-8
	11	63.50 [2.500]	66.04 [2.600]	26	12			7-146138-7
	11	60.96 [2.400]	63.50 [2.500]	25	12			7-146138-6
	11	58.42 [2.300]	60.96 [2.400]	24	12			7-146138-5
	11	55.88 [2.200]	58.42 [2.300]	23	12			7-146138-4
	11	53.34 [2.100]	55.88 [2.200]	22	12			7-146138-3
	11	50.80 [2.000]	53.34 [2.100]	21	12			7-146138-2
	11	76.20 [3.000]	78.74 [3.100]	31	12			7-146138-1
	11	99.06 [3.900]	101.60 [4.000]	40	12			7-146138-0
	11	73.66 [2.900]	76.20 [3.000]	30	12			6-146138-9
	11	48.26 [1.900]	50.80 [2.000]	20	12			6-146138-8
	11	45.72 [1.800]	48.26 [1.900]	19	12			6-146138-7
	11	43.18 [1.700]	45.72 [1.800]	18	12			6-146138-6
	11	40.64 [1.600]	43.18 [1.700]	17	12			6-146138-5
	11	38.10 [1.500]	40.64 [1.600]	16	12			6-146138-4
	11	35.56 [1.400]	38.10 [1.500]	15	12			6-146138-3
	11	33.02 [1.300]	35.56 [1.400]	14	12			6-146138-2
	11	30.48 [1.200]	33.02 [1.300]	13	12			6-146138-1
	11	27.94 [1.100]	30.48 [1.200]	12	12			6-146138-0
	11	25.40 [1.000]	27.94 [1.100]	11	12			5-146138-9
	11	22.86 [.900]	25.40 [1.000]	10	12			5-146138-8
	11	20.32 [.800]	22.86 [.900]	9	12			5-146138-7
	11	17.78 [.700]	20.32 [.800]	8	12			5-146138-6
	11	15.24 [.600]	17.78 [.700]	7	12			5-146138-5
	11	12.70 [.500]	15.24 [.600]	6	12			5-146138-4
9	11	10.16 [.400]	12.70 [.500]	5	12			5-146138-3
9	11	7.62 [.300]	10.16 [.400]	4	12			5-146138-2
9	11	5.08 [.200]	7.62 [.300]	3	12			5-146138-1

FINISH	B	A	NO OF POSN	PART NUMBER
--------	---	---	------------	-------------

THIS DRAWING IS A CONTROLLED DOCUMENT.		DWN M.BINNER 05NOV02	TE TE Connectivity Ltd.	
DIMENSIONS: mm [INCHES]		CHK J.OLSON 05NOV02		
TOLERANCES UNLESS OTHERWISE SPECIFIED:		APVD J.OLSON 05NOV02	NAME REC ASSY, MOD IV, SR, .100 CL VRT BOARD MOUNT, CLOSED, TE SHORT PNT. OF CONTACT	
0 PLC ± - 1 PLC ± - 2 PLC ± 0.25[.010] 3 PLC ± 0.13[.005] 4 PLC ± - ANGLES ± -		PRODUCT SPEC 108-25022	SIZE A2	
MATERIAL 1		APPLICATION SPEC 114-25018	CAGE CODE 00779	DRAWING NO C=146138
FINISH 2 11		WEIGHT -	RESTRICTED TO -	SCALE 4:1
CUSTOMER DRAWING			SHEET 2 OF 2	REV M

单击下面可查看定价，库存，交付和生命周期等信息

[>>TE Connectivity\(泰科\)](#)