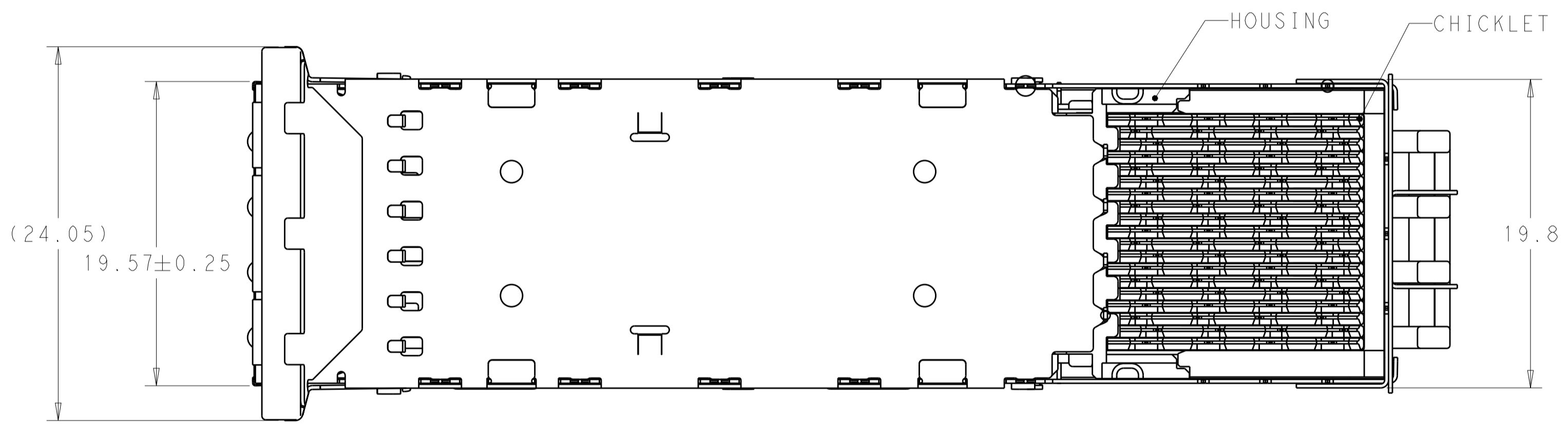
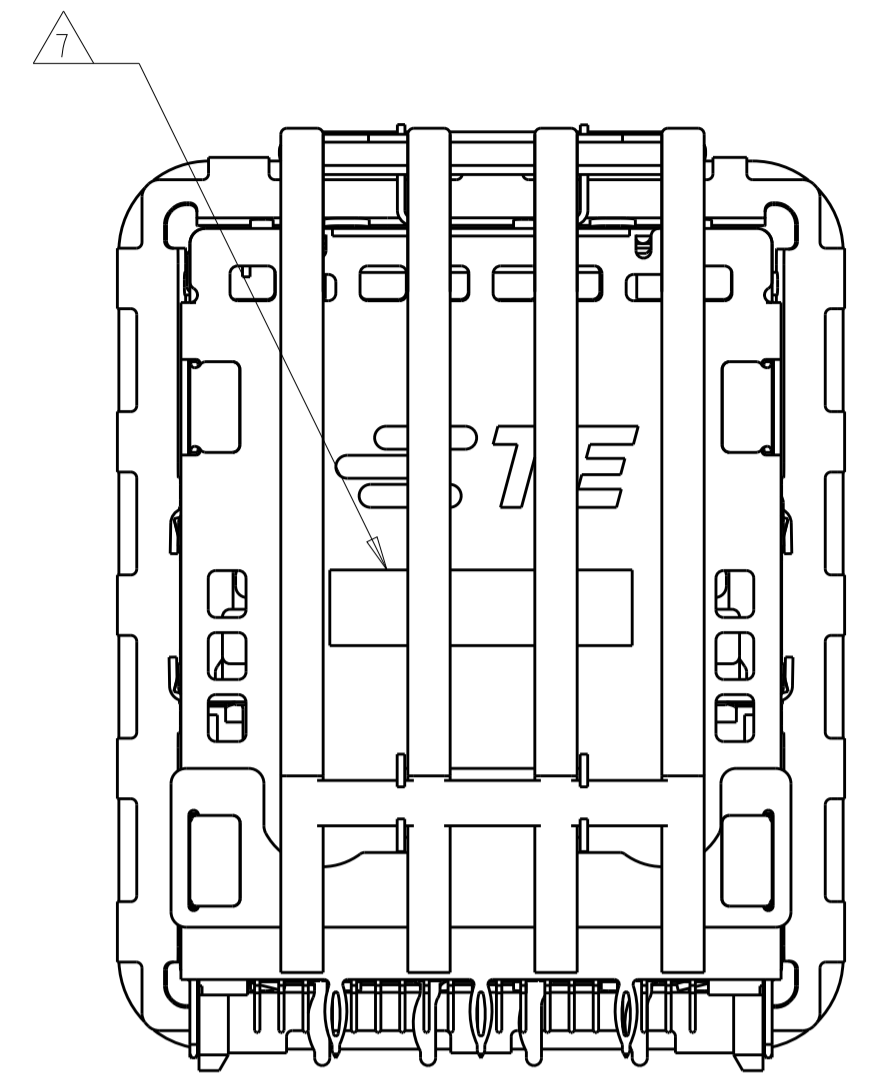
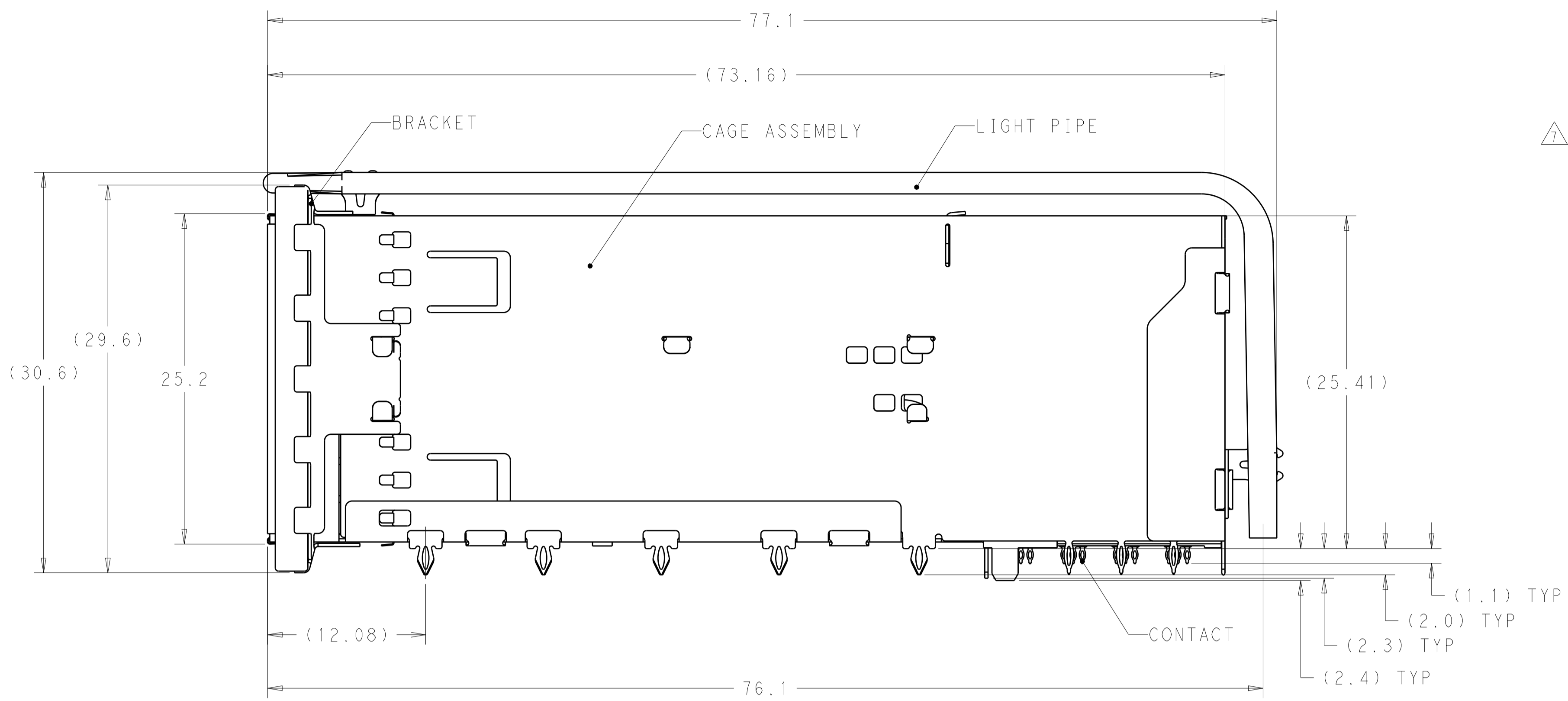
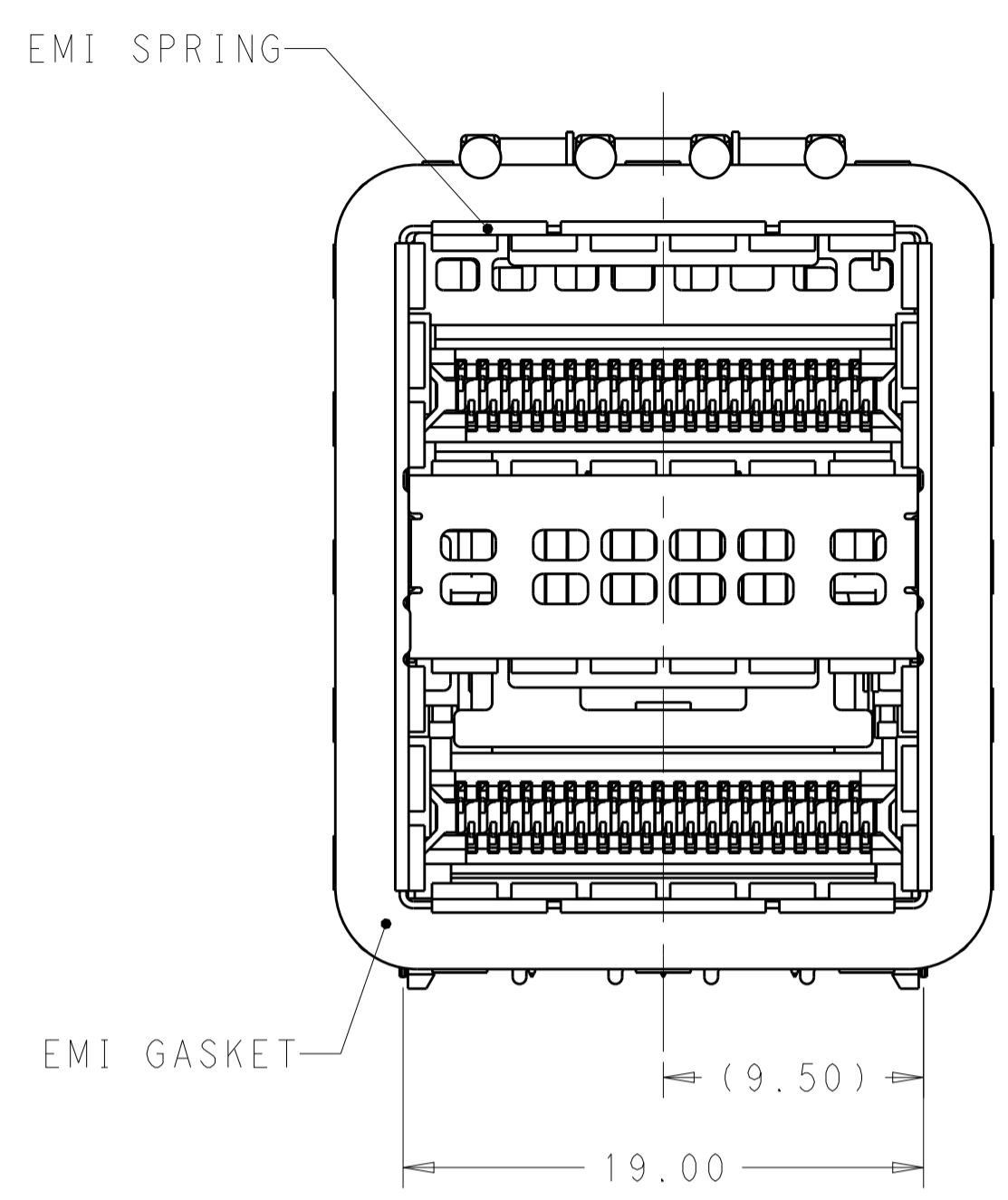


REVISIONS				
P.	LTN	DESCRIPTION	DATE	DWN APVD
1		INITIAL RELEASED	17OCT13	KD JY
2		REVISED TABS BENDED DIRECTION PER ACTUAL	30MAR2015	TX JY



1. MATERIALS:
 CAGE ASSEMBLY- NICKEL SILVER ALLOY PER ASTM B 122.
 BRACKET- STAINLESS STEEL.
 EMI SPRING- COPPER ALLOY, NICKEL PLATED.
 EMI GASKET- PLATED FILLED SILICONE WITH 94V-0.
 HOUSING- POLYESTER LCP WITH 94V-0.
 CHICKLET- POLYESTER LCP WITH 94V-0.
 CONTACT- COPPER ALLOY.
 LIGHTPIPE- POLYCARBONATE WITH 94V-0.

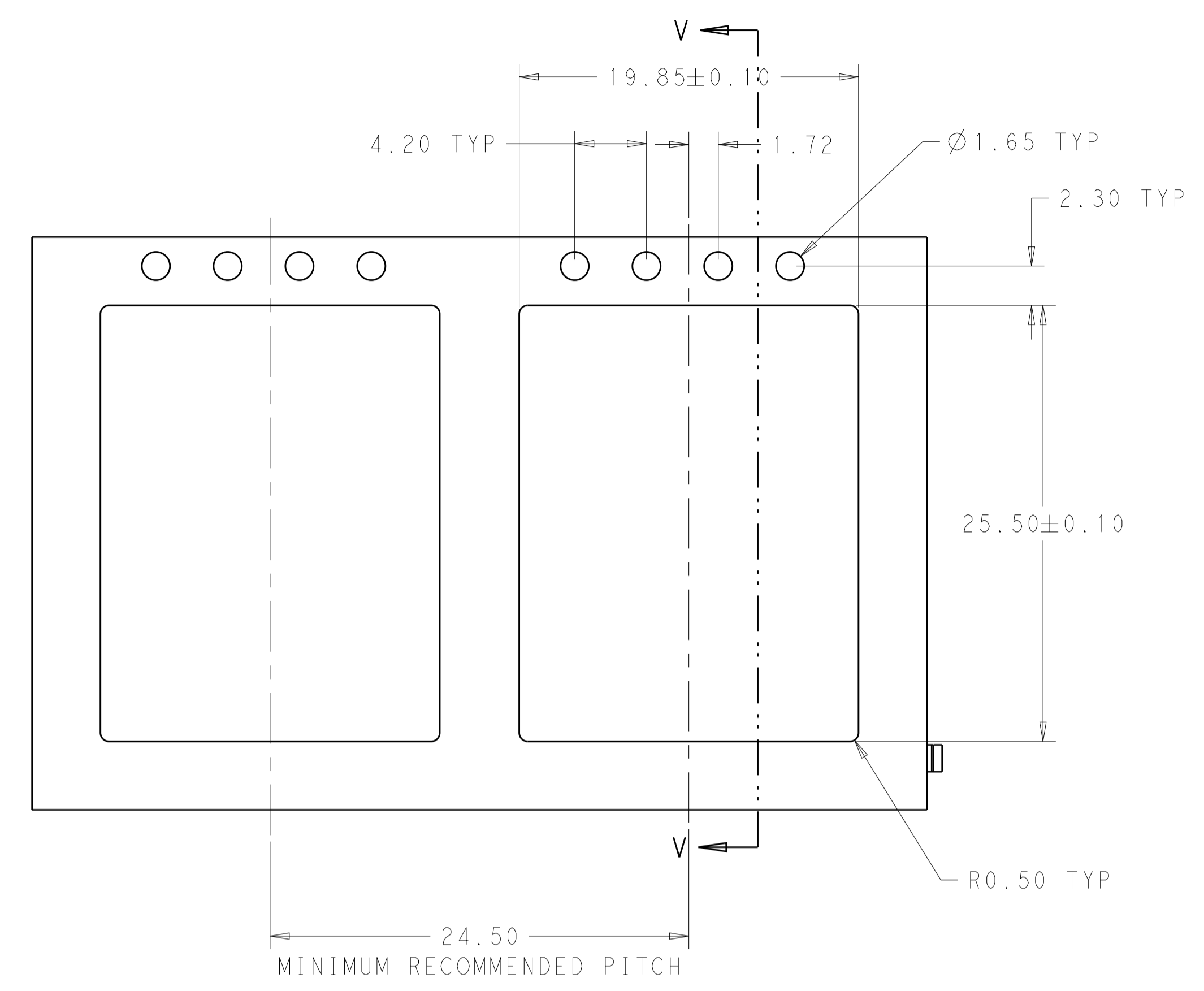
- 2 CONTACT FINISH: 0.76µm GOLD ON MATING END, 1.25µm MATT TIN ON SOLDER TAIL, ALL OVER 1.27µm NICKEL.
 3 DATUM AND BASIC DIMENSION ESTABLISHED BY CUSTOMER.
 4. MINIMUM PCB THICKNESS: 1.57mm.
 5 THE ENTIRE AREA OF THE CONNECTOR FOOTPRINT, INDICATED BY THE DASHED LINE, TO BE CONSIDERED THE KEEPOUT AREA FOR COMPONENTS.
 6 CROSS-HATCHED AREAS REPRESENT ZONES ON THE PCB THAT COME IN CONTACT WITH OR BE IN CLOSE PROXIMITY TO THE PLASTIC HOUSING OR THE CONNECTOR CAGE. INDICATED AREAS TO BE CONSIDERED TRACE FREE.
 7 PART NUMBER AND DATE CODE MARKED IN APPROXIMATE AREA SHOWN.
 8 HATCHED AREA IS PLACEMENT ZONE FOR LED. LED SHOULD BE CENTERED WITHIN ZONE. RECOMMEND 0805 PACKAGE.
 9 CONTACT FINISH: 0.08µm MINIMUM GOLD OVER 0.68µm PALLADIUM-NICKEL ON MATING END, 1.25µm MATT TIN ON SOLDER TAIL, ALL OVER 1.27µm NICKEL.

PRELIMINARY - NOT RELEASED FOR PRODUCTION

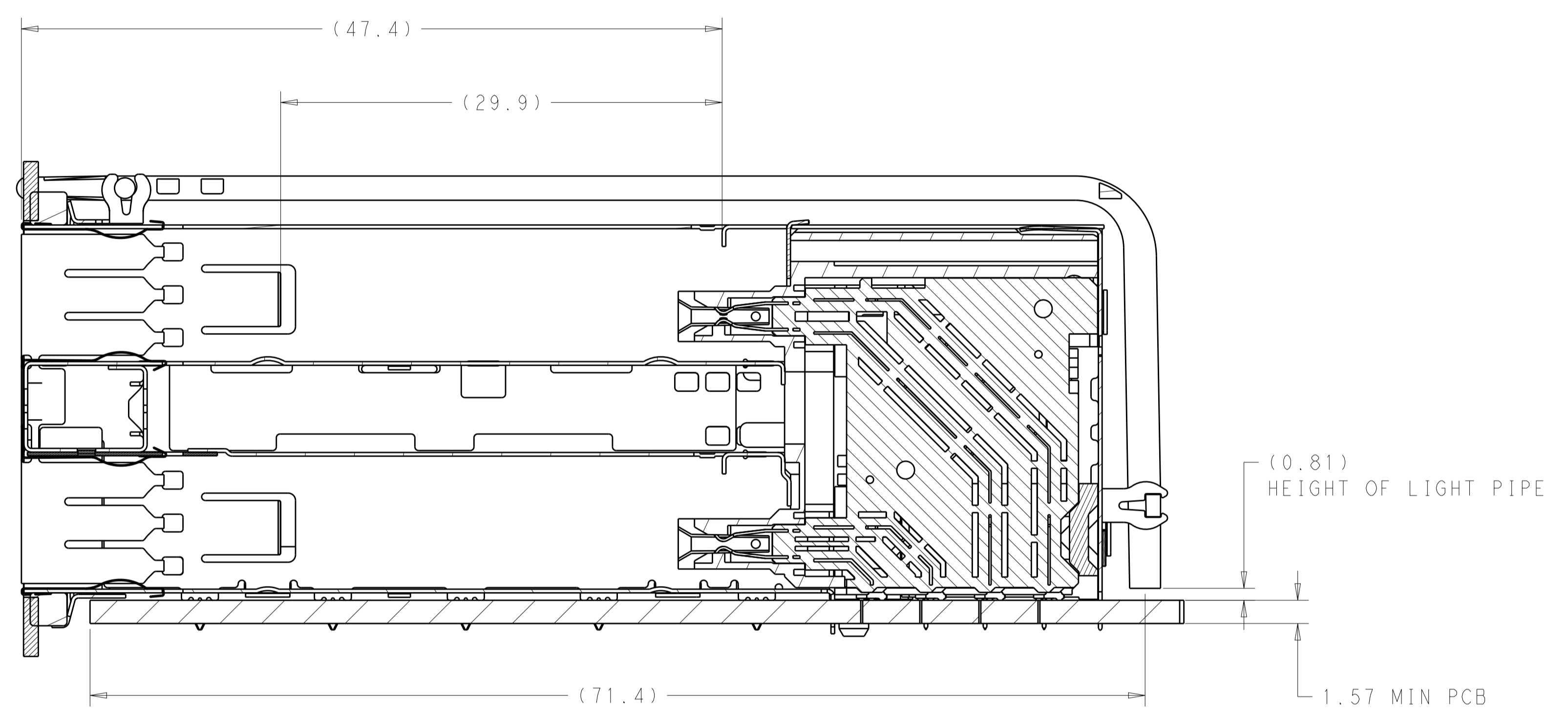
THIS PRODUCT HAS NOT COMPLETED VALIDATION AND QUALIFICATION TESTING

THIS DRAWING IS A CONTROLLED DOCUMENT.		DWN: REVIN DING 17OCT13	TE Connectivity CAGE AND CONNECTOR ASSEMBLY, WITH EMI GASKET, 2X1 THERMAL FOOTPRINT, ZQSFP+STACKED
DIMENSIONS: mm		CHK: JASON YANG 17OCT13	
TOLERANCES UNLESS OTHERWISE SPECIFIED:		APVD: JASON YANG 17OCT13	
0 PLC ±0.25 1 PLC ±0.15 2 PLC ±0.13 3 PLC ±0.001 4 PLC ±0.0001 ANGLES ±0.7°		NAME: JASON YANG	
MATERIAL: SEE NOTE 1	FINISH: SEE NOTE 2	WEIGHT: -	SIZE: A100779C=2170608
Customer Drawing		SCALE: 4:1	SHEET 1 OF 4 REV 2

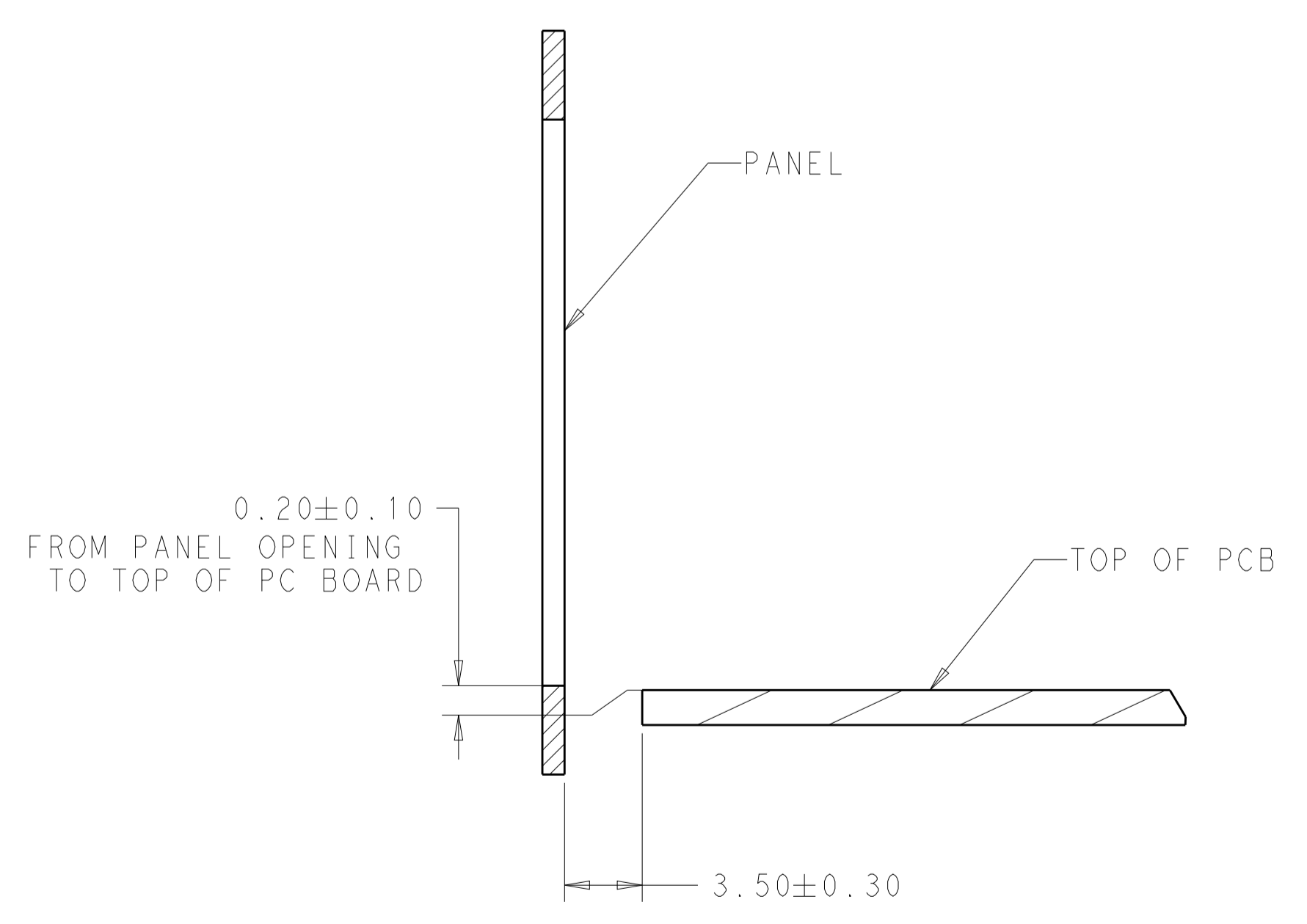
REVISIONS				
P.	LTN.	DESCRIPTION	DATE	APVD.
-	-	SEE SHEET 1	-	-



RECOMMEND PANEL CUTOUT AND PC BOARD, PANEL POSITION



SECTION V-V
SCALE 4:1



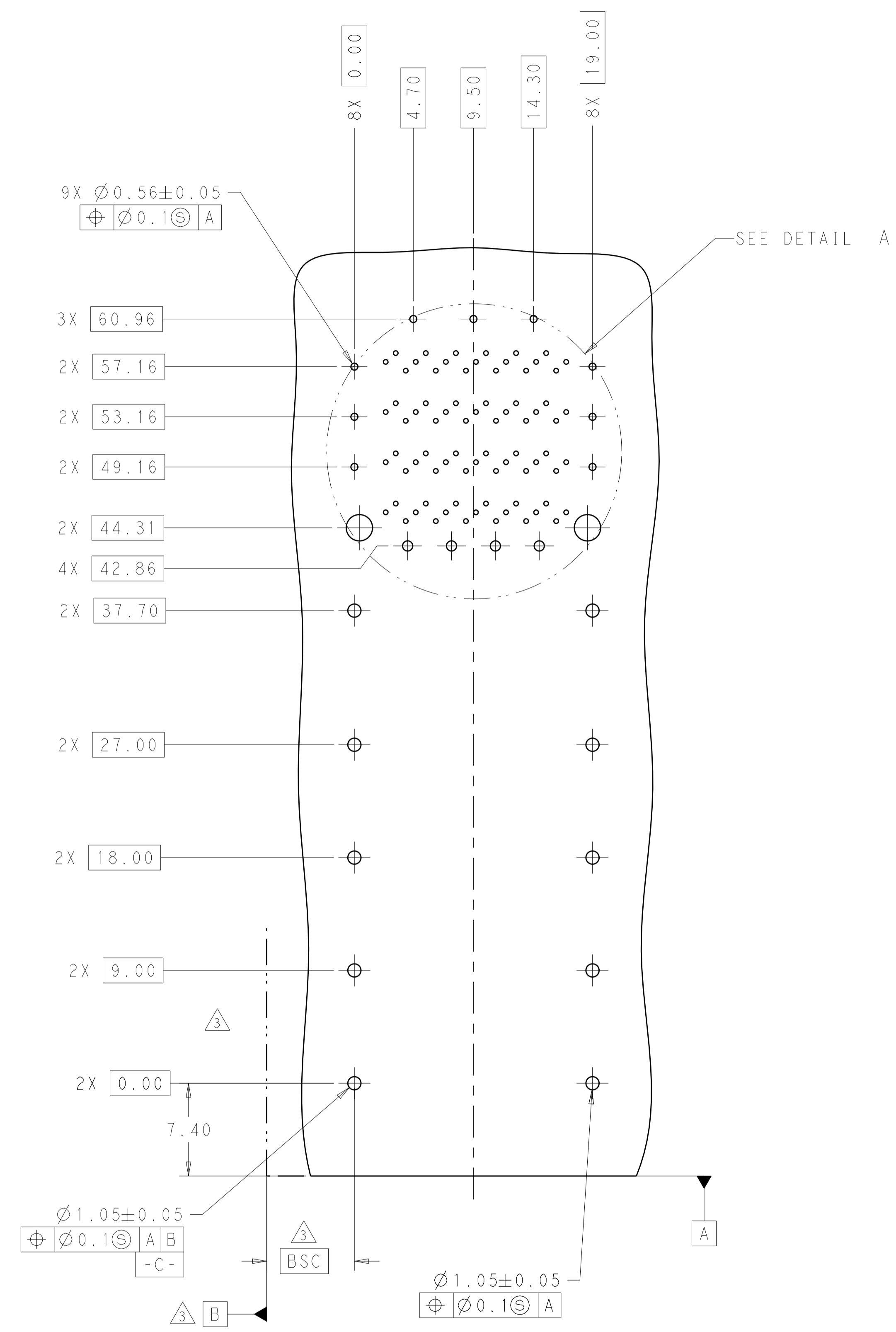
SECTION V-V
SCALE 4:1

THIS PRODUCT HAS NOT COMPLETED VALIDATION AND QUALIFICATION TESTING

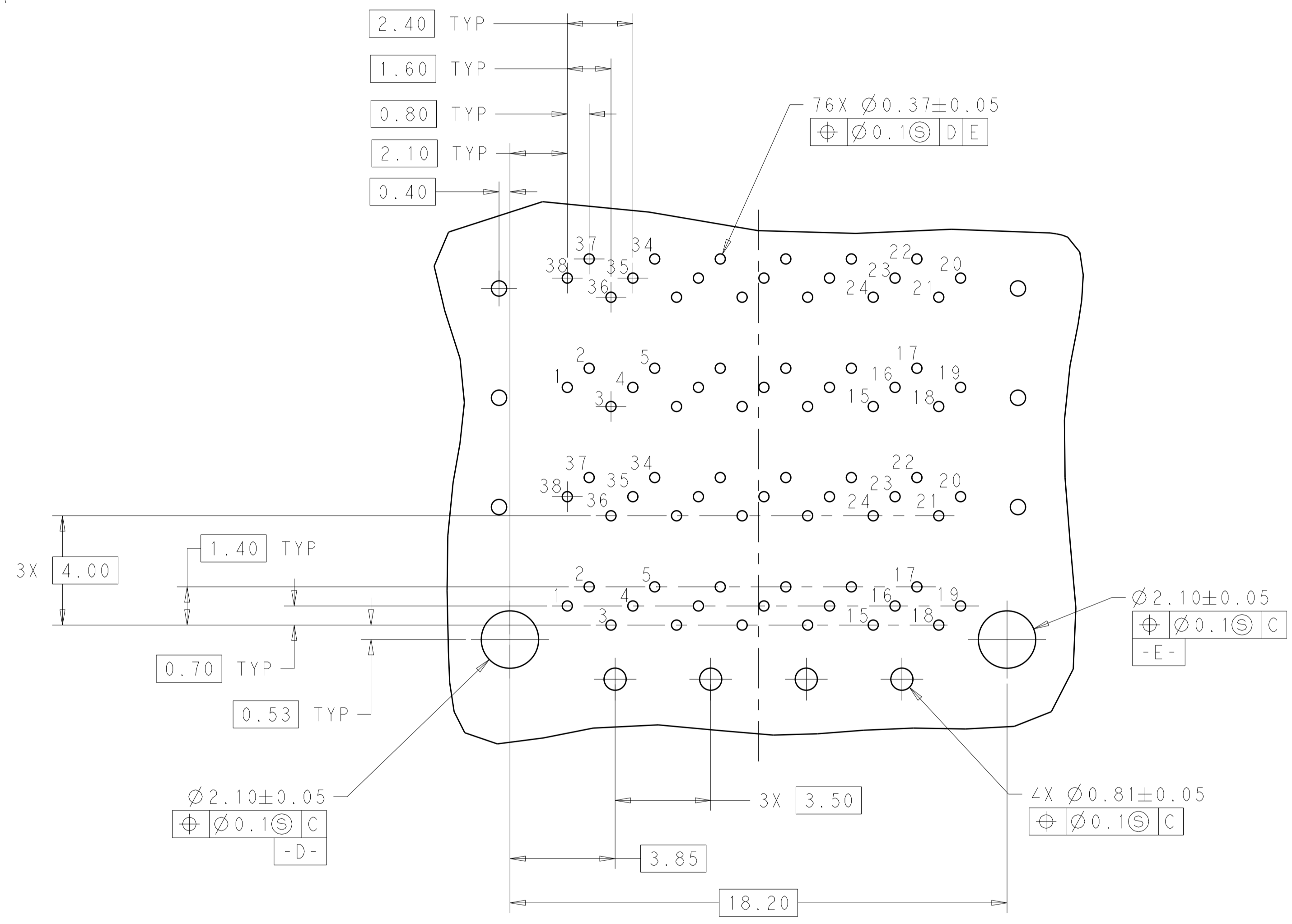
PRELIMINARY - NOT RELEASED FOR PRODUCTION

THIS DRAWING IS A CONTROLLED DOCUMENT.		OWN: REVIN DING 170CT13	TE Connectivity
DIMENSIONS: mm		CHK: JASON YANG 170CT13	
TOLERANCES UNLESS OTHERWISE SPECIFIED:		APVD: JASON YANG 170CT13	NAME: CAGE AND CONNECTOR ASSEMBLY, WITH EMI GASKET, 2X1, THERMAL FOOTPRINT, ZQSFP+STACKED
0 PLC ±	1 PLC ±0.25	PRODUCT SPEC	SIZE: A100779
2 PLC ±0.15	3 PLC ±0.013	APPLICATION SPEC	CAGE CODE: C=2170608
4 PLC ±0.0001	ANGLES ±0.001	WEIGHT	SCALE: 4:1
MATERIAL: SEE NOTE 1	FINISH: SEE NOTE 2	Customer Drawing	SHEET 2 OF 4
			REV 2

REVISIONS				
P.	LTN	DESCRIPTION	DATE	APP'D
-	-	SEE SHEET 1	-	-



RECOMMENDED PC BOARD LAYOUT
 COMPONENT SIDE OF BOARD
 PCB TOLERANCE: ± 0.05



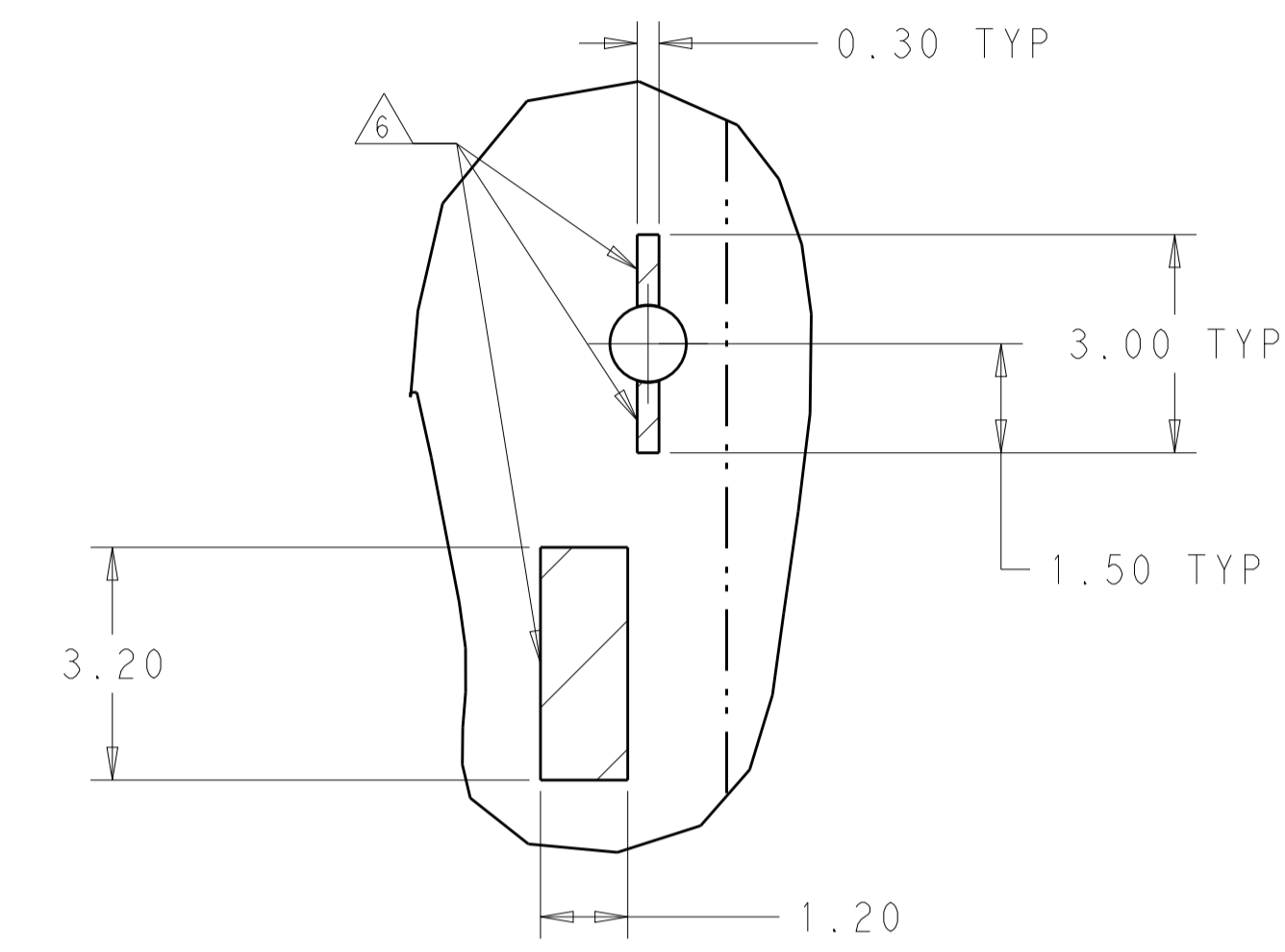
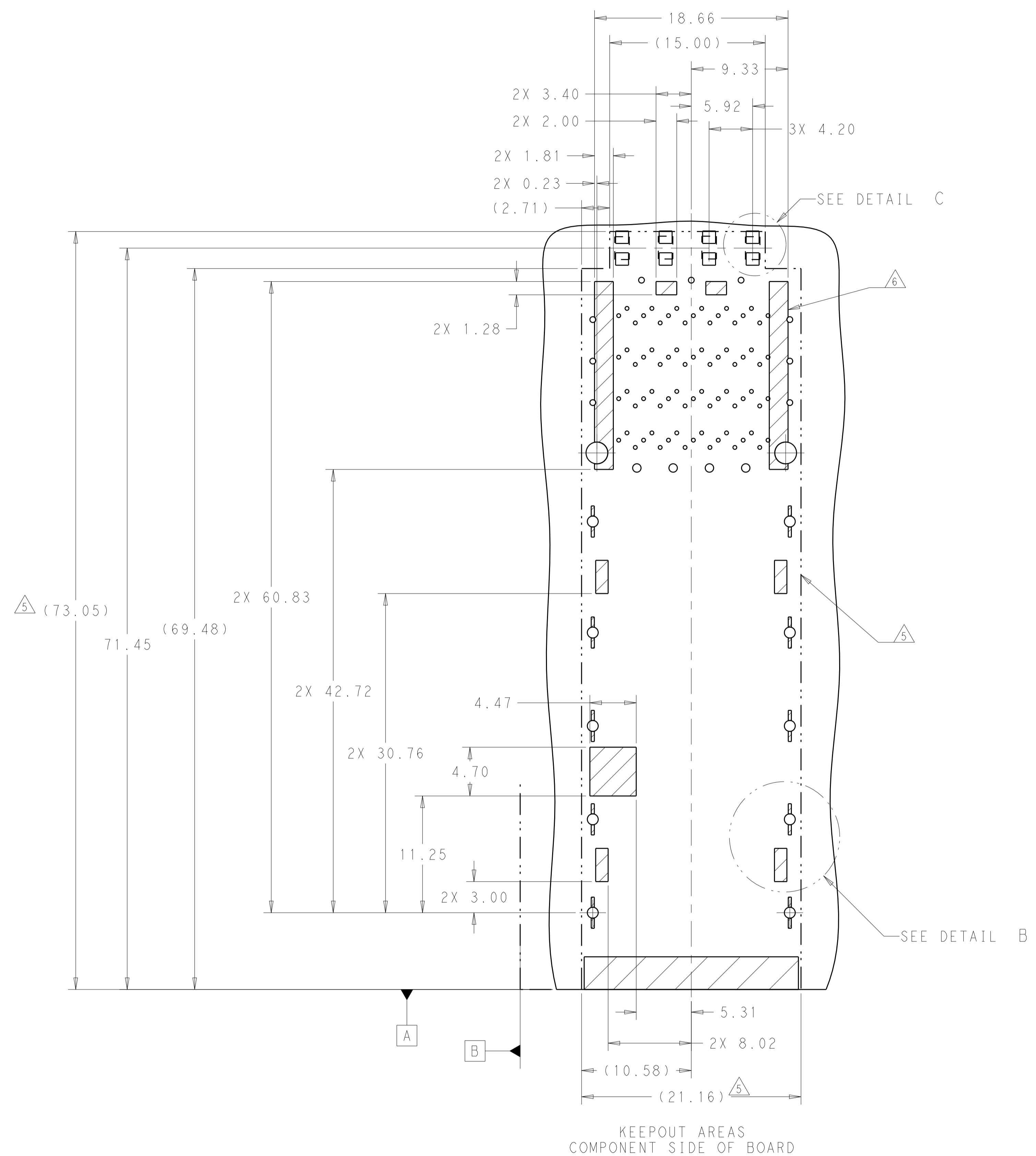
DETAIL A
 SCALE 8:1

PRELIMINARY - NOT RELEASED FOR PRODUCTION

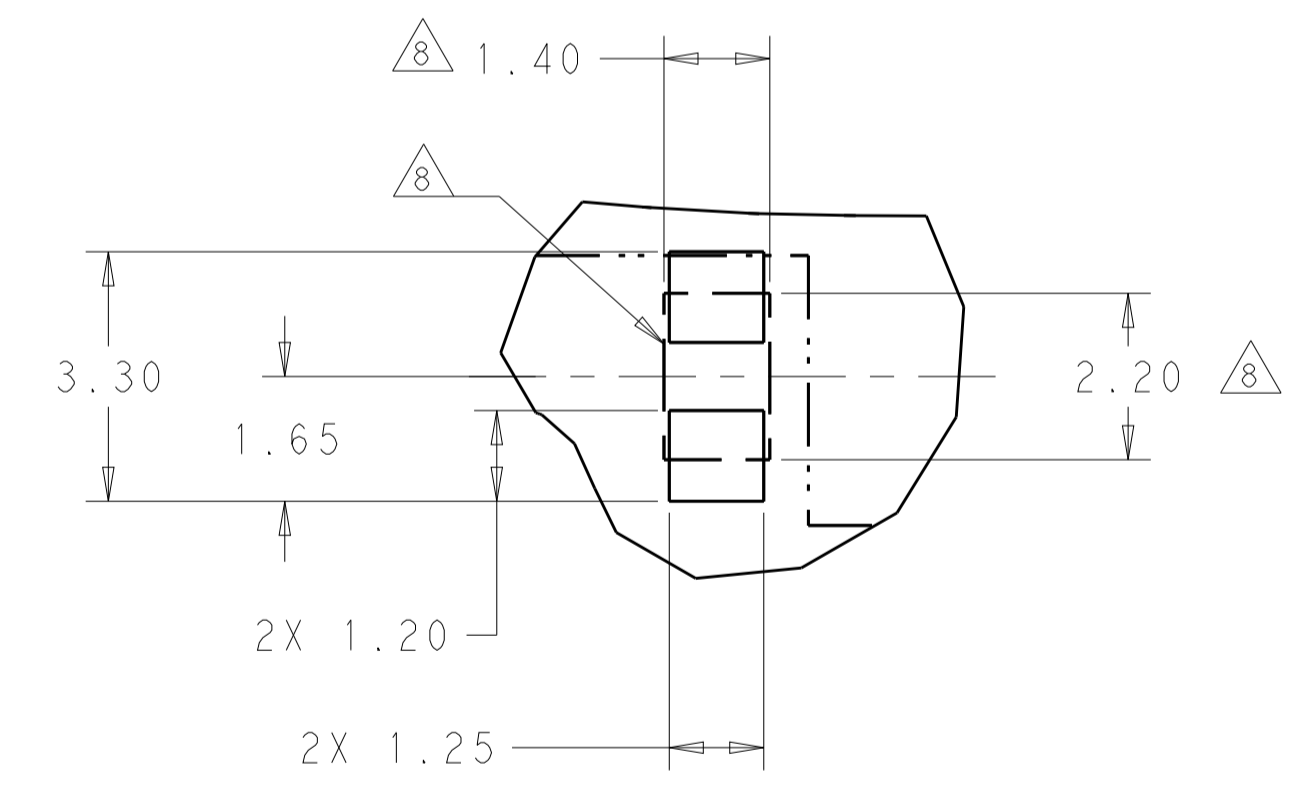
THIS PRODUCT HAS NOT COMPLETED VALIDATION AND QUALIFICATION TESTING

THIS DRAWING IS A CONTROLLED DOCUMENT.		OWN: REVIN DING 170CT13	TE Connectivity
DIMENSIONS: mm		CHK: JASON YANG 170CT13	
		APVD: JASON YANG 170CT13	NAME: CAGE AND CONNECTOR ASSEMBLY, WITH EMI GASKET, 2X1, THERMAL FOOTPRINT, ZQSFP+STACKED
TOLERANCES UNLESS OTHERWISE SPECIFIED:		PRODUCT SPEC:	SIZE: CAGE CODE DRAWING NO: A100779C=2170608
0 PLC ± 0.25 1 PLC ± 0.15 2 PLC ± 0.13 3 PLC ± 0.10 4 PLC ± 0.08 ANGLES ± 0.0001		APPLICATION SPEC:	RESTRICTED TO:
MATERIAL: SEE NOTE 1		WEIGHT:	SCALE: 4:1 SHEET 3 OF 4 REV 2
FINISH: SEE NOTE 2		Customer Drawing	

REVISIONS				
P.	LTN.	DESCRIPTION	DATE	APPD.
-	-	SEE SHEET 1	-	-



DETAIL B
SCALE 10:1



DETAIL C
SCALE 10:1

PRELIMINARY - NOT RELEASED FOR PRODUCTION

THIS PRODUCT HAS NOT COMPLETED VALIDATION AND QUALIFICATION TESTING

THIS DRAWING IS A CONTROLLED DOCUMENT.		OWN: REVIN DING 170CT13	TE Connectivity
DIMENSIONS: mm		CHK: JASON YANG 170CT13	
TOLERANCES UNLESS OTHERWISE SPECIFIED:		APPD: JASON YANG 170CT13	NAME: CAGE AND CONNECTOR ASSEMBLY, WITH EMI GASKET, 2X1, THERMAL FOOTPRINT, ZQSFP+STACKED
0 PLC ±0.25	1 PLC ±0.15	PRODUCT SPEC	RESTRICTED TO
2 PLC ±0.13	3 PLC ±0.013	APPLICATION SPEC	SIZE: A100779
4 PLC ±0.0001	ANGLES ±0.2°	WEIGHT	CAGE CODE: C=2170608
MATERIAL: SEE NOTE 1	FINISH: SEE NOTE 2	Customer Drawing	SCALE: 4:1 SHEET 4 OF 4 REV 2

单击下面可查看定价，库存，交付和生命周期等信息

[>>TE Connectivity\(泰科\)](#)