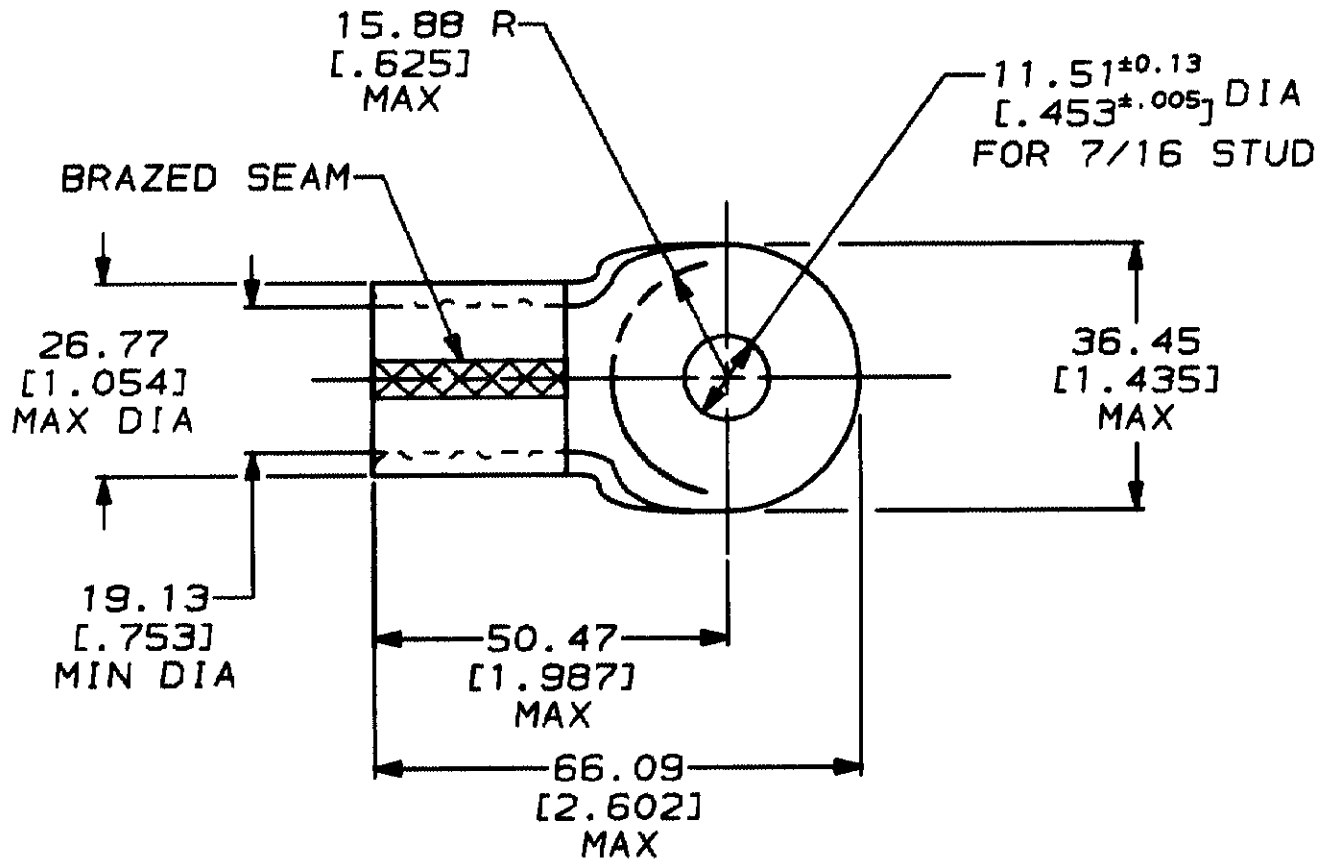


LOC	DIST	P	F	LTR	DESCRIPTION	DATE	APPROVED
G	14			D	REVISED & REDRAWN PER G-5803	6/12/92	DKS / AJK

THIS DRAWING IS UNPUBLISHED. RELEASED FOR PUBLICATION BY AMP INCORPORATED. ALL INTERNATIONAL RIGHTS RESERVED. © COPYRIGHT 19



322253
PART NO

DO NOT SCALE PRINT. UNLESS SPECIFIED DIMENSIONS IN mm (IN) TOLERANCES ON: 2 PLC DEC ± 0.20(.008) 3 PLC DEC ± - ANGLES ± -	DR 6/12/92 DK SCHUM	AMP AMP Incorporated Harrisburg, PA 17105-3608
	CHK 6/26/92 RD HEIM	
MATERIAL COPPER ASTM B-152 ANNEALED	APPD 6/26/92 AJ KAUFMAN	NAME TERMINAL, RING TONGUE, SOLISTRAND™ WIRE SIZE: 127.0-152.0mm ² [250-300] MCM
	APPD 6/26/92 CR RHODAS	
FINISH TIN PLATE 0.00254 [.0001007] MIN THK PER MIL-T-10727	PRODUCT SPEC -	SIZE A
APPLICATION SPEC -	WEIGHT -	CAGE CODE 00779
		DRAWING NO C-322253
		SCALE 1:1
		SHEET 1 of 1

单击下面可查看定价，库存，交付和生命周期等信息

[>>TE Connectivity\(泰科\)](#)