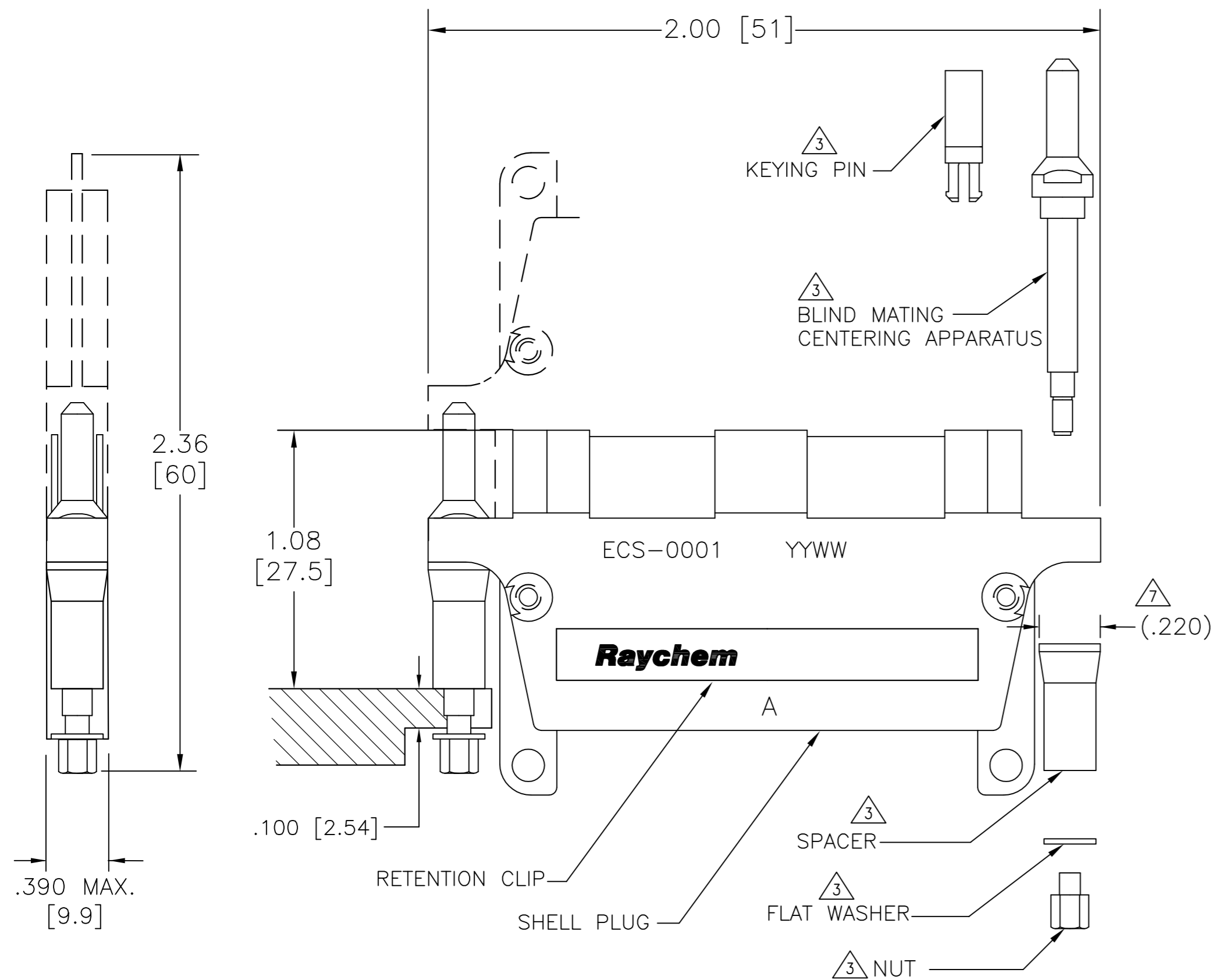


THIS DRAWING IS UNPUBLISHED. RELEASED FOR PUBLICATION  
 © COPYRIGHT - By - ALL RIGHTS RESERVED.

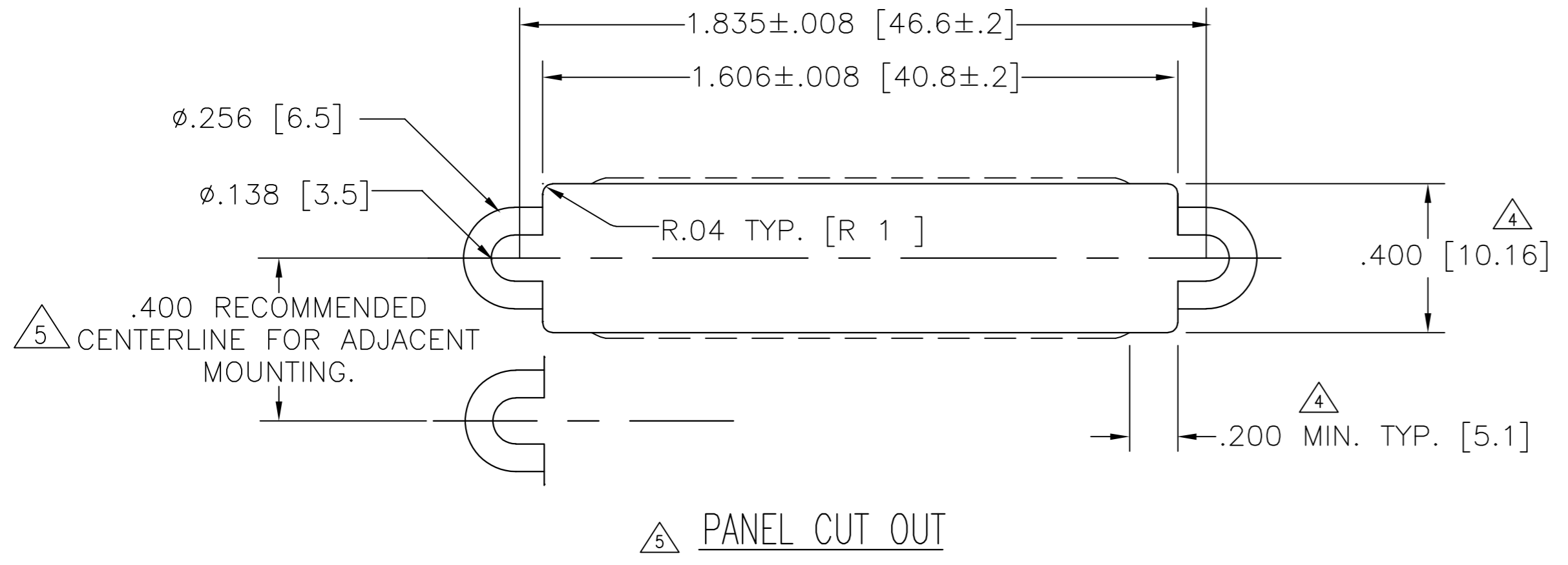
LOC		DIST		REVISIONS			
P	LTR	DESCRIPTION	DATE	DWN	APVD		
	H	ECO-13-012568	14AUG13	KG	MS		



NOTES:

- MATERIAL:
  - A) SHELL PLUG ALUMINUM ALLOY PER QQ-A-591
  - B) RETENTION CLIP COPPER ALLOY 172 PER QQ-C-533
  - C) BLIND MATING CENTERING APPARATUS STAINLESS STEEL PER QQ-S-763, 300 SERIES
  - D) NUT STAINLESS STEEL PER QQ-S-763, 300 SERIES
  - E) SPACER STAINLESS STEEL PER QQ-S-763, 300 SERIES
  - F) FLAT WASHER STAINLESS STEEL PER QQ-S-763 OR QQ-S-766, 300 SERIES
  - G) KEYING PIN HIGH GRADE POLYARYLENE THERMOPLASTIC, MOLDED
- FINISH:
  - A) SHELL PLUG CADMIUM PLATED PER QQ-P-416 OVER NICKEL UNDERPLATE
  - B) RETENTION CLIP CADMIUM PLATED PER QQ-P-416
  - C) BLIND MATING CENTERING APPARATUS CADMIUM PLATED PER QQ-P-416
  - D) NUT CADMIUM PLATED PER QQ-P-416
  - E) SPACER CADMIUM PLATED PER QQ-P-416
  - F) FLAT WASHER CADMIUM PLATED PER QQ-P-416

- 3 THESE ITEMS ARE SUPPLIED UNASSEMBLED.
- 4 THE DIMENSION OF .400 WIDTH MUST BE MAINTAINED FOR .200 MINIMUM LENGTH EACH SIDE FOR PROPER ALIGNMENT. AFTER THAT VARIATION IN .400 DIMENSION IS PERMISSIBLE.
- 5 PANEL CUT OUT FOR STACKING CONDITION MAY VARIES, DEPENDING ON THE APPLICATION.
- 6 MATING CONNECTOR: ECS-0005
- 7 LARGER DIAMETER END (.220) REF OF TAPERED SPACER TO BE ORIENTED TOWARDS SHELL FLANGE DURING ASSEMBLY AT 2 PLACES.



THIS DRAWING IS A CONTROLLED DOCUMENT.		DWN	13AUG2013		TE Connectivity		
DIMENSIONS: INCHES [mm]		CHK	13AUG2013		NAME		
TOLERANCES UNLESS OTHERWISE SPECIFIED:		M.SPICER		1 - INCH PLUG, BLIND MATING MTC SERIES			
0 PLC ± -		M.SPICER		SIZE			
1 PLC ± -		M.SPICER		CAGE CODE			
2 PLC ± .02 [0.5]		M.SPICER		DRAWING NO			
3 PLC ± .005 [0.13]		M.SPICER		RESTRICTED TO			
4 PLC ± -		M.SPICER		A2 00779 C-ECS-0001			
ANGLES ± -		M.SPICER		SCALE NTS SHEET 1 OF 1 REV H			
FINISH		M.SPICER		WEIGHT .044 LB [20.0] GRAMS			
MATERIAL		M.SPICER		CUSTOMER DRAWING			

单击下面可查看定价，库存，交付和生命周期等信息

[>>TE Connectivity\(泰科\)](#)