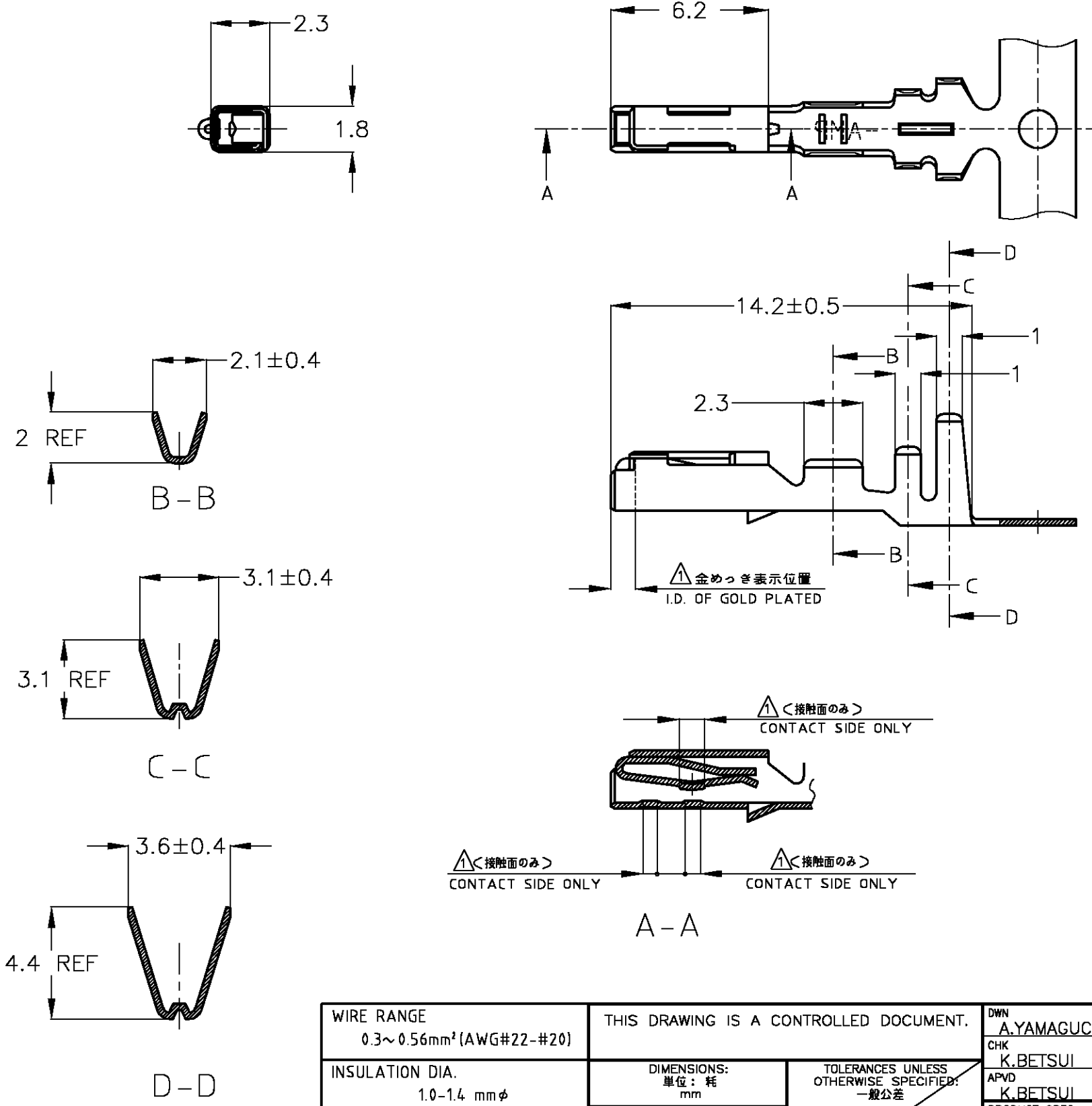


THIS DRAWING IS UNPUBLISHED. RELEASED FOR PUBLICATION
 © COPYRIGHT 2003 BY TYCO ELECTRONICS CORPORATION. ALL RIGHTS RESERVED.

| LOC | DIST | REVISIONS | | | | | |
|-----|------|-----------|---------|---------------|---------|-----|------|
| J | — | P | LTR | DESCRIPTION | DATE | DWN | APVD |
| | | 02 | REVISED | ECR-06-026280 | 08NOV06 | TS | KB |



△部分金めっき
 2. 圧着規格 114-5133

△SELECTIVE GOLD
 2. CRIMP SPEC. 114-5133

| | |
|------------------------|----------|
| △SELECTIVE GOLD 部分金めっき | 175094-2 |
| PRE-TINNED 錫めっき済 | 175094-1 |
| FINISH 仕上げ | PN 型番 |

| | | | |
|---|---|--|--|
| WIRE RANGE 0.3~0.56mm ² (AWG#22-#20) | THIS DRAWING IS A CONTROLLED DOCUMENT. | DWN A.YAMAGUCHI 09JUL03 | Tyco Electronics AMP K.K. Kawasaki, Japan |
| INSULATION DIA. 1.0-1.4 mmφ | DIMENSIONS: 単位: 耗 mm | CHK K.BETSUI 09JUL03 | |
| TOLERANCE UNLESS OTHERWISE SPECIFIED: 一般公差 | TOLERANCES UNLESS OTHERWISE SPECIFIED: 一般公差 | APVD K.BETSUI 09JUL03 | NAME 名称 040 SERIES RECEPTACLE CONTACT |
| 0 < x ≤ 10 : ±0.2 10 < x ≤ 30 : ±0.25 30 < x ≤ 100 : ±0.3 | 0 PLC ±- 1 PLC ±- 2 PLC ±- 3 PLC ±- 4 PLC ±- ANGLES ±- | PRODUCT SPEC 製品規格 | SIZE A3 |
| ANGLE ; 角度 : ±3° | MATERIAL 材料 KLE-5 THICKNESS; 0.25 | APPLICATION SPEC 取付適用規格 SEE NOTE | CAGE CODE 00779 |
| | FINISH 仕上 SEE TABLE | WEIGHT - | DRAWING NO 番号 C-175094 |
| | | CUSTOMER DRAWING | RESTRICTED TO - |
| | | | SCALE 尺度 5:1 |
| | | | SHEET 1 OF 1 |
| | | | REV 02 |

单击下面可查看定价，库存，交付和生命周期等信息

[>>TE Connectivity\(泰科\)](#)