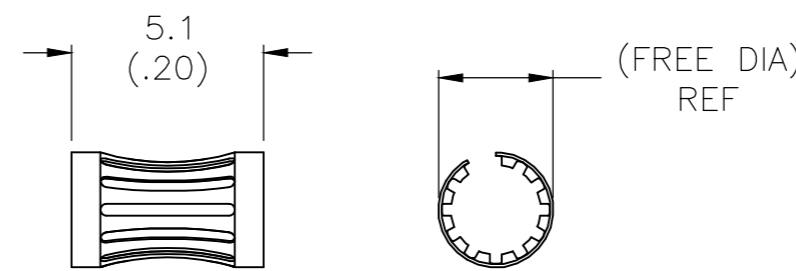
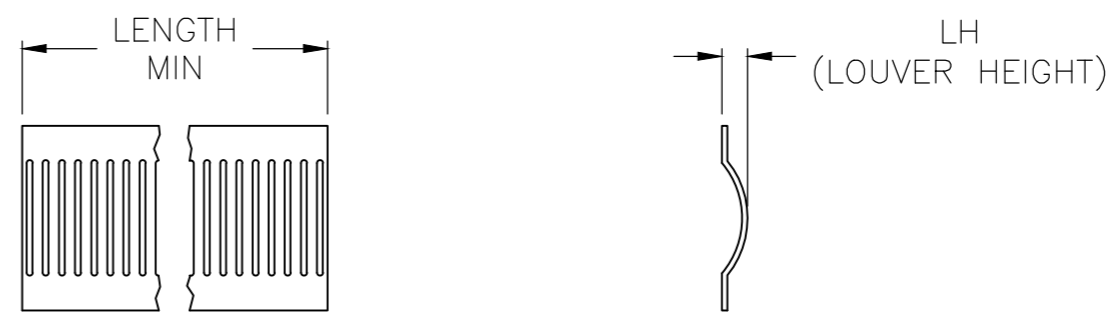


THIS DRAWING IS UNPUBLISHED. RELEASED FOR PUBLICATION
 © COPYRIGHT - By - ALL RIGHTS RESERVED.

P	LTR	DESCRIPTION	DATE	DWN	APVD
V		REVISED PER ECO-17-013721	16NOV2017	RS	MZ
W		REVISED PER ECO-18-007230	10MAY2018	RS	MZ
W1		REVISED PER ECO-20-003926	14APR2020	RK	MZ



STYLE A
(FEMALE)



STYLE C
(STRIP)

STYLE	(FREE DIA)	LH	LENGTH	MAT'L (NOTE)	MATING PIN ϕ REF	PLATING NOTE NO.	NUM LOUV	MAT'L THK	REF	PART NO.	STATUS
A	.83	.022	--	12	19 [.750]	3-2	82	0.12 [.005]	05043	5-192046-0	OBSOLETE
A	.83	.022	--	12	19 [.750]	UNPL	82	0.12 [.005]	05115	4-192046-9	OBSOLETE
A	.76	.022	--	12	16.8 [.660]	UNPL	75	0.12 [.005]	05141	4-192046-8	OBSOLETE
A	.73	.016	--	13	15.9 [.625]	3-2	71	0.12 [.005]	05175	4-192046-7	OBSOLETE
A	.73	.018	--	12	15.9 [.625]	4-2	71	0.12 [.005]	05174	4-192046-6	OBSOLETE
A	.73	.022	--	12	15.3 [.602]	3-2	67	0.12 [.005]	05049	4-192046-5	OBSOLETE
A	.73	.022	--	12	15.2 [.600]	UNPL	67	0.12 [.005]	05065	4-192046-4	OBSOLETE
A	.73	.018	--	12	14.8 [.584]	3-2	65	0.15 [.006]	05022	4-192046-3	OBSOLETE
A	.70	.018	--	12	13 [.514]	UNPL	58	0.12 [.005]	05102	4-192046-2	OBSOLETE
A	.57	--	--	12	12.7 [.500]	1-2	57	0.20 [.008]	05182	4-192046-1	OBSOLETE
A	.68	.016	--	13	12.7 [.500]	UNPL	57	0.12 [.005]	05176	4-192046-0	OBSOLETE
A	.68	.018	--	12	12.7 [.500]	1-2	57	0.12 [.005]	05143	3-192046-9	OBSOLETE
									05184	3-192046-8	OBSOLETE
A	.68	.018	--	12	12.7 [.499]	4-2	56	0.15 [.006]	05144	3-192046-7	OBSOLETE
A	.64	.022	--	14	12.4 [.490]	1-2	56	0.12 [.005]	05135	3-192046-6	OBSOLETE
A	.64	.022	--	14	12.4 [.490]	UNPL	56	0.12 [.005]	05138	3-192046-5	OBSOLETE
--	.64	.022	--	14	12.4 [.490]	1-2	56	0.10 [.004]	05148	3-192046-4	OBSOLETE
A	.64	.022	--	14	12.4 [.490]	UNPL	56	0.10 [.004]	05151	3-192046-3	OBSOLETE
--	.55	.018	--	12	12.3 [.486]	UNPL	56	0.12 [.005]	05099	3-192046-2	OBSOLETE
A	.50	.022	--	13	11.6 [.458]	UNPL	51	0.12 [.005]	05145	3-192046-1	OBSOLETE
A	.44	.022	--	12	10.2 [.400]	3-2	44	0.12 [.005]	05029	3-192046-0	OBSOLETE
A	.44	.022	--	12	10.2 [.400]	UNPL	44	0.12 [.005]	05066	2-192046-9	OBSOLETE
A	.42	.018	--	12	9.5 [.375]	3-2	42	0.15 [.006]	05019	2-192046-8	OBSOLETE
A	--	--	--	12	9.5 [.375]	UNPL	42	0.15 [.006]	05032	2-192046-7	OBSOLETE
A	.42	--	--	13	9.5 [.375]	1-2	42	0.12 [.005]	05137	2-192046-6	OBSOLETE
A	.38	--	--	12	7.9 [.312]	6	36	0.15 [.006]	05133	2-192046-5	OBSOLETE
A	.38	--	--	12	7.9 [.312]	3-2	36	0.15 [.006]	05120	2-192046-4	OBSOLETE
A	.34	--	--	12	7.5 [.297]	3-2	34	0.15 [.006]	05122	2-192046-3	OBSOLETE
									--	2-192046-2	OBSOLETE
A	.32	.018	--	12	6.9 [.270]	1-2	31	0.12 [.005]	05077	2-192046-1	OBSOLETE
A	.33	.018	--	12	6.3 [.250]	6	28	0.15 [.006]	05040	2-192046-0	
A	.33	.018	--	12	6.3 [.250]	3-2	28	0.15 [.006]	05064	1-192046-9	
SUPERSEDED BY 9-192046-4											
A	.33	.018	--	12	6.3 [.250]	UNPL	28	0.15 [.006]	05038	1-192046-7	OBSOLETE
A	.27	.018	--	12	5.7 [.225]	4-2	25	0.15 [.006]	05051	1-192046-6	
A	.27	.018	--	12	5.7 [.225]	1-2	25	0.15 [.006]	05163	1-192046-5	OBSOLETE
A	.27	.018	--	12	5.7 [.225]	UNPL	25	0.15 [.006]	05046	1-192046-4	OBSOLETE
A	.34	.022	--	14	5.1 [.200]	3-2	24	0.12 [.005]	05157	1-192046-3	OBSOLETE
A	.34	.022	--	14	5.1 [.200]	UNPL	24	0.12 [.005]	05156	1-192046-2	OBSOLETE
A	.24	.018	--	12	5 [.197]	1-2	22	0.15 [.006]	05147	1-192046-1	OBSOLETE
A	.24	.018	--	12	5 [.197]	UNPL	22	0.15 [.006]	05146	1-192046-0	OBSOLETE
A	.23	.018	--	12	4.7 [.187]	3-2	21	0.15 [.006]	05050	192046-9	OBSOLETE
A	.23	.018	--	12	4.7 [.187]	1-2	21	0.15 [.006]	05103	192046-8	OBSOLETE
A	.23	.022	--	12	4.7 [.187]	3-2	21	0.12 [.005]	05016	192046-7	OBSOLETE
A	.22	.018	--	12	4.4 [.172]	3-2	20	0.15 [.006]	05015	192046-6	
A	.22	.018	--	12	4.4 [.172]	1-2	20	0.15 [.006]	05162	192046-5	OBSOLETE
A	.22	.018	--	12	4.4 [.172]	UNPL	20	0.15 [.006]	05155	192046-4	OBSOLETE
A	.19	.018	--	12	4.1 [.160]	5-2	18	0.10 [.004]	05114	192046-3	OBSOLETE
A	.19	.018	--	12	4.1 [.160]	UNPL	18	0.10 [.004]	05113	192046-2	OBSOLETE
A	.19	.018	--	12	4 [.157]	4-2	18	0.15 [.006]	05134	192046-1	OBSOLETE

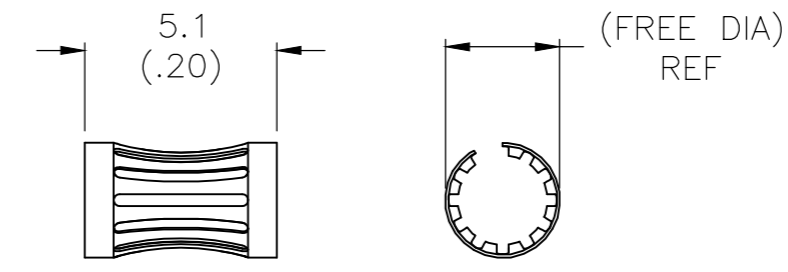
- 1 FINISH: SILVER PLATE 200uIN THICK MIN.
- 2 FINISH: NICKEL PLATE 40uIN THICK MIN.
- 3 FINISH: GOLD PLATE 10uIN THICK MIN.
- 4 FINISH: GOLD PLATE 50uIN THICK MIN.
- 5 FINISH: GOLD PLATE 20uIN THICK MIN.
- 6 FINISH: TIN PLATE 300uIN THICK MIN.
- 7 -
- 8 FINISH: GOLD PLATE 30uIN THICK MIN.
- 9 -
- 10 -
- 11 PLATING NOTES ARE TO BE INTERPRETED AS FOLLOWS 6-8 AS 6 OVER 8.
- 12 MATERIAL: CDA17200, BeCu.
- 13 MATERIAL: STAINLESS STEEL
- 14 MATERIAL: CDA17410, BeCu.
- 15 FINISH: HARD GOLD OVER NICKEL PLATE.
- 16 OBSOLETE PARTS: OBSOLETE CIS STREAMLINING PER D.RENAUD/D.SINISI

THIS DRAWING IS A CONTROLLED DOCUMENT.		DWN	-	
DIMENSIONS: mm		CHK	J.TURNER 08-04-93	
TOLERANCES UNLESS OTHERWISE SPECIFIED:		APVD	-	
0 PLC ± -		NAME		
1 PLC ± -		-		
2 PLC ± 0.5 [.02]		PRODUCT SPEC		
3 PLC ± 0.25 [.010]		-		
4 PLC ± -		APPLICATION SPEC		
ANGLES ± -		-		
MATERIAL	FINISH	WEIGHT	SIZE	CAGE CODE
-	-	-	A2	00779
CUSTOMER DRAWING		DRAWING NO	RESTRICTED TO	
SCALE 1:1		C=192046		-
SHEET 1 OF 2		REV W1		

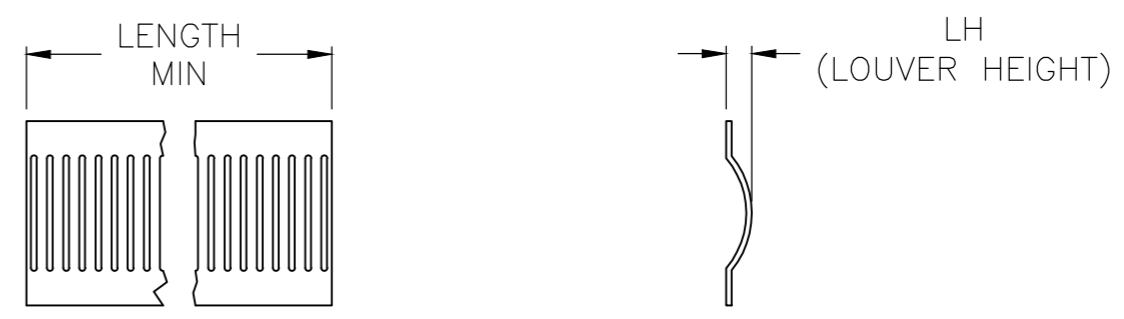
THIS DRAWING IS UNPUBLISHED. RELEASED FOR PUBLICATION
 © COPYRIGHT - By - ALL RIGHTS RESERVED.

REVISIONS				
P	LTR	DESCRIPTION	DATE	APVD
-	-	SEE SHEET 1	-	-

STYLE	(FREE DIA)	LH	LENGTH	MAT'L (NOTE)	MATING PIN ϕ REF	PLATING NOTE NO.	NUM LOUV	MAT'L THK	REF	PART NO.	
A	[.34]	[.022]	--	12	5.1 [.200]	3-2	24	0.12 [.005]	--	9-192046-9	OBSOLETE
A	[.19]	[.022]	--	12	3.4 [.134]	UNPL	15	0.15 [.006]	--	9-192046-8	OBSOLETE
A	[.19]	[.022]	--	12	3.4 [.134]	8-2	16	0.15 [.006]	--	9-192046-7	OBSOLETE
A	[.19]	[.022]	--	12	3.4 [.134]	8-2	16	0.15 [.006]	--	9-192046-6	OBSOLETE
A	[.19]	[.022]	--	12	3.4 [.134]	UNPL	15	0.15 [.006]	--	9-192046-5	OBSOLETE
A	[.35]	[.018]	--	12	6 [.236]	1-2	27	0.15 [.006]	--	9-192046-4	OBSOLETE
A	[.45]	[.018]	--	12	9 [.354]	1-2	40	0.15 [.006]	--	9-192046-3	OBSOLETE
A	[.19]	[.018]	--	12	3.17 [.125]	1-2	15	0.15 [.006]	--	9-192046-2	OBSOLETE
A	[.12]	[.018]	--	12	1.9 [.075]	15	10	0.08 [.003]	--	9-192046-1	OBSOLETE
A	[.12]	[.018]	--	12	1.9 [.075]	UNPL	10	0.08 [.003]	--	9-192046-0	OBSOLETE
A	[.32]	[.022]	--	12	5.7 [.225]	UNPL	25	0.15 [.006]	--	8-192046-9	OBSOLETE
A	[.21]	[.022]	--	12	5.4 [.211]	UNPL	19	0.12 [.005]	--	8-192046-8	OBSOLETE
A	[1.66]	[.022]	--	12	38.1 [1.500]	UNPL	168	0.15 [.006]	--	8-192046-7	OBSOLETE
A	[1.10]	[.018]	--	12	23.7 [.934]	UNPL	105	0.12 [.005]	--	8-192046-6	OBSOLETE
A	[.73]	[.016]	--	13	15.9 [.625]	UNPL	71	0.12 [.005]	--	8-192046-5	OBSOLETE
A	[.73]	[.018]	--	12	15.9 [.625]	UNPL	71	0.12 [.005]	--	8-192046-4	OBSOLETE
A	[.73]	[.018]	--	12	14.8 [.584]	UNPL	65	0.15 [.006]	--	8-192046-3	OBSOLETE
A	[.68]	[.018]	--	12	12.7 [.500]	UNPL	57	0.12 [.005]	--	8-192046-2	OBSOLETE
A	[.68]	[.018]	--	12	12.7 [.500]	UNPL	56	0.15 [.006]	--	8-192046-1	OBSOLETE
--	--	--	--	--	--	--	--	--	--	8-192046-0	OBSOLETE
A	[.32]	[.018]	--	12	6.9 [.270]	UNPL	31	0.12 [.005]	--	7-192046-9	OBSOLETE
A	[.23]	[.018]	--	12	4.7 [.187]	UNPL	21	0.15 [.006]	--	7-192046-8	OBSOLETE
A	[.19]	[.018]	--	12	4.5 [.157]	UNPL	18	0.15 [.006]	05189	7-192046-7	OBSOLETE
--	--	--	--	--	--	--	--	--	--	7-192046-6	OBSOLETE
A	[.45]	[.018]	--	12	9 [.354]	1-2	40	0.20 [.008]	--	7-192046-5	OBSOLETE
A	[.45]	[.018]	--	12	9 [.354]	UNPL	40	0.20 [.008]	--	7-192046-4	OBSOLETE
A	[.16]	[.018]	--	12	3 [.118]	1-2	14	0.20 [.008]	--	7-192046-3	OBSOLETE
A	[.16]	[.018]	--	12	3 [.118]	UNPL	14	0.20 [.008]	--	7-192046-2	OBSOLETE
SUPERSEDED BY 9-192046-3											
A	[.45]	[.018]	--	12	9 [.354]	UNPL	40	0.15 [.006]	--	7-192046-0	OBSOLETE
A	[.16]	[.018]	--	12	3 [.118]	1-2	14	0.15 [.006]	--	6-192046-9	OBSOLETE
A	[.16]	[.018]	--	12	3 [.118]	UNPL	14	0.15 [.006]	--	6-192046-8	OBSOLETE
A	[.45]	[.018]	--	12	9 [.354]	1-2	40	0.12 [.005]	--	6-192046-7	OBSOLETE
A	[.45]	[.018]	--	12	9 [.354]	UNPL	40	0.12 [.005]	--	6-192046-6	OBSOLETE
A	[.16]	[.018]	--	12	3 [.118]	1-2	14	0.12 [.005]	--	6-192046-5	OBSOLETE
A	[.16]	[.018]	--	12	3 [.118]	UNPL	14	0.12 [.005]	--	6-192046-4	OBSOLETE
A	[.32]	[.022]	--	12	5.7 [.225]	4-2	25	0.15 [.006]	--	6-192046-3	OBSOLETE
A	[.21]	[.022]	--	12	5.4 [.211]	1-2	19	0.12 [.005]	--	6-192046-2	OBSOLETE
SUPERSEDED BY 6-192044-0											
A	[.18]	[.022]	--	12	3.4 [.134]	UNPL	16	0.20 [.008]	--	6-192046-0	OBSOLETE
A	[.19]	[.022]	--	12	3.4 [.134]	4-2	16	0.15 [.006]	--	5-192046-9	OBSOLETE
A	[.19]	[.022]	--	12	3.4 [.134]	UNPL	16	0.15 [.006]	--	5-192046-8	OBSOLETE
A	--	[.022]	--	12	110.2 [4.340]	1-2	--	0.12 [.005]	05088	5-192046-7	OBSOLETE
A	--	[.022]	--	12	91.4 [3.600]	3-2	--	0.15 [.006]	05067	5-192046-6	OBSOLETE
A	[1.66]	[.022]	--	12	38.1 [1.500]	3-2	168	0.15 [.006]	05045	5-192046-5	OBSOLETE
A	[1.10]	[.018]	--	12	23.7 [.934]	1-2	105	0.12 [.005]	05078	5-192046-4	OBSOLETE
A	[1.10]	[.022]	--	12	22.7 [.895]	UNPL	102	0.12 [.005]	05082	5-192046-3	OBSOLETE
A	[1.20]	[.022]	--	12	20 [.788]	UNPL	89	0.12 [.005]	05129	5-192046-2	OBSOLETE
									05081	5-192046-1	OBSOLETE



STYLE A (FEMALE)



STYLE C (STRIP)

THIS DRAWING IS A CONTROLLED DOCUMENT.

DIMENSIONS: mm	TOLERANCES UNLESS OTHERWISE SPECIFIED: 0 PLC ± - 1 PLC ± - 2 PLC ± 0.5 [.02] 3 PLC ± 0.25 [.010] 4 PLC ± - ANGLES ± -	DWN - CHK J.TURNER 08-04-93 APVD - PRODUCT SPEC - APPLICATION SPEC - WEIGHT -			RESTRICTED TO
MATERIAL -	FINISH -	NAME	SIZE A2	CAGE CODE 00779	DRAWING NO C=192046
CUSTOMER DRAWING			SCALE 1:1	SHEET 2 of 2	REV W1

单击下面可查看定价，库存，交付和生命周期等信息

[>>TE Connectivity\(泰科\)](#)