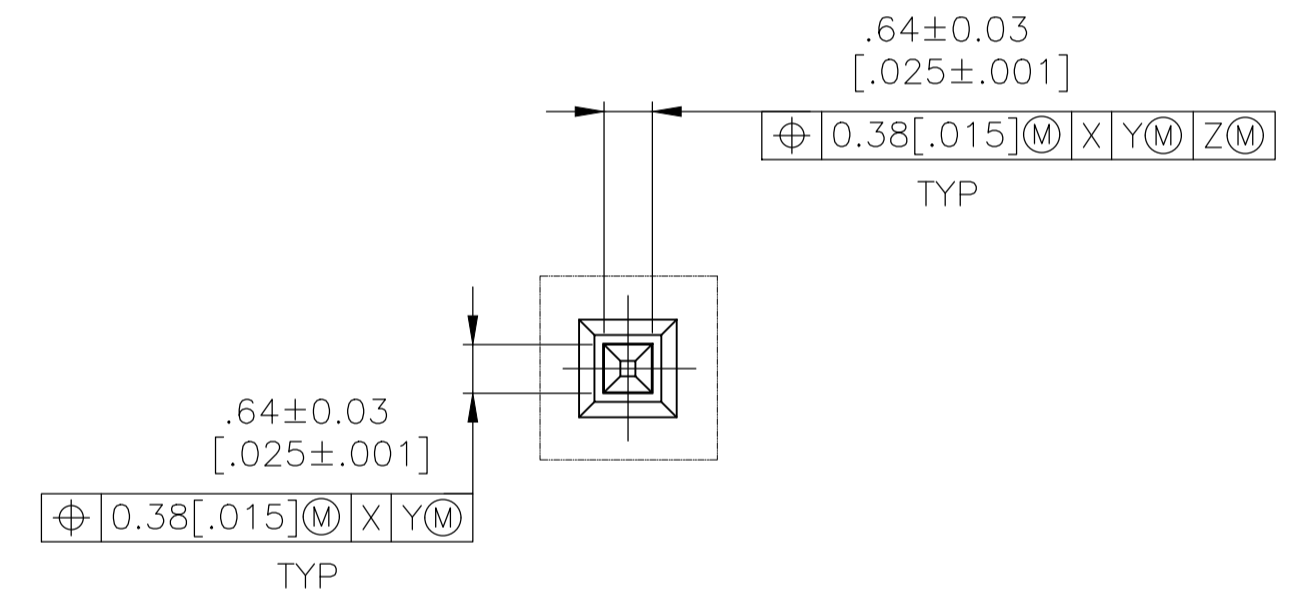
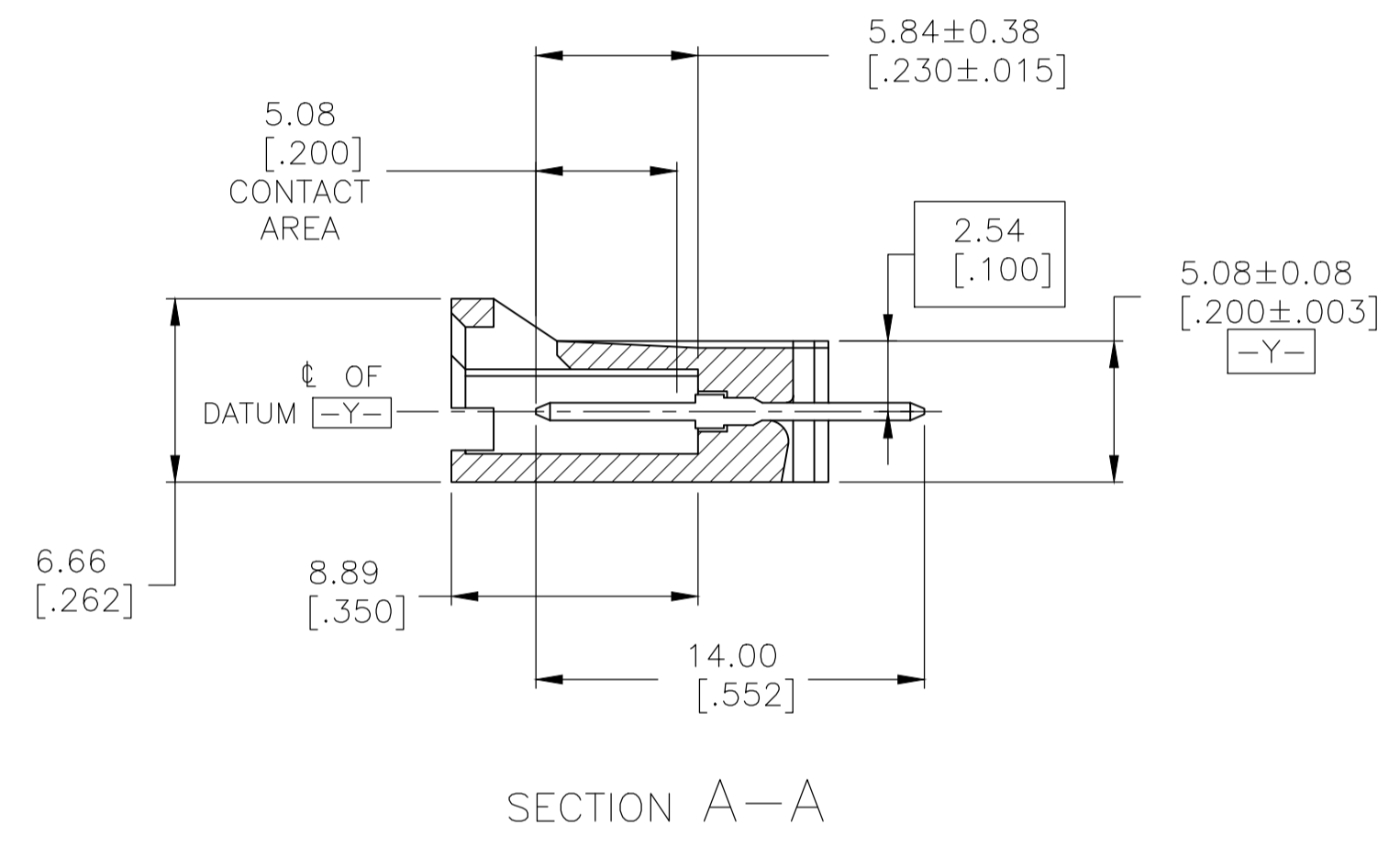
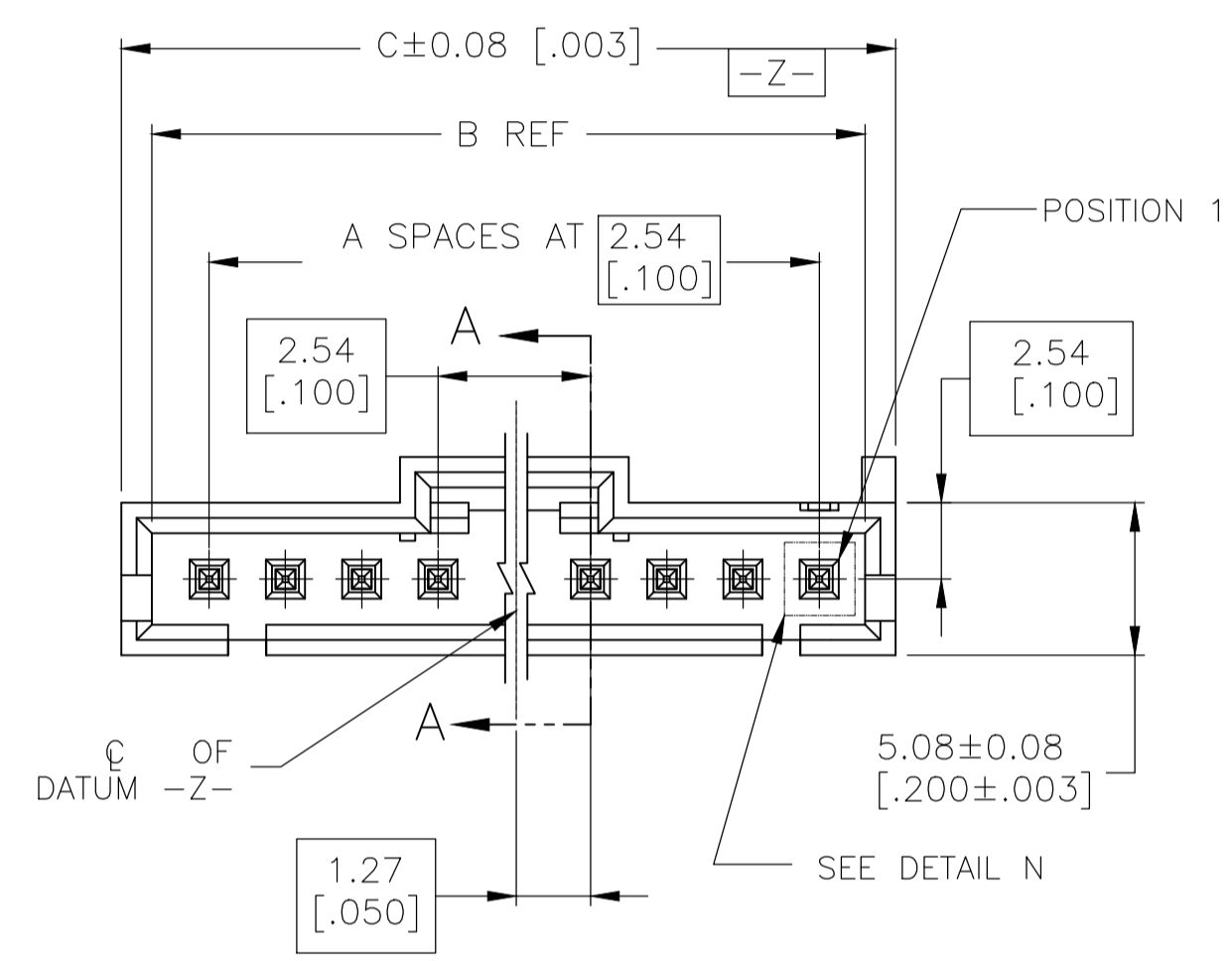
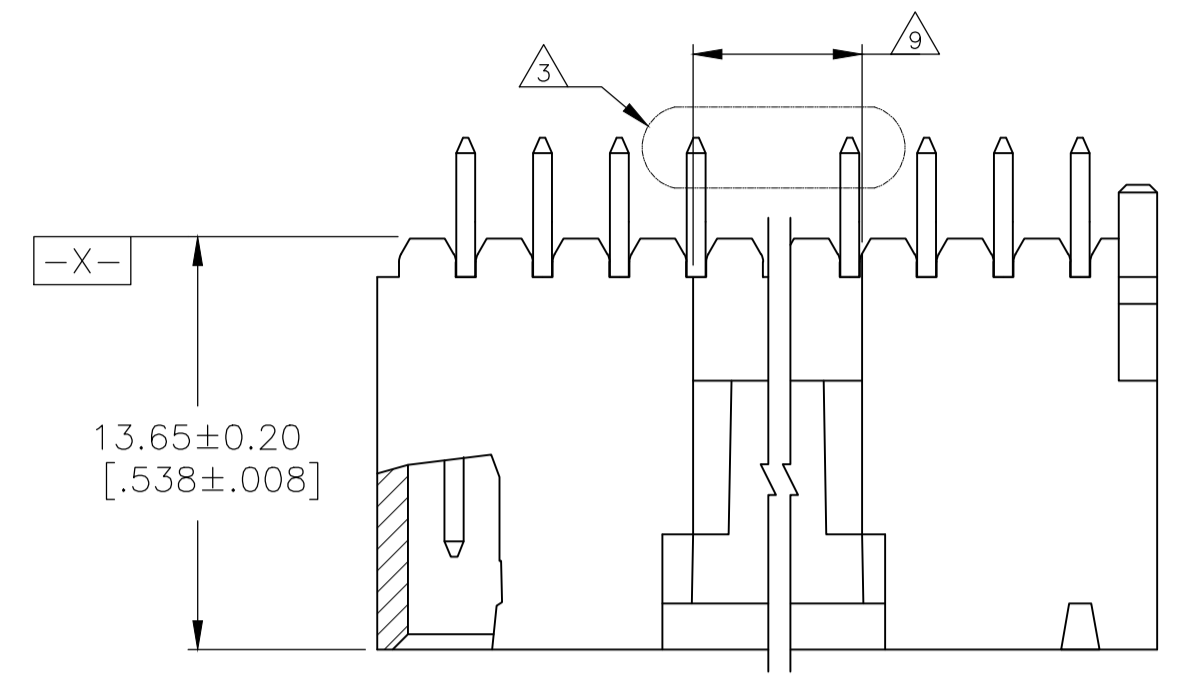
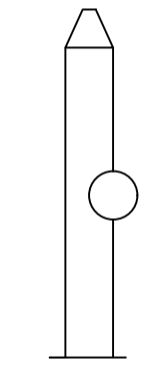


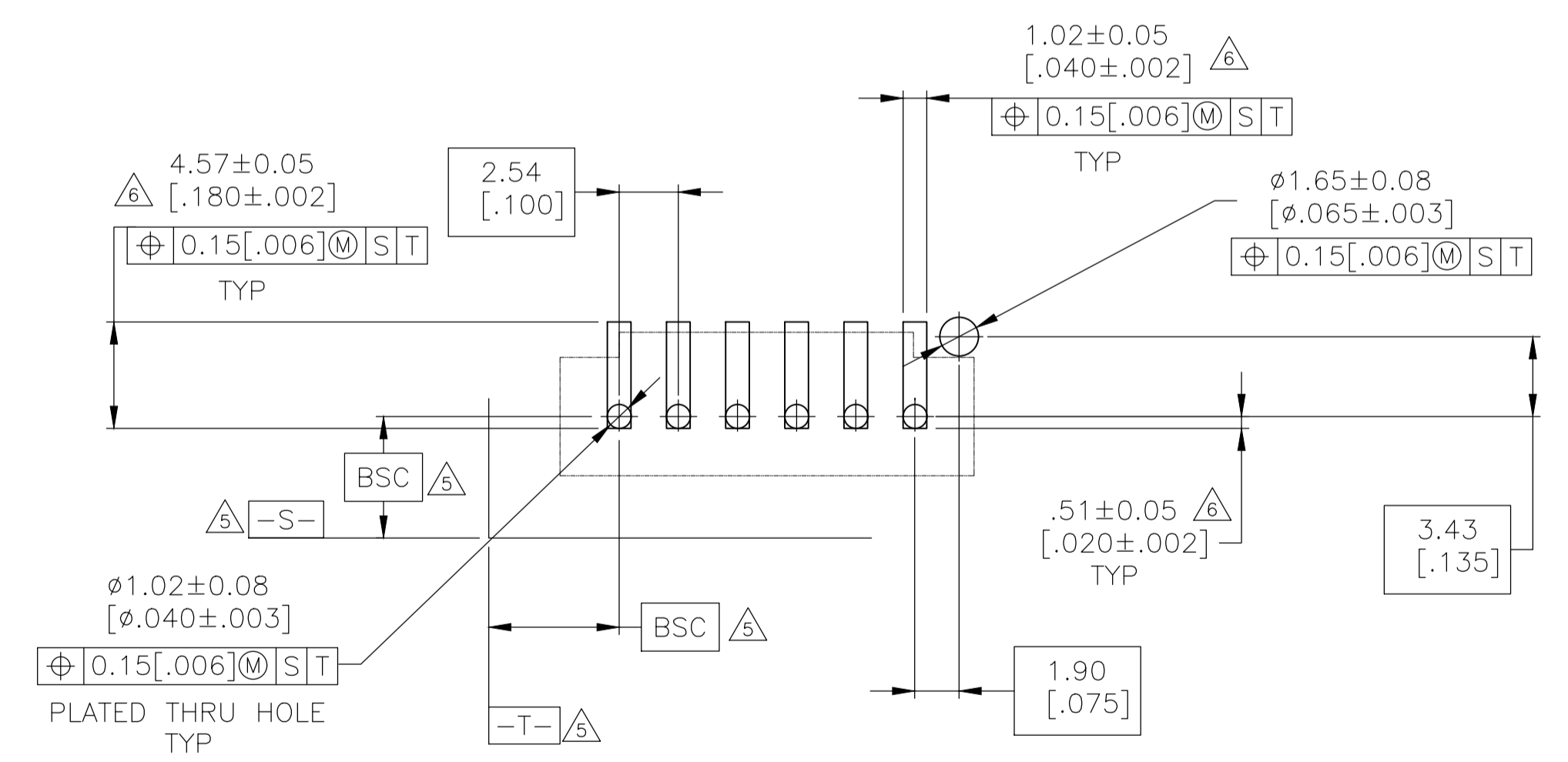
REVISIONS				
P	LTR	DESCRIPTION	DATE	BY
F	REVISED PER	ECO-20-001327	04JUN2020	SB JO



DETAIL N  
SCALE 10:1



DETAIL Z  
POST DETAIL TYP  
2 POST MINIMUM  
SCALE 10:1



RECOMMENDED PC BOARD MOUNTING DIMENSIONS  
RECOMMENDED STENCIL THICKNESS = 0.25 [.010]

- 1 HOUSING: LCP, COLOR-BLACK.  
POST: BRASS
- 2 FINISH: 0.00076 [.000030] MIN GOLD ON THE CONTACT AREA, 0.00254 [.000100] MIN MATTE TIN-LEAD ON REMAINDER OF CONTACT, ALL OVER 0.00127 [.000050] NICKEL.
- 3 SELECT POST TAILS FORMED TO PROVIDE CONNECTOR HOLD DOWN UNTIL SOLDERED, CONFIGURATION ACCEPTS 0.69-2.03 [.027-.080] THICK PRINTED CIRCUIT BOARD.(SEE DETAIL Z)
- 4 PARTS ARE PACKAGED IN GANG TUBES.
- 5 DATUMS AND BASIC DIMENSIONS ESTABLISHED BY CUSTOMER.
- 6 DIMENSIONS NOTED ARE FOR SOLDER STENCIL LAYOUT FOR USE WITH 1.58 ± 0.20 [.062 ± .008] THICK PRINTED CIRCUIT BOARDS.
- 7 PRELIMINARY PART-NOT RELEASED FOR PRODUCTION.
- 8 FINISH: 0.00076 [.000030] MIN GOLD ON THE CONTACT AREA, 0.00254 [.000100] MIN MATTE TIN ON REMAINDER OF CONTACT, ALL OVER 0.00127 [.000050] NICKEL.
- 9 0.25 [.010] RECESS PERMISSIBLE IN THIS AREA FOR MOLD SHUT OFF

8	27.81 [1.095]	25.91 [1.020]	9	10	5-147245-9
8	22.73 [.895]	20.83 [.820]	7	8	5-147245-7
8	7.49 [.295]	5.59 [.220]	1	2	5-147245-1
7	27.81 [1.095]	25.91 [1.020]	9	10	147245-9
7	22.73 [.895]	20.83 [.820]	7	8	147245-7
2	7.49 [.295]	5.59 [.220]	1	2	147245-1
PLATING	C	B	A	NO. OF POSN	PART NO.

THIS DRAWING IS A CONTROLLED DOCUMENT.

DIMENSIONS: mm [INCHES]	TOLERANCES UNLESS OTHERWISE SPECIFIED:	DIN B HAYMAKER 01APR99	TE Connectivity
0 PLC ± -	1 PLC ± -	CJK J.GESFORD 02APR99	NAME
2 PLC ± -	3 PLC ± 0.13 [.005]	APVD J.GESFORD 02APR99	PRODUCT SPEC
4 PLC ± -	ANGLES ± -	APPLICATION SPEC	SIZE
MATERIAL	FINISH	WEIGHT	CAGE CODE
SEE TABLE	SEE TABLE	A1 00779	DRAWING NO
		C=147245	RESTRICTED TO
		CUSTOMER DRAWING	SCALE 4:1 SHEET 1 OF 1 REV F

单击下面可查看定价，库存，交付和生命周期等信息

[>>TE Connectivity\(泰科\)](#)