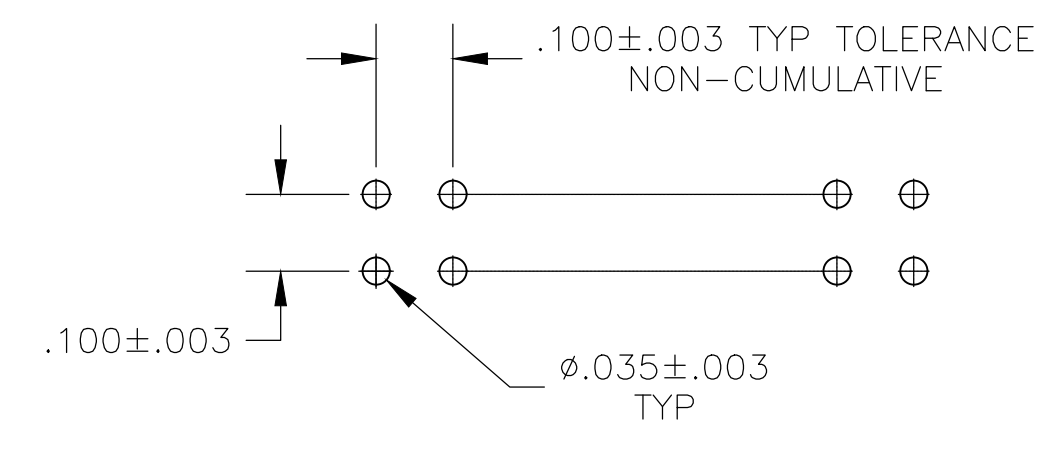
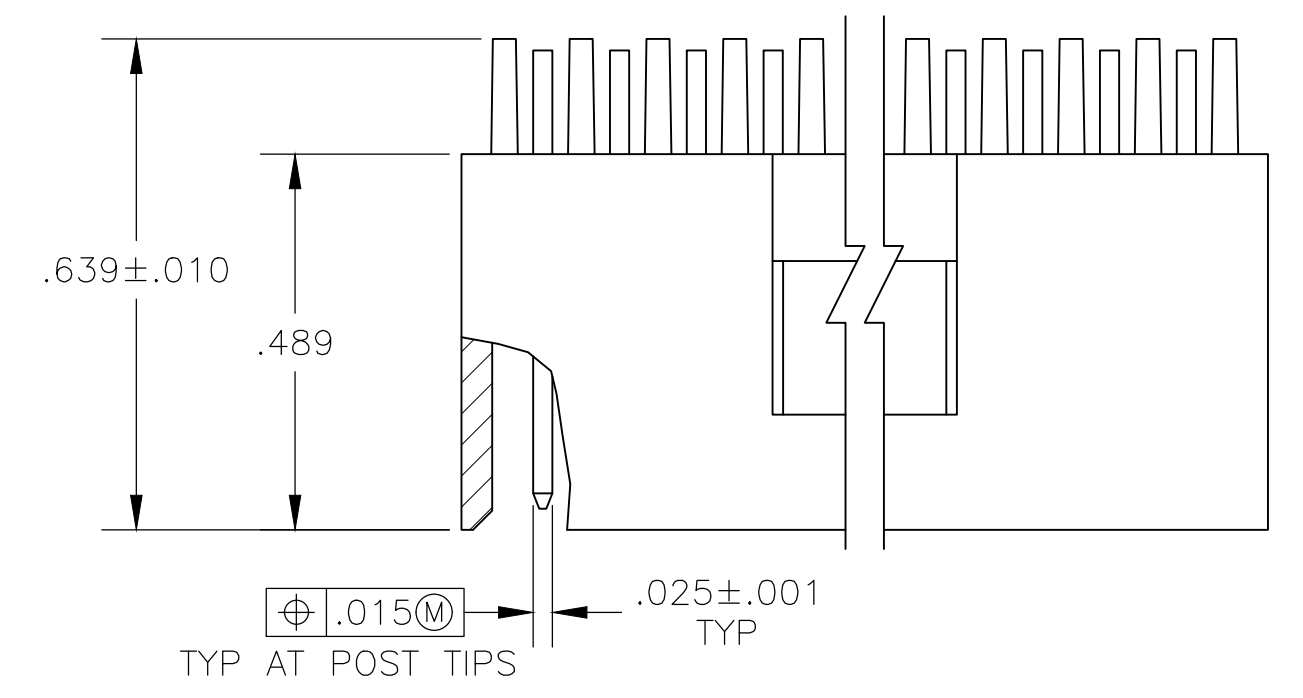
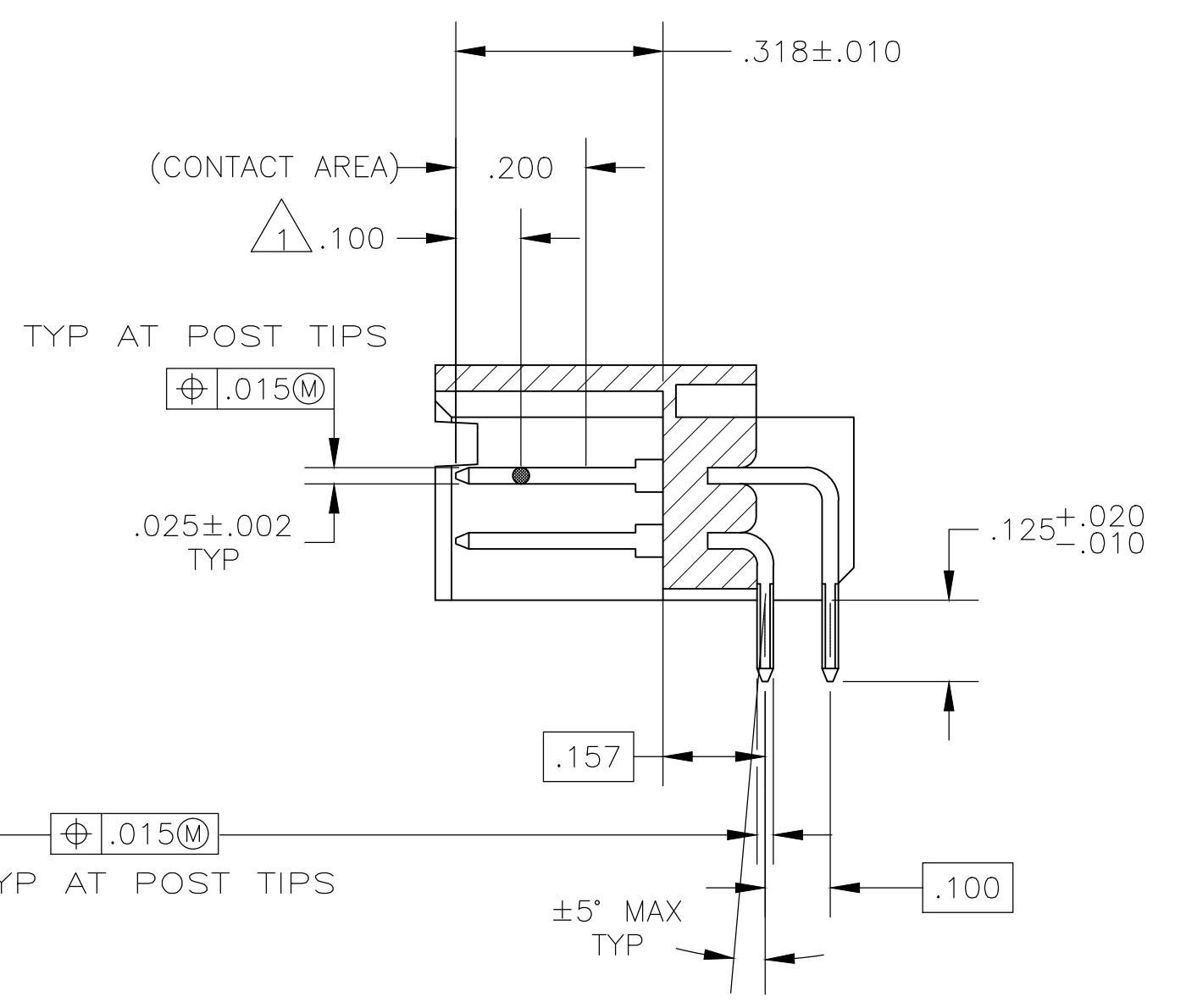
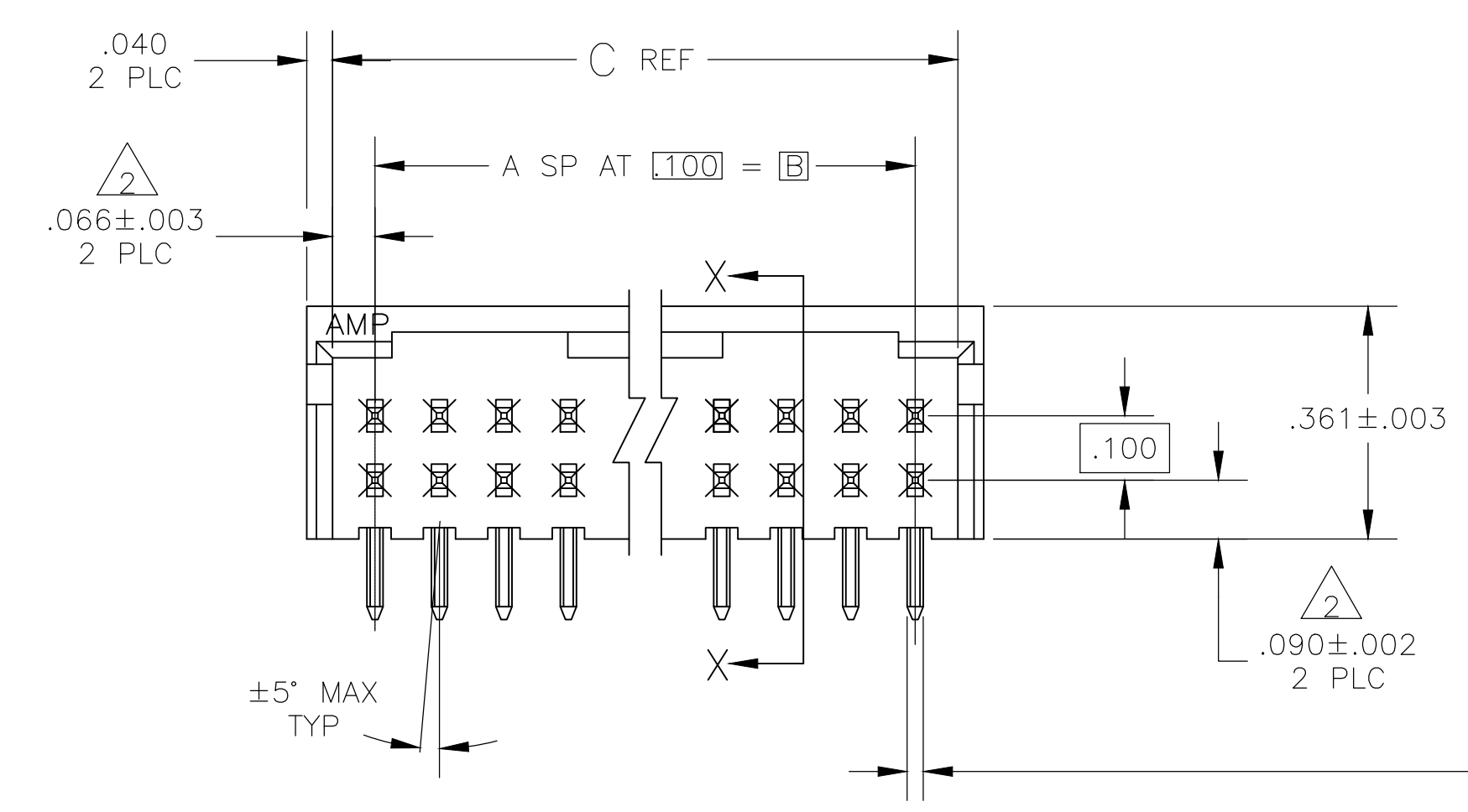


REVISIONS					
P	LTR	DESCRIPTION	DATE	DWN	APVD
K2		PART STATUS UPDATED IN PART LIST TABLE	05FEB2018	SD	PS



RECOMMENDED HOLE LAYOUT



SECTION X-X

- 1 POINT OF MEASUREMENT FOR PLATING THICKNESS.
- 2 THE NOTED DIMENSION APPLIES AT THE INTERSECTION OF THE POST AND HOUSING
- 3 POSTS: .000015 GOLD IN CONTACT AREA, .000100-.000200 MATTE TIN-LEAD ON SOLDER TAIL, ALL OVER .000050 NICKEL.
- 4 POSTS: .000015 GOLD IN CONTACT AREA, .000100-.000200 MATTE TIN ON SOLDER TAIL, ALL OVER .000050 NICKEL.
- 5 OBSOLETE PARTS: OBSOLETE CIS STREAMLINING PER D.RENAUD/D.SINISI

PLATING	C	B	A	NO OF POSN	PART NUMBER	
△				29	60	7-102055-8
△				26	54	7-102055-5
△				24	50	7-102055-3
△				19	40	6-102055-8
△				16	34	6-102055-5
△				14	30	6-102055-3
△				11	24	6-102055-0
△				8	18	5-102055-8
△				7	16	5-102055-7
△				6	14	5-102055-6
△				5	12	5-102055-5
△				4	10	5-102055-4
△				3	8	5-102055-3
△				2	6	5-102055-2
△				9	20	5-102055-1
△				36	74	3-102055-5
△				35	72	3-102055-4
△				34	70	3-102055-3
△				33	68	3-102055-2
△				32	66	3-102055-1
△				31	64	3-102055-0
△				30	62	2-102055-9
△				29	60	2-102055-8
△				28	58	2-102055-7
△				27	56	2-102055-6
△				26	54	2-102055-5
△				25	52	2-102055-4
△				24	50	2-102055-3
△				23	48	2-102055-2
△				22	46	2-102055-1
△				21	44	2-102055-0
△				20	42	1-102055-9
△				19	40	1-102055-8
△				18	38	1-102055-7
△				17	36	1-102055-6
△				16	34	1-102055-5
△				15	32	1-102055-4
△				14	30	1-102055-3
△				13	28	1-102055-2
△				12	26	1-102055-1
△				11	24	1-102055-0
△				10	22	102055-9
△				8	18	102055-8
△				7	16	102055-7
△				6	14	102055-6
△				5	12	102055-5
△				4	10	102055-4
△				3	8	102055-3
△				2	6	102055-2
△				9	20	102055-1

SUPERCEDED BY 1-103164-1

THIS DRAWING IS A CONTROLLED DOCUMENT.

DIMENSIONS: INCHES	TOLERANCES UNLESS OTHERWISE SPECIFIED:	0 PLC ± -	1 PLC ± -	2 PLC ± -	3 PLC ± .005	4 PLC ± -	ANGLES ± -
--------------------	--	-----------	-----------	-----------	--------------	-----------	------------

MATERIAL: HOUSING: PLATE RESISTANT COLOR: BRASS POSTPHOS BRONZE FINISH: SEE TABLE

WEIGHT: -

CUSTOMER DRAWING

DIN H MOLL 16NOV87
CHK R FRIDT 16NOV87
APVD R FLICKER 16NOV87

NAME: HEADER ASSY, MOD II, DBL ROW, .100X.100 C/L, RIGHT ANGLE, (3) SIDED SHROUD

PRODUCT SPEC

APPLICATION SPEC

SIZE: A1 CAGE CODE: 00779 DRAWING NO: 102055

RESTRICTED TO: -

SCALE: 4:1 SHEET: 1 OF 1 REV: K2

单击下面可查看定价，库存，交付和生命周期等信息

[>>TE Connectivity\(泰科\)](#)