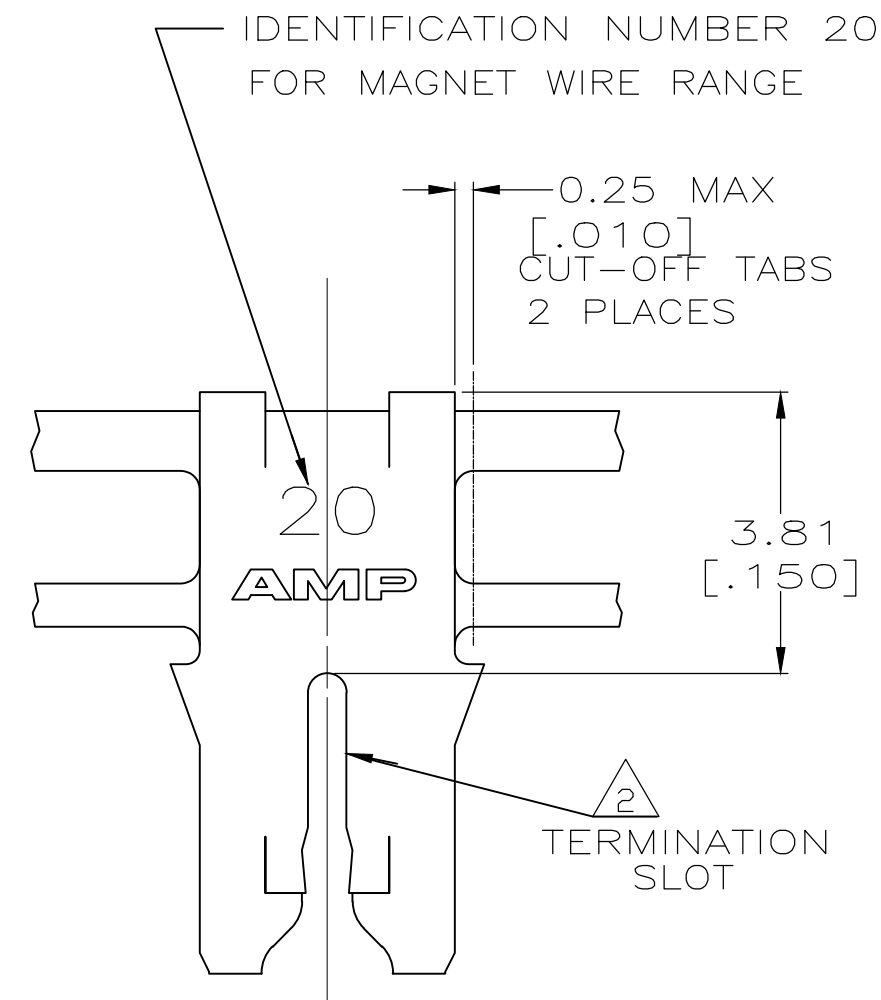
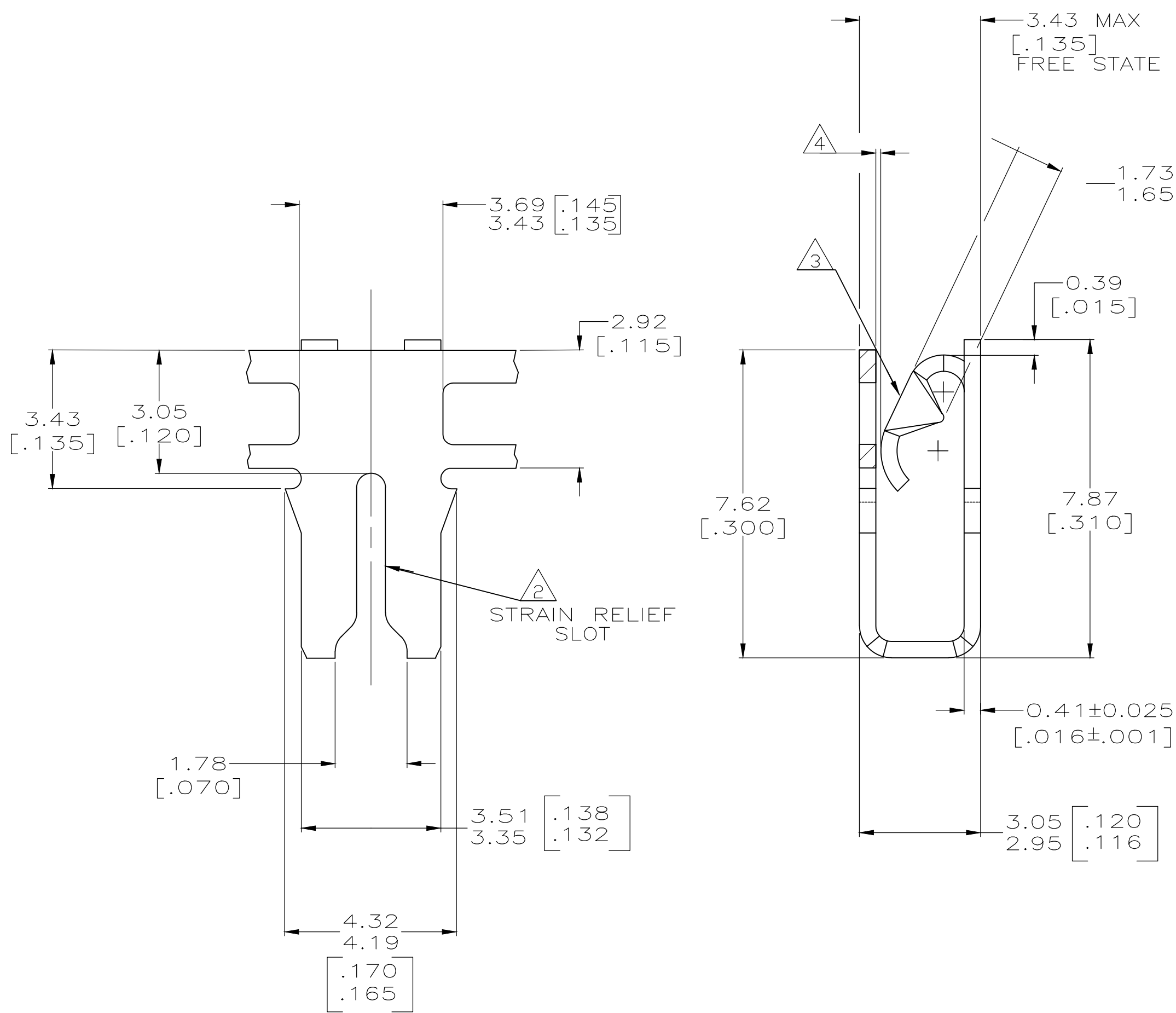
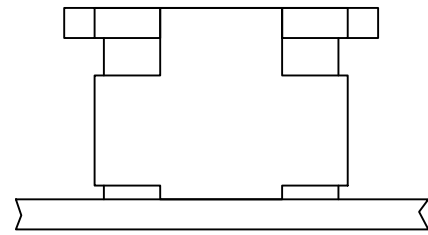


THIS DRAWING IS UNPUBLISHED. RELEASED FOR PUBLICATION  
 © COPYRIGHT - By - ALL RIGHTS RESERVED.

LOC	DIST	REVISIONS			
P	LTR	DESCRIPTION	DATE	DWN	APVD
AF	50	C	REVISED PER ECR-18-009392	28MAR2019	BDA SV

- 1 CONTINUOUS STRIP ON REELS WITH TERMINALS LOCATED ON 5.59±0.08 [.220±.003] CENTERS
- 2 SLOT ACCEPTS A 0.68-0.81mm [#21.5-#20] AWG COPPER MAGNET WIRE.
- 3 MATES WITH STANDARD MAG-MATE STYLED POKE-IN TAB TERMINAL.
- 4 WHEN FREE STATE IS COMPRESSED TO 3.23 [.127] DIMENSION GAP BETWEEN SPRING AND CARRIER IS TO BE 0.30 [.012] MAX.
- 5 0.0010 [.000040] MIN TIN
- 6 ANTI-FRETTING LUBRICANT APPLIED.
- 7 0.00382 [.000150] MIN SILVER PLATE OVER 0.00127 [.000050] MIN NICKEL UNDERPLATE.
- 8 PRELIMINARY - NOT FOR PRODUCTION.



FINISH	MATERIAL	PART NUMBER
7	4M BRASS	8 1217688-4
5 6	H04 PHOSPHOR BRONZE	8 1217688-3
5 6	4M BRASS	8 1217688-2
5	4M BRASS	1217688-1

THIS DRAWING IS A CONTROLLED DOCUMENT.		DWN 12OCT2001 MICHAEL S. FEHER	<b>STE</b> TE Connectivity	
DIMENSIONS: INCHES		CHK 17OCT2001 KURT A. RANDOLPH		
TOLERANCES UNLESS OTHERWISE SPECIFIED:		APVD 17OCT2001 KURT A. RANDOLPH	NAME	
0 PLC ± -		PRODUCT SPEC	SPECIAL LEAF CONTACT, 300 SERIES MAG-MATE™	
1 PLC ± -		APPLICATION SPEC	-	
2 PLC ± 0.25 [.010]		114-2046	SIZE	CAGE CODE
3 PLC ± -		WEIGHT	A2	00779
4 PLC ± -		CUSTOMER DRAWING	DRAWING NO	RESTRICTED TO
ANGLES ± -		SCALE	10:1	SHEET
FINISH SEE TABLE		SCALE	10:1	1 OF 1
MATERIAL SEE TABLE		REV	C	

单击下面可查看定价，库存，交付和生命周期等信息

[>>TE Connectivity\(泰科\)](#)