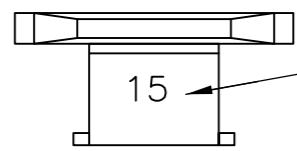


THIS DRAWING IS UNPUBLISHED. RELEASED FOR PUBLICATION
 © COPYRIGHT - By - ALL RIGHTS RESERVED.

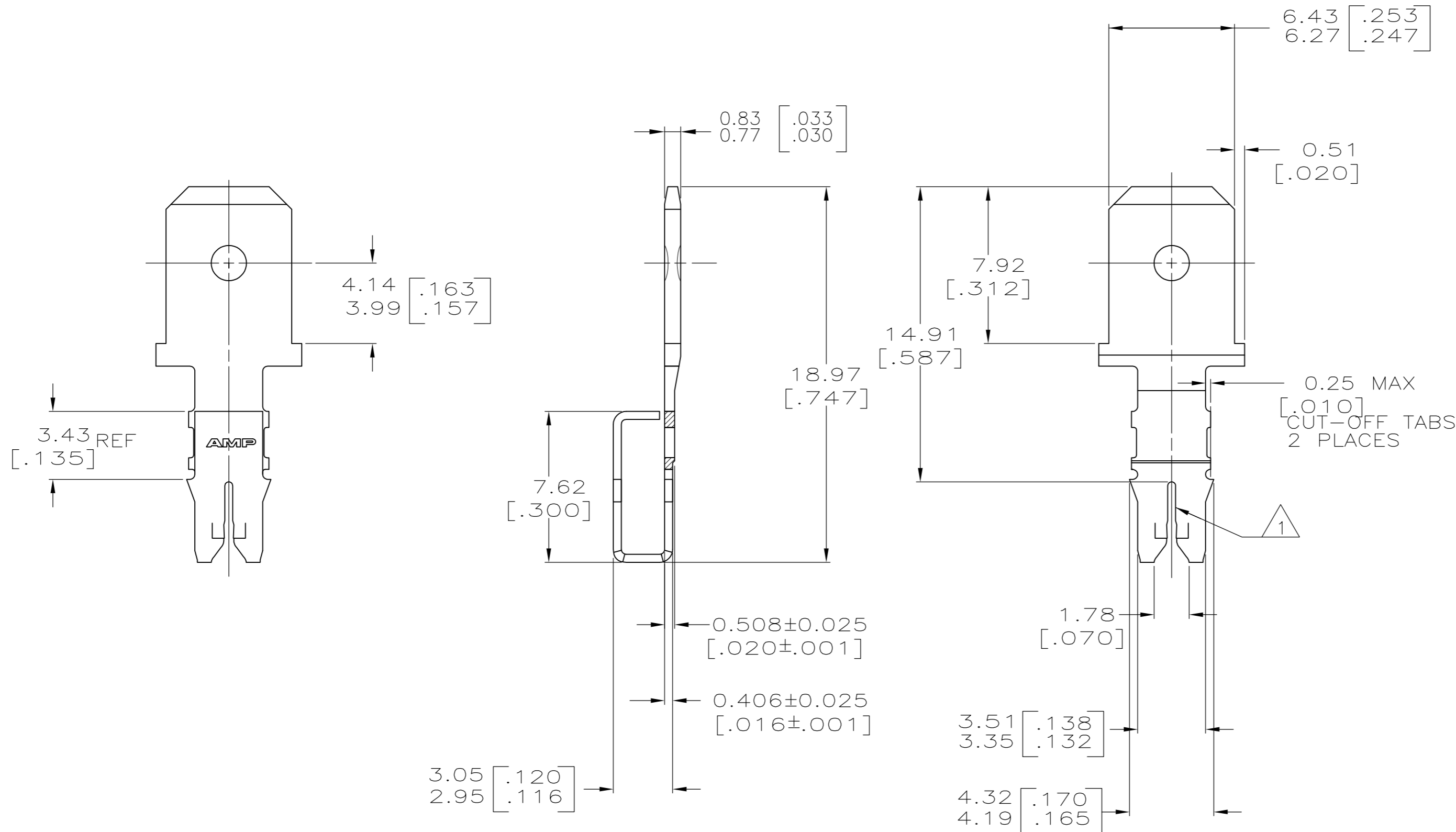
LOC	DIST	REVISIONS			
P	LTR	DESCRIPTION	DATE	DWN	APVD
AF	50	C2	ECR-15-005665	10AUG2015	BDA/PKS



IDENTIFICATION NUMBER 15 FOR
MAGNET WIRE RANGE

1 SLOT TERMINATES A SINGLE MAGNET WIRE, COPPER RANGE IS 0.64-0.81mm [#22-#20] AWG. ALUMINUM RANGE IS 0.72-0.91mm [#21-#19] AWG. ALUMINUM WIRE RANGE APPLIES FOR POST-TIN PLATED VERSIONS ONLY.

2 AFTER INSERTION INTO PLASTIC HOLDER TAB PORTION MUST BE BENT OVER 45° TO 90° OR POTTED-IN TO PREVENT PULL-OUT WHEN MATING RECEPTACLE IS DISCONNECTED.



1217031

1217031-1
PART NUMBER

THIS DRAWING IS A CONTROLLED DOCUMENT.		DWN	24NOV97		TE Connectivity		
DIMENSIONS: mm [INCHES]		CHK	24NOV97		NAME		
TOLERANCES UNLESS OTHERWISE SPECIFIED:		APVD	24NOV97		108-2012		
0 PLC ± - 1 PLC ± - 2 PLC ± 0.25[.010] 3 PLC ± - 4 PLC ± - ANGLES ± -		PRODUCT SPEC			114-2046		
MATERIAL	FINISH	WEIGHT		SIZE	CAGE CODE	DRAWING NO	RESTRICTED TO
BRASS	TIN PLATE	-		A2	00779	C=1217031	-
CUSTOMER DRAWING				SCALE	SHEET	REV	
				5:1	1 of 1	C2	

单击下面可查看定价，库存，交付和生命周期等信息

[>>TE Connectivity\(泰科\)](#)