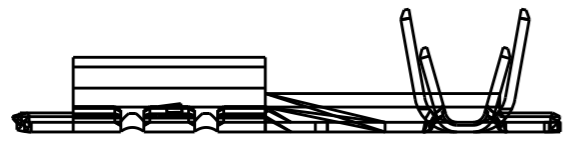
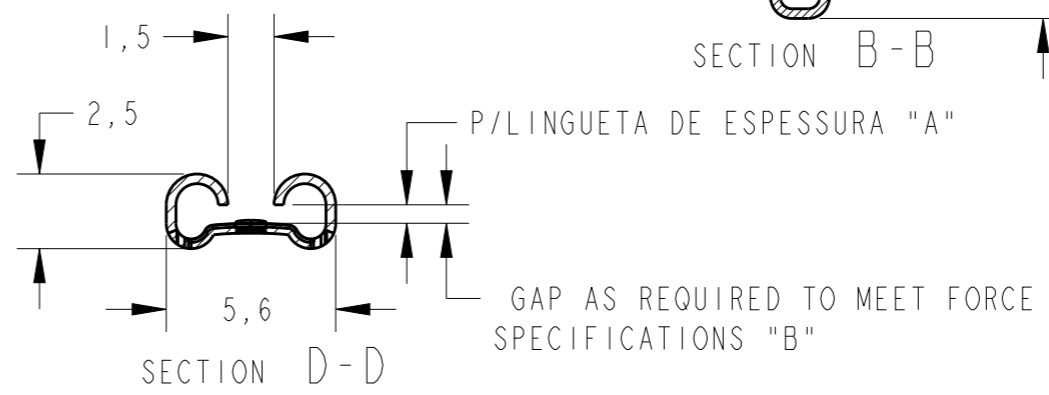
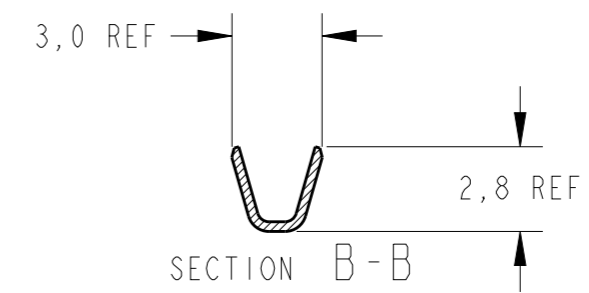
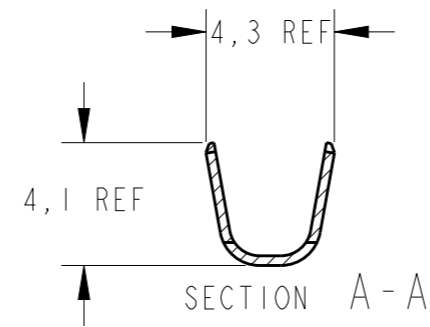
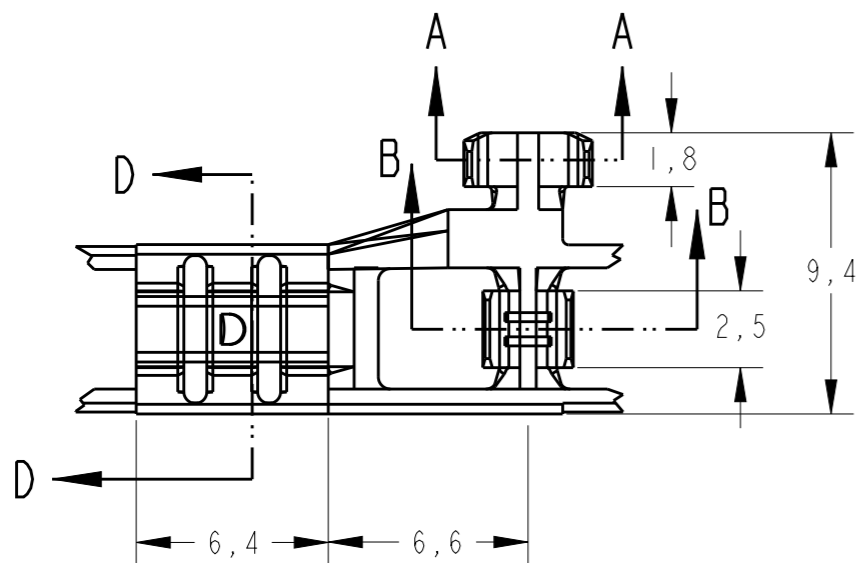


THIS DRAWING IS UNPUBLISHED. RELEASED FOR PUBLICATION 20  
 © COPYRIGHT 20 BY - ALL RIGHTS RESERVED.

LOC	DIST	REVISIONS					
		P	LTR	DESCRIPTION	DATE	DWN	APVD
AP	-		L	REV. BY ECO-08-013701	03JUNE08	HC	WLS
			L1	REV. BY ECO 15-002218	02FEB2015	HC	WLS
			L2	REVISED PER ECR-20-009164	14AUG2020	MK	DH



OBSOLETE	-	-	0,8	626413-7	ESTANHADO	BRONZE FOSE.	626412-7
OBSOLETE	-	-	0,5	626413-6	-	BRONZE FOSE	626412-6
OBSOLETE	-	-	0,8	626413-5	-	BRONZE FOSE	626412-5
-	0.028	0.84-0.76	0,8	626413-4	ESTANHADO	LATÃO	626412-4
-	0.028	0.84-0.76	0,8	626413-3	-	LATÃO	626412-3
-	0.018	0.53-0.48	0,5	626413-2	ESTANHADO	LATÃO	626412-2
-	0.018	0.53-0.48	0,5	626413-1	-	LATÃO	626412-1
	NOT TO EXCEED "B" MAX	MATING TAB THK.	ESPESSURA "A"	LOOSE PIECE PN	FINISH	MATERIAL	PART NUMBER

THIS DRAWING IS A CONTROLLED DOCUMENT.

DIMENSIONS:	TOLERANCES UNLESS OTHERWISE SPECIFIED:
mm	
	0 PLC ±0,4
	1 PLC ±0,4
	2 PLC ±0,4
	3 PLC ±0,4
	4 PLC ±0,4
	ANGLES ±1°
	FINISH -

WIRE RANGE  
20/16AWG  
INS. DIA RANGE  
2,3/3,3mm

MATERIAL SEE TABLE

DWN	H.C. CANTERI	12FEB2003
CHK	W.L. STEFANI	12FEB2003
APVD	H.C. CANTERI	12FEB2003
PRODUCT SPEC		
APPLICATION SPEC		
WEIGHT		
Customer Drawing		

**STE** TE Connectivity

NAME: .187 FLAG FASTON RECEP.

SIZE	CAGE CODE	DRAWING NO	RESTRICTED TO
A3	00779	626412	-

SCALE: 4:1 SHEET 1 OF 1 REV L2

单击下面可查看定价，库存，交付和生命周期等信息

[>>TE Connectivity\(泰科\)](#)