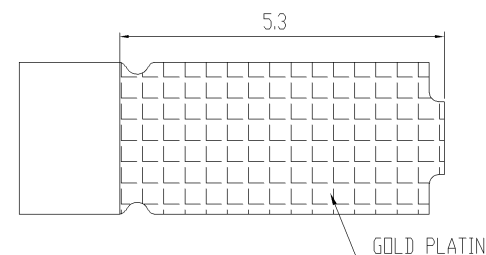
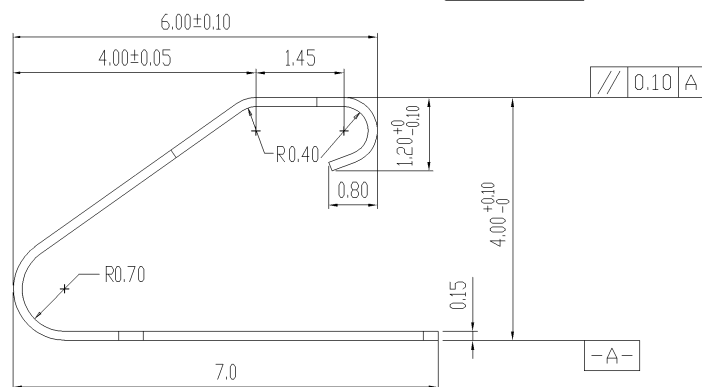
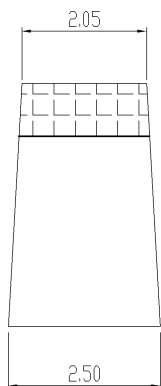
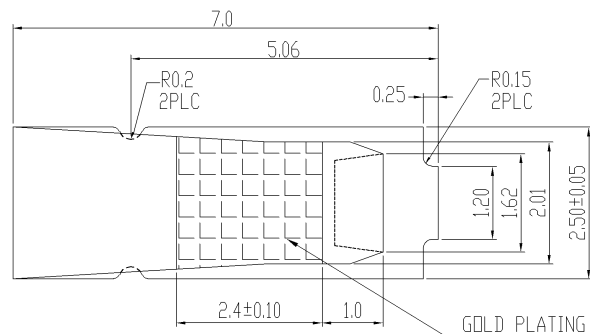


THIS DRAWING IS UNPUBLISHED. RELEASED FOR PUBLICATION  
 © COPYRIGHT 2011 BY TYCO ELECTRONICS CORPORATION. ALL RIGHTS RESERVED.

LOC	DIST	REVISIONS					
DW		P	LTR	DESCRIPTION	DATE	DWN	APVD
		B2		REVISED (ECR-11-006482)	29MAR11	JL	WK

- NOTES :
- ROHS 2002/95/EC COMPLIANT
  - 1. MATERIAL :  
COPPER ALLOY, 0.15±0.01MM THK
  - 2. FINISH :  
GOLD FLASH PLATING ON THE CONTACT AND FOOT AREA  
NICKEL UNDERPLATING OVER ALL.
  - 3. CURRENT RATING : 1 A
  - 4. TEMPERATURE RATING : -40°C ~ +105°C

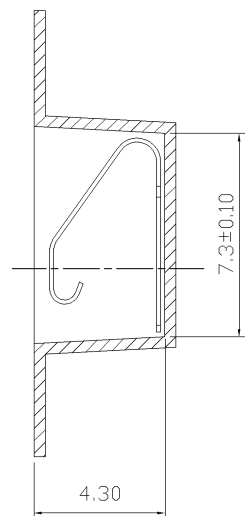
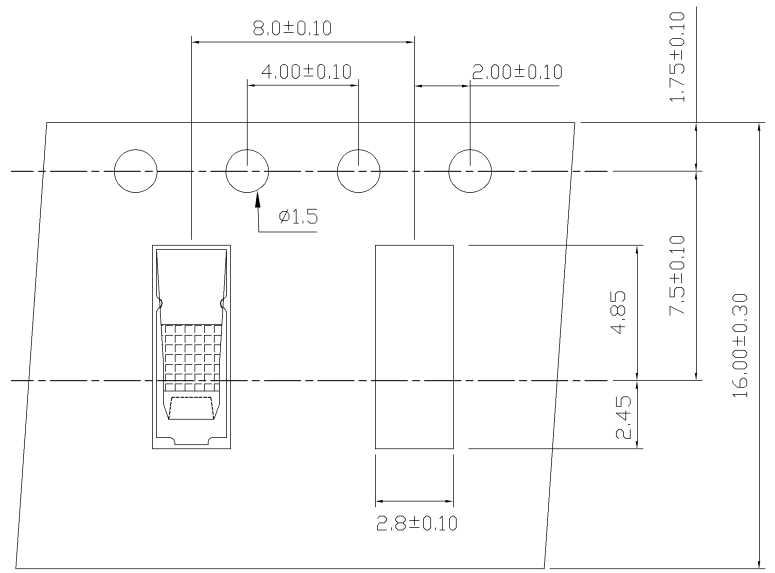


OBSOLETE	-440422-2	Ti-Cu
	440422-1	Be-Cu
	PART NUMBER	MATERIAL

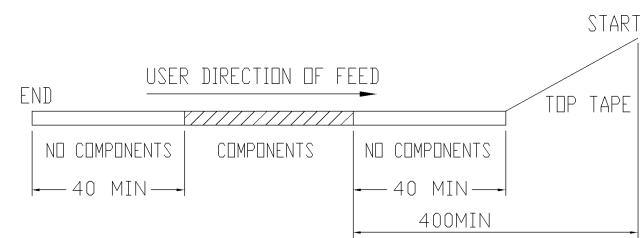
THIS DRAWING IS A CONTROLLED DOCUMENT.		DWN	S. HOU	01FEB2001	<b>TE Connectivity</b>								
DIMENSIONS: mm		CHK	J. CHENG	01FEB2001									
TOLERANCES UNLESS OTHERWISE SPECIFIED:		APVD	J. WU	01FEB2001									
0 PLC ± - 1 PLC ± 0.3 2 PLC ± 0.15 3 PLC ± 0.03 4 PLC ± - ANGLES ± 2°		PRODUCT SPEC	NAME										
MATERIAL SEE NOTE		APPLICATION SPEC	108-57068		SHIELD FINGER 4025-T								
FINISH SEE NOTE		WEIGHT	-		RESTRICTED TO								
		CUSTOMER DRAWING	SIZE	A3	CAGE CODE	00779	DRAWING NO	C=440422	SCALE	SHEET	1 of 2	REV	B2

THIS DRAWING IS UNPUBLISHED. RELEASED FOR PUBLICATION  
 © COPYRIGHT 2011 BY TYCO ELECTRONICS CORPORATION. ALL RIGHTS RESERVED.

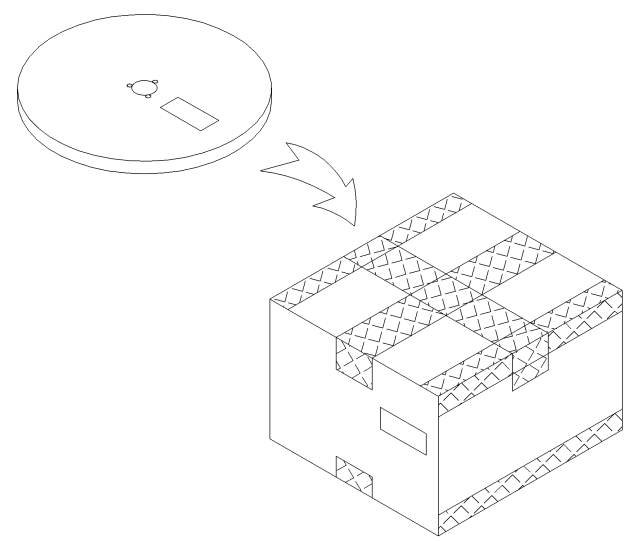
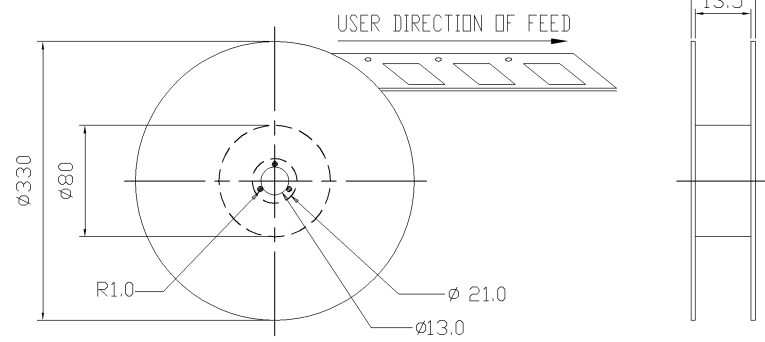
LOC DW	DIST	REVISIONS			
P	LTR	DESCRIPTION	DATE	DWN	APVD
		SEE SHEET 1.			



- NOTES :
- QUANTITY :  
10 REEL/SHIPPING BOX  
2000 PCS/REEL
  - DIMENSION :  
BOX : 345X345X240  
REEL : Ø330X20.0
  - GENERAL TOLERANCE : ±0.3
  - WEIGHT :  
NET WEIGHT : 6.00kg  
GROSS WEIGHT : 6.52kg



REEL DIMENSION: REFERENCE ONLY



THIS DRAWING IS A CONTROLLED DOCUMENT.		DWN	TE Connectivity		
DIMENSIONS: mm		CHK	NAME		
TOLERANCES UNLESS OTHERWISE SPECIFIED:		APVD	SHIELD FINGER 4025-T		
0 PLC ± -		PRODUCT SPEC	SIZE	CAGE CODE	DRAWING NO
1 PLC ± 0.3		APPLICATION SPEC	A3	00779	C-440422
2 PLC ± 0.2		WEIGHT	RESTRICTED TO		
3 PLC ± 0.15		CUSTOMER DRAWING	SCALE		
4 PLC ± -			SHEET 2 of 2		
ANGLES ± 3'			REV B2		
MATERIAL	FINISH				

单击下面可查看定价，库存，交付和生命周期等信息

[>>TE Connectivity\(泰科\)](#)