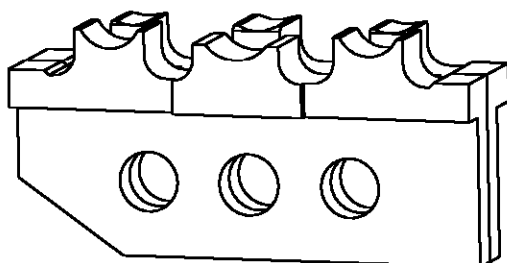
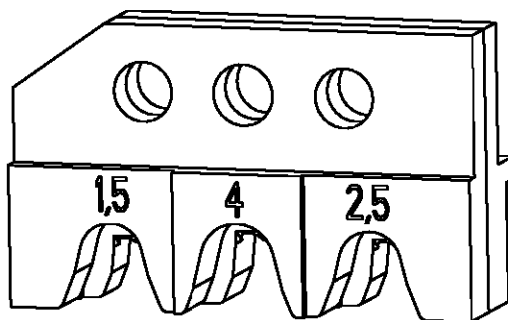


LOC	DIST	REVISIONS					
A1	-	P	LTR	DESCRIPTION	DATE	DWN	APVD
			A		new drawing	11FEB2002	-

Kontakt Contact	DGB (mm ²) Wire Range	Drahtcrimp/Wirecrimp Hoehe/Height		Isocrimp Breite/Width	Iso.-∅ Ins. Range	Dichtung Seal	Betriebsanl. Instr. Sheet
	967717 / 967723 / 968876	1.5	1.58	2.54	4.19	2.2-2.4	828905
	2.5	1.88	2.7-3.0				
968877	4.0	2.27	3.05	5.08	3.4-3.7	828985	



539727-2	1	0-539787-7	locator ass.	Positioniereinheit	A
	1	1-539786-9	contact guide	Kontaktabstuetzung	A
	1	1-519151-3	screw M4x25	Schraube M4x25	A
	1	1-519151-2	screw M4x20	Schraube M4x20	A
	1	0-519024-2	hex nut M4	Mutter M4 DIN 985	A
	1	0-519021-8	hex nut M4	Mutter M4 DIN 934	A
	QTY Stck	PN	Description	Benennung	REV

19

RELEASED FOR PUBLICATION

THIS DRAWING IS UNPUBLISHED.

BY TYCO ELECTRONICS CORPORATION. ALL RIGHTS RESERVED.

© COPYRIGHT 19

DIMENSIONS: mm-DIN 7168-m		DWN M.Weberndoerfer 18NOV99	MATERIAL -	FINISH -
TOLERANCES UNLESS OTHERWISE SPECIFIED:		CHK U.Reuter 18NOV99	AMP tyco Electronics AMP GmbH D - 64625 Bensheim	
0 PLC ± 1 PLC ± 2 PLC ± 3 PLC ± 4 PLC ± ANGLES ±		APVD -		
PRODUCT SPEC -		NAME ERGOCRIMP Die Set for MCP 2.8 mm (SWS) and 2.8 mm Sensor-Flattype Rec. (SWS)	RESTRICTED TO -	
APPLICATION SPEC -		SIZE A4	CAGE CODE 00779	DRAWING NO C=539727-2
WEIGHT -		SCALE 2:1 SHEET 1 OF 1 REV A		
CUSTOMER DRAWING				

单击下面可查看定价，库存，交付和生命周期等信息

[>>TE Connectivity\(泰科\)](#)