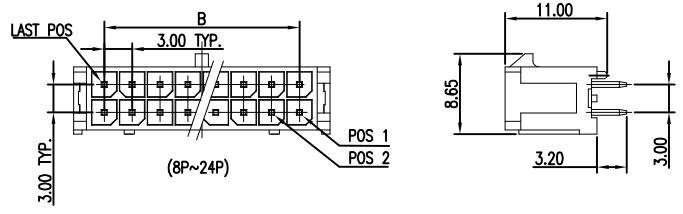
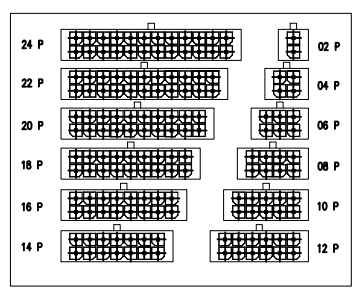
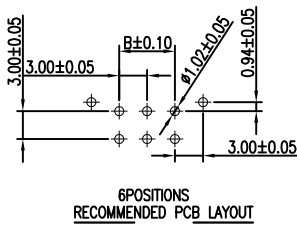
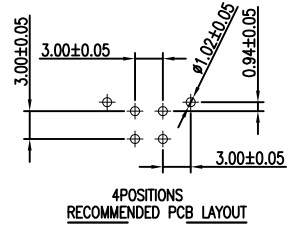
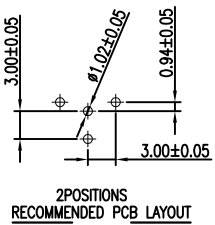
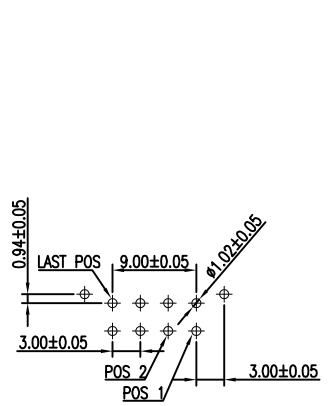
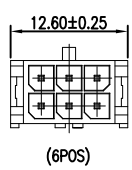
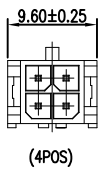
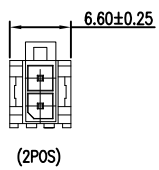


NOTE:  
 1.MATERIAL:  
 HOUSING:THERMOPLASTIC HIGH TEMPERATURE. COLOR-BLACK  
 CONTACT: COPPER ALLOY.  
 2.CONTACT FINISH:  
 CONTACT:80u" MIN TIN ,PLATED OVER 50U" MIN NICKEL PLATED  
 3.DIMENSIONAL :

P/N	POS	A	B
1-2834216-1	2	6.60	---
1-2834216-2	4	9.60	3.00
1-2834216-3	6	12.60	6.00
1-2834216-4	8	15.60	9.00
1-2834216-5	10	18.60	12.00
1-2834216-6	12	21.60	15.00
1-2834216-7	14	24.60	18.00
1-2834216-8	16	27.60	21.00
1-2834216-9	18	30.60	24.00
2-2834216-1	20	33.60	27.00
2-2834216-2	22	36.60	30.00
2-2834216-3	24	39.60	33.00



THIS DRAWING IS A CONTROLLED DOCUMENT. DWG NO: GEORGE FU 070dec2016  
 SHI MING 070dec2016  
 SHI MING 070dec2016  
 NAME: 3.0MM PITCH WAFER (VERTICAL) DIP TYPE  
 PROJECT SPEC: 108-137257  
 APPLICATION SPEC: 114-137257  
 VERNO: -  
 SIZE: CAGE CODE DRAWING NO: A200779  
 C-2834216  
 RESTRICTED TO: -  
 SCALE: 1:1 SHEET 1 OF 2 REV A



THIS DRAWING IS A CONTROLLED DOCUMENT. DWG NO: GEORGE FU 070dec2016  
 SHI MING 070dec2016  
 SHI MING 070dec2016  
 NAME: 3.0MM PITCH WAFER (VERTICAL) DIP TYPE  
 PROJECT SPEC: 108-137257  
 APPLICATION SPEC: 114-137257  
 VERNO: -  
 SIZE: CAGE CODE DRAWING NO: A200779  
 C-2834216  
 RESTRICTED TO: -  
 SCALE: 1:1 SHEET 2 OF 2 REV A

单击下面可查看定价，库存，交付和生命周期等信息

[>>TE Connectivity\(泰科\)](#)