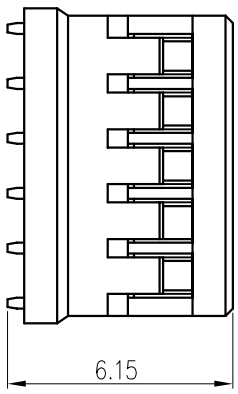
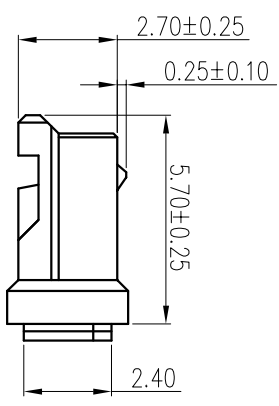
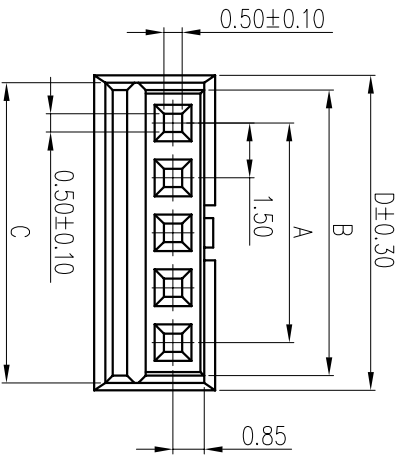
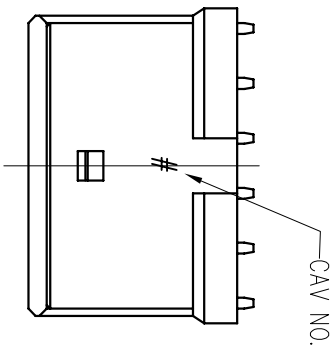


| REV. NO. | DATE | BY | APP'D |
|----------|------|----|-------|
| 1 | | | |

| REV. NO. | DATE | BY | APP'D |
|----------|------|----|-------|
| 1 | | | |



- NOTE:
1. MATERIAL: NYLON 66 UL94 V-0
 2. ROHS & HF COMPLIANCE
 3. FOR COLOR, AVAILABILITY, DELIVERY & MOQ, CONTACT TE
 4. ASSEMBLE TERMINAL: 2834302

| P/N | POS. | A | B | C | D |
|-------------|------|------|------|------|------|
| 1-2834301-1 | 2 | 1.5 | 3.3 | 3.7 | 4.1 |
| 1-2834301-2 | 3 | 3.0 | 4.8 | 5.2 | 5.6 |
| 1-2834301-3 | 4 | 4.5 | 6.3 | 6.7 | 7.1 |
| 1-2834301-4 | 5 | 6.0 | 7.8 | 8.2 | 8.6 |
| 1-2834301-5 | 6 | 7.5 | 9.3 | 9.7 | 10.1 |
| 1-2834301-6 | 7 | 9.0 | 10.8 | 11.2 | 11.6 |
| 1-2834301-7 | 8 | 10.5 | 12.3 | 12.7 | 13.1 |
| 1-2834301-8 | 9 | 12.0 | 13.8 | 14.2 | 14.6 |
| 1-2834301-9 | 10 | 13.5 | 15.3 | 15.7 | 16.1 |
| 2-2834301-1 | 11 | 15.0 | 16.8 | 17.2 | 17.6 |
| 2-2834301-2 | 12 | 16.5 | 18.3 | 18.7 | 19.1 |
| 2-2834301-3 | 13 | 18.0 | 19.8 | 20.2 | 20.6 |
| 2-2834301-4 | 14 | 19.5 | 21.3 | 21.7 | 22.1 |
| 2-2834301-5 | 15 | 21.0 | 22.8 | 23.2 | 23.6 |

THIS DRAWING IS A CONTROLLED DOCUMENT.

DATE: 18MAR2017
 BY: MINGS 18MAR2017
 CHECKED: MINGS 18MAR2017

TE Connectivity

WTB 1.50mm PLUG HOUSING

SIZE: A4
 CODE: 00779
 SCALE: 1:1

REVISIONS

| REV. NO. | DATE | BY | APP'D |
|----------|------|----|-------|
| 1 | | | |

单击下面可查看定价，库存，交付和生命周期等信息

[>>TE Connectivity\(泰科\)](#)